



Chipsmall Limited consists of a professional team with an average of over 10 year of expertise in the distribution of electronic components. Based in Hongkong, we have already established firm and mutual-benefit business relationships with customers from,Europe,America and south Asia,supplying obsolete and hard-to-find components to meet their specific needs.

With the principle of “Quality Parts,Customers Priority,Honest Operation,and Considerate Service”,our business mainly focus on the distribution of electronic components. Line cards we deal with include Microchip,ALPS,ROHM,Xilinx,Pulse,ON,Everlight and Freescale. Main products comprise IC,Modules,Potentiometer,IC Socket,Relay,Connector.Our parts cover such applications as commercial,industrial, and automotives areas.

We are looking forward to setting up business relationship with you and hope to provide you with the best service and solution. Let us make a better world for our industry!



Contact us

Tel: +86-755-8981 8866 Fax: +86-755-8427 6832

Email & Skype: info@chipsmall.com Web: www.chipsmall.com

Address: A1208, Overseas Decoration Building, #122 Zhenhua RD., Futian, Shenzhen, China



4

3

2

1

THIS DRAWING IS UNPUBLISHED.

RELEASED FOR PUBLICATION

20

© COPYRIGHT 20

BY TYCO ELECTRONICS CORPORATION. ALL RIGHTS RESERVED.

LOC

DIST

REVISIONS

P

LTR

DESCRIPTION

DATE

DWN

APVD

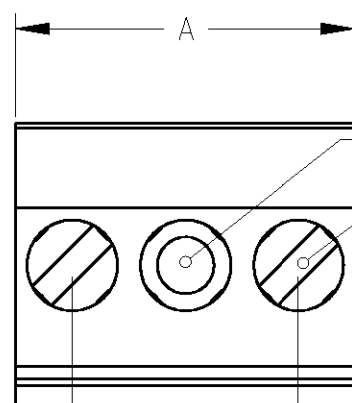
B

REVISED PER 0G3B-0119-01

03JAN2002

EZ

DB



CLOGGED CAVITY

CLAMPING SCREW



MATERIALS AND FINISH
HOUSING: PA 6-6, UL 94-V0, COLOR GREEN.
CLAMP: BRASS, NICKEL PLATED.
DOUBLE SIDE CONTACT SPRING : PHOSPHOR BRONZE, TIN PLATED.
CLAMPING SCREW: M3, BRASS, NICKEL PLATED.

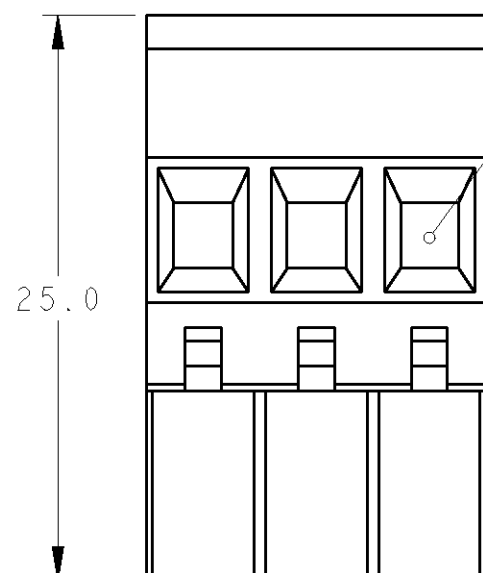
2

WIRE SIZE RANGE:
12 - 30 AWG

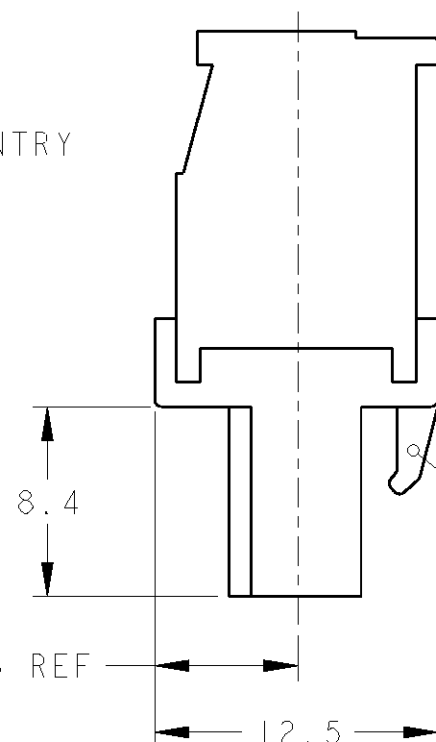


NOT CUMULATIVE TOLERANCE.

2.5 REF
10.0±0.1
3



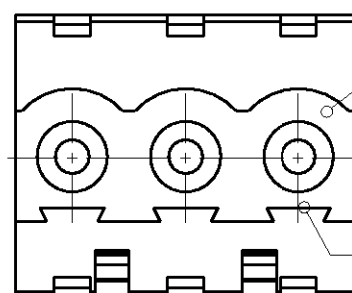
WIRE ENTRY



RETENTION LATCH

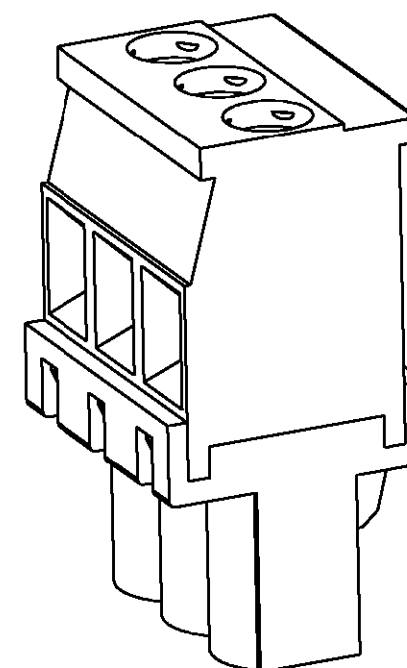
6.25 REF

12.5



MATING FACE

POLARIZATION KEY SLOT



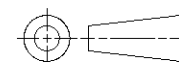
284044-2 AS SHOWN

125	13	1-284044-3
115	12	1-284044-2
105	11	1-284044-1
95	10	1-284044-0
85	9	284044-9
75	8	284044-8
65	7	284044-7
55	6	284044-6
45	5	284044-5
35	4	284044-4
25	3	284044-3
15	2	284044-2
DIM. A	N° OF POS.	PART NUMBER

THIS DRAWING IS A CONTROLLED DOCUMENT FOR TYCO ELECTRONICS CORPORATION
IT IS SUBJECT TO CHANGE AND THE CONTROLLING ENGINEERING ORGANIZATION
SHOULD BE CONTACTED FOR THE LATEST REVISION.

DIMENSIONS:

mm

TOLERANCES UNLESS
OTHERWISE SPECIFIED:

0 PLC ±-
1 PLC ±.3
2 PLC ±.25
3 PLC ±-
4 PLC ±-
ANGLES ±2

MATERIAL



FINISH



DWN 03JAN2002

CHK E. ZANOLINI

E. ZANOLINI 03JAN2002

APVD D. BIEVENOUR

PRODUCT SPEC

-

APPLICATION SPEC

-

WEIGHT

-

CUSTOMER DRAWING

BUCHANAN

Tyco Electronics
Harrisburg, PA 17105-3608

NAME
TERMINAL BLOCK VERTICAL PLUG
STACKING LEFT HAND
10.0mm PITCH

SIZE CAGE CODE DRAWING NO RESTRICTED TO

A3 00779 C-284044

SCALE 3:1 SHEET 1 OF 1 REV B