



Chipsmall Limited consists of a professional team with an average of over 10 year of expertise in the distribution of electronic components. Based in Hongkong, we have already established firm and mutual-benefit business relationships with customers from,Europe,America and south Asia,supplying obsolete and hard-to-find components to meet their specific needs.

With the principle of “Quality Parts,Customers Priority,Honest Operation,and Considerate Service”,our business mainly focus on the distribution of electronic components. Line cards we deal with include Microchip,ALPS,ROHM,Xilinx,Pulse,ON,Everlight and Freescale. Main products comprise IC,Modules,Potentiometer,IC Socket,Relay,Connector.Our parts cover such applications as commercial,industrial, and automotives areas.

We are looking forward to setting up business relationship with you and hope to provide you with the best service and solution. Let us make a better world for our industry!



Contact us

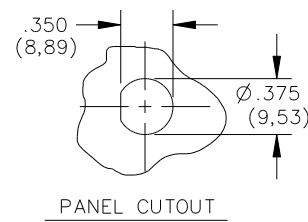
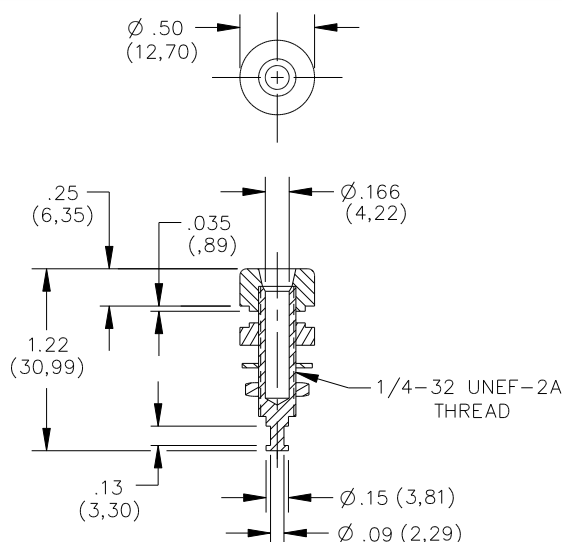
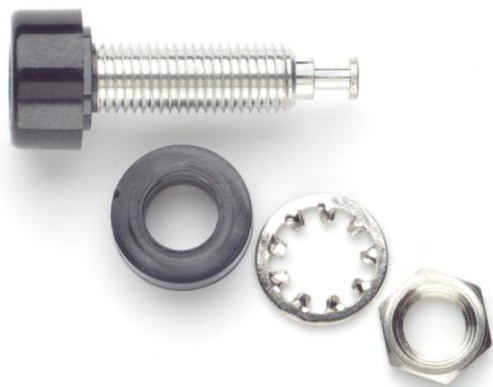
Tel: +86-755-8981 8866 Fax: +86-755-8427 6832

Email & Skype: info@chipsmall.com Web: www.chipsmall.com

Address: A1208, Overseas Decoration Building, #122 Zhenhua RD., Futian, Shenzhen, China



**Model 1581, 2854 & 4900
Panel Mount Banana Jack**



Features

- Banana Jacks mount into panels ranging in thickness from .063" (1.6mm) to .375" (9.5mm).
- Model 4900 features Polyphenylene Sulfide for high temperature applications.
- Model 2854 features gold plated body for optimum electrical connection.
- Model 1581 features bright tin plating.

Materials

Banana Jack: Body – Brass, Nickel Plated, (Model 2854, Brass, Gold Plated)
 Insulators: Polycarbonate (Model 4900, High Temperature Polyphenylene Sulfide)
 1/4 Internal Locking Washer: Steel, Nickel Plated
 1/4-32 Hex Nut: Brass, Nickel Plated

Ratings

Operating Temperature: +115°C (+239°F), (Model 4900 +220°C (+428°F))
 Operating Voltage: For *CE compliance* and for personal safety, do not hold in hand when voltages exceed 30 Vrms/60 Vdc.
 Maximum voltage for *hands free use* in controlled testing environments: 2500 WVDC
 Do not use on circuits where transient stresses can exceed the rated voltage.
 Current: 15 Amperes

Ordering Information Model: #-Color Code

1581 Std. Colors: -0 Black, -1 Brown, -2 Red, -3 Orange, -4 Yellow, -5 Green, -6 Blue, -7 Violet, -8 Gray, -9 White
 2854 Std. Colors: -0 Black, -1 Brown, -2 Red, -4 Yellow, -5 Green, -6 Blue, -8 Gray, -9 White (*Other colors available, contact Pomona Technical Support: technicalsupport@pomonatest.com*)
 4900 Std. Colors: -0 Black, -6 Blue
 Sold unassembled, in packages of 10 per color
 Ordering Example: 2854-2 Gold Plated Banana Jack, Color: Red

USA: Sales: 800-490-2361
 Technical Support: technicalsupport@pomonatest.com
 Fax: 425-446-5844
Europe: 31-(0) 40 2675 150 **International:** 425-446-5500
Where to Buy: www.pomonaelectronics.com

All dimensions are in inches. Tolerances (except noted): .xx = ±.02" (.51 mm), .xxx = ±.005" (.127 mm). All specifications are to the latest revisions. Specifications are subject to change without notice. Registered trademarks are the property of their respective companies.