



Chipsmall Limited consists of a professional team with an average of over 10 year of expertise in the distribution of electronic components. Based in Hongkong, we have already established firm and mutual-benefit business relationships with customers from,Europe,America and south Asia,supplying obsolete and hard-to-find components to meet their specific needs.

With the principle of “Quality Parts,Customers Priority,Honest Operation,and Considerate Service”,our business mainly focus on the distribution of electronic components. Line cards we deal with include Microchip,ALPS,ROHM,Xilinx,Pulse,ON,Everlight and Freescale. Main products comprise IC,Modules,Potentiometer,IC Socket,Relay,Connector.Our parts cover such applications as commercial,industrial, and automotives areas.

We are looking forward to setting up business relationship with you and hope to provide you with the best service and solution. Let us make a better world for our industry!



## Contact us

Tel: +86-755-8981 8866 Fax: +86-755-8427 6832

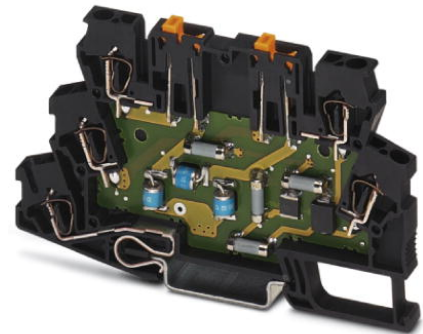
Email & Skype: info@chipsmall.com Web: www.chipsmall.com

Address: A1208, Overseas Decoration Building, #122 Zhenhua RD., Futian, Shenzhen, China




# TT-ST-M-2-PE-24DC

Order No.: 2858904



<http://eshop.phoenixcontact.de/phoenix/treeViewClick.do?UID=2858904>

TERMITRAB, spring-cage modular terminal block with integrated surge protection and disconnect knives, for assembly on NS 35/7.5, voltage  $U_N$  24 V DC, terminal width: 6.2 mm, cover width: 2.2 mm

Commercial data	
GTIN (EAN)	 4 017918 938024
sales group	J301
Pack	10 pcs.
Customs tariff	85363030
Catalog page information	Page 102 (TT-2009)

**Product notes**

WEEE/RoHS-compliant since:  
06/28/2006



<http://www.download.phoenixcontact.com>  
Please note that the data given here has been taken from the online catalog. For comprehensive information and data, please refer to the user documentation. The General Terms and Conditions of Use apply to Internet downloads.

Technical data	
<b>General</b>	
Housing material	PA 6.6
Inflammability class acc. to UL 94	V2
Color	black

Standards for air and creepage distances	VDE 0110-1
	IEC 60664-1: 1992-10
Surge voltage category	III
Pollution degree	2
Total surge current (8/20) $\mu$ s	10 kA
Total surge current (10/350) $\mu$ s	2 kA
Ambient temperature (operation)	-40 °C ... 85 °C
Mounting type	DIN rail: 35 mm
Design	Double-level terminal block with disconnect knife
Number of positions	2
Degree of protection	IP20
Direction of action	Line-Line & Line-Earth Ground
Width	6.20 mm
Height	63.50 mm
Length	100.00 mm

**Protective circuit**

IEC category	C1
	C2
	C3
	D1
VDE requirement class	C1
	C2
	C3
	D1
Nominal voltage $U_N$	24 V DC
Maximum continuous operating voltage $U_C$	30 V DC
	21 V AC
Maximum continuous voltage $U_C$ (wire-wire)	30 V DC
	21 V AC
Nominal current $I_N$	350 mA (45°C)
Operating effective current $I_C$ at $U_C$	$\leq 10 \mu$ A
Ground conductor current $I_{PE}$	$\leq 2 \mu$ A
Nominal discharge surge current $I_n$ (8/20) $\mu$ s (Core-Core)	5 kA
Nominal discharge surge current $I_n$ (8/20) $\mu$ s (Core-Earth)	5 kA

Total surge current (8/20) $\mu$ s	10 kA
Max. discharge surge current $I_{max}$ (8/20) $\mu$ s maximum (Core-Core)	5 kA
Max. discharge surge current $I_{max}$ (8/20) $\mu$ s maximum (Core-Earth)	5 kA
Nominal pulse current $I_{an}$ (10/1000) $\mu$ s (Core-Core)	100 A
Nominal pulse current $I_{an}$ (10/1000) $\mu$ s (Core-Earth)	200 A (in total)
Lightning test current (10/350) $\mu$ s, peak value $I_{imp}$	1 kA (per path)
Output voltage limitation at 1 kV/ $\mu$ s (Core-Core) spike	$\leq 40$ V
Output voltage limitation at 1 kV/ $\mu$ s (Core-Earth) spike	$\leq 600$ V
Output voltage limitation at 1 kV/ $\mu$ s (Core-Core) static	$\leq 40$ V
Output voltage limitation at 1 kV/ $\mu$ s (Core-Earth) static	$\leq 600$ V
Residual voltage at $I_n$ , (conductor-conductor)	$\leq 40$ V
Protection level $U_p$ (Core-Core)	$\leq 60$ V (C2 (10 kV/5 kA))
	$\leq 40$ V (stat.)
Protection level $U_p$ (Core-Earth)	$\leq 600$ V (C2 (10 kV/5 kA))
Response time $t_A$ (Core-Core)	$\leq 1$ ns
Response time $t_A$ (Core-Earth)	$\leq 100$ ns
Input attenuation aE, sym.	1 dB (< 400 kHz)
Cut-off frequency $f_g$ (3 dB), sym. in 50 Ohm system	3 MHz
Cut-off frequency $f_g$ (3 dB), sym. in 150 Ohm system	1 MHz
Capacity (Core-Core)	4 nF
Capacity (Core-Earth)	2 pF
Resistance in series	6.6 $\Omega$ $\pm 20$ % (per path)
	6.6 $\Omega$
Max. required back-up fuse	370 mA
Surge carrying capacity in acc. with IEC 61643-21 (Core-Core)	C2 (10 kV/5 kA)
Surge carrying capacity in acc. with IEC 61643-21 (Core-Earth)	C2 (10 kV/5 kA)
	D1 (1 kA)

**Connection data**

Type of connection	Spring-cage connection
Connection type IN	Spring-cage
Connection type OUT	Spring-cage
Conductor cross section stranded min.	0.5 mm <sup>2</sup>
Conductor cross section stranded max.	2.5 mm <sup>2</sup>
Conductor cross section solid min.	0.5 mm <sup>2</sup>
Conductor cross section solid max.	4 mm <sup>2</sup>
Conductor cross section AWG/kcmil min.	24
Conductor cross section AWG/kcmil max	12

**Connection, protective circuit**

Standards/regulations	IEC 61643-21
-----------------------	--------------

**Certificates / Approvals**



Certification GOST

**Accessories**

Item	Designation	Description
<b>General</b>		
2858894	TT-D-STTCO-BK	End cover for TERMITRAB TT-ST-..., width: 2.2 mm, color: Black
<b>Marking</b>		
1051993	B-STIFT	Marker pen, for manual labeling of unprinted Zack strips, smear-proof and waterproof, line thickness 0.5 mm
0808749	ZBF 6,LGS:FORTL.ZAHLEN	Zack marker strip, flat, printed horizontally: 10-section, with the numbers 1 - 10, 11 - 20, and so on up to 91 - 100, color: white
0808736	ZBF 6/WH-100:UNBEDRUCKT	Zack strip, flat, unprinted: 10-section, for individual labeling with M-PEN or ZBF-T, large batch, sufficient for labeling 1000 terminal blocks, color: white
0808710	ZBF 6:UNBEDRUCKT	Zack strip, flat, unprinted: 10-section, for individual labeling with M-PEN or ZBF-T, sufficient for 100 terminal blocks, color: white

### Additional products

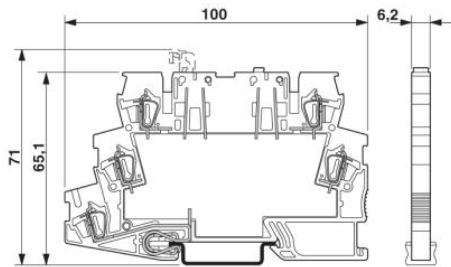
Item	Designation	Description
------	-------------	-------------

#### General

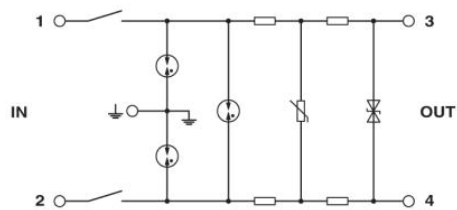
2858894	TT-D-STTCO-BK	End cover for TERMITRAB TT-ST-..., width: 2.2 mm, color: Black
---------	---------------	--

### Diagrams/Drawings

Dimensioned drawing



Circuit diagram



**Address**

PHOENIX CONTACT Deutschland GmbH  
Flachmarktstr. 8  
32825 Blomberg, Germany  
Phone +49 5235 3 12000  
Fax +49 5235 3 41200  
<http://www.phoenixcontact.de>



© 2011 Phoenix Contact  
Technical modifications reserved;