



Chipsmall Limited consists of a professional team with an average of over 10 year of expertise in the distribution of electronic components. Based in Hongkong, we have already established firm and mutual-benefit business relationships with customers from,Europe,America and south Asia,supplying obsolete and hard-to-find components to meet their specific needs.

With the principle of “Quality Parts,Customers Priority,Honest Operation,and Considerate Service”,our business mainly focus on the distribution of electronic components. Line cards we deal with include Microchip,ALPS,ROHM,Xilinx,Pulse,ON,Everlight and Freescale. Main products comprise IC,Modules,Potentiometer,IC Socket,Relay,Connector.Our parts cover such applications as commercial,industrial, and automotives areas.

We are looking forward to setting up business relationship with you and hope to provide you with the best service and solution. Let us make a better world for our industry!



Contact us

Tel: +86-755-8981 8866 Fax: +86-755-8427 6832

Email & Skype: info@chipsmall.com Web: www.chipsmall.com

Address: A1208, Overseas Decoration Building, #122 Zhenhua RD., Futian, Shenzhen, China



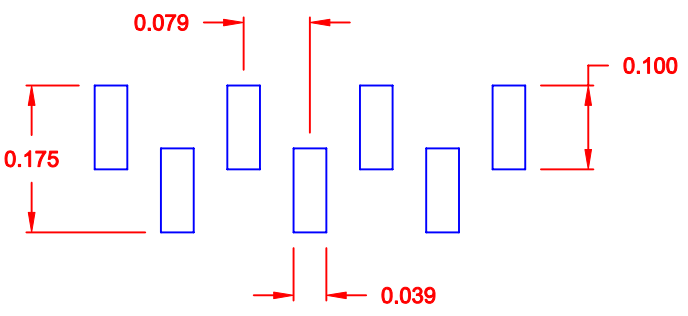
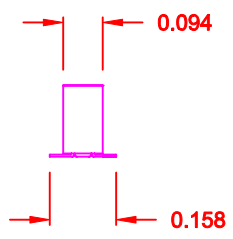
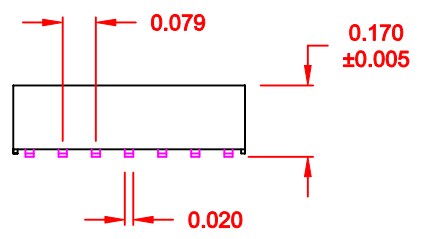
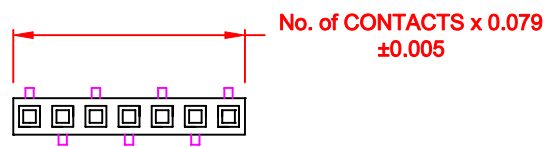
DESCRIPTION: 2MM RECEPTACLES

MATERIAL:

HOUSING: NYLON 6T, UL 94V-0, BLACK
 CONTACT: PHOSPHOR BRONZE
 PLATING: GOLD FLASH ENTIRE CONTACT

ELECTRICAL:

CURRENT RATING: 1 AMPS
 CONTACT RESISTANCE: 20mOHMS Max.
 INSULATOR RESISTANCE: 5,000MOHMS Min.
 DIELECTRIC WITHSTANDING: 500VAC
 OPERATING TEMPERATURE: -40° TO +105° C
 PROCESS TEMPERATURE: 260° C FOR 10 SECONDS



PCB LAYOUT

SCALE = 4 : 1

2863 YY 06 R P2

SERIES _____
 2863 = SINGLE ROW
 POSITIONS _____
 SINGLE - INCREMENTS OF 1
 (3 TO 40)
 TYPE _____
 06 = SURFACE MOUNT
 RoHS COMPLIANT _____
 HIGH TEMP.
 PLATING _____
 P2 = GOLD FLASH

DO NOT SCALE FROM DRAWING

	THESE DRAWINGS AND SPECIFICATIONS ARE THE PROPERTY OF NorComp AND SHALL NOT BE REPRODUCED, COPIED OR USED AS THE BASIS FOR THE MANUFACTURE OR SALE OF APPARATUS WITHOUT WRITTEN PERMISSION.		DRAWN: PAM JENKINS	DATE: 1-29-06
			CHECKED:	DATE:
<h1>NorComp</h1>		SCALE: 2 : 1	SHEET 1 OF 1	REV 4
		DWG NO. 2863YY06RP2		

RoHS COMPLIANT