



Chipsmall Limited consists of a professional team with an average of over 10 year of expertise in the distribution of electronic components. Based in Hongkong, we have already established firm and mutual-benefit business relationships with customers from,Europe,America and south Asia,supplying obsolete and hard-to-find components to meet their specific needs.

With the principle of “Quality Parts,Customers Priority,Honest Operation,and Considerate Service”,our business mainly focus on the distribution of electronic components. Line cards we deal with include Microchip,ALPS,ROHM,Xilinx,Pulse,ON,Everlight and Freescale. Main products comprise IC,Modules,Potentiometer,IC Socket,Relay,Connector.Our parts cover such applications as commercial,industrial, and automotives areas.

We are looking forward to setting up business relationship with you and hope to provide you with the best service and solution. Let us make a better world for our industry!



Contact us

Tel: +86-755-8981 8866 Fax: +86-755-8427 6832

Email & Skype: info@chipsmall.com Web: www.chipsmall.com

Address: A1208, Overseas Decoration Building, #122 Zhenhua RD., Futian, Shenzhen, China



Head-mounted transducer - MCR-SL-HT-PT 100-I - 2864516

Please be informed that the data shown in this PDF Document is generated from our Online Catalog. Please find the complete data in the user's documentation. Our General Terms of Use for Downloads are valid (<http://phoenixcontact.com/download>)



MCR head-mounted temperature transducers for resistance thermometers, thermocouples, resistance-type sensors and voltage sensors. For Pt 100 resistance thermometers

Product Features

- Freely programmable via MCR/PI-CONF-WIN
- For installation in connecting head, form B
- Two-wire transmitter for Pt 100 resistance thermometers

Key Commercial Data

Packing unit	1 pc
Weight per Piece (excluding packing)	84.95 g
Custom tariff number	85437090
Country of origin	Germany

Technical data

Ambient conditions

Ambient temperature (operation)	-40 °C ... 85 °C
Degree of protection	IP00, IP54 (integrated in the connecting head)

Input data

Configurable/programmable	Yes, programmable
Sensor types (RTD) that can be used	Pt 100 ; minimum measurement range 10 K
Connection method	2, 3, 4-wire

Output data

Output name	Current output
Current output signal	4 mA ... 20 mA
	20 mA ... 4 mA
Output current with wire break	≤ 3.6 mA or ≥ 21 mA (adjustable)
Output current with short-circuit	≤ 3.6 mA or ≥ 21 mA (adjustable)
Output current range with overrange/underrange	≤ 20.5 mA / ≥ 3.8 mA (linear increase/decrease)

Head-mounted transducer - MCR-SL-HT-PT 100-I - 2864516

Technical data

Output data

Load/output load current output	Max ($V_{\text{supply}} - 10 \text{ V}$) / 0.023 A (current output)
---------------------------------	---

Power supply

Designation	Loop-powered
Supply voltage range	10 V DC ... 35 V DC
Max. current consumption	< 3.5 mA

Connection data

Connection method	Screw connection
Conductor cross section solid min.	0.2 mm ²
Conductor cross section solid max.	1.75 mm ²
Conductor cross section AWG min.	24
Conductor cross section AWG max.	15
Conductor cross section flexible min.	0.2 mm ²
Conductor cross section flexible max.	1.75 mm ²
Stripping length	8 mm
Screw thread	M3

General

Transmission error resistance thermometer	0.2 K
Step response (10-90%)	< 2 s
Switch-on delay	4 s
Noise emission	EN 61326-1 (IEC 61326) and NAMUR NE 21
Noise immunity	EN 61326-1 (IEC 61326) and NAMUR NE 21
Color	green
Housing material	Polycarbonate, PC
Mounting position	any
Assembly instructions	Connection head according to DIN 43729 form B
Configuration	Using MCR-PI-CONF-WIN configuration software package
Conformance	CE-compliant
UL, USA / Canada	Class I, Div. 2, Groups A, B, C, D

Standards and Regulations

Noise emission	EN 61326-1 (IEC 61326) and NAMUR NE 21
Noise immunity	EN 61326-1 (IEC 61326) and NAMUR NE 21
Connection in acc. with standard	CUL
Conformance	CE-compliant
UL, USA / Canada	Class I, Div. 2, Groups A, B, C, D

Head-mounted transducer - MCR-SL-HT-PT 100-I - 2864516

Classifications

eCl@ss

eCl@ss 4.0	27200206
eCl@ss 4.1	27200206
eCl@ss 5.0	27200206
eCl@ss 5.1	27200206
eCl@ss 6.0	27200206
eCl@ss 7.0	27200206
eCl@ss 8.0	27371503

ETIM

ETIM 2.0	EC001446
ETIM 3.0	EC001446
ETIM 4.0	EC001446
ETIM 5.0	EC002568

UNSPSC

UNSPSC 6.01	30211506
UNSPSC 7.0901	39121008
UNSPSC 11	39121008
UNSPSC 12.01	39121008
UNSPSC 13.2	39121008

Approvals

Approvals

Approvals

UL Recognized / cUL Recognized / EAC / EAC / cULus Recognized

Ex Approvals

UL Listed / cUL Listed / cULus Listed

Approvals submitted

Approval details

Head-mounted transducer - MCR-SL-HT-PT 100-I - 2864516

Approvals

UL Recognized

cUL Recognized

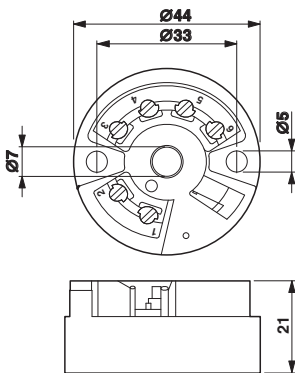
EAC

EAC

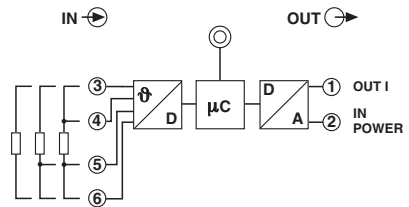
cULus Recognized

Drawings

Dimensional drawing



Circuit diagram



Head-mounted transducer - MCR-SL-HT-PT 100-I - 2864516

Connection diagram

