



Chipsmall Limited consists of a professional team with an average of over 10 year of expertise in the distribution of electronic components. Based in Hongkong, we have already established firm and mutual-benefit business relationships with customers from,Europe,America and south Asia,supplying obsolete and hard-to-find components to meet their specific needs.

With the principle of “Quality Parts,Customers Priority,Honest Operation,and Considerate Service”,our business mainly focus on the distribution of electronic components. Line cards we deal with include Microchip,ALPS,ROHM,Xilinx,Pulse,ON,Everlight and Freescale. Main products comprise IC,Modules,Potentiometer,IC Socket,Relay,Connector.Our parts cover such applications as commercial,industrial, and automotives areas.

We are looking forward to setting up business relationship with you and hope to provide you with the best service and solution. Let us make a better world for our industry!



Contact us

Tel: +86-755-8981 8866 Fax: +86-755-8427 6832

Email & Skype: info@chipsmall.com Web: www.chipsmall.com

Address: A1208, Overseas Decoration Building, #122 Zhenhua RD., Futian, Shenzhen, China



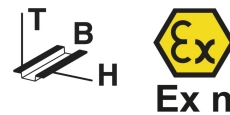
RAD-IN+OUT-2D-1A-I

Order No.: 2867322




<http://eshop.phoenixcontact.de/phoenix/treeViewClick.do?UID=2867322>

Analog /digital module for 2 digital inputs/outputs and 1 analog input/output



Commercial data

GTIN (EAN)	 4 017918 960636
sales group	H174
Pack	1 pcs.
Customs tariff	85177090
Catalog page information	Page 611 (IF-2009)

Product notes

WEEE/RoHS-compliant since:
04/22/2008



<http://www.download.phoenixcontact.com>
Please note that the data given here has been taken from the online catalog. For comprehensive information and data, please refer to the user documentation. The General Terms and Conditions of Use apply to Internet downloads.

Technical data

Analog input

Description of the input	Current input
Current input signal	4 mA ... 20 mA
Input resistance current input	< 170 Ω

Analog output

Output name	Current output
Load/output load current output	700 Ω (at $U_B = 24 \text{ V}$, $R_B = [U_B - 10 \text{ V}] / 20 \text{ mA}$)

Digital input

Input voltage range	5 V AC/DC ... 30 V AC/DC
Switching threshold "0" signal, voltage	max. 1.5 V DC
Switching threshold "1" signal voltage	min. 5 V DC

Digital output

Output name	Relay output
Number of outputs	2
Maximum switching voltage	30 V AC/DC (EC Declaration of Conformity)
	30 V DC (With UL approval)
	250 V AC (With UL approval)
Limiting continuous current	0.5 A (EC Declaration of Conformity)

General data

Width	22.5 mm
Height	99 mm
Depth	114.5 mm
Ambient temperature (operation)	-20 °C ... 65 °C
Ambient temperature (storage/transport)	-40 °C ... 85 °C
Degree of protection	IP20
Mounting position	Any
Assembly instructions	on TS 35 profile rail acc. to EN 60715
Housing material	Polyamide PA non-reinforced
Conformance	CE-compliant
ATEX	Ex II 3 G EEx nL IIC
IECEX	Ex nL IIC T5
UL, USA / Canada	Class I, Div. 2, Groups A, B, C, D

Connection data

Conductor cross section solid min.	0.2 mm ²
Conductor cross section solid max.	4 mm ²
Conductor cross section stranded min.	0.2 mm ²
Conductor cross section stranded max.	2.5 mm ²

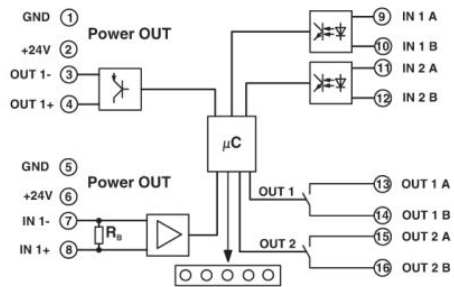
Conductor cross section AWG/kcmil min.	24
Conductor cross section AWG/kcmil max	14
Type of connection	Screw connection
Stripping length	8 mm
Screw thread	M3

Certificates / Approvals

Certification Ex: CUL-EX LIS, IECEEx, UL-EX LIS

Diagrams/Drawings

Block diagram



RAD-IN+OUT-2D-1A-I Order No.: 2867322

<http://eshop.phoenixcontact.de/phoenix/treeViewClick.do?UID=2867322>

Address

PHOENIX CONTACT Deutschland GmbH
Flachmarktstr. 8
32825 Blomberg, Germany
Phone +49 5235 3 12000
Fax +49 5235 3 41200
<http://www.phoenixcontact.de>



© 2011 Phoenix Contact
Technical modifications reserved;