



Chipsmall Limited consists of a professional team with an average of over 10 year of expertise in the distribution of electronic components. Based in Hongkong, we have already established firm and mutual-benefit business relationships with customers from,Europe,America and south Asia,supplying obsolete and hard-to-find components to meet their specific needs.

With the principle of "Quality Parts,Customers Priority,Honest Operation,and Considerate Service",our business mainly focus on the distribution of electronic components. Line cards we deal with include Microchip,ALPS,ROHM,Xilinx,Pulse,ON,Everlight and Freescale. Main products comprise IC,Modules,Potentiometer,IC Socket,Relay,Connector.Our parts cover such applications as commercial,industrial, and automotives areas.

We are looking forward to setting up business relationship with you and hope to provide you with the best service and solution. Let us make a better world for our industry!



Contact us

Tel: +86-755-8981 8866 Fax: +86-755-8427 6832

Email & Skype: info@chipsmall.com Web: www.chipsmall.com

Address: A1208, Overseas Decoration Building, #122 Zhenhua RD., Futian, Shenzhen, China



Mounting plate - FL PA 3K4K 8 - 2891108

Please be informed that the data shown in this PDF Document is generated from our Online Catalog. Please find the complete data in the user's documentation. Our General Terms of Use for Downloads are valid (<http://phoenixcontact.com/download>)



Mounting plate for FL SWITCH 30... and FL SWITCH 40... eight-port switches

Product Description

The FL PA 3K4K 8 and FL PA 3K4K 16 mounting plates provide a method for mounting FL SWITCH 3000 and FL SWITCH 4000 switches to a flat panel surface in any orientation. Exception: The FL SWITCH 3000E switches need to be mounted with the ventilation holes on top. The plate can be mounted on either side of the switch to allow the network ports to face the proper direction. The plate mounts to the panel with user-supplied M6 or 1/4-inch hardware.

Why buy this product

- Flexible panel mounting of FL SWITCH 3000 and 4000 series Ethernet managed switches
- FL PA 3K4K 8: Allows panel mounting of 5- and 8-port Ethernet switches
- Kit comes complete with screws need to mount the plate to the switch

Key Commercial Data

Packing unit	1 STK
Weight per Piece (excluding packing)	1.000 g
Custom tariff number	76169990
Country of origin	Taiwan

Technical data

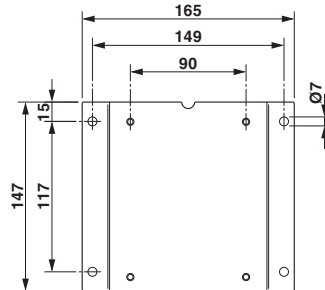
Dimensions

Height	147 mm
Width	165 mm

Drawings

Mounting plate - FL PA 3K4K 8 - 2891108

Dimensional drawing



Classifications

eCl@ss

eCl@ss 5.1	27250501
eCl@ss 6.0	27250501
eCl@ss 8.0	27049002
eCl@ss 9.0	27040701

ETIM

ETIM 5.0	EC002625
----------	----------