



Chipsmall Limited consists of a professional team with an average of over 10 year of expertise in the distribution of electronic components. Based in Hongkong, we have already established firm and mutual-benefit business relationships with customers from,Europe,America and south Asia,supplying obsolete and hard-to-find components to meet their specific needs.

With the principle of “Quality Parts,Customers Priority,Honest Operation,and Considerate Service”,our business mainly focus on the distribution of electronic components. Line cards we deal with include Microchip,ALPS,ROHM,Xilinx,Pulse,ON,Everlight and Freescale. Main products comprise IC,Modules,Potentiometer,IC Socket,Relay,Connector.Our parts cover such applications as commercial,industrial, and automotives areas.

We are looking forward to setting up business relationship with you and hope to provide you with the best service and solution. Let us make a better world for our industry!



Contact us

Tel: +86-755-8981 8866 Fax: +86-755-8427 6832

Email & Skype: info@chipsmall.com Web: www.chipsmall.com

Address: A1208, Overseas Decoration Building, #122 Zhenhua RD., Futian, Shenzhen, China



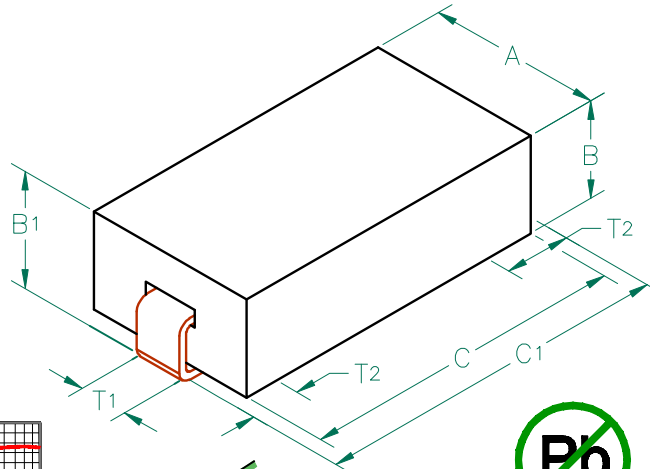
28F0181-1SR-10

PHYSICAL DIMENSIONS:

A	4.57 [.180]	± 0.08 [.003]
B	2.54 [.100]	± 0.08 [.003]
B ₁	3.05 [.120]	± MAX
C	8.51 [.335]	± 0.23 [.009]
C ₁	9.53 [.375]	± MAX

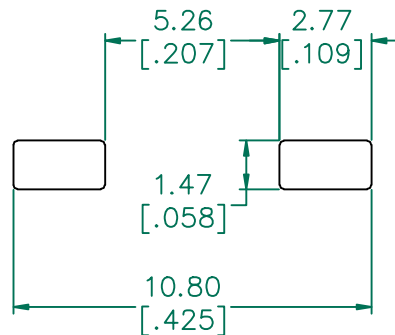
WIRE DIMENSIONS:

T ₁	1.27 [.050]	± REF.
T ₂	1.52 [.060]	± 0.51 [.020]



RoHS
2002/95/EC

LAND PATTERNS FOR REFLOW SOLDERING



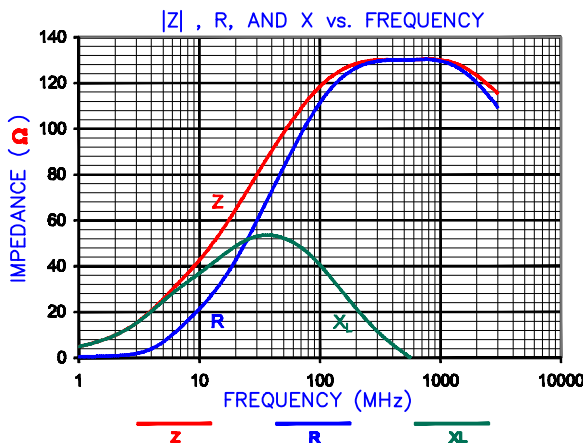
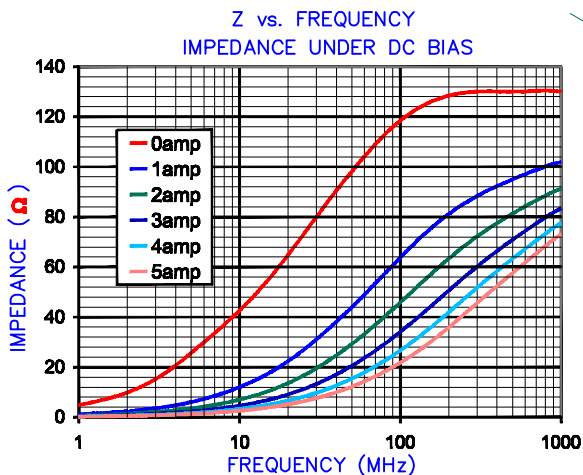
(For wave soldering, add 0.762 [.030] to this dimension.)

ELECTRICAL CHARACTERISTICS:

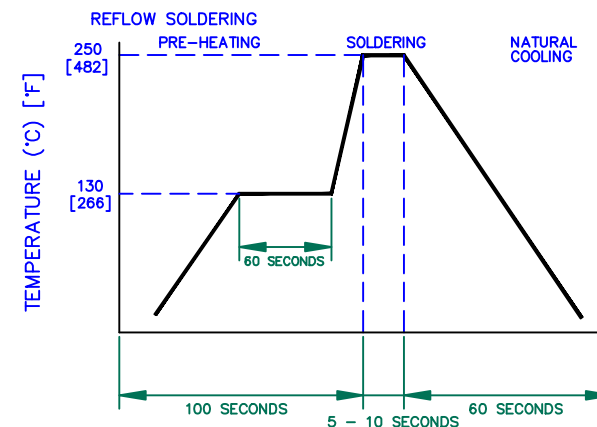
	Z (Ω) @		DCR (Ω)	Rated Current
	25MHz	100MHz		
Nominal	67	115		
Minimum	—	87		
Maximum	—	144	.001	10,000 mA

NOTES: UNLESS OTHERWISE SPECIFIED

1. TAPED AND REELED per CURRENT EIA SPECS. 13" REELS, 2,500 pcs/REEL.
2. COMPONENTS SHOULD BE ADEQUATELY PREHEATED BEFORE SOLDERING.
3. REF. CARRIER TAPE SPECIFICATION # CART181-13.
4. TERMINATION FINISH IS 100% TIN.

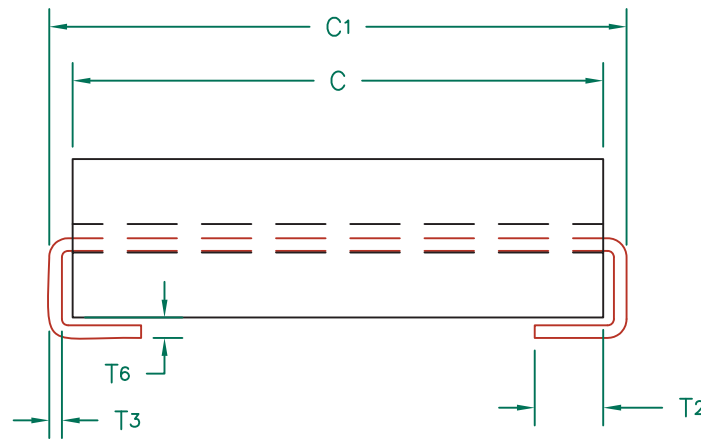
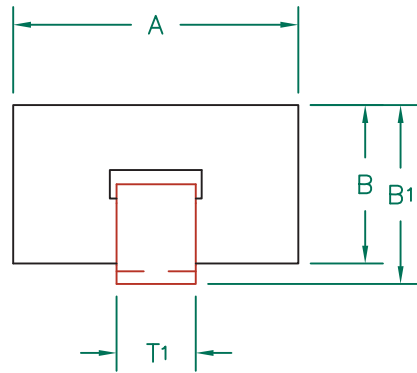


RECOMMENDED SOLDERING CONDITIONS



UNCONTROLLED DOCUMENT

DIMENSIONS ARE IN mm [INCHES].				This print is the property of Laird Tech. and is loaned in confidence subject to return upon request and with the understanding that no copies shall be made without the written consent of Laird Tech. All rights to design or invention are reserved.				
E	UPDATE LAND PATTERN ADD ROHS	02/26/09	JRK	PROJECT/PART NUMBER:		REV	PART TYPE:	DRANN BY:
D	UPDATE COMPANY LOGO	10/24/08	JRK	28F0181-1SR-10		E	ASSEMBLY	JRK
C	UPDATE COMPANY LOGO	04/19/07	JRK	DATE: 04/22/04		SCALE:	NTS	SHEET:
B	CORRECT CURRENT RATING	01/12/06	JRK	GAD #		TOOL #	H0181	2 of 3
A	ORIGINAL DRAFT	04/22/04	JRK	28F0181-1SR-10-2-E				
REV	DESCRIPTION	DATE	INT					

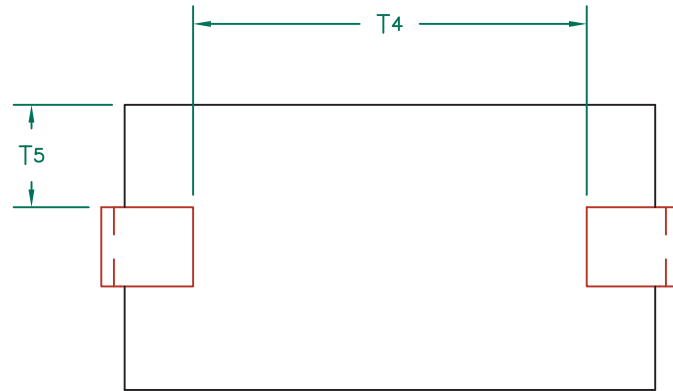
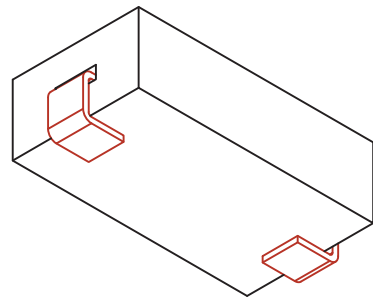


SCALE DRAWING 1:1

28F0181-1SR-10

ELECTRICAL TESTING

TEST:	Z	Z
# TURNS	1	1
AWG	-	-
FREQUENCY	25 MHz	100 MHz
NOMINAL	67 Ω	115 Ω
MINIMUM	- Ω	87 Ω
MAXIMUM	- Ω	144 Ω
WEIGHT/1000	.046 kgs.	1.02 lbs.



DIMENSIONS:

A	4.57 [.180]	+	0.08 [.003]
B	2.54 [.100]	+	0.08 [.003]
B ₁	3.05 [.120]	+	MAX
C	8.51 [.335]	+	0.23 [.009]
C ₁	9.53 [.375]	+	MAX



UNCONTROLLED DOCUMENT

NOTES: UNLESS OTHERWISE SPECIFIED

1. WIRE: FLAT, OXYGEN FREE COPPER 1.27 X 0.20 [.050 X .008] PLATED 100% TIN OVER NICKEL. TIN THICKNESS: 0.005 [.0002], NICKEL THICKNESS: 0.0002 [.00008].
2. IMPEDANCE VALUES ARE GROSS, MEASURED USING W0121 WIRE w/ NO D.C. BIAS.
3. REFERENCE STEWARD WIRE PURCHASE SPEC. W0121-*
4. *ON = PARYLENE COATED (.00025" TH).
5. REFERENCE STEWARD CORE P/N 28H0181-100.
6. T6 MEASURED ON COMPARATOR WITH TERMINALS UP.
7. TERMINATION FINISH IS 100% TIN.

WIRE DIMENSIONS:

T ₁	1.27 [.050]	+	REF.
T ₂	1.52 [.060]	+	0.51 [.020]
T ₃	0.20 [.008]	+	REF.
T ₄	5.97 [.235]	+	TYP.
T ₅	1.65 [.065]	+	0.25 [.010]
T ₆	0.43 [.017]	+	MAX

DIMENSIONS ARE IN mm [INCHES].			
F	CHANGE REFLOW TEMPERATURE	02/10/11	JUN
E	UPDATE LAND PATTERN ADD ROHS	02/26/09	JRK
D	UPDATE COMPANY LOGO	10/24/08	JRK
C	UPDATE COMPANY LOGO	04/19/07	JRK
B	CORRECT CURRENT RATING	01/12/06	JRK
A	ORIGINAL DRAFT	04/22/04	JRK
REV	DESCRIPTION	DATE	INT

This print is the property of Laird Tech. and is loaned in confidence subject to return upon request and with the understanding that no copies shall be made without the written consent of Laird Tech. All rights to design or invention are reserved.



PROJECT/PART NUMBER: 28F0181-1SR-10		REV F	PART TYPE: ASSEMBLY	DRAWN BY: JRK
DATE: 04/22/04	SCALE: 8:1	SHEET: 3 of 3		
CAD # 28H0181-1SR-10-3-F	TOOL # H0181			