



Chipsmall Limited consists of a professional team with an average of over 10 year of expertise in the distribution of electronic components. Based in Hongkong, we have already established firm and mutual-benefit business relationships with customers from,Europe,America and south Asia,supplying obsolete and hard-to-find components to meet their specific needs.

With the principle of “Quality Parts,Customers Priority,Honest Operation,and Considerate Service”,our business mainly focus on the distribution of electronic components. Line cards we deal with include Microchip,ALPS,ROHM,Xilinx,Pulse,ON,Everlight and Freescale. Main products comprise IC,Modules,Potentiometer,IC Socket,Relay,Connector.Our parts cover such applications as commercial,industrial, and automotives areas.

We are looking forward to setting up business relationship with you and hope to provide you with the best service and solution. Let us make a better world for our industry!



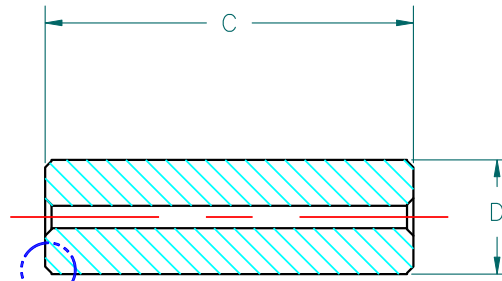
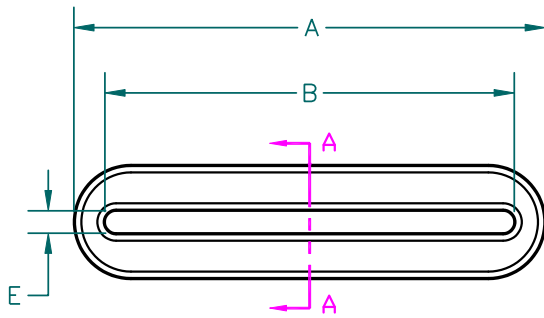
Contact us

Tel: +86-755-8981 8866 Fax: +86-755-8427 6832

Email & Skype: info@chipsmall.com Web: www.chipsmall.com

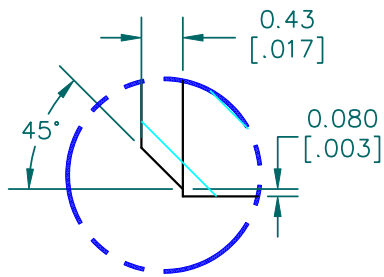
Address: A1208, Overseas Decoration Building, #122 Zhenhua RD., Futian, Shenzhen, China





DETAIL A

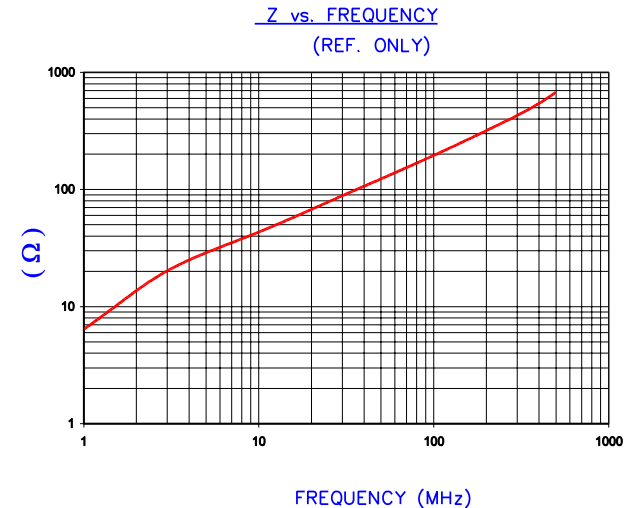
SECTION A-A



DETAIL A
SCALE 6:1

**UNCONTROLLED
DOCUMENT**

IMPEDANCE (Z)				
Frequency	25 MHz	100 MHz	300 MHz	
Nominal (REF)	78 Ω	192 Ω	418 Ω	
Minimum	- Ω	173 Ω	- Ω	

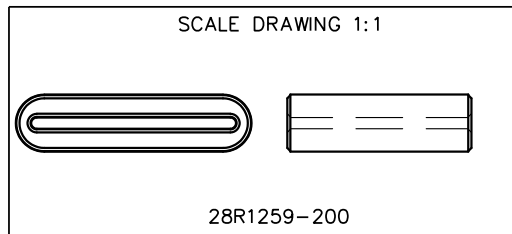


AGILENT E4991A Impedance/Material Analyzer
HP 16092A Test Fixture, REF # 2991

FERRITE CORE DIMENSIONS (SPEC):mm[Inches]

A	32.00 [1.260]	+	0.50 [.020]
B	27.80 [1.094]	+	0.50 [.020]
C	25.00 [.984]	+	1.00 [.039]
D	7.75 [.305]	+	0.50 [.020]
E	1.50 [.060]	+	0.50 [.020]

WEIGHT/1000 23.74 kgs [52.34 Lbs]



DIMENSIONS ARE IN mm[INCHES].				THIS DOCUMENT CONTAINS INFORMATION WHICH IS PROPRIETARY AND CONFIDENTIAL TO STEWARD. NO PRODUCTION OR PUBLICATION OF THIS DOCUMENT IN WHOLE OR IN PART SHALL BE MADE WITHOUT WRITTEN AUTHORIZATION FROM STEWARD.			
F	UPDATE MIN Z SPEC@100 Mhz, ADD REF #	02/03/04	JRK	<h1>Steward</h1>			
E	UPDATE FORMAT CURVE & Z SPECS	05/06/03	JRK				
D	UPDATE TO CNZ FORMAT ADD Z CURVE	07/29/02	JRK	PROJECT/PART NUMBER:	REV	PART TYPE:	DRAWN BY:
C	UPDATE PRINT, ADJUST IMPEDANCE VALUES COR. DETAIL "A", CORRECT PART WEIGHT	02/26/02	JRK	28R1259-200	F	FERRITE RIBBON CORE	DTR
B	CHG Z SPECS & FIRED WEIGHT	06/02/99	BAC	DATE:	SCALE:	SHEET:	
A	ORIGINAL DRAFT	03/17/98	DTR	03/17/98	3 : 1		
REV	DESCRIPTION	DATE	INT	CAD #	TOOL #		
				28R1259-200-F	R1259		STEWARD 28