



Chipsmall Limited consists of a professional team with an average of over 10 year of expertise in the distribution of electronic components. Based in Hongkong, we have already established firm and mutual-benefit business relationships with customers from,Europe,America and south Asia,supplying obsolete and hard-to-find components to meet their specific needs.

With the principle of “Quality Parts,Customers Priority,Honest Operation,and Considerate Service”,our business mainly focus on the distribution of electronic components. Line cards we deal with include Microchip,ALPS,ROHM,Xilinx,Pulse,ON,Everlight and Freescale. Main products comprise IC,Modules,Potentiometer,IC Socket,Relay,Connector.Our parts cover such applications as commercial,industrial, and automotives areas.

We are looking forward to setting up business relationship with you and hope to provide you with the best service and solution. Let us make a better world for our industry!



Contact us

Tel: +86-755-8981 8866 Fax: +86-755-8427 6832

Email & Skype: info@chipsmall.com Web: www.chipsmall.com

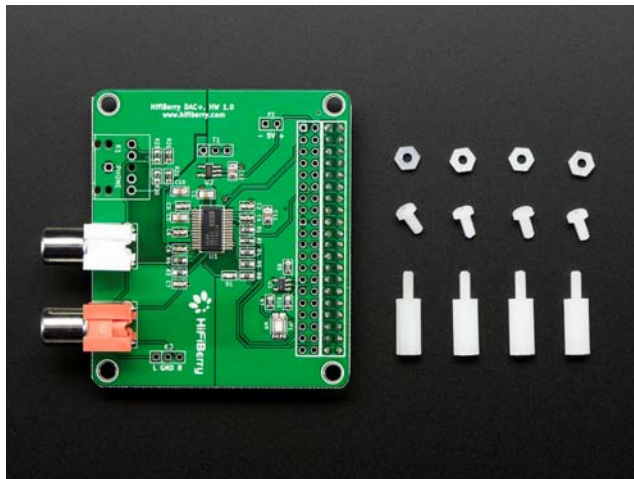
Address: A1208, Overseas Decoration Building, #122 Zhenhua RD., Futian, Shenzhen, China





HiFiBerry DAC+ HAT - Standard RCA

PRODUCT ID: 2901



. Description

The **HiFiBerry DAC+** is a high-resolution digital-to-analog converter for the Raspberry Pi 2 Model B and the A+ / B+ Models. This product also works with the Pi 3!

This is a special sound card for the Raspberry Pi, that is optimized for one specific use case: the best audio playback quality.

This is the **Standard RCA** version which uses RCA connectors that you know from your normal stereo equipment. The HiFiBerry, like all Pi HATs, sits right on top of your Pi's GPIO pins with no additional cables needed and integrated EEPROM for automatic configuration.

Features:

- Dedicated 192kHz/24bit high-quality Burr-Brown DAC for best sound quality
- Hardware volume control. You can control the output volume using “alsamixer” or any application that supports ALSA mixer controls
- Directly powered from the Raspberry Pi, no additional power supply
- Ultra-low-noise voltage regulator for optimal audio performance
- x4 M2.5x12mm spacers to fix the board onto the Raspberry Pi.

This board is ONLY compatible with the Raspberry Pi 2 Model B, Pi 3 Model B, and the Pi Models A+ and B+! While we haven't tested it with the Pi Zero, it likely works with it!

. Technical Details

- 56.4mm x 64.8mm / 2.2" x 2.55"
- Height (with sockets and RCA jacks): ~20mm / ~0.8"
- Weight: 18.8g