



Chipsmall Limited consists of a professional team with an average of over 10 year of expertise in the distribution of electronic components. Based in Hongkong, we have already established firm and mutual-benefit business relationships with customers from,Europe,America and south Asia,supplying obsolete and hard-to-find components to meet their specific needs.

With the principle of “Quality Parts,Customers Priority,Honest Operation,and Considerate Service”,our business mainly focus on the distribution of electronic components. Line cards we deal with include Microchip,ALPS,ROHM,Xilinx,Pulse,ON,Everlight and Freescale. Main products comprise IC,Modules,Potentiometer,IC Socket,Relay,Connector.Our parts cover such applications as commercial,industrial, and automotives areas.

We are looking forward to setting up business relationship with you and hope to provide you with the best service and solution. Let us make a better world for our industry!



## Contact us

Tel: +86-755-8981 8866 Fax: +86-755-8427 6832

Email & Skype: [info@chipsmall.com](mailto:info@chipsmall.com) Web: [www.chipsmall.com](http://www.chipsmall.com)

Address: A1208, Overseas Decoration Building, #122 Zhenhua RD., Futian, Shenzhen, China



## Relay Module - PLC-2RPT-24DC/1 - 2901639

Please be informed that the data shown in this PDF Document is generated from our Online Catalog. Please find the complete data in the user's documentation. Our General Terms of Use for Downloads are valid (<http://phoenixcontact.com/download>)



PLC-INTERFACE with two independent relays, consisting of PLC-BPT.../21 basic terminal block with push-in connection and two integrated relays, power contact, for mounting on DIN rail NS 35/7,5, 2 x 1 N/O contact, input voltage 24 V DC

The figure shows a version with a screw connection

### Product Features

- ✓ Two switching channels in one 6.2 mm housing
- ✓ 100% higher channel density than conventional 6.2 mm relays
- ✓ Integrated input circuit/protective circuit
- ✓ Safe isolation according to DIN EN 50178 between coil and contacts and between contacts
- ✓ Screw, spring-cage or Push-in connection



### Key commercial data

|                                      |           |
|--------------------------------------|-----------|
| Packing unit                         | 1 pc      |
| Weight per Piece (excluding packing) | 99.99 GRM |
| Custom tariff number                 | 85364190  |
| Country of origin                    | Germany   |

### Technical data

#### Note

|                         |   |
|-------------------------|---|
| Utilization restriction | EMC: class A product, see manufacturer's declaration in the download area |
|-------------------------|---|

#### Dimensions

|        |        |
|--------|--------|
| Width  | 6.2 mm |
| Height | 80 mm  |
| Depth  | 86 mm  |

#### Ambient conditions

# Relay Module - PLC-2RPT-24DC/1 - 2901639

## Technical data

### Ambient conditions

|   |                  |
|---|------------------|
| Ambient temperature (operation)         | -20 °C ... 60 °C |
| Ambient temperature (storage/transport) | -20 °C ... 60 °C |

### Coil side

|                                |  |
|--------------------------------|--|
| Nominal input voltage $U_N$    | 24 V DC  |
| Typical input current at $U_N$ | 7 mA   |
| Typical response time          | 4 ms   |
| Typical release time           | 6 ms   |
| Operating voltage display      | Yellow LED   |
| Protective circuit             | Protection against polarity reversal Polarity protection diode |
|                                | Free-wheeling diode Damping diode                              |

### Contact side

|                                       |  |
|---------------------------------------|--|
| Contact type                          | 2 N/O contacts (2 relays with 1 N/O contact) |
| Contact material                      | AgNi   |
| Maximum switching voltage             | 250 V AC/DC                                  |
| Minimum switching voltage             | 24 V AC/DC                                   |
| Min. switching current                | 5 mA   |
| Limiting continuous current           | 3.5 A  |
| Interrupting rating (ohmic load) max. | 84 W (at 24 V DC)                            |
|                                       | 24 W (at 48 V DC)                            |
|                                       | 24 W (at 60 V DC)                            |
|                                       | 31 W (at 110 V DC)                           |
|                                       | 46 W (at 220 V DC)                           |
|                                       | 875 VA (for 250 V AC)                        |

### General

|  |   |
|--|---|
| Test voltage relay winding/relay contact | 3 kV AC (50 Hz, 1 min.)   |
| Test voltage relay contact/relay contact | 3 kV AC (50 Hz, 1 min.)   |
| Operating mode                           | 100% operating factor   |
| Mechanical service life                  | $2 \times 10^7$ cycles  |
| Inflammability class according to UL 94  | V0  |
| Designation                              | Air and creepage distances between the power circuits   |
| Standards/regulations                    | IEC 60664   |
|  | EN 50178  |
|  | IEC 62103   |
| Rated surge voltage / insulation         | 6 kV, safe isolation between input and output.<br>4 kV, basic insulation between the outputs. |
| Rated insulation voltage                 | 250 V AC  |

## Relay Module - PLC-2RPT-24DC/1 - 2901639

### Technical data

#### General

|                        |                           |
|------------------------|---------------------------|
| Pollution degree       | 2                         |
| Surge voltage category | III                       |
| Mounting position      | any                       |
| Assembly instructions  | In rows with zero spacing |

#### Connection data

|  |                      |
|--|----------------------|
| Connection method                      | Push-in connection   |
| Stripping length                       | 8 mm                 |
| Conductor cross section stranded min.  | 0.14 mm <sup>2</sup> |
| Conductor cross section stranded max.  | 2.5 mm <sup>2</sup>  |
| Conductor cross section solid min.     | 0.14 mm <sup>2</sup> |
| Conductor cross section solid max.     | 2.5 mm <sup>2</sup>  |
| Conductor cross section AWG/kcmil max  | 14                   |
| Conductor cross section AWG/kcmil min. | 26                   |

### Classifications

#### eCl@ss

|            |          |
|------------|----------|
| eCl@ss 4.0 | 27371102 |
| eCl@ss 4.1 | 27371102 |
| eCl@ss 5.0 | 27371001 |
| eCl@ss 5.1 | 27371001 |
| eCl@ss 6.0 | 27371001 |
| eCl@ss 7.0 | 27371001 |
| eCl@ss 8.0 | 27371001 |

#### ETIM

|          |          |
|----------|----------|
| ETIM 3.0 | EC001504 |
| ETIM 4.0 | EC000196 |
| ETIM 5.0 | EC000196 |

#### UNSPSC

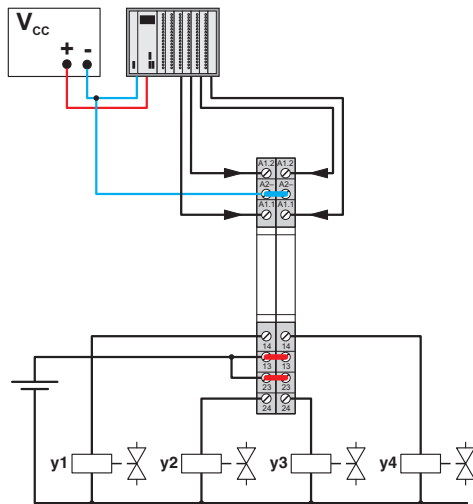
|               |          |
|---------------|----------|
| UNSPSC 6.01   | 30211916 |
| UNSPSC 7.0901 | 39121542 |
| UNSPSC 11     | 39121542 |
| UNSPSC 12.01  | 39121542 |
| UNSPSC 13.2   | 39121542 |



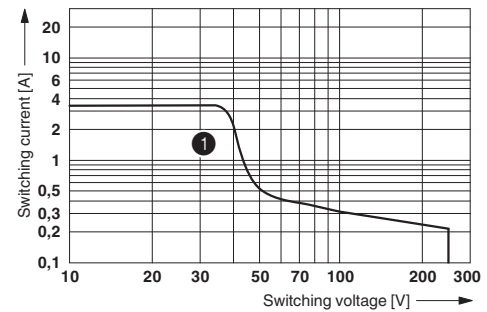
# Relay Module - PLC-2RPT-24DC/1 - 2901639

## Drawings

Application drawing



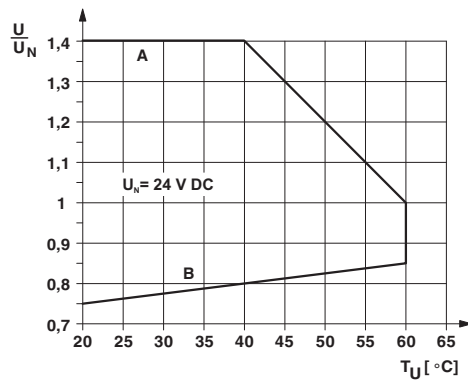
Diagram



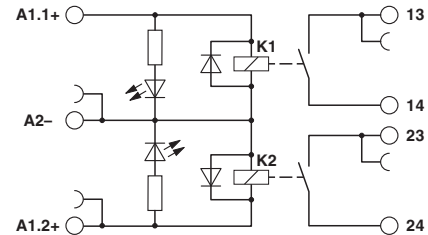
① DC, ohmic load

Interrupting rating

Diagram



Circuit diagram



Operating voltage range