



Chipsmall Limited consists of a professional team with an average of over 10 year of expertise in the distribution of electronic components. Based in Hongkong, we have already established firm and mutual-benefit business relationships with customers from,Europe,America and south Asia,supplying obsolete and hard-to-find components to meet their specific needs.

With the principle of “Quality Parts,Customers Priority,Honest Operation,and Considerate Service”,our business mainly focus on the distribution of electronic components. Line cards we deal with include Microchip,ALPS,ROHM,Xilinx,Pulse,ON,Everlight and Freescale. Main products comprise IC,Modules,Potentiometer,IC Socket,Relay,Connector.Our parts cover such applications as commercial,industrial, and automotives areas.

We are looking forward to setting up business relationship with you and hope to provide you with the best service and solution. Let us make a better world for our industry!



## Contact us

Tel: +86-755-8981 8866 Fax: +86-755-8427 6832

Email & Skype: info@chipsmall.com Web: www.chipsmall.com

Address: A1208, Overseas Decoration Building, #122 Zhenhua RD., Futian, Shenzhen, China



## Filter terminal block - PSR-FTB/20/86 - 2904477


Please be informed that the data shown in this PDF Document is generated from our Online Catalog. Please find the complete data in the user's documentation. Our General Terms of Use for Downloads are valid (<http://phoenixcontact.com/download>)



Terminal block for filtering test pulses from safe semiconductor outputs with adjustable filter values (20  $\mu$ F/86  $\mu$ F), as well as for EMC filtering of 24 V signals up to an amperage of 2 A.



### Key Commercial Data

Packing unit	1 STK
GTIN	 4 046356 831512
GTIN	4046356831512

### Technical data

#### Note

Utilization restriction	EMC: class A product, see manufacturer's declaration in the download area
-------------------------	---

#### Dimensions

Width	6.2 mm
Height	94 mm
Depth	80 mm

#### Ambient conditions

Ambient temperature (operation)	-25 °C ... 55 °C
Ambient temperature (storage/transport)	-25 °C ... 70 °C
Degree of protection	IP20

#### Input data

Nominal input voltage $U_N$	24 V DC $\pm$ 20 % (Control voltage $U_{ST}$ right/left)
Typical input current at $U_N$	max. 20 mA
Protective circuit	Surge protection

#### Output data

Nominal output voltage range	19.2 V DC ... 28.8 V DC (Control voltage $U_{ST}$ right/left)
------------------------------	---

# Filter terminal block - PSR-FTB/20/86 - 2904477

## Technical data

### Output data

Limiting continuous current	max. 2 A (in total for OUT1 + OUT2)
-----------------------------	-------------------------------------

### Connection data, control circuit

Connection name	Control circuits
Connection method	Push-in connection
Stripping length	8 mm
Conductor cross section solid	0.14 mm <sup>2</sup> ... 2.5 mm <sup>2</sup>
Conductor cross section flexible	0.14 mm <sup>2</sup> ... 2.5 mm <sup>2</sup>
Conductor cross section AWG	26 ... 14

### Connection data load circuit

Connection name	Load circuit
Connection method	Push-in connection
Stripping length	8 mm
Conductor cross section solid	0.14 mm <sup>2</sup> ... 2.5 mm <sup>2</sup>
Conductor cross section flexible	0.14 mm <sup>2</sup> ... 2.5 mm <sup>2</sup>
Conductor cross section AWG	26 ... 14

## General

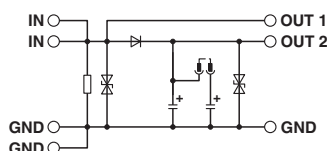
Mounting position	Vertical (horizontal DIN rail)
Assembly instructions	In rows with zero spacing
Operating mode	100% operating factor

## Standards and Regulations

Designation	Air clearances and creepage distances between the power circuits
Standards/regulations	EN 61131
Rated insulation voltage	50 V
Rated surge voltage	1.5 kV
Insulation	Basic insulation
Degree of pollution	2
Overvoltage category	II

## Drawings

Circuit diagram



## Approvals

Approvals

## Filter terminal block - PSR-FTB/20/86 - 2904477

### Approvals

---

Approvals

EAC

---

Ex Approvals

---

### Approval details

EAC



RU C-  
DE.A\*30.B.01082

---

Phoenix Contact 2017 © - all rights reserved  
<http://www.phoenixcontact.com>

PHOENIX CONTACT GmbH & Co. KG  
Flachsmarktstr. 8  
32825 Blomberg  
Germany  
Tel. +49 5235 300  
Fax +49 5235 3 41200  
<http://www.phoenixcontact.com>