



Chipsmall Limited consists of a professional team with an average of over 10 year of expertise in the distribution of electronic components. Based in Hongkong, we have already established firm and mutual-benefit business relationships with customers from,Europe,America and south Asia,supplying obsolete and hard-to-find components to meet their specific needs.

With the principle of “Quality Parts,Customers Priority,Honest Operation,and Considerate Service”,our business mainly focus on the distribution of electronic components. Line cards we deal with include Microchip,ALPS,ROHM,Xilinx,Pulse,ON,Everlight and Freescale. Main products comprise IC,Modules,Potentiometer,IC Socket,Relay,Connector.Our parts cover such applications as commercial,industrial, and automotives areas.

We are looking forward to setting up business relationship with you and hope to provide you with the best service and solution. Let us make a better world for our industry!



Contact us

Tel: +86-755-8981 8866 Fax: +86-755-8427 6832

Email & Skype: info@chipsmall.com Web: www.chipsmall.com

Address: A1208, Overseas Decoration Building, #122 Zhenhua RD., Futian, Shenzhen, China



Type 3 surge protection base element - PLT-SEC-T3-3S-BE - 2905592

Please be informed that the data shown in this PDF Document is generated from our Online Catalog. Please find the complete data in the user's documentation. Our General Terms of Use for Downloads are valid (<http://phoenixcontact.com/download>)



Base element for protective plugs from the PLUGTRAB SEC product series with remote indication contact.

RoHS

Key Commercial Data

Packing unit	1 STK
Custom tariff number	85363090
Country of origin	Germany

Technical data

Dimensions

Height	90 mm
Width	35.4 mm
Depth	51.2 mm
Horizontal pitch	2 Div.

Ambient conditions

Degree of protection	IP20
Ambient temperature (operation)	-40 °C ... 80 °C
Ambient temperature (storage/transport)	-40 °C ... 80 °C
Altitude	≤ 2000 m (amsl (above mean sea level))
Permissible humidity (operation)	5 % ... 95 %
Shock (operation)	30g (half sinus / 11 ms / 3x ±X, ±Y, ±Z)
Vibration (operation)	5g (10 ... 150 Hz/20 cycles/axis/X, Y, Z)

General

IEC test classification	III
	T3

Type 3 surge protection base element - PLT-SEC-T3-3S-BE - 2905592

Technical data

General

EN type	T3
Number of ports	One
Mounting type	DIN rail: 35 mm
Color	traffic grey A RAL 7042
Housing material	PA 6.6-FR
Degree of pollution	2
Flammability rating according to UL 94	V-0
Number of positions	2
Surge protection fault message	Remote indication contact

Protective circuit

Nominal voltage U_N	230/400 V AC (TN-S)
	230/400 V AC (TT)
Nominal frequency f_N	50 Hz (60 Hz)
Maximum continuous voltage U_C	264 V AC
Rated load current I_L	26 A (30 °C)
Short-circuit current rating I_{SCCR}	1.5 kA AC
Max. backup fuse with branch wiring	Not required
Maximum backup fuse for through wiring	25 A (gG / B / C)

Indicator/remote signaling

Connection name	Remote fault indicator contact
Switching function	N/C contact
Connection method	Screw connection
Conductor cross section flexible	0.2 mm ² ... 2.5 mm ²
Conductor cross section solid	0.2 mm ² ... 4 mm ²
Conductor cross section AWG	24 ... 12
Screw thread	M3
Tightening torque	0.8 Nm
Stripping length	8 mm

Connection data

Connection method	Screw connection
Conductor cross section flexible	0.2 mm ² ... 2.5 mm ²
Conductor cross section solid	0.2 mm ² ... 4 mm ²
Conductor cross section AWG	24 ... 12
Screw thread	M3
Tightening torque	0.8 Nm
Stripping length	8 mm

Type 3 surge protection base element - PLT-SEC-T3-3S-BE - 2905592

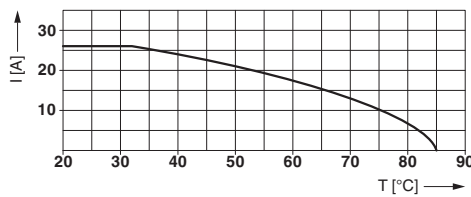
Technical data

Standards and Regulations

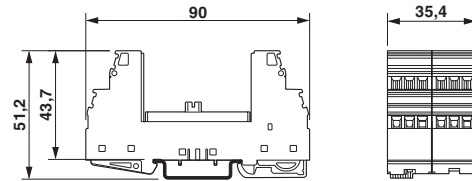
Standards/specifications	IEC 61643-11 2011
	EN 61643-11 2012

Drawings

Diagram

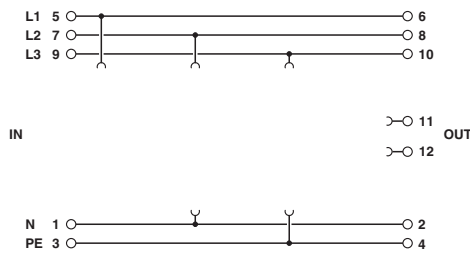


Dimensional drawing



Nominal current depending on ambient temperature

Circuit diagram



Classifications

eCl@ss

eCl@ss 5.1	27130801
eCl@ss 6.0	27130806
eCl@ss 8.0	27130803
eCl@ss 9.0	27130803

ETIM

ETIM 5.0	EC000472
----------	----------

Approvals

Approvals

Type 3 surge protection base element - PLT-SEC-T3-3S-BE - 2905592

Approvals

Approvals

EAC

Ex Approvals

Approval details

EAC RU C-DE.A*30.B01561

Accessories

Accessories

Device marking

Label - EML (20XE)R - 0803452



Label, Roll, white, unlabeled, can be labeled with: THERMOMARK ROLL, THERMOMARK ROLL X1, THERMOMARK X, THERMOMARK S1.1, Mounting type: Adhesive, Lettering field: continuous x 20 mm

Label - EML (20XE)R YE - 0803453



Label, Roll, yellow, unlabeled, can be labeled with: THERMOMARK ROLL, THERMOMARK ROLL X1, THERMOMARK X, THERMOMARK S1.1, Mounting type: Adhesive, Lettering field: continuous x 20 mm

End block

End clamp - CLIPFIX 35 - 3022218



Quick mounting end clamp for NS 35/7,5 DIN rail or NS 35/15 DIN rail, with marking option, width: 9.5 mm, color: gray

Marker pen

Type 3 surge protection base element - PLT-SEC-T3-3S-BE - 2905592

Accessories

Marker pen - X-PEN 0,35 - 0811228



Marker pen without ink cartridge, for manual labeling of markers, labeling extremely wipe-proof, line thickness 0.35 mm

Additional products

Type 3 surge protection plug - PLT-SEC-T3-3S-230-P - 2905236



Replacement plug for type 3 device protection from the PLUGTRAB SEC T3 3S product range. 230 V nominal voltage.