



Chipsmall Limited consists of a professional team with an average of over 10 year of expertise in the distribution of electronic components. Based in Hongkong, we have already established firm and mutual-benefit business relationships with customers from,Europe,America and south Asia,supplying obsolete and hard-to-find components to meet their specific needs.

With the principle of “Quality Parts,Customers Priority,Honest Operation,and Considerate Service”,our business mainly focus on the distribution of electronic components. Line cards we deal with include Microchip,ALPS,ROHM,Xilinx,Pulse,ON,Everlight and Freescale. Main products comprise IC,Modules,Potentiometer,IC Socket,Relay,Connector.Our parts cover such applications as commercial,industrial, and automotives areas.

We are looking forward to setting up business relationship with you and hope to provide you with the best service and solution. Let us make a better world for our industry!



## Contact us

Tel: +86-755-8981 8866 Fax: +86-755-8427 6832

Email & Skype: info@chipsmall.com Web: www.chipsmall.com

Address: A1208, Overseas Decoration Building, #122 Zhenhua RD., Futian, Shenzhen, China



## Electronic housing - ME 22,5 F-UTG TBUS KMGY - 2914851

Please be informed that the data shown in this PDF Document is generated from our Online Catalog. Please find the complete data in the user's documentation. Our General Terms of Use for Downloads are valid (<http://download.phoenixcontact.com>)



Housing base, fully assembled, for use with DIN rail bus connector, (closed housing) and metal foot catch.

### Product Features

- ✓ ME...TBUS connector with 5 parallel contacts can be snapped onto DIN rails to save space
- ✓ Gold contacts for data transmission and power supply (125 V, 8 A)
- ✓ When a device is unplugged from the system as a whole, the signal chain is not interrupted# Supply via standard MINI COMBICON plug



### Key commercial data

Packing unit	1 1
Minimum order quantity	10 1
Weight per Piece (excluding packing)	38.58 GRM
Custom tariff number	85472000
Country of origin	Germany

### Technical data

#### General

Housing type	Component housing
Housing material	Polyamide
Color	light gray

#### Dimensions

Length	99 mm
Constructional height	106 mm
Width	22.5 mm

#### Technical data

Inflammability class according to UL 94	V0
Power dissipation at 20°C in the horizontal mounting position	5.5 W 9.6 W

# Electronic housing - ME 22,5 F-UTG TBUS KMGY - 2914851

## Technical data

### Technical data

Number of positions	16
	24

## Classifications

### eCl@ss

eCl@ss 4.0	27180401
eCl@ss 4.1	27180401
eCl@ss 5.0	27180506
eCl@ss 5.1	27180506
eCl@ss 6.0	27180802
eCl@ss 7.0	27182702
eCl@ss 8.0	27182702

### ETIM

ETIM 2.0	EC001031
ETIM 3.0	EC001031
ETIM 4.0	EC001031
ETIM 5.0	EC001031

### UNSPSC

UNSPSC 6.01	31261501
UNSPSC 7.0901	31261501
UNSPSC 11	31261501
UNSPSC 12.01	31261501
UNSPSC 13.2	31261501

## Approvals

### Approvals

---

#### Approvals

UL Recognized

---

#### Ex Approvals

---

## Electronic housing - ME 22,5 F-UTG TBUS KMGY - 2914851

### Approvals

Approvals submitted

---

### Approval details

UL Recognized 

### Accessories

Accessories

Coding element

Coding star - CR-MSTB - 1734401



Coding section, inserted into the recess in the header or the inverted plug, red insulating material

---

Coding profile - CP-MSTB - 1734634



Coding profile, is inserted into the slot on the plug or inverted header, red insulating material

---

Component housing center part

Electronic housing - ME 45 UTM G GN - 2853417



Intermediate element for modular extension of the volume of the housing in the pitch. The closed intermediate element is 22.5 mm wide.

---

Filler plug

## Electronic housing - ME 22,5 F-UTG TBUS KMGY - 2914851

### Accessories

Electronic housing - ME B-22,5 MSTBO KMGY - 2907965



Filler plugs, for unoccupied terminal points

---

Electronic housing - ME B-22,5 MKDSO KMGY - 2908498



Filler plugs, for unoccupied terminal points

---

Electronic housing - ME B-22,5 MKDSO GN - 2907143



Filler plugs, for unoccupied terminal points

---

### Ground contact

Electronic housing - ME FE-CONTACT - 2908294



Functional earth ground contact, for intermediate elements.

---

### Mounting material

Components of electronic housing - ME-SAS - 2853899



Shield connection clamp for printed circuit terminal block

## Electronic housing - ME 22,5 F-UTG TBUS KMGY - 2914851

### Accessories

---

#### Electronic housing - ME LPZS - 2906911



PCB stop, for soldering onto PCB

---

#### Components of electronic housing - ME-SAS - 2853899



Shield connection clamp for printed circuit terminal block

---

#### Electronic housing - ME LPZS - 2906911



PCB stop, for soldering onto PCB

---

#### Electronic housing - ME MF 17,5 - 2908281

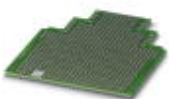


Metal foot catch, for intermediate elements.

---

### PCB

#### Electronic housing - ME LP - 2906908



PCB, for custom fitting, with contact to DIN rail (EN 60715)

---

## Electronic housing - ME 22,5 F-UTG TBUS KMGY - 2914851

### Accessories

#### Printed circuit board terminal

##### Printed-circuit board connector - MKDSO 2,5/ 4-L - 1707234



PCB terminal block, Nominal current: 24 A, Nom. voltage: 400 V, Pitch: 5 mm, Number of positions: 4, Connection method: Screw connection, Mounting: Soldering, Conductor/PCB connection direction: 0 °, Color: green, Article with lateral pin exit

---

##### Basic terminal block - MKDSO 2,5/ 4-R - 1707247



PCB terminal block, Nominal current: 24 A, Nom. voltage: 400 V, Pitch: 5 mm, Number of positions: 4, Connection method: Screw connection, Mounting: Soldering, Conductor/PCB connection direction: 0 °, Color: green, Article with lateral pin exit

---

#### Required add-on products

##### Electronic housing - ME 22,5 OT-MSTBO SET - 2907444

Housing upper part, complete with 4 pairs of COMBICON headers and plugs



---

##### Electronic housing - ME 22,5 OT-MSTBO GN - 2907169

Upper part of housing, for COMBICON connection, double-level



---

##### Electronic housing - ME 22,5 OT-1MSTBO GN - 2709558

Upper part of housing, for COMBICON connection, single-level



# Electronic housing - ME 22,5 F-UTG TBUS KMGY - 2914851

## Accessories

Electronic housing - ME 22,5 OT-MKDSO SET - 2907473

Housing upper part, complete with PCB termination blocks for full equipping. 16-pos., housing width: 22.5 mm



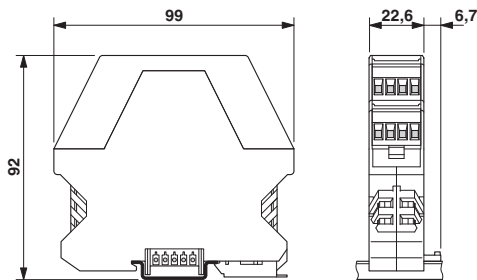
Electronic housing - ME 22,5 OT-MKDSO GN - 2907172

Housing upper part, for printed circuit terminal block connection



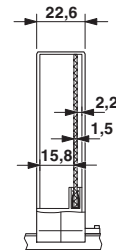
## Drawings

Dimensioned drawing



Dimensions of the electronic housing ME 22.5 flat.../TBUS... with double-level upper part

Dimensioned drawing

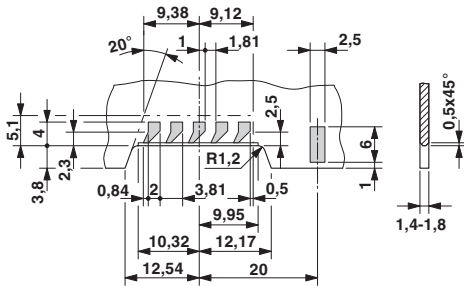


Internal housing dimensions, electronics housing ME 22.5 flat.../TBUS...



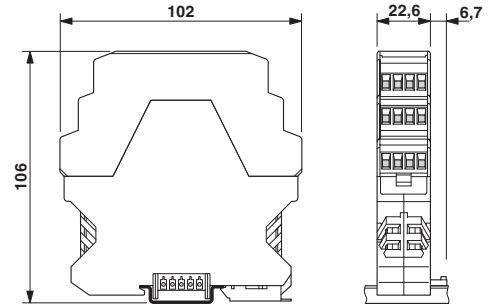
# Electronic housing - ME 22,5 F-UTG TBUS KMGY - 2914851

Dimensioned drawing



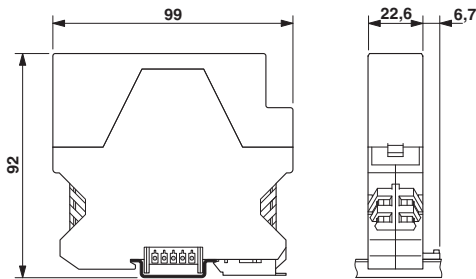
Detailed dimensional drawing of the DIN rail connector contact pads

Dimensioned drawing



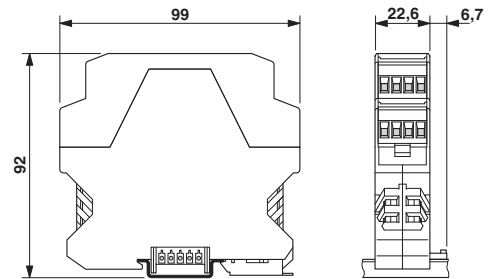
Dimensions of the electronic housing ME 22.5 flat.../TBUS... with triple-level upper part

Dimensioned drawing



Dimensions of the electronic housing ME 22.5 flat.../TBUS... with single-level upper part

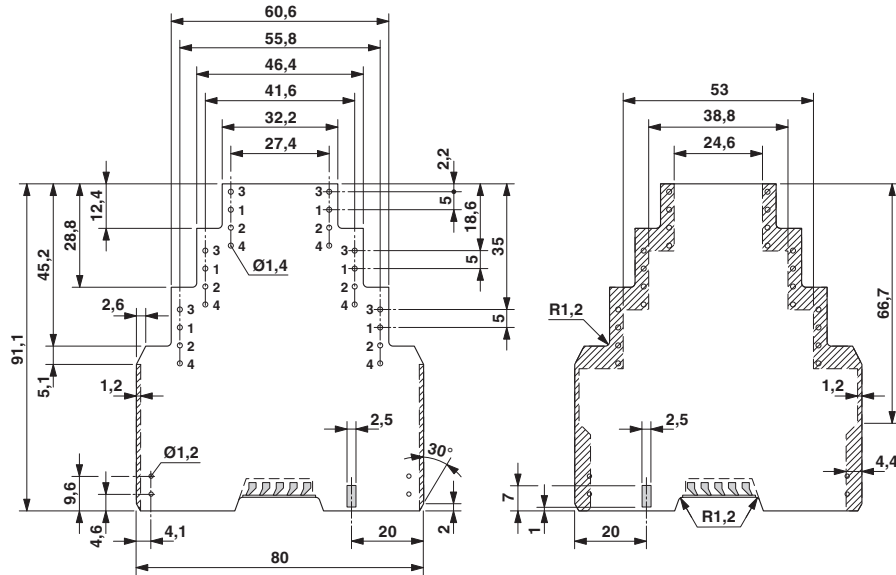
Dimensioned drawing



Dimensions of the electronic housing ME 22.5 flat.../TBUS... with double-level upper part

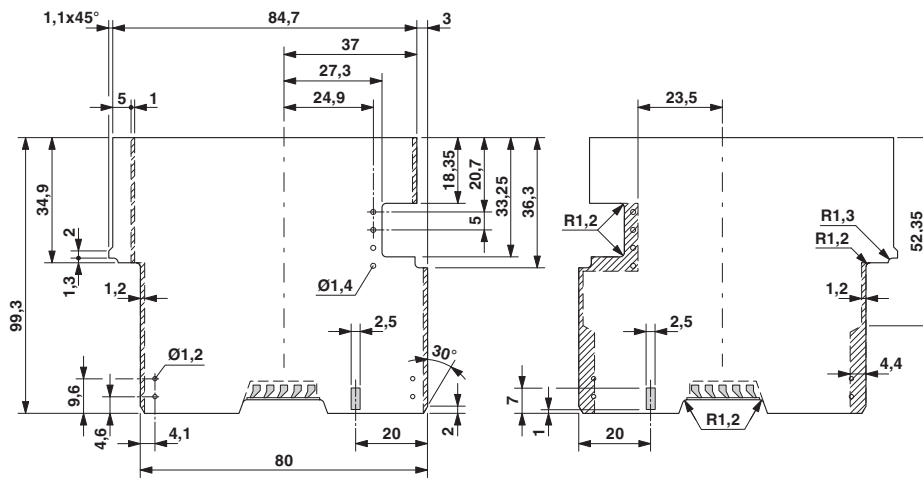
# Electronic housing - ME 22,5 F-UTG TBUS KMGY - 2914851

Dimensioned drawing



Dimensional drawing of the ME 22.5 flat... printed circuit board if the double level upper part is used

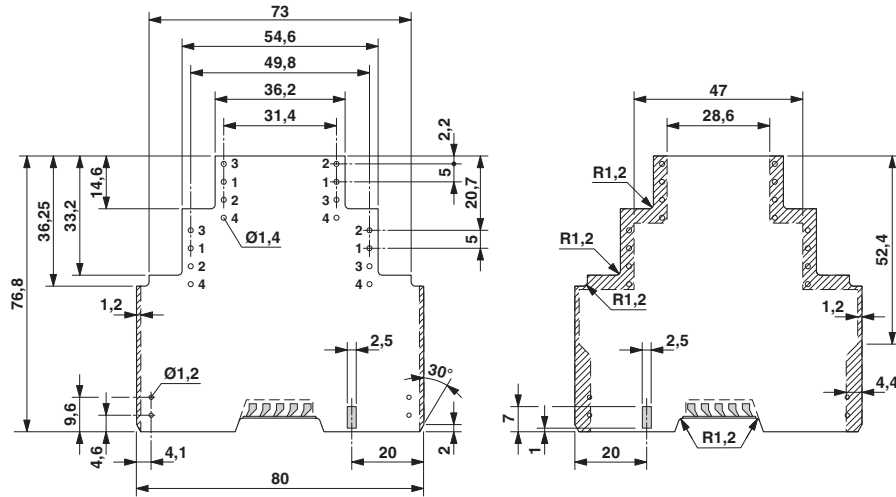
Dimensioned drawing



Dimensional drawing of the ME 22.5 flat...TBUS... printed circuit board if the double level upper part is used

# Electronic housing - ME 22,5 F-UTG TBUS KMGY - 2914851

Dimensioned drawing



Dimensional drawing of the ME 22.5 flat... printed circuit board if the double level upper part is used