



Chipsmall Limited consists of a professional team with an average of over 10 year of expertise in the distribution of electronic components. Based in Hongkong, we have already established firm and mutual-benefit business relationships with customers from,Europe,America and south Asia,supplying obsolete and hard-to-find components to meet their specific needs.

With the principle of “Quality Parts,Customers Priority,Honest Operation,and Considerate Service”,our business mainly focus on the distribution of electronic components. Line cards we deal with include Microchip,ALPS,ROHM,Xilinx,Pulse,ON,Everlight and Freescale. Main products comprise IC,Modules,Potentiometer,IC Socket,Relay,Connector.Our parts cover such applications as commercial,industrial, and automotives areas.

We are looking forward to setting up business relationship with you and hope to provide you with the best service and solution. Let us make a better world for our industry!



Contact us

Tel: +86-755-8981 8866 Fax: +86-755-8427 6832

Email & Skype: info@chipsmall.com Web: www.chipsmall.com

Address: A1208, Overseas Decoration Building, #122 Zhenhua RD., Futian, Shenzhen, China



THIS DRAWING IS UNPUBLISHED.

RELEASED FOR PUBLICATION

ALL RIGHTS RESERVED.

© COPYRIGHT - By -

LOC FB DIST 00

REVISIONS

P	LTR	DESCRIPTION	DATE	DWN	APVD
P		REVISED PER ECO-11-005033	29MAR11	RK	HMR

NAME	POS	IN TUBE P/N	QTY'S	CT POST HDR ASS'Y (BOX-H DIP)	COLOR	NAME	POS	IN TUBE P/N	QTY'S	CT POST HDR ASS'Y (BOX-H DIP)	COLOR							
TUBE PACKING AMP CT CONN POST HDR ASS'Y (BOX-H DIP)						TUBE PACKING AMP CT CONN POST HDR ASS'Y (BOX-H DIP)												
												12		3-292164-2	15	3-292250-2	BLUE	
												11		3- -1	20	3- -1		
												10		3- -0	20	3- -0		
												9		2- -9	20	2- -9		
												8		2- -8	25	2- -8		
												7		2- -7	30	2- -7		
												6		2- -6	30	2- -6		
												5		2- -5	40	2- -5		
												4		2- -4	45	2- -4		
												3		2- -3	60	2- -3		
												2		2-292164-2	80	2-292250-2		
												15		1-292164-5	15	1-292250-5		NATURAL (WHITE)
												14		1- -4	15	1- -4		
												13		1- -3	15	1- -3		
12		1- -2	15	1- -2														
11		1- -1	20	1- -1														
10		1- -0	20	1- -0														
9		-9	20	-9														
8		-8	25	-8														
7		-7	30	-7														
6		-6	30	-6														
5		-5	40	-5														
4		-4	45	-4														
3		-3	60	-3														
2		292164-2	80	292250-2														

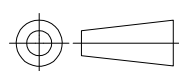
NOTE:

1. TUBE P/N: 6-720999-1 (P.V.C)
2. THIS PRODUCT IS IN TUBE PACKING OF P/N 292250

THIS DRAWING IS A CONTROLLED DOCUMENT.

DIMENSIONS:

mm



TOLERANCES UNLESS OTHERWISE SPECIFIED:

- 0 PLC ± -
- 1 PLC ± -
- 2 PLC ± -
- 3 PLC ± -
- 4 PLC ± -
- ANGLES ± -
- FINISH ± -

MATERIAL

DWN J.JIANG 23JAN03
 CHK S.YAO 23JAN03
 APVD T.SASAKI 23JAN03
 PRODUCT SPEC
 108-60016
 APPLICATION SPEC



TUBE PACKING AMP CT CONN.
POST HDR ASS'Y (BOX-H DIP)

SIZE A3 CAGE CODE 00779 DRAWING NO C-292164 RESTRICTED TO -

CUSTOMER DRAWING

SCALE // SHEET 1 OF 1 REV P