



Chipsmall Limited consists of a professional team with an average of over 10 year of expertise in the distribution of electronic components. Based in Hongkong, we have already established firm and mutual-benefit business relationships with customers from,Europe,America and south Asia,supplying obsolete and hard-to-find components to meet their specific needs.

With the principle of “Quality Parts,Customers Priority,Honest Operation,and Considerate Service”,our business mainly focus on the distribution of electronic components. Line cards we deal with include Microchip,ALPS,ROHM,Xilinx,Pulse,ON,Everlight and Freescale. Main products comprise IC,Modules,Potentiometer,IC Socket,Relay,Connector.Our parts cover such applications as commercial,industrial, and automotives areas.

We are looking forward to setting up business relationship with you and hope to provide you with the best service and solution. Let us make a better world for our industry!



Contact us

Tel: +86-755-8981 8866 Fax: +86-755-8427 6832

Email & Skype: info@chipsmall.com Web: www.chipsmall.com

Address: A1208, Overseas Decoration Building, #122 Zhenhua RD., Futian, Shenzhen, China

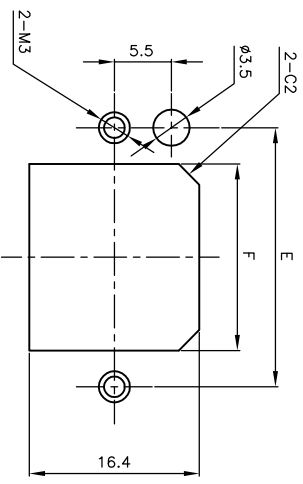
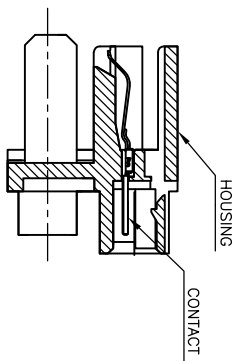
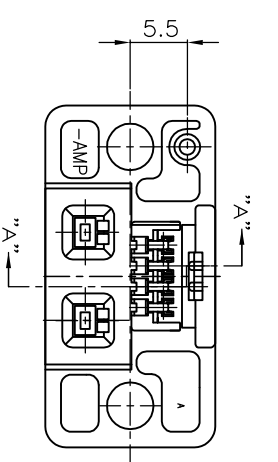
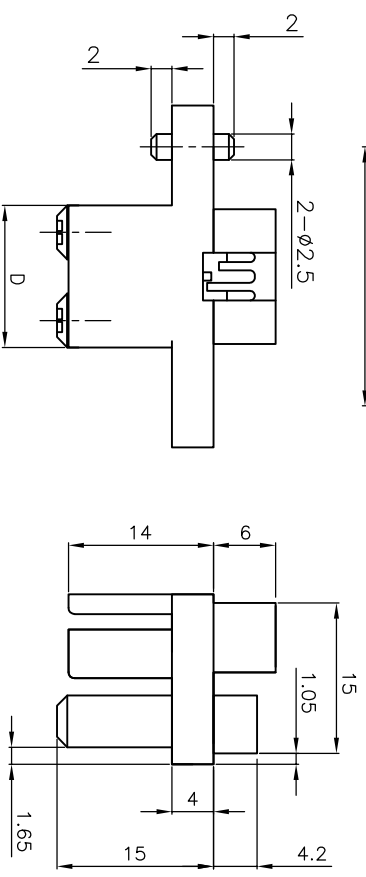
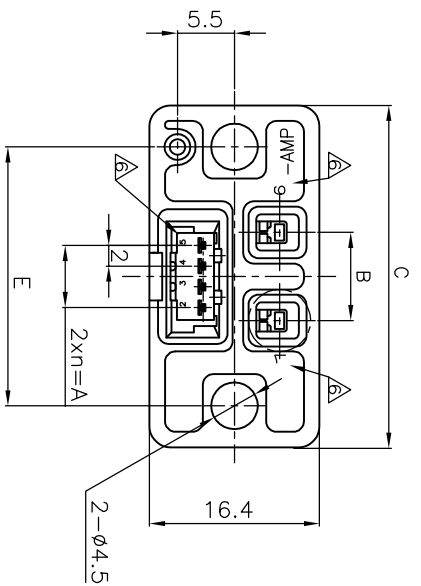


REV	DESCRIPTION	DATE	DMN	APVD
A1	REVISED ECR-09-008281	10APR09	D.S	S.Y

REVISIONS

NOTES:

- △ MATERIAL: HOUSING: THERMOPLASTIC, COLOR: BLACK 94V-0
- CONTACT: COPPER ALLOY
- FINISH: MATING SIDE: PLATE NICKEL OVERALL PLATE COLD
- CT SIDE: PLATE NICKEL ALL OVER MATTE TIN PL.
- 2. USE UP CONTACT 175151, 175152
- 3. RECOMMENDED PANEL CUT DIMENSION



RECOMMENDED PANEL CUT DIMENSION
 (GENERAL TOLERANCE ±0.2)

- 4. MATING CONN: 292180
- 5. USE CT REC. CONN: 173977 & 175778
- △ CIRCUIT NO.: SEE TABLE

CIRCUIT NO	1, 2, 3, 4, 5, 6	18	25	13, 7	33	8, 5	6	3	6	292184-1
DMN	F	E	D	C	B	A	n	Pos.	PART NUMBER	

THIS DRAWING IS A CONTROLLED DOCUMENT.

DMN	JJIANG	05FEB03	NAME	Tyco Electronics Corporation	Shanghai, P.R.China, 200233
CHK	S.YAO	05FEB03	PRODUCT SPEC	108-60022	
APVD	T.SASAKI	05FEB03	APPLICATION SPEC		

RECEPTACLE ASS'Y 6POS. (2-4)
 FOR HYBRID MINI DRAWER CONNECTOR

DIMENSIONS:	MM	TOLERANCES UNLESS OTHERWISE SPECIFIED:	±
		0 P/C	±
		1 P/C	±
		2 P/C	±
		3 P/C	±
		4 P/C	±
		ANGLES	±
			±

TOLERANCES UNLESS OTHERWISE SPECIFIED:	±0.2
10>±	±0.25
30>±	±0.3
100>±	±0.3
ANGLE	±3°

MATERIAL	SEE NOTE	FINISH	SEE NOTE	CUSTOMER DRAWING	SIZE	DATE CODE	DRAWING NO	RESTRICTED TO
					A3	00779	292184	