



Chipsmall Limited consists of a professional team with an average of over 10 year of expertise in the distribution of electronic components. Based in Hongkong, we have already established firm and mutual-benefit business relationships with customers from,Europe,America and south Asia,supplying obsolete and hard-to-find components to meet their specific needs.

With the principle of “Quality Parts,Customers Priority,Honest Operation,and Considerate Service”,our business mainly focus on the distribution of electronic components. Line cards we deal with include Microchip,ALPS,ROHM,Xilinx,Pulse,ON,Everlight and Freescale. Main products comprise IC,Modules,Potentiometer,IC Socket,Relay,Connector.Our parts cover such applications as commercial,industrial, and automotives areas.

We are looking forward to setting up business relationship with you and hope to provide you with the best service and solution. Let us make a better world for our industry!



Contact us

Tel: +86-755-8981 8866 Fax: +86-755-8427 6832

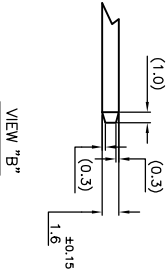
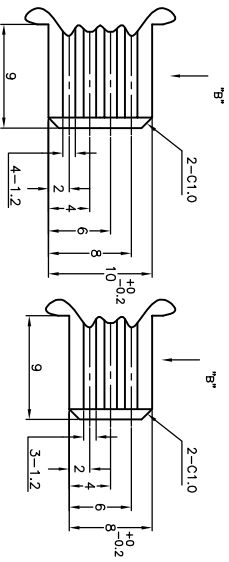
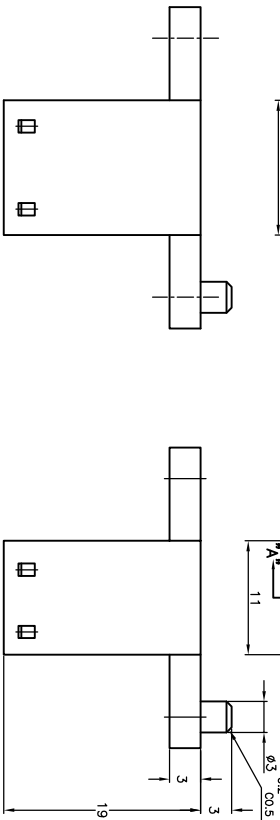
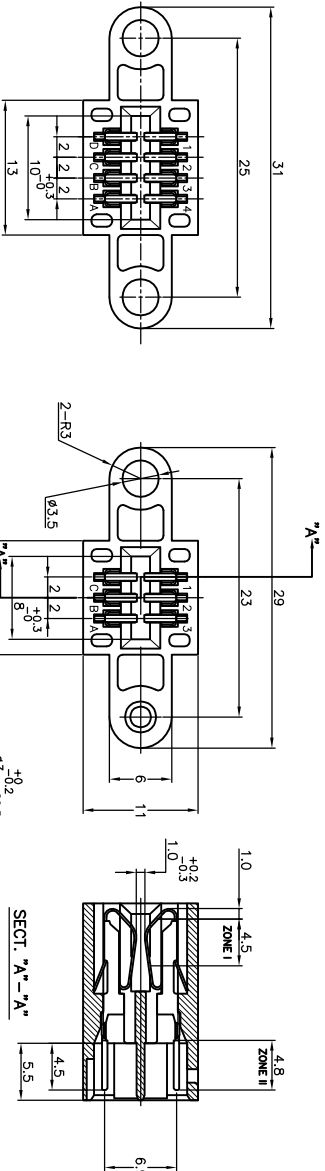
Email & Skype: info@chipsmall.com Web: www.chipsmall.com

Address: A1208, Overseas Decoration Building, #122 Zhenhua RD., Futian, Shenzhen, China



NOTES:

1. MATERIAL: H.S.G: GLASS-FILLED P.B.T COLOR: BLACK
CONTACT: COPPER ALLOY
2. FINISH: CONTACT: MATTE TIN PLATE NICKEL UNDER-PLATE ALL OVER.
3. FINISH: CONTACT: GOLD PLATE 0.15-0.3um AT CONTACT AREA ZONE I
MATTE TIN PLATE 0.1-0.3um AT CONTACT AREA ZONE II
NICKEL UNDER-PLATE ALL OVER.
4. MATING CONN. (WIRE SIDE AWG#26-#28)
6POS: TPPE173977-3 OR 175778-3
8POS: TPPE173977-4 OR 175778-4
5. SPEC.: CURRENT RATING 2A MAX./PIN
6. RECOMMENDED MATING P.C.B DIMENSIONS



8POS

6POS

8	292204-3
8	292204-2
6	292204-1
FINISH	PART NUMBER

THIS DRAWING IS A CONTROLLED DOCUMENT.

DIMENSIONS:		TOLERANCES UNLESS OTHERWISE SPECIFIED:	
MM		0 PLC	± 0.15
		1 PLC	± 0.15
		2 PLC	± 0.15
		3 PLC	± 0.15
		4 PLC	± 0.15
		ANGLES	± 1°

MATERIAL		FINISH	
SEE NOTES		SEE NOTES	

TOLERANCES UNLESS OTHERWISE SPECIFIED:	
10>*	± 0.2
30>*>10	± 0.25
100>*>30	± 0.3
ANGLE	± 3°

CUSTOMER DRAWING	
SIZE	CAGE CODE
A3	00779
DRAWING NO	
2922204	
SCALE	
2:1	

ASSEMBLY (6P & 8P)	
FOR CT CARD EDGE CONNECTOR	
RESTRICTED TO	
-	

DMN	
DMN	05FE803
CHK	05FE803
APPD	05FE803
NAME	

TYO Electronics	
Tyco Electronics Corporation	
Shanghai, P.R.China.200233	