



Chipsmall Limited consists of a professional team with an average of over 10 year of expertise in the distribution of electronic components. Based in Hongkong, we have already established firm and mutual-benefit business relationships with customers from,Europe,America and south Asia,supplying obsolete and hard-to-find components to meet their specific needs.

With the principle of "Quality Parts,Customers Priority,Honest Operation,and Considerate Service",our business mainly focus on the distribution of electronic components. Line cards we deal with include Microchip,ALPS,ROHM,Xilinx,Pulse,ON,Everlight and Freescale. Main products comprise IC,Modules,Potentiometer,IC Socket,Relay,Connector.Our parts cover such applications as commercial,industrial, and automotives areas.

We are looking forward to setting up business relationship with you and hope to provide you with the best service and solution. Let us make a better world for our industry!



Contact us

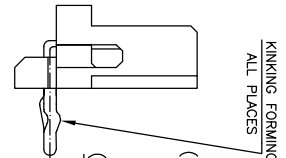
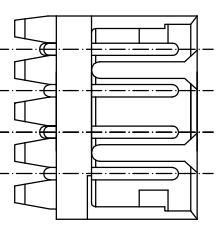
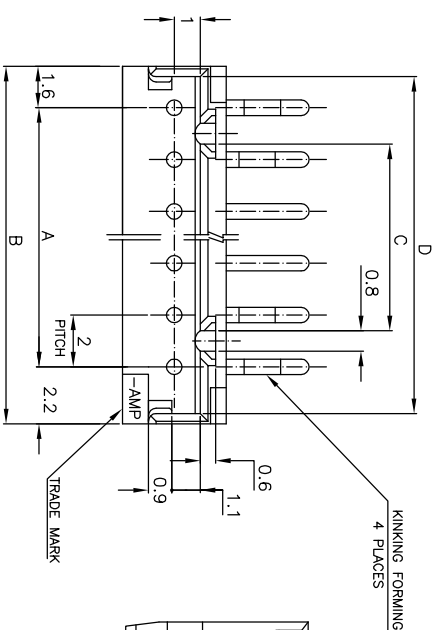
Tel: +86-755-8981 8866 Fax: +86-755-8427 6832

Email & Skype: info@chipsmall.com Web: www.chipsmall.com

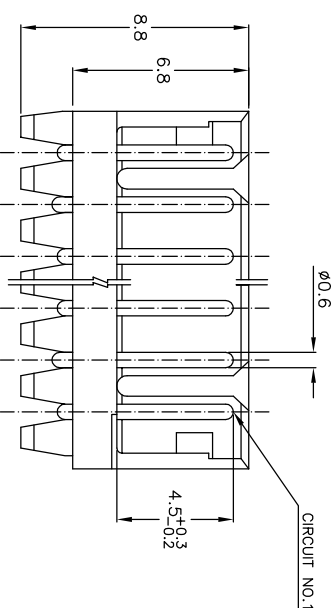
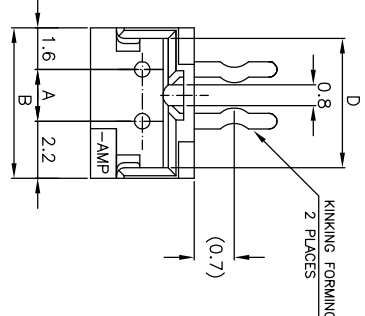
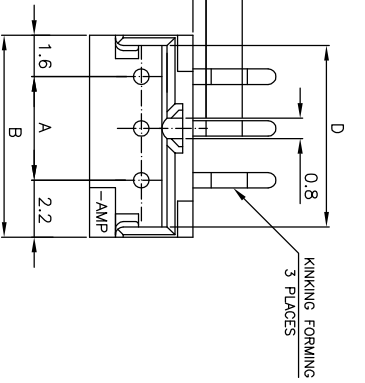
Address: A1208, Overseas Decoration Building, #122 Zhenhua RD., Futian, Shenzhen, China



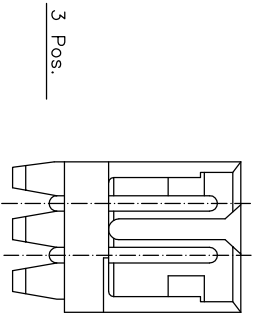
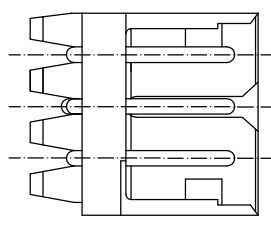
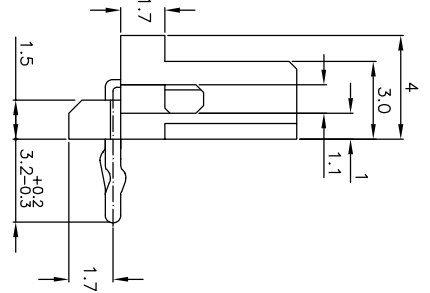
| REV | DESCRIPTION | DATE | BY | APP'D |
|-----|-----------------------|---------|-----|-------|
| A | REVISED ECR-07-000873 | 16JAN07 | C.Z | S.Y |



4 Pos.
 (SCALE 4-1)

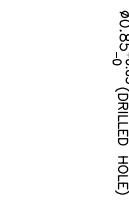
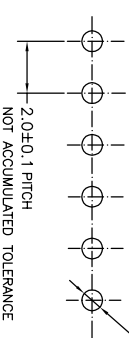


5~15 Pos.



- NOTES:
- MATERIAL: NYLON 66 (UL94V-0)
 POST - TIN BRASS
 - APPLICABLE REPLACEMENT P/N 173977
 - THIS PART HAS BEEN OBSOLETE.

| 7-292253-4 | 5-292253-3 | 3-292253-1 | 1-292253-5 | 15 | 28 | 31.8 | 25.2 | 31.0 |
|------------|------------|------------|------------|------|----|------|------|------|
| -4 | 5 | -4 | 3 | -4 | 1 | -4 | 14 | 26 |
| -3 | 5 | -3 | 3 | -3 | 13 | 24 | 27.8 | 21.2 |
| -2 | 5 | -2 | 3 | -2 | 12 | 22 | 25.8 | 19.2 |
| -1 | 5 | -1 | 3 | -1 | 11 | 20 | 23.8 | 17.2 |
| 0 | 5 | 0 | 3 | 0 | 10 | 18 | 21.8 | 15.2 |
| -9 | 4 | -9 | 2 | -9 | 9 | 16 | 19.8 | 13.2 |
| -8 | 4 | -8 | 2 | -8 | 8 | 14 | 17.8 | 11.2 |
| -7 | 4 | -7 | 2 | -7 | 7 | 12 | 15.8 | 9.2 |
| -6 | 4 | -6 | 2 | -6 | 6 | 10 | 13.8 | 7.2 |
| -5 | 4 | -5 | 2 | -5 | 5 | 8 | 11.8 | 5.2 |
| -4 | 4 | -4 | 2 | -4 | 4 | 6 | 9.8 | 3.2 |
| -3 | 4 | -3 | 2 | -3 | 3 | 4 | 7.8 | 1.2 |
| BLACK | YELLOW | BLUE | NATURAL | Pos. | A | B | C | D |



RECOMMENDABLE PCB LAYOUT
 (PCB THK:0.8-1.6)

TOLERANCES UNLESS OTHERWISE SPECIFIED:

| | | |
|-------|-----|-------|
| 10 > | * | ±0.2 |
| 30 > | * | ±0.25 |
| 100 > | * | ±0.3 |
| ANGLE | >30 | ±3 |

THIS DRAWING IS A CONTROLLED DOCUMENT.

| | | | |
|------------------|-----------|---------|-----------------------------------|
| DMN | S.XU | 31JAN03 | TYCO Electronics Corporation |
| CHK | S.YAO | 31JAN03 | SHANGHAI, CHINA |
| AP'D | T.SASAKI | 31JAN03 | POST HEADER ASS'Y HORIZONTAL TYPE |
| PRODUCT SPEC | 108-60016 | | (AMP CT CONNECTOR 2mm PITCH) |
| APPLICATION SPEC | | | |
| WEIGHT | | | |

| | | | | |
|----------------|----------|--|----------|------------------|
| MATERIAL | SEE NOTE | FINISH | SEE NOTE | CUSTOMER DRAWING |
| DIMENSIONS: MM | | TOLERANCES UNLESS OTHERWISE SPECIFIED: | | |
| | | 0 PIC | ± | |
| | | 1 PIC | ± | |
| | | 2 PIC | ± | |
| | | 3 PIC | ± | |
| | | 4 PIC | ± | |
| | | ANGLES | ± | |
| SIZE | A3 | DWG CODE | 292253 | RESTRICTED TO |
| DATE | 00779 | DRAWING NO | 292253 | |
| SCALE | 5:1 | SHEET | 1 OF 1 | REV |
| | | | | A |