



Chipsmall Limited consists of a professional team with an average of over 10 year of expertise in the distribution of electronic components. Based in Hongkong, we have already established firm and mutual-benefit business relationships with customers from,Europe,America and south Asia,supplying obsolete and hard-to-find components to meet their specific needs.

With the principle of “Quality Parts,Customers Priority,Honest Operation,and Considerate Service”,our business mainly focus on the distribution of electronic components. Line cards we deal with include Microchip,ALPS,ROHM,Xilinx,Pulse,ON,Everlight and Freescale. Main products comprise IC,Modules,Potentiometer,IC Socket,Relay,Connector.Our parts cover such applications as commercial,industrial, and automotives areas.

We are looking forward to setting up business relationship with you and hope to provide you with the best service and solution. Let us make a better world for our industry!



## Contact us

Tel: +86-755-8981 8866 Fax: +86-755-8427 6832

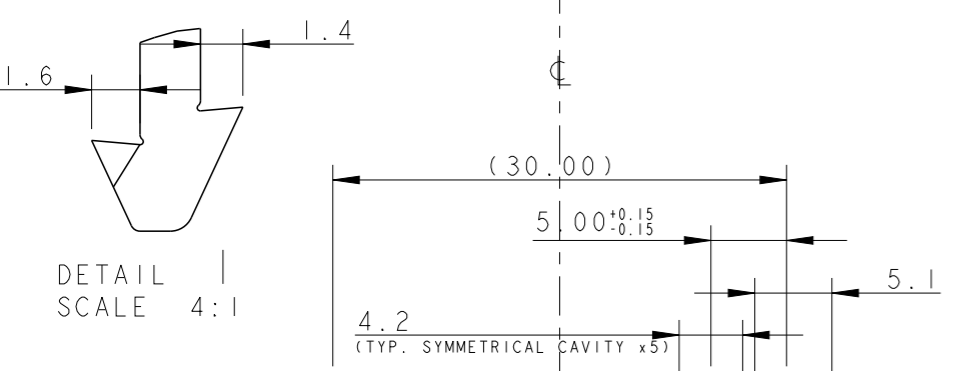
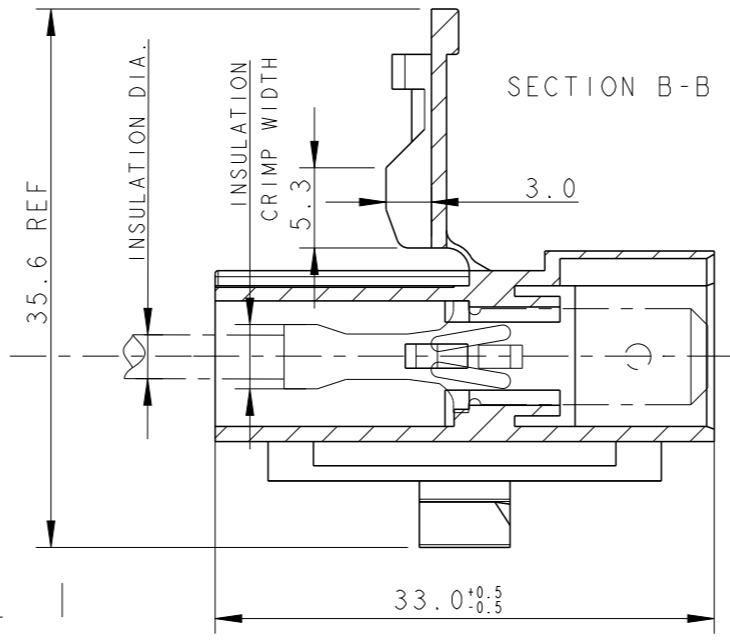
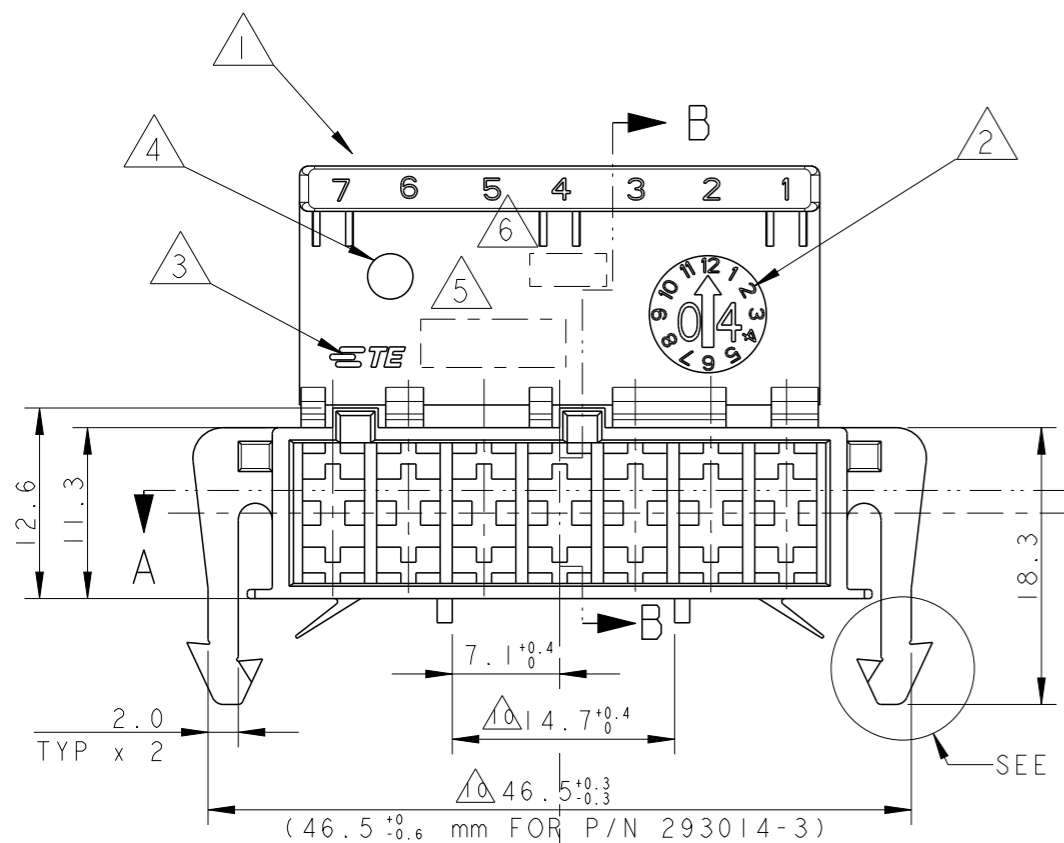
Email & Skype: info@chipsmall.com Web: www.chipsmall.com

Address: A1208, Overseas Decoration Building, #122 Zhenhua RD., Futian, Shenzhen, China

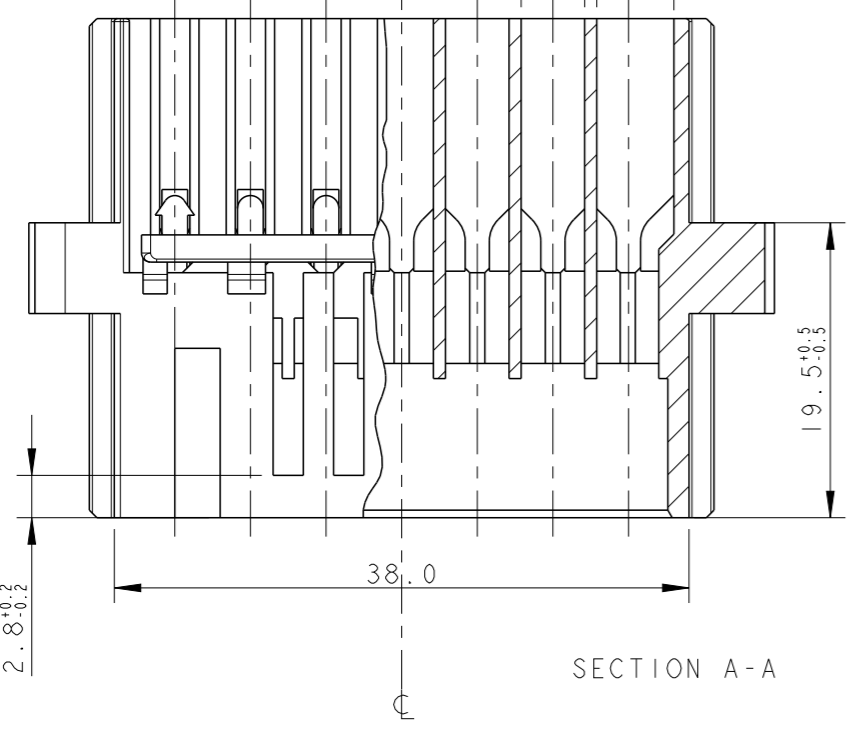
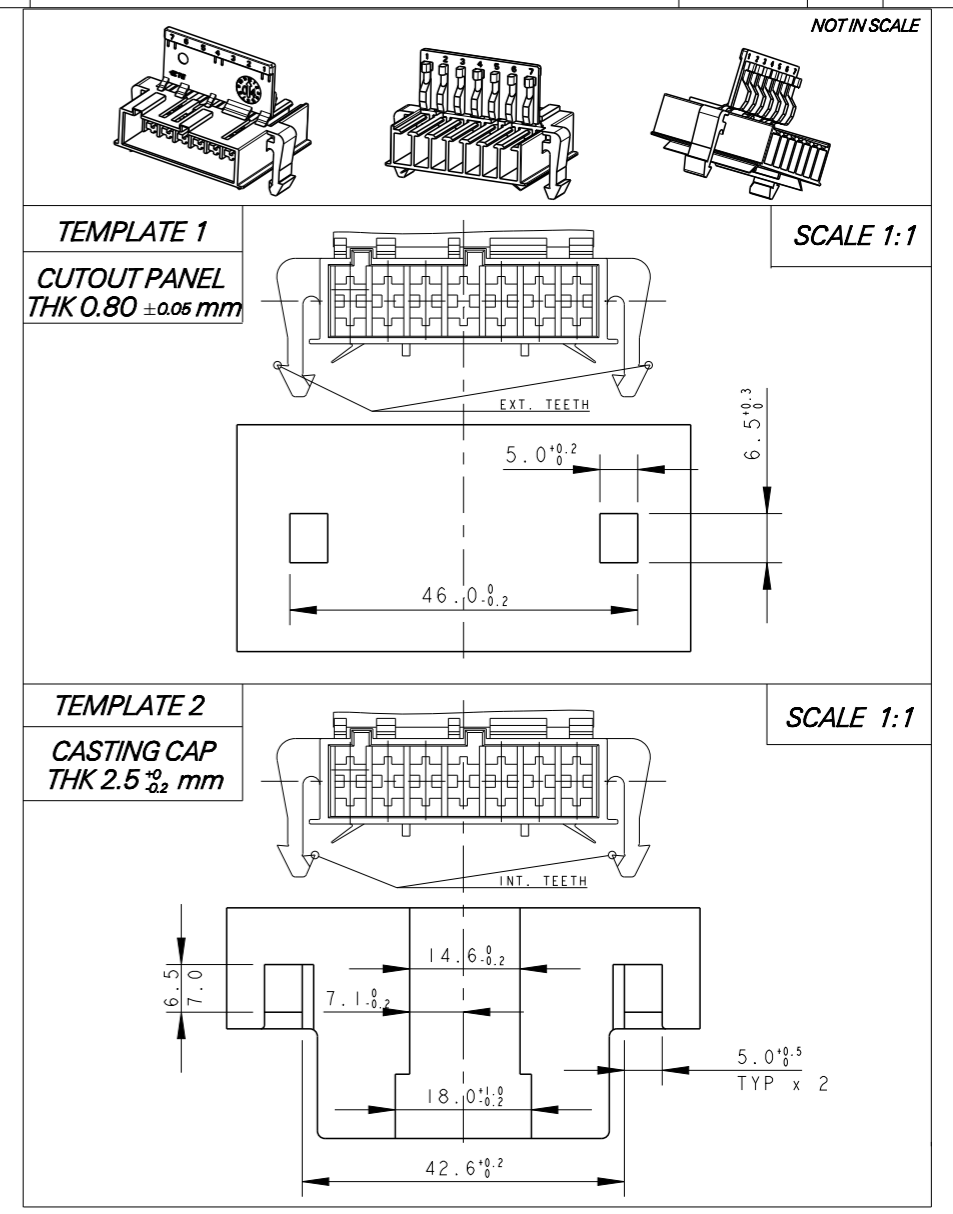


THIS DRAWING IS UNPUBLISHED. RELEASED FOR PUBLICATION 2004  
 © COPYRIGHT 2004 BY - ALL RIGHTS RESERVED.

LOC	DIST	REVISIONS			
P	LTR	DESCRIPTION	DATE	DWN	APVD
1	-				
	A9	ECR-12-022176	31DEC2012	C. J	R. P
	A10	ECR-15-009863	30JUN2015	KD	RR
	A11	ECR-15-012957	04SEP2015	KD	RR
	A12	ECR-16-013321	27SEP2016	KD	RR



- NOTES:
- 1) CIRCUIT IDENTIFICATION NUMBERS 1 TO 7, BOTH SIDES
  - 2) DATE CODE
  - 3) TE TRADEMARK
  - 4) MOULD CAVITY IDENTIFICATION
  - 5) TE - P/N
  - 6) RAW MATERIAL CODE
  - 7) CONNECTOR HOUSING SUITABLE FOR MATING WITH:  
 (PROPERLY CODED WITH RELEVANT APPLICATION MACHINE)  
 - AMP MONOSHAP Mark II TAB CONNECTOR, P/N X-284477-2  
 - AMP MONOSHAP Mark I TAB CONNECTOR, P/N I-293004-7
  - 8) CAVITIES SUITABLE FOR .250" SERIES FAST-IN-ON TAB CONTACT  
 ACCORDING TO NORM "DIN 46 343"  
 MAX INS. DIA.: 2.8 mm; MAX INS. CRIMP WIDTH: 3.3 mm
  - 9) PRELIMINARY - NOT RELEASED FOR PRODUCTION
  - 10) ONLY FOR 293014-2, 14.7 +0.4/-0.1 (LOCATION C4)  
 46.5 +0.3/-0.4 (LOCATION C4)
  - 11) ONLY FOR 293014-2, CONNECTOR UN-MATING FORCE WITH  
 MATING PART MONO-SHAPE MKI IS MIN. 30N



REV	TE P/N	MATERIAL
A	293014-3	PA66/6 UNFILLED, UL94 V0
A	293014-2	PA66 UNFILLED, UL94-V0 GWT, NATURAL
A	293014-1	PA6 UNFILLED, NATURAL COLOR ACCORDING TO IEC 60335-1 NORM

THIS DRAWING IS A CONTROLLED DOCUMENT.

DIMENSIONS: mm	TOLERANCES UNLESS OTHERWISE SPECIFIED: 0 PLC ±. 1 PLC ±0.3 2 PLC ±. 3 PLC ±. 4 PLC ±. ANGLES ±° FINISH -	DWN U. AIME 20FEB2004 CHK G. TURCO 20FEB2004 APVD 20FEB2004 PRODUCT SPEC 108-20247 APPLICATION SPEC - WEIGHT -	NAME <b>7 POSITION TAB HOUSING FOR MOTOR MOUNTING RAST 5</b>
MATERIAL SEE TABLE		Customer Drawing	SIZE A300779 CAGE CODE C-293014 DRAWING NO. RESTRICTED TO -

SCALE 2:1 SHEET 1 OF 1 REV A12