



Chipsmall Limited consists of a professional team with an average of over 10 year of expertise in the distribution of electronic components. Based in Hongkong, we have already established firm and mutual-benefit business relationships with customers from,Europe,America and south Asia,supplying obsolete and hard-to-find components to meet their specific needs.

With the principle of “Quality Parts,Customers Priority,Honest Operation,and Considerate Service”,our business mainly focus on the distribution of electronic components. Line cards we deal with include Microchip,ALPS,ROHM,Xilinx,Pulse,ON,Everlight and Freescale. Main products comprise IC,Modules,Potentiometer,IC Socket,Relay,Connector.Our parts cover such applications as commercial,industrial, and automotives areas.

We are looking forward to setting up business relationship with you and hope to provide you with the best service and solution. Let us make a better world for our industry!



Contact us

Tel: +86-755-8981 8866 Fax: +86-755-8427 6832

Email & Skype: info@chipsmall.com Web: www.chipsmall.com

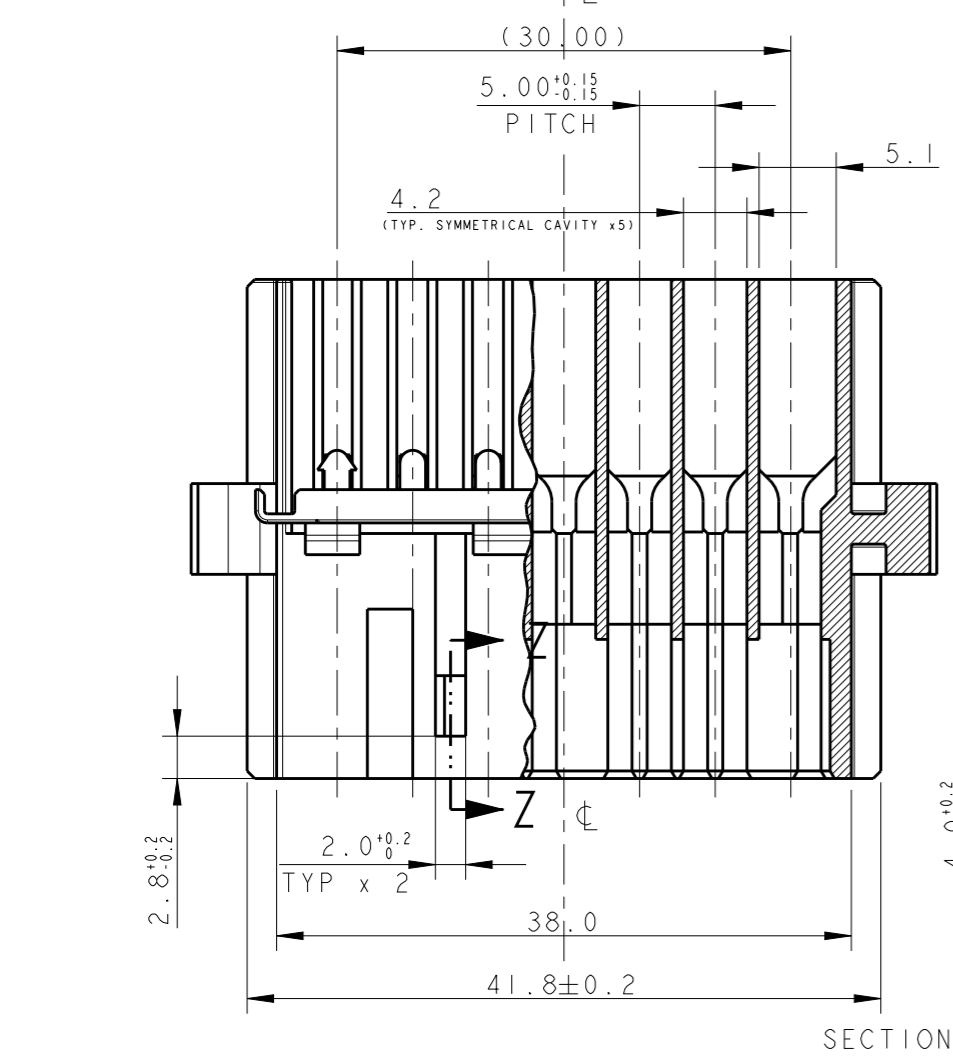
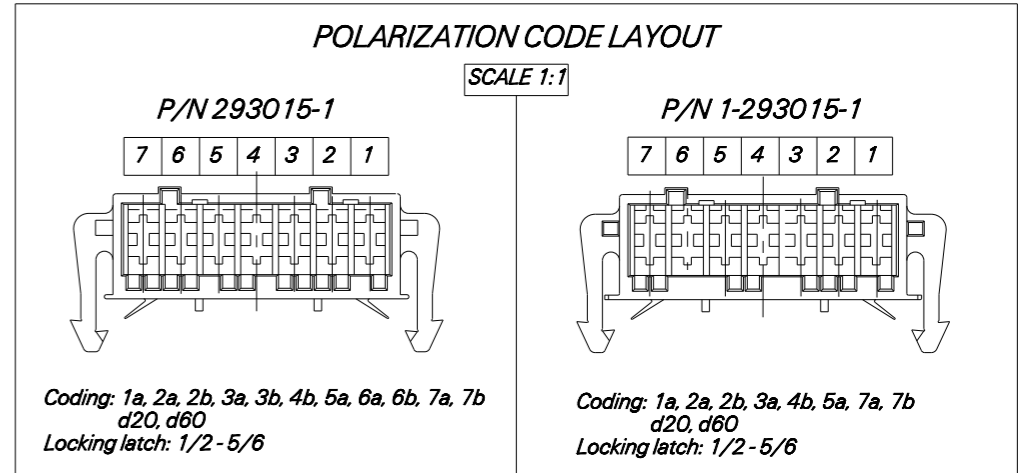
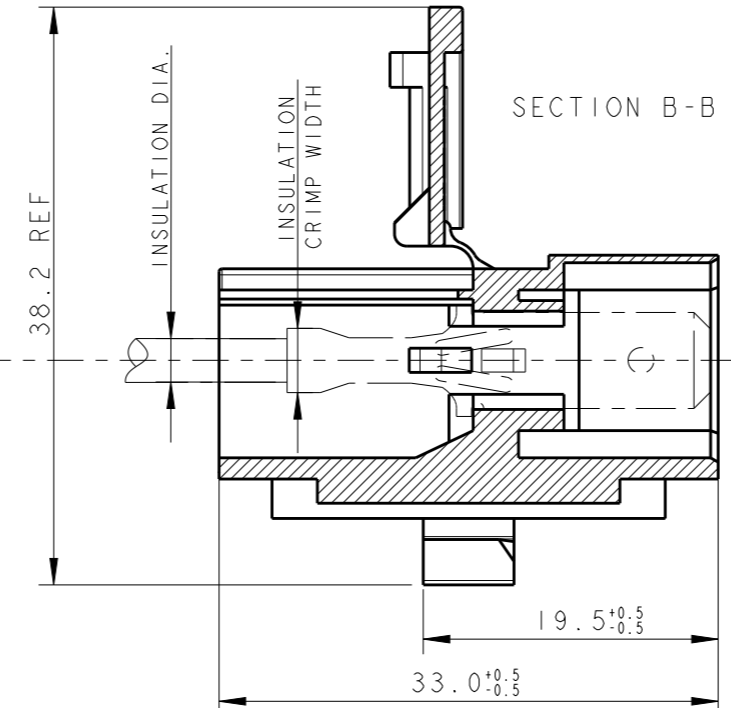
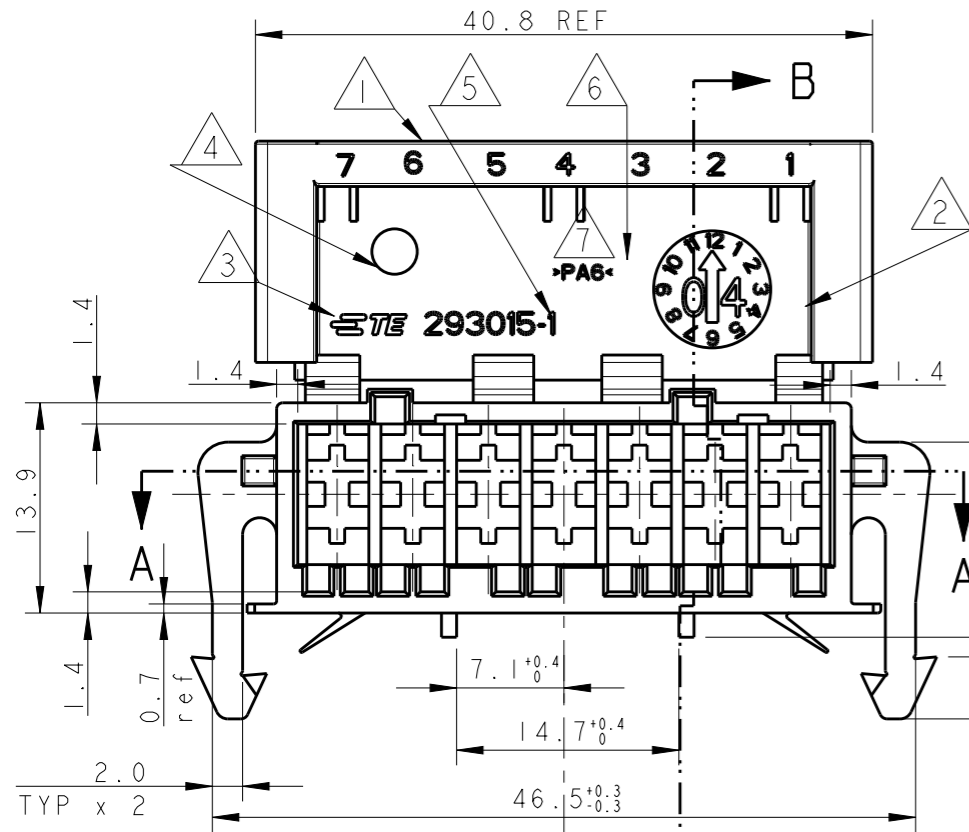
Address: A1208, Overseas Decoration Building, #122 Zhenhua RD., Futian, Shenzhen, China



THIS DRAWING IS UNPUBLISHED. RELEASED FOR PUBLICATION 2003
 © COPYRIGHT 2003 BY TYCO ELECTRONICS CORPORATION. ALL RIGHTS RESERVED.

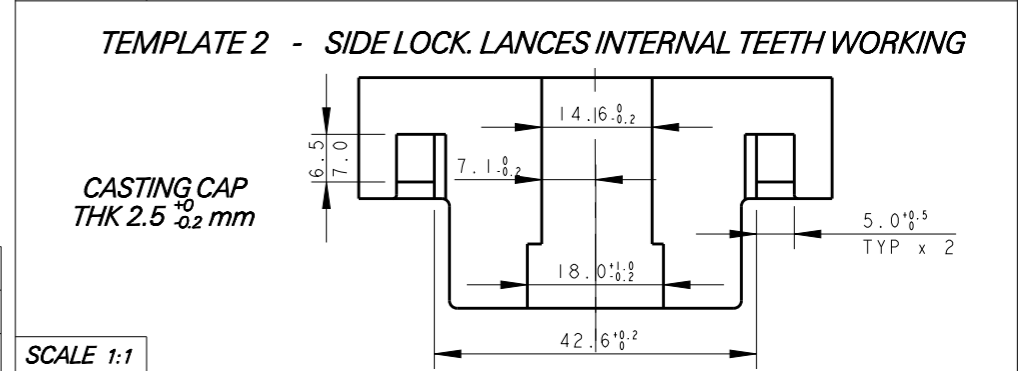
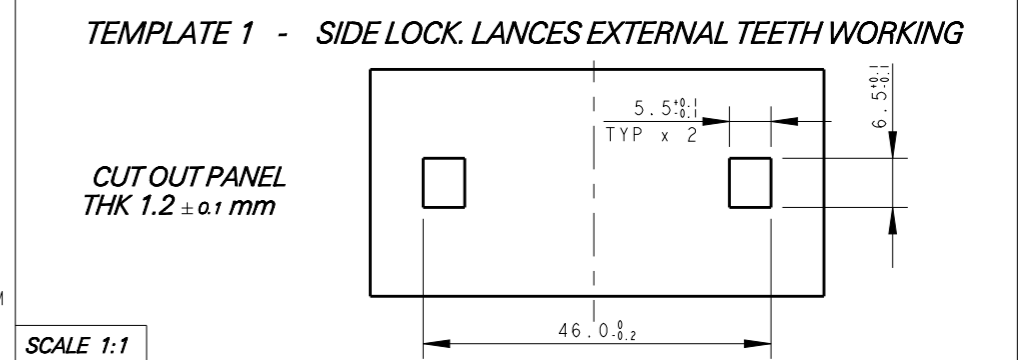
LOC	DIST
1	-

REVISIONS					
P	LTR	DESCRIPTION	DATE	DWN	APVD
C		ADDED RIB, ECR-07-02275	05FEB2008	HY	GT
C1		ECR-16-008957	21JUN2016	KD	RR
C2		ECR-16-010726	29JUL2016	KD	RR
C3		ECR-16-012006	29AUG2016	KD	RR



- NOTES:
- ① CIRCUIT IDENTIFICATION NUMBERS 1 TO 7, BOTH SIDES
 - ② DATE CODE
 - ③ TRADEMARK
 - ④ MOULD CAVITY IDENTIFICATION
 - ⑤ TE - AMP P/N
 - ⑥ RAW MATERIAL CODE
 - ⑦ MATERIAL: PA6 UNFILLED NATURAL COLOR, ACCORDING TO IEC 60335-1 NORM
- 8) CONNECTOR HOUSING SUITABLE FOR MATING WITH:
 (PROPERLY CODED WITH RELEVANT APPLICATION MACHINE)
- AMP MONOSHAP Mark I TAB CONNECTOR, P/N 1-293004-7
 - AMP MULTIFITTING Mark I TAB CONNECTOR, P/N 0-928103-7
 - AMP MULTIFITTING Mark II TAB CONNECTOR, P/N 0-1241170-7
- 9) CAVITIES SUITABLE FOR .250" SERIES FASTIN-ON TAB CONTACT ACCORDING TO NORM "DIN 46 343"
 MAX INS. DIA.: 2.8 mm; MAX INS. CRIMP WIDTH: 3.3 mm
- 10) HOOD TYP. THK.: 1.4 mm (EXCEPT AS PER SEC. Z-Z - DETAIL -)
- ① PRELIMINARY - NOT YET PRODUCTION

REV.	Tyco P/N
C	293015-1
C	1-293015-1



P/N 293015-1 AS SHOWN

THIS DRAWING IS A CONTROLLED DOCUMENT FOR TYCO ELECTRONICS CORPORATION. IT IS SUBJECT TO CHANGE AND THE CONTROLLING ENGINEERING ORGANIZATION SHOULD BE CONTACTED FOR THE LATEST REVISION.	
DIMENSIONS: mm	TOLERANCES UNLESS OTHERWISE SPECIFIED:
0 PLC ±-	1 PLC ±0.3
1 PLC ±-	2 PLC ±-
2 PLC ±-	3 PLC ±-
3 PLC ±-	4 PLC ±-
4 PLC ±-	ANGLES ±°
MATERIAL SEE NOTE	FINISH -

DWN	U. AIME	23FEB2004
CHK	G. TURCO	23FEB2004
APVD	G. TURCO	23FEB2004
PRODUCT SPEC	108-20247	
APPLICATION SPEC	-	
WEIGHT	-	

STE TE Connectivity

NAME: 7 POSITION TAB HOUSING FOR MOTOR MOUNTING

SIZE	CAGE CODE	DRAWING NO	RESTRICTED TO
A3	00779	C-293015	-

CUSTOMER DRAWING SCALE 1:1 SHEET 1 OF 2 REV C3

4

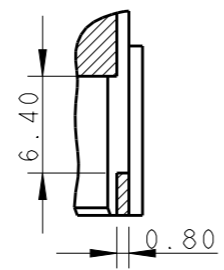
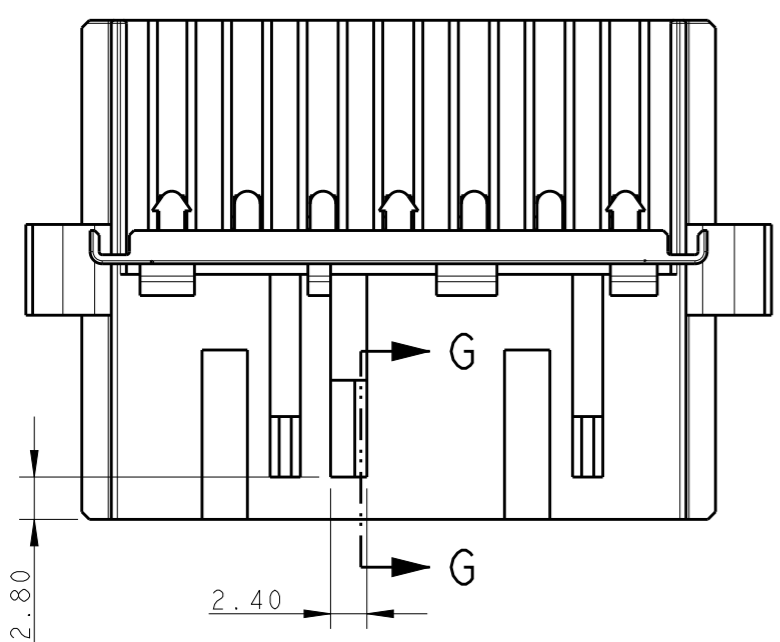
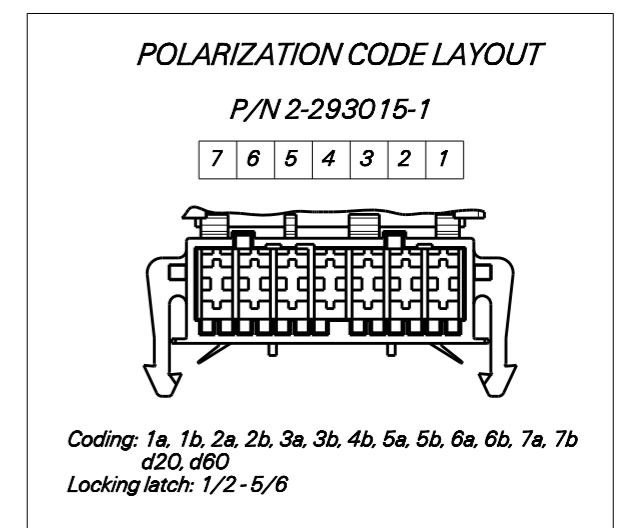
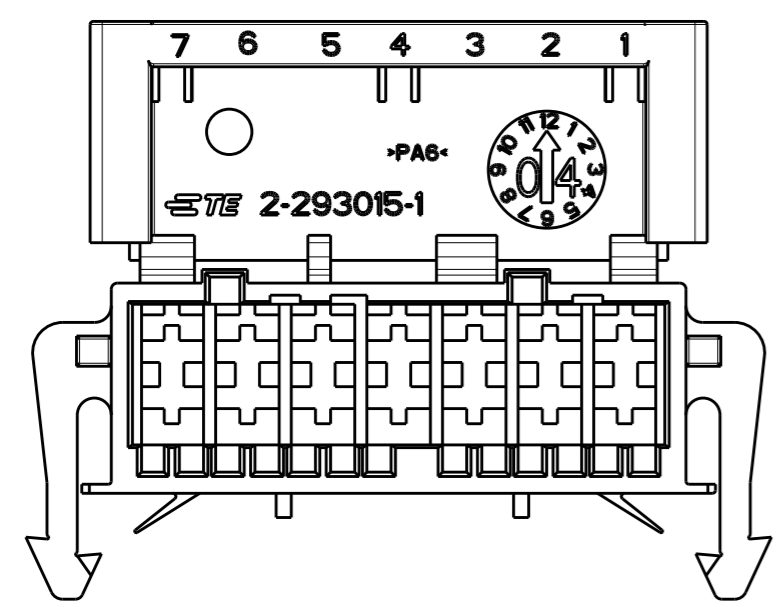
3

2

1

THIS DRAWING IS UNPUBLISHED. RELEASED FOR PUBLICATION 2003
 © COPYRIGHT 2003 BY TYCO ELECTRONICS CORPORATION. ALL RIGHTS RESERVED.

LOC	DIST	REVISIONS					
		P	LTR	DESCRIPTION	DATE	DWN	APVD
		-		SEE SHEET 1	-	-	-



SECTION G - G

P/N 2-293015-1 AS SHOWN
 ONLY FOR 2-293015-1
 OTHER DIMENSIONS NEED TO FOLLOW SHEET 1

REV.	TE P/N
C	2-293015-1

<small>THIS DRAWING IS A CONTROLLED DOCUMENT FOR TYCO ELECTRONICS CORPORATION. IT IS SUBJECT TO CHANGE AND THE CONTROLLING ENGINEERING ORGANIZATION SHOULD BE CONTACTED FOR THE LATEST REVISION.</small>		DWN U. AIME 23FEB2004 CHK G. TURCO 23FEB2004 APVD G. TURCO 23FEB2004		TE Connectivity	
DIMENSIONS: mm 		TOLERANCES UNLESS OTHERWISE SPECIFIED: 0 PLC ±- 1 PLC ±0.3 2 PLC ±- 3 PLC ±- 4 PLC ±- ANGLES ±1°			
MATERIAL SEE NOTE 		FINISH - WEIGHT -		SIZE A3 CAGE CODE 00779 DRAWING NO. C-293015 RESTRICTED TO -	
CUSTOMER DRAWING				SCALE 2:1 SHEET 2 OF 2 REV C3	