



Chipsmall Limited consists of a professional team with an average of over 10 year of expertise in the distribution of electronic components. Based in Hongkong, we have already established firm and mutual-benefit business relationships with customers from,Europe,America and south Asia,supplying obsolete and hard-to-find components to meet their specific needs.

With the principle of “Quality Parts,Customers Priority,Honest Operation,and Considerate Service”,our business mainly focus on the distribution of electronic components. Line cards we deal with include Microchip,ALPS,ROHM,Xilinx,Pulse,ON,Everlight and Freescale. Main products comprise IC,Modules,Potentiometer,IC Socket,Relay,Connector.Our parts cover such applications as commercial,industrial, and automotives areas.

We are looking forward to setting up business relationship with you and hope to provide you with the best service and solution. Let us make a better world for our industry!



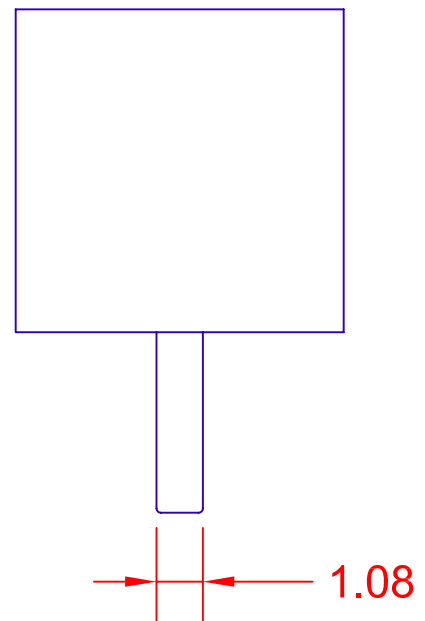
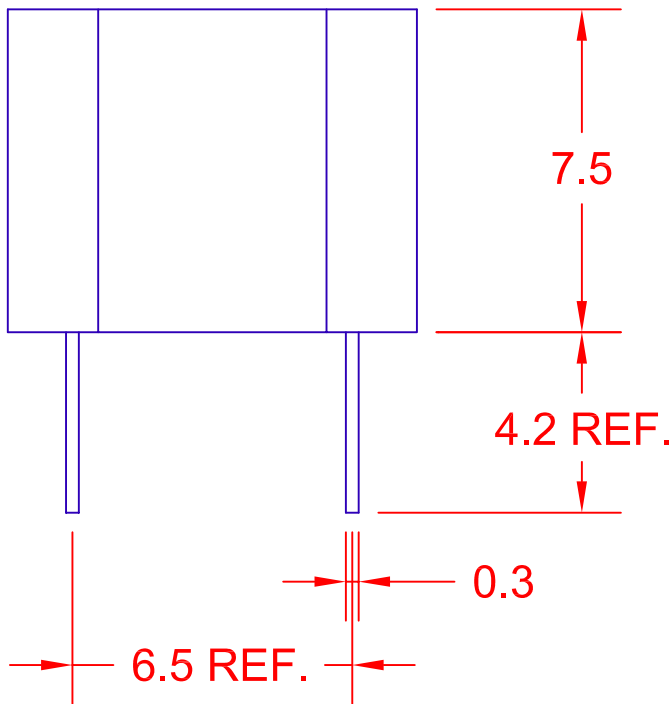
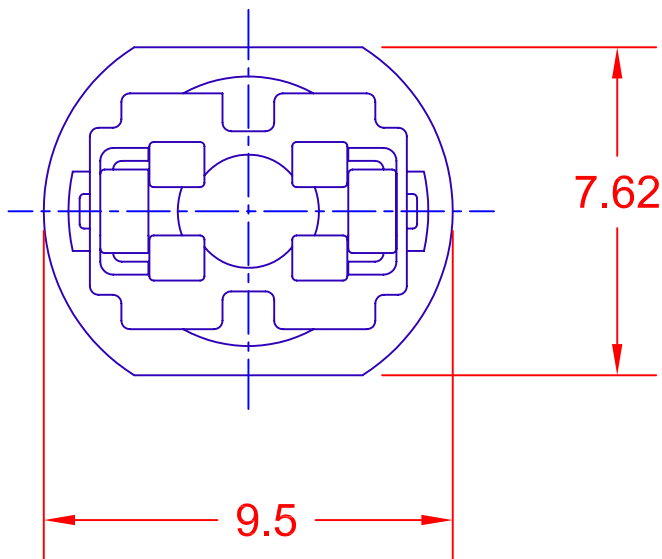
## Contact us

Tel: +86-755-8981 8866 Fax: +86-755-8427 6832

Email & Skype: info@chipsmall.com Web: www.chipsmall.com

Address: A1208, Overseas Decoration Building, #122 Zhenhua RD., Futian, Shenzhen, China





JKL PART NO.: 2936

SOCKET COLOR: BLACK

				<b>METRIC</b> DIMENSIONS ARE IN MILLIMETERS TOLERANCE UNLESS OTHERWISE SPECIFIED 0.50 - 12.70 ± 0.127 12.70 - 50.80 ± 0.254		<b>JKL COMPONENTS CORPORATION</b>				
THIRD ANGLE PROJECTION		- CAD DRAWING - MANUAL REVISIONS NOT PERMITTED		TITLE <b>T-1 3/4 SOCKET BASE</b>		SIZE <b>A</b> FSCM NO. <b>55335</b> DRAWING NO. <b>SOCKET 2936</b>				
REV. NO.	DESCRIPTION/ECO NUMBER	APPV'D DATE	DRAWN BY L. WENGSTROM	APPV'D BY E.D.	DATE 12/13/05	SCALE NONE	RELEASED DATE 2/18/02	REVISION DATE 12/13/05	REV. NO. <b>A</b>	SHEET 1 OF 1
A	CHANGE 6.5 DIM TO 6.5 REF.	12/13/05								
	RELEASE TO CAD	2/18/02								

REV. NO.	DESCRIPTION/ECO NUMBER	APPV'D DATE
A	CHANGE 6.5 DIM TO 6.5 REF.	12/13/05
	RELEASE TO CAD	2/18/02