



Chipsmall Limited consists of a professional team with an average of over 10 year of expertise in the distribution of electronic components. Based in Hongkong, we have already established firm and mutual-benefit business relationships with customers from,Europe,America and south Asia,supplying obsolete and hard-to-find components to meet their specific needs.

With the principle of “Quality Parts,Customers Priority,Honest Operation,and Considerate Service”,our business mainly focus on the distribution of electronic components. Line cards we deal with include Microchip,ALPS,ROHM,Xilinx,Pulse,ON,Everlight and Freescale. Main products comprise IC,Modules,Potentiometer,IC Socket,Relay,Connector.Our parts cover such applications as commercial,industrial, and automotives areas.

We are looking forward to setting up business relationship with you and hope to provide you with the best service and solution. Let us make a better world for our industry!



Contact us

Tel: +86-755-8981 8866 Fax: +86-755-8427 6832

Email & Skype: info@chipsmall.com Web: www.chipsmall.com

Address: A1208, Overseas Decoration Building, #122 Zhenhua RD., Futian, Shenzhen, China



Electronic housing - CM175-LG/H 35/BO/DB/GH BK - 2941507

Please be informed that the data shown in this PDF Document is generated from our Online Catalog. Please find the complete data in the user's documentation. Our General Terms of Use for Downloads are valid (<http://phoenixcontact.com/download>)



Electronic module, for PCB insertion, with a 35 mm tall covering hood

Product Features

- ✓ Flexible accommodation of different connection elements (from high-position connectors to electronic PCBs)
- ✓ Rugged housing technology
- ✓ Easy snap-on mounting on symmetrical DIN rails according to EN 60715
- ✓ Shock and contamination-proof accommodation of electronic components



Key commercial data

Packing unit	1 pc
GTIN	 4 017918 080471
Weight per Piece (excluding packing)	665.4 GRM
Custom tariff number	85369010
Country of origin	Germany

Technical data

General

Housing type	Complete housing
Housing material	Polycarbonate fiber reinforced
Color	black

Ambient conditions

Ambient temperature (operation)	-40 °C ... 125 °C
---------------------------------	-------------------

Dimensions

Length	125 mm
--------	--------

Electronic housing - CM175-LG/H 35/BO/DB/GH BK - 2941507

Technical data

Dimensions

Constructional height	155 mm
Width	175 mm

Technical data

Inflammability class according to UL 94	V0
Power dissipation at 20°C in the horizontal mounting position	120 W 160 W

Classifications

eCl@ss

eCl@ss 4.0	27180401
eCl@ss 4.1	27180401
eCl@ss 5.0	27180506
eCl@ss 5.1	27180506
eCl@ss 6.0	27180802
eCl@ss 7.0	27182702
eCl@ss 8.0	27182702

ETIM

ETIM 2.0	EC001031
ETIM 3.0	EC001031
ETIM 4.0	EC001031
ETIM 5.0	EC001031

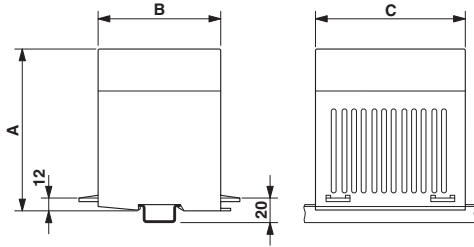
UNSPSC

UNSPSC 6.01	31261501
UNSPSC 7.0901	31261501
UNSPSC 11	31261501
UNSPSC 12.01	31261501
UNSPSC 13.2	31261501

Drawings

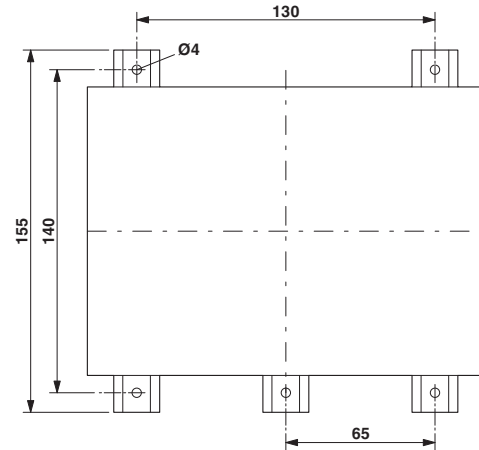
Electronic housing - CM175-LG/H 35/BO/DB/GH BK - 2941507

Dimensioned drawing

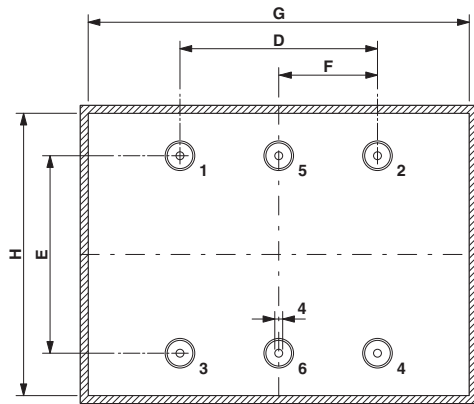


Dimension A: 155 mm; dimension B: 125 mm; dimension C: 175 mm

Dimensioned drawing

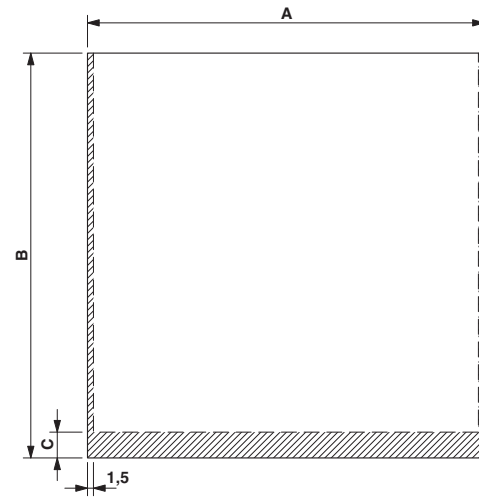


Dimensioned drawing



Dimension D: 100.0 mm; E: 80.0 mm; G: 160.0 mm; H: 112.0 mm
 Spacer pins 1 - 4: Height 25 mm; ϕ 4 mm

Dimensioned drawing



PCB 1, 7: Dimension A: 165.5 mm; B: 131.5 mm; C: 0 mm
 PCB 8, 10, 11, 13: Dimension A: 115.5 mm; B: 139.0 mm; C: 0 mm

Electronic housing - CM175-LG/H 35/BO/DB/GH BK - 2941507

Schematic diagram

