



Chipsmall Limited consists of a professional team with an average of over 10 year of expertise in the distribution of electronic components. Based in Hongkong, we have already established firm and mutual-benefit business relationships with customers from,Europe,America and south Asia,supplying obsolete and hard-to-find components to meet their specific needs.

With the principle of “Quality Parts,Customers Priority,Honest Operation,and Considerate Service”,our business mainly focus on the distribution of electronic components. Line cards we deal with include Microchip,ALPS,ROHM,Xilinx,Pulse,ON,Everlight and Freescale. Main products comprise IC,Modules,Potentiometer,IC Socket,Relay,Connector.Our parts cover such applications as commercial,industrial, and automotives areas.

We are looking forward to setting up business relationship with you and hope to provide you with the best service and solution. Let us make a better world for our industry!



## Contact us

Tel: +86-755-8981 8866 Fax: +86-755-8427 6832

Email & Skype: info@chipsmall.com Web: www.chipsmall.com

Address: A1208, Overseas Decoration Building, #122 Zhenhua RD., Futian, Shenzhen, China



## Electronic module - CM200-LG/H 55/BO/DB/GH BK - 2941853

Please be informed that the data shown in this PDF Document is generated from our Online Catalog. Please find the complete data in the user's documentation. Our General Terms of Use for Downloads are valid (<http://phoenixcontact.com/download>)




Electronic module, for PCB insertion, with a 55 mm tall covering hood

### Product Features

- ✓ Rugged housing technology
- ✓ Easy snap-on mounting on symmetrical DIN rails according to EN 60715
- ✓ Flexible accommodation of different connection elements (from high-position connectors to electronic PCBs)
- ✓ Shock and contamination-proof accommodation of electronic components



### Key commercial data

Packing unit	1 pc
GTIN	 4 017918 107703
Weight per Piece (excluding packing)	896.3 GRM
Custom tariff number	85369010
Country of origin	Germany

### Technical data

#### General

Housing type	Complete housing
Housing material	Polycarbonate fiber reinforced
Color	black

#### Ambient conditions

Ambient temperature (operation)	-40 °C ... 125 °C
---------------------------------	-------------------

#### Dimensions

Length	149 mm
--------	--------

## Electronic module - CM200-LG/H 55/BO/DB/GH BK - 2941853

### Technical data

#### Dimensions

Constructional height	165 mm
Width	200 mm

#### Technical data

Inflammability class according to UL 94	V0
Power dissipation at 20°C in the horizontal mounting position	160 W 200 W

### Classifications

#### eCl@ss

eCl@ss 4.0	27180401
eCl@ss 4.1	27180401
eCl@ss 5.0	27180506
eCl@ss 5.1	27180506
eCl@ss 6.0	27180802
eCl@ss 7.0	27182702
eCl@ss 8.0	27182702

#### ETIM

ETIM 2.0	EC001031
ETIM 3.0	EC001031
ETIM 4.0	EC001031
ETIM 5.0	EC001031

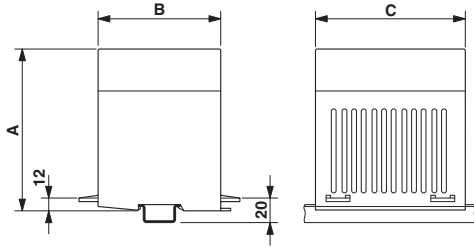
#### UNSPSC

UNSPSC 6.01	31261501
UNSPSC 7.0901	31261501
UNSPSC 11	31261501
UNSPSC 12.01	31261501
UNSPSC 13.2	31261501

### Drawings

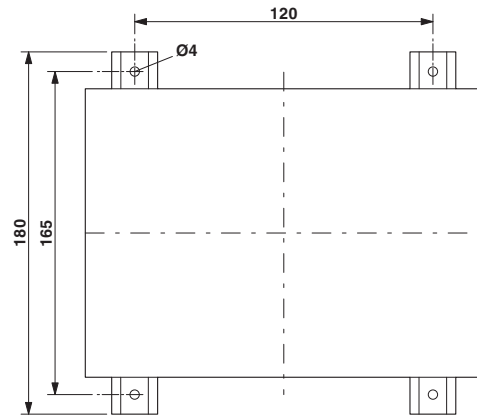
# Electronic module - CM200-LG/H 55/BO/DB/GH BK - 2941853

Dimensioned drawing

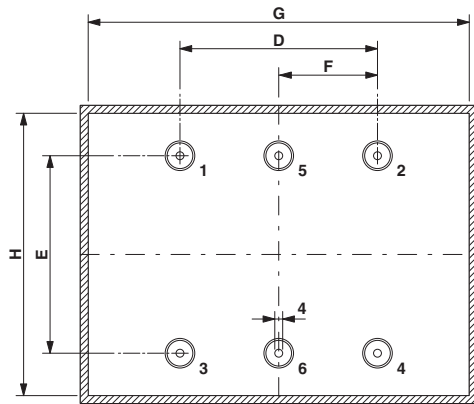


Dimension A: 165 mm; dimension B: 149 mm; dimension C: 200 mm

Dimensioned drawing

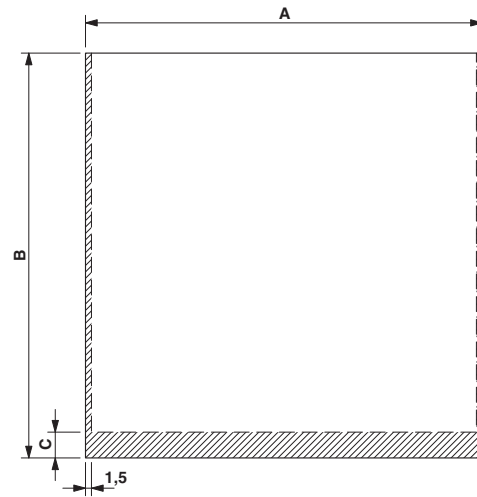


Dimensioned drawing



Dimension D: 100.0 mm; E: 100.0 mm; F: 50.0; G: 190.0 mm; H: 138.0 mm  
 Spacer pins 1 - 6: Height 20 mm;  $\phi$  4 mm

Dimensioned drawing



PCB 8, 13: Dimension A: 141.0 mm; B: 140.5 mm; C: 0 mm

# Electronic module - CM200-LG/H 55/BO/DB/GH BK - 2941853

Schematic diagram

