



Chipsmall Limited consists of a professional team with an average of over 10 year of expertise in the distribution of electronic components. Based in Hongkong, we have already established firm and mutual-benefit business relationships with customers from,Europe,America and south Asia,supplying obsolete and hard-to-find components to meet their specific needs.

With the principle of "Quality Parts,Customers Priority,Honest Operation,and Considerate Service",our business mainly focus on the distribution of electronic components. Line cards we deal with include Microchip,ALPS,ROHM,Xilinx,Pulse,ON,Everlight and Freescale. Main products comprise IC,Modules,Potentiometer,IC Socket,Relay,Connector.Our parts cover such applications as commercial,industrial, and automotives areas.

We are looking forward to setting up business relationship with you and hope to provide you with the best service and solution. Let us make a better world for our industry!



Contact us

Tel: +86-755-8981 8866 Fax: +86-755-8427 6832

Email & Skype: info@chipsmall.com Web: www.chipsmall.com

Address: A1208, Overseas Decoration Building, #122 Zhenhua RD., Futian, Shenzhen, China



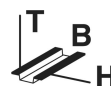
EMG 45-ELR3/1,5

Order No.: 2942739




<http://eshop.phoenixcontact.de/phoenix/treeViewClick.do?UID=2942739>

Electronic load relay, for direct driving of equipment in the 3-phase network, with light indicator and protection circuit, output: 320 V AC 440 V AC/3x 1.5 A



<http://www.download.phoenixcontact.com>
Please note that the data given here has been taken from the online catalog. For comprehensive information and data, please refer to the user documentation. The General Terms and Conditions of Use apply to Internet downloads.

Commercial data

GTIN (EAN)	 4 017918 080822
sales group	G410
Pack	5 pcs.
Customs tariff	85364900
Catalog page information	Page 173 (IF-2009)

Technical data

Input data

Input name	Control input right/left
Nominal input voltage U_N	24 V DC
Input voltage range in reference to U_N	0.8 ... 1.2
Typical input current at U_N	20 mA
Switching threshold "0" signal in reference to U_N	< 0.3
Switching threshold "1" signal in reference to U_N	> 0.8
Reaction time in normal load operation	20 ms

Transmission frequency	1 Hz (With ohmic load)
	1 Hz (At $\cos \phi = 0.5$)
Input name	Device supply
Protective circuit	Protection against polarity reversal Series polarity protection diode
	Surge protection
Status display	Yellow LED

Output data, load relay

Output name	AC output
Nominal output voltage	400 V AC
Nominal output voltage range	320 V AC ... 440 V AC
Periodic peak reverse voltage	600 V (load relay is not suitable for the construction of reversing circuits.)
Mains frequency	50 Hz
	60 Hz
Continuous load current	max. 1.5 A (see derating curve)
Leakage current	Typ. 7 mA
Residual voltage	Typ. 1 V
Surge current	100 A ($t_p = 10$ ms, at 25 °C)
Type of protection	RC element
Protective circuit/component	RC element
Type of protection	Surge protection

Connection data

Type of connection	Screw connection
Stripping length	8 mm
Conductor cross section solid min.	0.2 mm ²
Conductor cross section solid max.	4 mm ²
Conductor cross section stranded min.	0.2 mm ²
Conductor cross section stranded max.	2.5 mm ²
Conductor cross section AWG/kcmil min.	24
Conductor cross section AWG/kcmil max	12
Screw thread	M3

General data

Width	45 mm
Height	75 mm

Depth	82.5 mm
Test voltage input/output	3.5 kV
Ambient temperature (operation)	-20 °C ... 55 °C
Ambient temperature (storage/transport)	-20 °C ... 70 °C
Mounting position	Vertical (horizontal DIN rail)
Assembly instructions	Can be aligned with > 20 mm spacing
Operating mode	100% operating factor
Degree of protection	IP20
Name	Air and creepage distances between the power circuits
Standards/regulations	EN 50178
	Basic insulation
Name	Power station requirements
	EMC regulations
Standards/regulations	EN 61000-6-2
	EN 61000-6-4

Certificates / Approvals

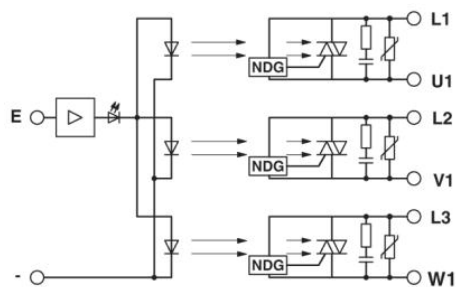


Certification

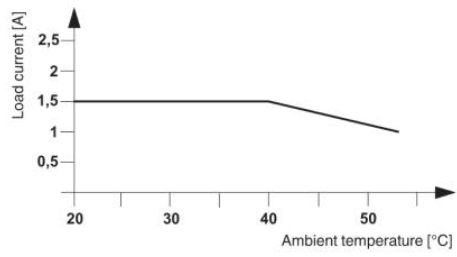
GOST

Diagrams/Drawings

Block diagram



Diagram



Address

PHOENIX CONTACT Deutschland GmbH
Flachmarktstr. 8
32825 Blomberg, Germany
Phone +49 5235 3 12000
Fax +49 5235 3 41200
<http://www.phoenixcontact.de>



© 2011 Phoenix Contact
Technical modifications reserved;