



Chipsmall Limited consists of a professional team with an average of over 10 year of expertise in the distribution of electronic components. Based in Hongkong, we have already established firm and mutual-benefit business relationships with customers from,Europe,America and south Asia,supplying obsolete and hard-to-find components to meet their specific needs.

With the principle of "Quality Parts,Customers Priority,Honest Operation,and Considerate Service",our business mainly focus on the distribution of electronic components. Line cards we deal with include Microchip,ALPS,ROHM,Xilinx,Pulse,ON,Everlight and Freescale. Main products comprise IC,Modules,Potentiometer,IC Socket,Relay,Connector.Our parts cover such applications as commercial,industrial, and automotives areas.

We are looking forward to setting up business relationship with you and hope to provide you with the best service and solution. Let us make a better world for our industry!



## Contact us

Tel: +86-755-8981 8866 Fax: +86-755-8427 6832

Email & Skype: info@chipsmall.com Web: www.chipsmall.com

Address: A1208, Overseas Decoration Building, #122 Zhenhua RD., Futian, Shenzhen, China



## ► General data



Power supply unit, common-mode, input 120 V AC, output 2 x 12 V DC/1 A

Order number	2943796
Type	CM 90-PS-120AC/ 2X12DC/1

Barcode number	4017918081348
Unit pack	1 Pcs.
Customs tariff	85044094000

## ► Technical data

### Input data

Nominal input voltage	120 V AC +6 % -10 %
Frequency range	50 Hz ... 60 Hz
Nominal power consumption	65 VA
Input fuse	Thermal release fuse

### Output data

Nominal output voltage	$\pm 12 \text{ V DC } \pm 4 \%$
Output current	1 A (2 x)
Residual ripple	< 30 mV <sub>ss</sub>
Output fuse	IEC 127-2/EN 60 127-2 (2 x)
Protective circuit/component	Damping diode, varistor

---

### General data

Width	90 mm
Height	146 mm
Depth	75 mm
Weight	1.5 kg
Operating mode	100% operating factor
Test voltage input/output	4 kV AC
Degree of protection	IP 20
Ambient temperature (operation)	0 °C ... 60 °C
Installation position	On horizontal DIN rail, venting slits above and below
Assembly instructions	Can be aligned with spacing = 10 mm
Standards/regulations	IEC 664/IEC 664 A/DIN VDE 0110-1:1989-01
Standards/regulations	DIN VDE 0551

---

### Connection data, input

Screw thread	M 2,5
Stripping length	8 mm
Type of connection	Screw connection
Min. conductor cross section AWG/kcmil	24
Conductor cross section AWG/kcmil max	14
Min. conductor cross section, rigid	0.2 mm <sup>2</sup>
Conductor cross section, rigid max.	2.5 mm <sup>2</sup>
Conductor cross section flexible min.	0.2 mm <sup>2</sup>
Max. conductor cross section, flexible	2.5 mm <sup>2</sup>

---

### Connection data, output

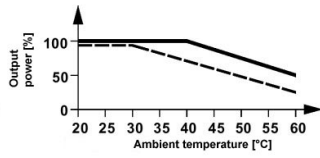
Stripping length	8 mm
Type of connection	Screw connection
Min. conductor cross section AWG/kcmil	24
Conductor cross section AWG/kcmil max	14
Min. conductor cross section, rigid	0.2 mm <sup>2</sup>
Conductor cross section, rigid max.	2.5 mm <sup>2</sup>
Conductor cross section flexible min.	0.2 mm <sup>2</sup>
Max. conductor cross section, flexible	2.5 mm <sup>2</sup>

---

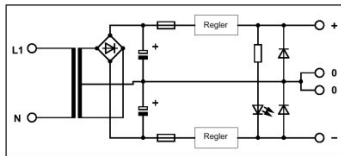
## ▸ Drawings

---

### Diagram



### Circuit diagram



## ► Address

---

Phoenix Contact GmbH & Co. KG  
Flachsmarktstr. 8  
32825 Blomberg  
Germany  
Tel + 49 - (0) 52 35 - 3-00  
Fax + 49 - (0) 52 35 - 3-4 12 00  
[www.phoenixcontact.com](http://www.phoenixcontact.com)

© Phoenix Contact  
Technical modifications reserved