



Chipsmall Limited consists of a professional team with an average of over 10 year of expertise in the distribution of electronic components. Based in Hongkong, we have already established firm and mutual-benefit business relationships with customers from,Europe,America and south Asia,supplying obsolete and hard-to-find components to meet their specific needs.

With the principle of “Quality Parts,Customers Priority,Honest Operation,and Considerate Service”,our business mainly focus on the distribution of electronic components. Line cards we deal with include Microchip,ALPS,ROHM,Xilinx,Pulse,ON,Everlight and Freescale. Main products comprise IC,Modules,Potentiometer,IC Socket,Relay,Connector.Our parts cover such applications as commercial,industrial, and automotives areas.

We are looking forward to setting up business relationship with you and hope to provide you with the best service and solution. Let us make a better world for our industry!



Contact us

Tel: +86-755-8981 8866 Fax: +86-755-8427 6832

Email & Skype: info@chipsmall.com Web: www.chipsmall.com

Address: A1208, Overseas Decoration Building, #122 Zhenhua RD., Futian, Shenzhen, China



► General data



Power supply unit, common-mode, input 120 V AC, output 2 x 15 V DC/1 A

Order number
Type

2943819
CM 90-PS-120AC/ 2X15DC/1

Barcode number
Unit pack
Customs tariff

4017918081362
1 Pcs.
85044094000

► Technical data

Input data

Nominal input voltage	120 V AC +6 % -10 %
Frequency range	50 Hz ... 60 Hz
Nominal power consumption	Approx. 75 VA
Input fuse	Thermal release fuse

Output data

Nominal output voltage	± 15 V DC ±4%
Output current	1 A (2 x)
Residual ripple	< 30 mVss
Output fuse	IEC 127-2/EN 60 127-2 (2 x)
Protective circuit/component	Damping diode, varistor

General data

Width	90 mm
Height	146 mm
Depth	75 mm
Weight	1.5 kg
Operating voltage display	LED
Operating mode	100% operating factor
Test voltage input/output	4 kV AC
Degree of protection	IP 20
Ambient temperature (operation)	0 °C ... 60 °C
Installation position	On horizontal DIN rail, venting slits above and below
Assembly instructions	Can be aligned with spacing = 10 mm
Standards/regulations	IEC 664/IEC 664A/DIN VDE 0110-1:1989-01
Standards/regulations	DIN VDE 0551, UL 1012

Connection data, input

Screw thread	M 2,5
Stripping length	8 mm
Type of connection	Screw connection
Min. conductor cross section AWG/kcmil	24
Conductor cross section AWG/kcmil max	14
Min. conductor cross section, rigid	0.2 mm ²
Conductor cross section, rigid max.	2.5 mm ²
Conductor cross section flexible min.	0.2 mm ²
Max. conductor cross section, flexible	2.5 mm ²

Connection data, output

Stripping length	8 mm
Type of connection	Screw connection
Min. conductor cross section AWG/kcmil	24
Conductor cross section AWG/kcmil max	14
Min. conductor cross section, rigid	0.2 mm ²
Conductor cross section, rigid max.	2.5 mm ²
Conductor cross section flexible min.	0.2 mm ²
Max. conductor cross section, flexible	2.5 mm ²

► Certificates

CSA

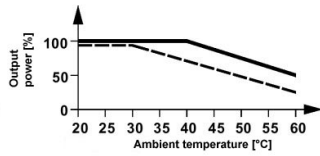
Comments	Output
AWG/kcmil	24-12

UL

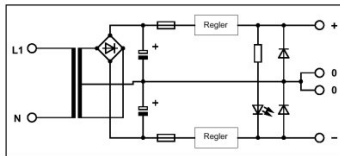
Nominal voltage U_N	15 V
Nominal current I_N	1 A
AWG/kcmil	24-12

► Drawings

Diagram



Circuit diagram



Approval logo



► Address

Phoenix Contact GmbH & Co. KG
Flachsmarktstr. 8
32825 Blomberg
Germany
Tel + 49 - (0) 52 35 - 3-00
Fax + 49 - (0) 52 35 - 3-4 12 00
www.phoenixcontact.com

© Phoenix Contact
Technical modifications reserved