



Chipsmall Limited consists of a professional team with an average of over 10 year of expertise in the distribution of electronic components. Based in Hongkong, we have already established firm and mutual-benefit business relationships with customers from,Europe,America and south Asia,supplying obsolete and hard-to-find components to meet their specific needs.

With the principle of “Quality Parts,Customers Priority,Honest Operation,and Considerate Service”,our business mainly focus on the distribution of electronic components. Line cards we deal with include Microchip,ALPS,ROHM,Xilinx,Pulse,ON,Everlight and Freescale. Main products comprise IC,Modules,Potentiometer,IC Socket,Relay,Connector.Our parts cover such applications as commercial,industrial, and automotives areas.

We are looking forward to setting up business relationship with you and hope to provide you with the best service and solution. Let us make a better world for our industry!



## Contact us

Tel: +86-755-8981 8866 Fax: +86-755-8427 6832

Email & Skype: info@chipsmall.com Web: www.chipsmall.com

Address: A1208, Overseas Decoration Building, #122 Zhenhua RD., Futian, Shenzhen, China



# EMG 17-OV-120AC/240AC/3

Order No.: 2954277

The illustration shows version EMG 17-OV, with AC voltage output, max. 3 A



<http://eshop.phoenixcontact.de/phoenix/treeViewClick.do?UID=2954277>

Power optocoupler, with light indicator and protection circuits in the input and output circuits, input: 120 V AC, output: 48-280 V AC/ max. 3 A



## Commercial data

|                          |  |
|--------------------------|--|
| GTIN (EAN)               | <br>4 017918 084936 |
| Note                     | Made-to-order  |
| sales group              | G112   |
| Pack                     | 10 pcs.  |
| Customs tariff           | 85364900   |
| Catalog page information | Page 131 (IF-2009)   |

## Product notes

WEEE/RoHS-compliant since:  
08/10/2006



<http://www.download.phoenixcontact.com>  
Please note that the data given here has been taken from the online catalog. For comprehensive information and data, please refer to the user documentation. The General Terms and Conditions of Use apply to Internet downloads.

## Technical data

### Input data

|  |             |
|--|-------------|
| Nominal input voltage $U_N$                          | 120 V AC    |
| Input voltage range in reference to $U_N$            | 0.8 ... 1.2 |
| Switching threshold "0" signal in reference to $U_N$ | $\leq 0.4$  |

|  |                                      |
|--|--------------------------------------|
| Switching threshold "1" signal in reference to $U_N$ | $\geq 0.8$                           |
| Typical input current at $U_N$                       | 3.2 mA                               |
| Typical response time                                | 10 ms                                |
| Typical turn-off time                                | 10 ms                                |
| Operating voltage display                            | Yellow LED                           |
| Type of protection                                   | Protection against polarity reversal |
|  | Surge protection                     |
| Protective circuit/component                         | Polarity protection diode            |
|  | Varistor                             |
| Transmission frequency                               | 10 Hz                                |

#### Output data

|  |   |
|--|---|
| Output nominal voltage                           | 240 V AC  |
| Output nominal voltage range                     | 48 V AC ... 280 V AC (50 Hz ... 60 Hz)                    |
| Limiting continuous current                      | 3 A (see derating curve)                                  |
| Min. load current                                | 50 mA   |
| Leakage current                                  | 4 mA (in off state)                                       |
| Surge current                                    | 160 A (t = 10 ms)   |
| Max. load value                                  | 128 A <sup>2</sup> s (I <sup>2</sup> x t where t = 10 ms) |
| Peak offstate voltage                            | 600 V (Periodic peak reverse voltage)                     |
| Voltage drop at max. limiting continuous current | $\leq 1$ V  |
| Output circuit                                   | 2-wire, floating  |
| Type of protection                               | RC element  |
|  | Surge protection  |
| Protective circuit/component                     | RC element  |
|  | Varistor  |

#### Connection data

|  |                     |
|--|---------------------|
| Type of connection                     | Screw connection    |
| Stripping length                       | 8 mm                |
| Screw thread                           | M3                  |
| Conductor cross section solid min.     | 0.2 mm <sup>2</sup> |
| Conductor cross section solid max.     | 4 mm <sup>2</sup>   |
| Conductor cross section stranded min.  | 0.2 mm <sup>2</sup> |
| Conductor cross section stranded max.  | 2.5 mm <sup>2</sup> |
| Conductor cross section AWG/kcmil min. | 24                  |
| Conductor cross section AWG/kcmil max  | 12                  |

#### General data

|   |                           |
|---|---------------------------|
| Width   | 17.5 mm                   |
| Height  | 75 mm                     |
| Depth   | 102 mm                    |
| Test voltage input/output                         | 3.5 kV AC                 |
| Ambient temperature (operation)                   | -20 °C ... 60 °C          |
| Ambient temperature (storage/transport)           | -20 °C ... 70 °C          |
| Mounting position                                 | Horizontal                |
| Assembly instructions                             | In rows with zero spacing |
| Operating mode                                    | 100% operating factor     |
| Degree of protection                              | IP20                      |
| Inflammability class in acc. with UL 94 (housing) | V0                        |
| Standards/regulations                             | IEC 60664                 |
|   | EN 50178                  |
|   | IEC 62103                 |
| Rated surge voltage / insulation                  | Basic insulation          |
| Pollution degree                                  | 2                         |
| Surge voltage category                            | III                       |

#### Certificates / Approvals



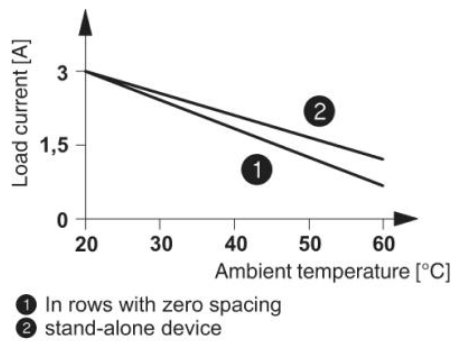
Certification

GOST

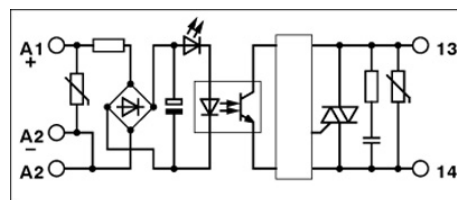
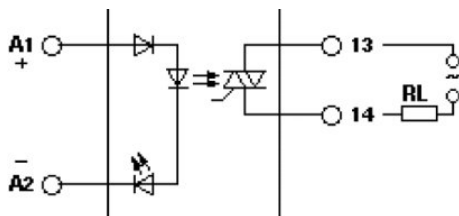


## Diagrams/Drawings

### Diagram



### Circuit diagram



**Address**

PHOENIX CONTACT Deutschland GmbH  
Flachmarktstr. 8  
32825 Blomberg, Germany  
Phone +49 5235 3 12000  
Fax +49 5235 3 41200  
<http://www.phoenixcontact.de>



© 2011 Phoenix Contact  
Technical modifications reserved;