



Chipsmall Limited consists of a professional team with an average of over 10 year of expertise in the distribution of electronic components. Based in Hongkong, we have already established firm and mutual-benefit business relationships with customers from,Europe,America and south Asia,supplying obsolete and hard-to-find components to meet their specific needs.

With the principle of “Quality Parts,Customers Priority,Honest Operation,and Considerate Service”,our business mainly focus on the distribution of electronic components. Line cards we deal with include Microchip,ALPS,ROHM,Xilinx,Pulse,ON,Everlight and Freescale. Main products comprise IC,Modules,Potentiometer,IC Socket,Relay,Connector.Our parts cover such applications as commercial,industrial, and automotives areas.

We are looking forward to setting up business relationship with you and hope to provide you with the best service and solution. Let us make a better world for our industry!



Contact us

Tel: +86-755-8981 8866 Fax: +86-755-8427 6832

Email & Skype: info@chipsmall.com Web: www.chipsmall.com

Address: A1208, Overseas Decoration Building, #122 Zhenhua RD., Futian, Shenzhen, China



ELR-CONF-WIN-2.0

Configuration Software



Data Sheet

01/2005

Features

ELR-CONF-WIN 2.0 software is used for the "parameterization" and "visualization" of electronic modules with motor management.

The software can be used to enter all parameters via the keyboard or graphically and send them to the load

relay with a click of the mouse. The software is also used to display and record operating data so that it can then be processed further in databases, for example.

The software runs under Windows 9x, Windows ME, Windows NT4.0, Windows 2000, and Windows XP.

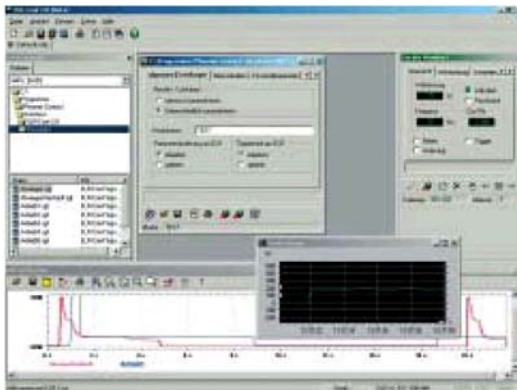


Figure 1 Configuration, monitoring, and visualization

Ordering Data

Description	Order Designation	Order No.
Configuration software for programming electronic load relays with motor management Languages: English, German	ELR-CONF-WIN-2.0	29 63 58 5
Software adapter cable	ELR-KAD-RS232	29 63 65 3



Make sure you always use the latest documentation.
It can be downloaded from www.download.phoenixcontact.com.

PHOENIX CONTACT GmbH & Co. KG
Flachmarktstr. 8
32825 Blomberg
Germany



+49 - 52 35 - 30 0



+49 - 52 35 - 34 12 00



www.phoenixcontact.com



Worldwide Locations:

www.phoenixcontact.com/salesnetwork