



Chipsmall Limited consists of a professional team with an average of over 10 year of expertise in the distribution of electronic components. Based in Hongkong, we have already established firm and mutual-benefit business relationships with customers from,Europe,America and south Asia,supplying obsolete and hard-to-find components to meet their specific needs.

With the principle of “Quality Parts,Customers Priority,Honest Operation,and Considerate Service”,our business mainly focus on the distribution of electronic components. Line cards we deal with include Microchip,ALPS,ROHM,Xilinx,Pulse,ON,Everlight and Freescale. Main products comprise IC,Modules,Potentiometer,IC Socket,Relay,Connector.Our parts cover such applications as commercial,industrial, and automotives areas.

We are looking forward to setting up business relationship with you and hope to provide you with the best service and solution. Let us make a better world for our industry!



Contact us

Tel: +86-755-8981 8866 Fax: +86-755-8427 6832

Email & Skype: info@chipsmall.com Web: www.chipsmall.com

Address: A1208, Overseas Decoration Building, #122 Zhenhua RD., Futian, Shenzhen, China

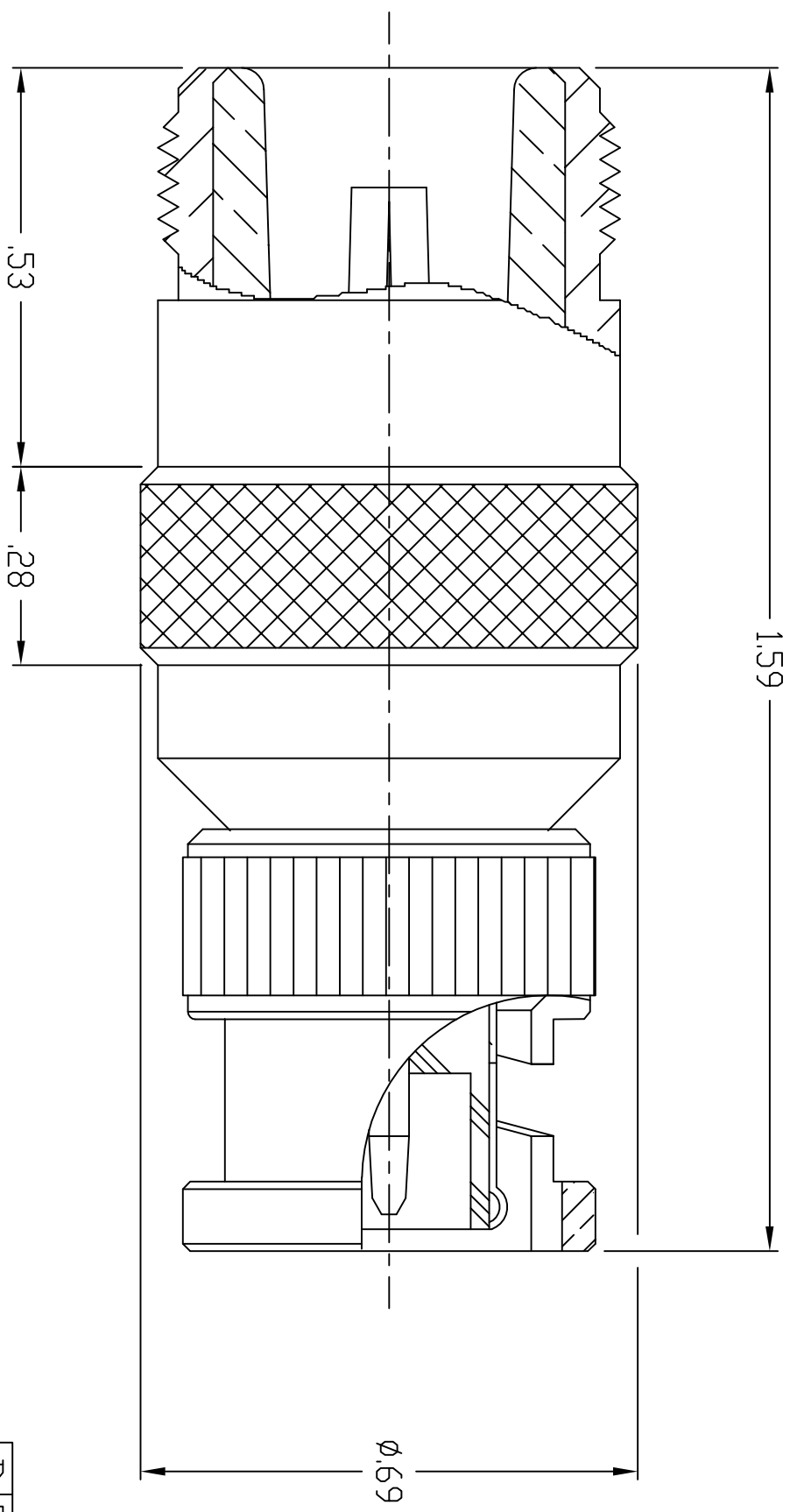


DWG. NO.
29JP158

THIS DRAWING IS A CONTROLLED DOCUMENT FOR SOURIAU CONNECTION TECHNOLOGY. IT IS SUBJECT TO CHANGE AND THE CONTROLLING DOCUMENT CONTROL CENTER SHOULD BE CONTACTED FOR THE LATEST REVISION.

THIS INFORMATION IS CONFIDENTIAL AND DISCLOSED TO YOU ON CONDITION THAT NO FURTHER DISCLOSURE IS MADE BY YOU TO OTHER THEN SOURIAU PERSONNEL WITHOUT WRITTEN AUTHORIZATION FROM SOURIAU CONNECTION TECHNOLOGY, YORK, PA.

| MATERIAL & FINISH | | ELECTRICAL CHARACTERISTICS | |
|-------------------|---|-----------------------------|--------------|
| MATERIAL: | BODY: STAINLESS STEEL PER ASTM B 582 CENTER CONTACT: BERYLLIUM COPPER PER ASTM B 196 DUTER CONTACT: BERYLLIUM COPPER PER ASTM B 196 INSULATOR: PTFE FLUOROCARBON PER ASTM-1710 | IMPEDANCE: | 50 OHMS |
| FINISH: | BODY: PASSIVATED PER SAE AMS-QQ-P-35 CENTER CONTACT: GOLD PER ASTM B 488, 100 UIN MIN. DUTER CONTACT: NICKEL (IP23) PER QQ-N-290, 200 UIN MIN. | FREQUENCY RANGE: | DC TO 4 GHZ |
| | | DIELECTRIC WITHSTANDING: | 1500 VRMS |
| | | INSULATION RESISTANCE: | 5000 MEGOHMS |
| | | WORKING VOLTAGE: | 500 VRMS |
| | | INTERFACE PER MIL-PRF-39012 | |



| | |
|---------------------------------------|------------------|
| LINEAR MEASURE: | (INCH) INCH [mm] |
| THIRD ANGLE PROJECTION | |
| TOLERANCES UNLESS OTHERWISE SPECIFIED | |
| No. OF PLACES | INCH [mm] |
| ONE PLACE | ±.1 [-.3] |
| TWO PLACES | ±0.02 [-.5] |
| THREE PLACES | ±0.010 [-.25] |
| ANGLES 1° | |

DRAWING TITLE
"N" JACK TO BNC PLUG ADAPTER
CAT. NO. 29JP158-1

| REV | DESCRIPTION | BY DATE | CHKD DATE |
|-----|---------------------------|-----------|------------|
| B | REDRAWN ON SOURIAU FORMAT | DS 8-5-05 | REL 8-5-05 |

CAGE NO: 09922
SIZE: B

CUSTOMER

INTERPRET THIS DRAWING IN ACCORDANCE WITH ASME Y14.5M - 1994

APPROVAL

| | | |
|--------|----|--------|
| DRAWN: | DS | 8-5-05 |
| CHKD: | RL | 8-5-05 |
| DSSN: | RL | 8-5-05 |
| MFG: | | |
| QC: | | |

DRAWING SCALE: N/A
DRAWING NO. 29JP158
REV B



2

1

2

1

A

B