



Chipsmall Limited consists of a professional team with an average of over 10 year of expertise in the distribution of electronic components. Based in Hongkong, we have already established firm and mutual-benefit business relationships with customers from,Europe,America and south Asia,supplying obsolete and hard-to-find components to meet their specific needs.

With the principle of “Quality Parts,Customers Priority,Honest Operation,and Considerate Service”,our business mainly focus on the distribution of electronic components. Line cards we deal with include Microchip,ALPS,ROHM,Xilinx,Pulse,ON,Everlight and Freescale. Main products comprise IC,Modules,Potentiometer,IC Socket,Relay,Connector.Our parts cover such applications as commercial,industrial, and automotives areas.

We are looking forward to setting up business relationship with you and hope to provide you with the best service and solution. Let us make a better world for our industry!



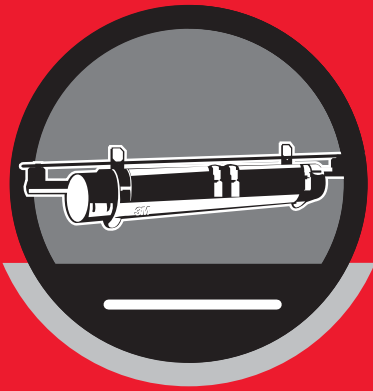
Contact us

Tel: +86-755-8981 8866 Fax: +86-755-8427 6832

Email & Skype: info@chipsmall.com Web: www.chipsmall.com

Address: A1208, Overseas Decoration Building, #122 Zhenhua RD., Futian, Shenzhen, China





3M

Closures

SLiC™ Aerial Closures and Terminals	118-122
GATM Series Closures	123-125
GATM Series Closure Accessories	126-127
Dome Closures	128-130
Foam-Sealed Closures	131-132
Better Buried Closures	133-137
Scotchcast™ Closures 89 Series	138-141
2-Type PEAK (Pressure Encapsulated Apparatus Kit)	142-143
2-Type Pressurized Closures	144-153
4-Type Fire Retardant Closures	154-162
Accessories and Replacement Parts	163-167
Tools	168
Z Watertight Closure System	169-170
Pressurized Closures 50/51P Series	171
Tools, Accessories and Replacement Parts	172
K&B Vault and Riser Closures	173-184
Network Accessories	185-188
Specialty Tapes	189-193
Lettering Kits and Replenishment Decals	194-197
Miscellaneous Accessories	198-199
Shield Bonding Products	200-201
Sheath Repair Products	202
Adhesive and Magnetic Mounting Plates	203
Holding and Fastening Products	204-206

3M™ SLiC™ Aerial Closures and Terminals

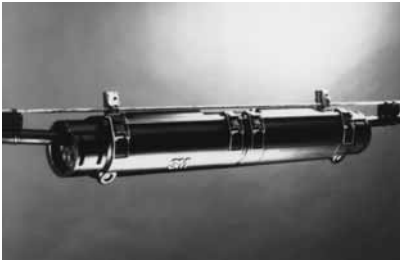
Closure Selection Guide

To order SLiC Aerial Closures and Terminals, follow these steps:

1. What is your pair count?
2. What is your cable size?
3. What is your sheath opening?
4. What type of connector are you using? Module (MS² or 710) or Discrete (Scotchlok)?
Note: Bundles built with modular connectors are half the size of discrettes.
5. What is your splice bundle diameter?

These questions should guide you in choosing the correct closure.

Floating Bond, Rigid Bond, Spiral End Seal



193

Fewer parts and easier installation with the SLiC Aerial Closure.

- Superior seal
- Easily adaptable
- Single piece design
- Double wall molded construction
- Made from durable, rugged materials
- Easy to access and reenter

The SLiC aerial closure is a single-piece aerial closure, easily installed in construction or maintenance situations. The one-piece construction permits complete splice access after placement without removal of the closure or bonding from the cables. The closures are free breathing and suitable for straight, butt, and branch splices of non-pressurized communication cables.

Splices are protected by the closure's double-wall molded polyethylene construction. The durable SLiC closure will not crack or break in even the harshest environment.



194

All components are attached to the closure; there are no parts to lose.

Because of its interlocking ends, the SLiC aerial closure can expand to meet any size sheath opening without special kits, eliminating excess inventory. The 2 x 29, 3 x 33, 5 x 33, and 7 x 33 closures can be extended while maintaining their initial strength. The SLiC aerial closure does not require taping, bricking or any special labor-intensive practices. The end seals

assure a snug fit on cables and eliminate the need for a drip collar. Sealing collars or tape are not required when using the SLiC closure.

The two-, three-, five-, seven-, and nine-inch diameter closures feature a universal end seal to handle any plant configuration. There are six sizes available, accommodating splice openings from 254 to 635 mm (10 to 25 inches).

RUS Listed



Product Referral Generator

Sheath Scuff	pg. 199
3M™ Scotchlok™ Connectors	pg. 2
Shield Bonding	pg. 200
Tapes and Sealing	pg. 189
Cable Lubricants	pg. 322
3M™ MS ² ™ Modules	pg. 6
Cable Ties	pg. 204



Features — Benefits

SLiC Aerial Closure

One piece construction	Provides easy installation; no loose parts
Double walled, molded construction	Resists breaking or cracking
Interlocking ends	Extendible for long sheath openings
Hanger/bonding system	No external or additional bonding material required
Quick release latch	Easy reentry
Attached sheath retention (SR) bracket (only for rigid bond)	Protects cable sheath pull-out or movement
Spiral end seal	One size fits multiple cable configurations

3M™ SLiC™ Aerial Closures with Floating Bond

Product Number	Contains	Packaging kg (lbs.)/cs.	Min. Order	UPC
SLiC Aerial Closure Kit with Spiral End Seal				
SLiC 2" x 19"-SES	Spiral End Seal	1/cs., 1.0 (2.3)	1 kit	054007-92600
SLiC 2" x 29"-SES	Spiral End Seal	1/cs., 1.7 (3.7)	1 kit	054007-92601
SLiC 3" x 19"-SES	Spiral End Seal	1/cs., 2.0 (4.4)	1 kit	051138-75544
SLiC 3" x 33"-SES	Spiral End Seal	1/cs., 2.4 (5.3)	1 kit	054007-92602
SLiC 5" x 33"-SES	Spiral End Seal	1/cs., 3.8 (8.3)	1 kit	054007-92603
SLiC 7" x 33"-SES	Spiral End Seal	1/cs., 5.0 (11.1)	1 kit	054007-92604
SLiC 9" x 36"-SES	Spiral End Seal	1/cs., 7.5 (16.5)	1 kit	054007-92605
SLiC Aerial Closure Kit with Rubber End Seal				
SLiC 2" x 19"	2 Double Port	1/cs., 1.1 (2.4)	1 kit	054007-71241
SLiC 2" x 29"	2 Double Port	1/cs., 1.7 (3.7)	1 kit	054007-68300
SLiC 3" x 19"	2 Triple Port	1/cs., 2.1 (4.6)	1 kit	051138-75546
SLiC 3" x 33"	2 Triple Port	1/cs., 2.4 (5.6)	1 kit	054007-68299
SLiC 5" x 33"	2 Triple Port	1/cs., 3.6 (8.0)	1 kit	054007-68298
SLiC 7" x 33"	2 Triple Port	1/cs., 4.8 (10.6)	1 kit	054007-68297
SLiC 9" x 36"	2 Triple Port	1/cs., 7.3 (16.0)	1 kit	054007-57088



195

3M SLiC Aerial Closures with Rigid Bond/Sheath Retention

Product Number	Contains	Packaging kg (lbs.)/cs.	Min. Order	UPC
Aerial Closure Kit with Spiral End Seal				
SLiC 2" x 19"-SR/SES	Spiral End Seal	1/cs., 1.1 (2.5)	1 kit	054007-92612
SLiC 2" x 29"-SR/SES	Spiral End Seal	1/cs., 1.7 (3.7)	1 kit	054007-92613
SLiC 3" x 33"-SR/SES	Spiral End Seal	1/cs., 2.6 (5.8)	1 kit	054007-92614
SLiC 5" x 33"-SR/SES	Spiral End Seal	1/cs., 3.9 (8.6)	1 kit	054007-92615
SLiC 7" x 33"-SR/SES	Spiral End Seal	1/cs., 5.1 (11.2)	1 kit	054007-92616
SLiC 9" x 36"-SR/SES	Spiral End Seal	1/cs., 7.4 (16.3)	1 kit	054007-92617



196

3M SLiC Aerial Closures with Bond Assembly attached (4462-SN)

Product Number	Contains	Packaging kg (lbs.)/cs.	Min. Order	UPC
Aerial Closure Kit with Spiral End Seal				
SLiC 2" x 19"-BA/SES	Spiral End Seal	1/cs., 4.3 (9.4)	4 kits	054007-92606
SLiC 2" x 29"-BA/SES	Spiral End Seal	1/cs., 6.5 (14.4)	4 kits	054007-92607
SLiC 3" x 19"-BA/SES	Spiral End Seal	1/cs., 7.2 (15.7)	4 kits	051138-75545
SLiC 3" x 33"-BA/SES	Spiral End Seal	1/cs., 9.1 (20.0)	4 kits	054007-92608
SLiC 5" x 33"-BA/SES	Spiral End Seal	1/cs., 3.9 (8.6)	1 kit	054007-92609
SLiC 7" x 33"-BA/SES	Spiral End Seal	1/cs., 5.0 (11)	1 kit	054007-92610
SLiC 9" x 36"-BA/SES	Spiral End Seal	1/cs., 7.6 (16.8)	1 kit	054007-92611
Aerial Closure Kit with Rubber End Seal				
SLiC 2" x 19" BA	2 Double Port	1/cs., 4.3 (9.5)	4 kits	054007-71483
SLiC 2" x 29" BA	2 Double Port	1/cs., 6.6 (14.5)	4 kits	054007-71484
SLiC 3" x 19" BA	2 Double Port	1/cs., 7.5 (16.3)	4 kits	051138-75577
SLiC 3" x 33" BA	2 Double Port	1/cs., 9.1 (20.0)	4 kits	054007-71485
SLiC 5" x 33" BA	2 Double Port	1/cs., 3.8 (8.3)	1 kit	054007-71348
SLiC 7" x 33" BA	2 Double Port	1/cs., 4.8 (10.5)	1 kit	054007-71349
SLiC 9" x 36" BA	2 Double Port	1/cs., 7.4 (16.4)	1 kit	054007-57089



197



3M™ SLiC™ Aerial Closures with Bond Assembly included (4460-S)

Product Number	Contains	Packaging kg (lbs.)/cs.	Min. Order	UPC
Aerial Closure Kit with Spiral End Seal				
SLiC 2" x 19" 4460S/SES	Spiral End Seal	1/cs., 1.1 (2.4)	1 kit	054007-92618
SLiC 2" x 29" 4460S/SES	Spiral End Seal	1/cs., 1.7 (3.8)	1 kit	054007-92619
SLiC 3" x 33" 4460S/SES	Spiral End Seal	1/cs., 2.4 (5.2)	1 kit	054007-92620
SLiC 5" x 33" 4460S/SES	Spiral End Seal	1/cs., 3.7 (8.1)	1 kit	054007-92621
SLiC 7" x 33" 4460S/SES	Spiral End Seal	1/cs., 5.0 (11.1)	1 kit	054007-92622
SLiC 9" x 36" 4460S/SES	Spiral End Seal	1/cs., 7.2 (15.9)	1 kit	054007-92623
Aerial Closure Kit with Rubber End Seal				
SLiC 2" x 19" 4460S	Double Port/Double Port	1/cs., 1.1 (2.5)	1 kit	054007-71564
SLiC 2" x 29" 4460S	Double Port/Double Port	1/cs., 1.8 (3.9)	1 kit	054007-71565
SLiC 3" x 33" 4460S	Double Port/Triple Port	1/cs., 2.4 (5.2)	1 kit	054007-71566
SLiC 5" x 33" 4460S	Double Port/Triple Port	1/cs., 3.5 (7.8)	1 kit	054007-71567
SLiC 7" x 33" 4460S	Double Port/Triple Port	1/cs., 4.8 (10.6)	1 kit	054007-71568
SLiC 9" x 36" 4460S	Double Port/Triple Port	1/cs., 7.0 (15.4)	1 kit	054007-57091



198

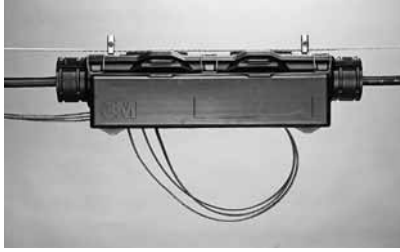
3M SLiC Aerial Closure Capabilities

	SLiC 2 x 19 mm (in.)	SLiC 2 x 29 mm (in.)	SLiC 3 x 19 mm (in.)	SLiC 3 x 33 mm (in.)	SLiC 5 x 33 mm (in.)	SLiC 7 x 33 mm (in.)	SLiC 9 x 36 mm (in.)
Max. Splice Opening	356 (14)	432 (17)	356 (14)	533 (21)	533 (21)	533 (21)	635 (25)
Max. Bundle Diameter	55.9 (2.2)	66 (2.6)	91.4 (3.6)	91.4 (3.6)	142.2 (5.6)	193.0 (7.6)	244 (9.6)
Approx. Cable Range Pair Count	100-pair (26 or 24 AWG) 0.4 or 0.5	**200-pair (26 or 24 AWG) 0.4 or 0.5	200-pair	*400-pair (26 or 24 AWG) 0.4 or 0.5	*1200-pair (26 AWG) 0.4	*2400-pair (26 AWG) 0.4	*3600-pair (26 AWG) 0.4
Spiral End Seal Port Capacity							
End Seal Dia. Port #1	20-41 (0.8-1.6)	20-41 (0.8-1.6)	20-66 (0.8-2.6)	20-66 (0.8-2.6)	30-76 (1.2-3.0)	38-97 (1.5-3.8)	38-97 (1.5-3.8)
End Seal Dia. Port #2	13-25 (0.5-1.0)	13-25 (0.5-1.0)	13-25 (0.5-1.0)	13-25 (0.5-1.0)	20-36 (0.8-1.4)	30-46 (1.2-1.8)	30-46 (1.2-1.8)
End Seal Dia. Port #3	13-25 (0.5-1.0)	13-25 (0.5-1.0)	13-25 (0.5-1.0)	13-25 (0.5-1.0)	36-51 (1.4-2.0)	13-30 (0.5-1.2)	13-30 (0.5-1.2)
End Seal Dia. Port #4	NA	NA	NA	NA	13-30 (0.5-1.2)	46-61 (1.8-2.4)	46-61 (1.8-2.4)
End Seal Dia. Port #5	NA	NA	NA	NA	NA	13-30 (0.5-1.2)	13-30 (0.5-1.2)
Rubber End Seal Port Capacity							
1 Port End Seal Dia. Port #1	5-41 (0.2-1.6)	5-41 (0.2-1.6)	5-66 (0.2-2.6)	5-66 (0.2-2.6)	NA	NA	NA
2 Port End Seal Dia. Port #1	5-25 (0.2-1.0)	5-25 (0.2-1.0)	5-51 (0.2-2.0)	5-51 (0.2-2.0)	20-56 (0.8-2.2)	41-81 (1.6-3.2)	41-81 (1.6-3.2)
2 Port End Seal Dia. Port #2	5-15 (0.2-0.6)	5-15 (0.2-0.6)	5-15 (0.2-0.6)	5-15 (0.2-0.6)	5-56 (0.2-2.2)	5-81 (0.2-3.2)	5-81 (0.2-3.2)
3 Port End Seal Dia. Port #1	NA	NA	5-41 (0.2-1.6)	5-41 (0.2-1.6)	15-56 (0.6-2.2)	36-97 (1.4-3.8)	36-97 (1.4-3.8)
3 Port End Seal Dia. Port #2	NA	NA	5-25 (0.2-1.0)	5-25 (0.2-1.0)	5-36 (0.2-1.4)	15-46 (0.6-1.8)	15-46 (0.6-1.8)
3 Port End Seal Dia. Port #3	NA	NA	5-25 (0.2-1.0)	5-25 (0.2-1.0)	5-36 (0.2-1.4)	15-46 (0.6-1.8)	15-46 (0.6-1.8)

* Based on 2-Bank Straight Splice using MS²™ 4000-DWP Module

** Based on more than one cable

3M™ SLiC™ Aerial Terminal and SLiC Aerial Terminal with Spiral End Seal



199

The 3M SLiC Aerial Terminal and the SLiC Aerial Terminal with Spiral End Seal are distribution terminals and closures contained within a lightweight, double-wall molded-plastic housing designed for fixed-count termination of aerial drop wires. Special block configurations required by the individual customer are also available and may be completed either at the factory or by the customer.

End seals of the SLiC Terminal are designed to assure proper sizing and a snug fit around the cable sheath. This

eliminates the need for drip collars to prohibit water from entering the splice chamber. The SLiC Terminal with Rubber End Seal comes packaged with single-port end seals; however, customers may use double-port or triple-port end seals as their applications require. The 7.6 cm SLiC Terminal with spiral end seal comes packaged with three port end seals. And, the 12.7 cm terminal comes packaged with four port end seals.

RUS Listed

Features — Benefits

SLiC Aerial Terminals	
Two-closure-in-one housing design	Separates splice and drop chamber
One piece construction	Eases installation
Self-healing drop wire ports	Minimizes weather and insect problems
Sleeves extend in either or both directions	Eliminates need for separate rehabilitation and distribution splices; accommodates long sheath openings
Accommodates a variety of terminating blocks	Adaptable to user requirements
Multiple distribution counts	Counts range in multiples of 5, from 5 to 25
Spiral end seal	One size fits multiple cable configurations

Product Referral Generator

Shield Bonding	pg. 200
Sheath Scuff	pg. 199
Tapes and Sealing	pg. 189
3M™ Scotchlok™ Connectors	pg. 2
3M™ MS ^{2M} Modules	pg. 6



Ordering Information for Empty SLiC Aerial Terminals

Product Number	Block Type	Initial Pair Capacity	Packaging kg (lbs.)/cs.	Minimum Order	UPC 051138-
Empty Terminals with Spiral End Seals					
328-MTPI/SES	ATS/IDC	5 - 25	11.7 (26.0)	4	58545
530-MTPI/SES	ATS/IDC	5 - 25	4.1 (9.1)	1	58776

Empty Housings Available with Rubber End Seals Upon Request
 328 & 530 MT Housing will accommodate other manufacturer's blocks
 * Blocks must be purchased from manufacturer or through your distributor.

Ordering Information for Filled SLiC Aerial Terminals

Product Number	Block Type	Initial Pair Capacity	Packaging kg (lbs.)/cs.	Minimum Order	UPC 051138-
Filled Terminals with Spiral End Seals					
328-PI-5/SES	ATS/IDC	5, 10, 15, 25	12.0 (26.4)	4	75416
328-PI-10/SES	ATS/IDC	5, 10, 15, 25	12.0 (26.4)	4	58546
328-PI-20/SES	ATS/IDC	5, 10, 15, 25	12.0 (26.4)	4	58547
328-PI-25/SES	ATS/IDC	5, 10, 15, 25	13.8 (30.6)	4	58548
530-PI-5/SES	ATS/IDC	5, 10, 15, 25	5.0 (11.0)	1	75417
530-PI-10/SES	ATS/IDC	5, 10, 15, 25	5.0 (11.0)	1	58777
530-PI-20/SES	ATS/IDC	5, 10, 15, 25	5.0 (11.0)	1	58778
530-PI-25/SES	ATS/IDC	5, 10, 15, 25	5.1 (11.22)	1	58779

NOTE: 3" SLiC terminals have an approximate splice bundle capacity of 78.7 mm (3.1"). Based on 24 AWG (.5 mm) 2 bank straight splices using MS² 4000DWP modules; splice capacity is approximately 300 pair. 5" SLiC terminals have an approximate splice bundle capacity of 129.5 mm (5.1"). Based on 26 AWG (.4 mm) 2 bank straight splices using MS² 4000DWP modules; splice capacity is approximately 900 pair.

3M™ SLiC™ Aerial Closure and Terminal Accessories

#	Product Description	Pkg. kg (lbs.)/cs.	Min. Order	UPC
1. AC-HB1 Offset Hanger Brackets				
		1/cs., 2.4 (5.3)	1 set/bag, 10 sets/case [529936]	054007-34416
2. AC-HB2 Extended Hanger Brackets				
		1/cs., 2.4 (5.3)	1 set/bag, 10 sets/case	054007-92926
3. SLiC Rubber End Seal Kits				
	2" Single Port Rubber End Seal	10/cs., 0.6 (1.4)	10 each	054007-57092
	2" Double Port Rubber End Seal	10/cs., 0.5 (1.2)	10 each	054007-71218
	3" Single Port Rubber End Seal	10/cs., 1.0 (2.2)	10 each	054007-57093
	3" Double Port Rubber End Seal	10/cs., 1.0 (2.1)	10 each	054007-57094
	3" Triple Port Rubber End Seal	10/cs., 1.0 (2.2)	10 each	054007-71221
	5" Single Port Rubber End Seal	5/cs., 2.51 (5.5)	5 each	054007-91694
	5" Double Port Rubber End Seal	5/cs., 2.46 (5.4)	5 each	054007-71458
	5" Triple Port Rubber End Seal	5/cs., 1.3 (2.8)	5 each	054007-71220
	7" Double Port Rubber End Seal*	5/cs., 2.4 (5.2)	5 each	054007-71457
	7" Triple Port Rubber End Seal*	5/cs., 2.3 (5.0)	5 each	054007-71219
4. SLiC Spiral End Seal Kits				
	2" Triple Port Spiral End Seal	10/cs., 0.5 (1.2)	10 each	054007-92648
	3" Triple Port Spiral End Seal	10/cs., 1.2 (2.7)	10 each	054007-92649
	5" Four Port Spiral End Seal	5/cs., 2.1 (4.7)	5 each	054007-92650
	7" Five Port Spiral End Seal*	5/cs., 3.5 (7.8)	5 each	054007-92651
5. Sheath Retention Kits				
	SR-3 adds sheath retention to 3" SLiC Terminals and Closures	10/cs.	10 kits per case 1 kit per bag	051138-57641
	SR-5 adds sheath retention to 5" SLiC Terminals and Closures	10/cs.	10 kits per case 1 kit per bag	051138-57642

* Also fits in a 9" closure.



1. 200



2. 201



3. 202



4. 203



5. 204

3900-A Aerial Service Wire Closure Kit



205

Features

- Butt splicing 2-pair aerial drop wire
- Pole and wall mount applications
- Wire gauges ranging from 18 to 24 AWG
- Utilizes available connectors (i.e. Scotchlok™ UY2 and UR2 Connectors)
- Provides primary physical protection
- Free breathing
- Resistant to UV rays

3M™ GATM Series Closures

Closure Selection Guide

To order GATM Series Closures, follow these steps:

1. What is your pair count?
2. What is your cable size?
3. What is your sheath opening?
4. What type of connector are you using? Module (MS² or 710) or Discrete (Scotchlok)?
Note: Bundles built with modular connectors are half the size of discrettes.
5. What is your splice bundle diameter?

These questions should guide you in choosing the correct closure.

2000 Aerial Terminal with Contour Drop Box

A free breathing terminal closure in combination with a separate distribution chamber (with block installed) that may be used with lashed or figure-8 cable in non-pressurized aerial application to quickly and easily terminate up to 25 pairs.

The contour drop box will accommodate 10, 20 and 25 pair raised post nonprotected terminal blocks. In addition, various pair count IDC terminal blocks may be used with the contour drop box.

2000 Aerial Terminal with 10 or 25 Pair Protected Drop Box

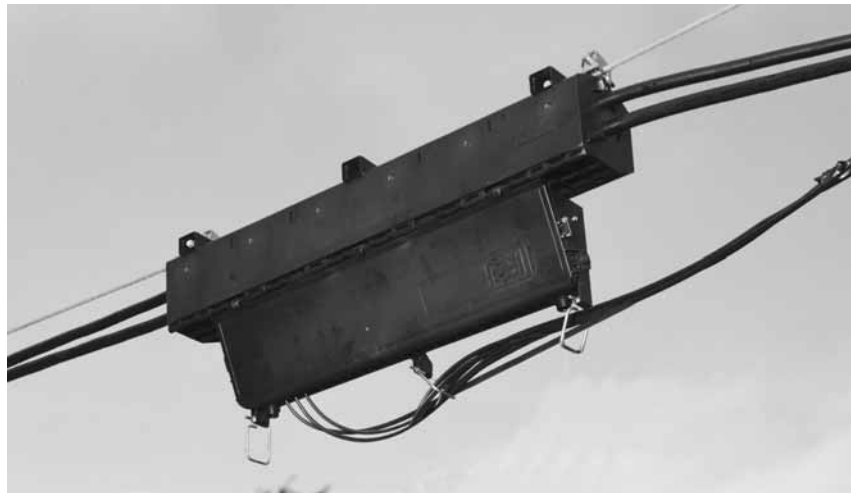
The drop box is for protected terminal blocks which are available with or without arrestors.

5000 and 7000 Aerial Terminal with Contour Drop Box

The contour drop box will accommodate 10, 20 and 25 pair raised post nonprotected terminal block. In addition, various pair count IDC terminal blocks may be used with the Contour drop box.

5000 and 7000 Aerial Terminal with 10 or 25 Pair Protected Drop Box

The drop box is for protected terminal blocks which are available with or without arrestors.



206



Features — Benefits

GATM Series Closures and Terminals

All metal parts are of non-corrosive materials	Durable, long-lasting construction
No special tools, tapes glues or sealants required for assembly	Provides easy installation
Floating bond system is "built in" to closure	For flexibility in terminations
"Free-breathing" terminal closure	Vents moisture while prohibiting dirt, dust and insect entry
Re-enterable	Quick and easy terminations
Pre-cut end seals	Provides rapid sizing to fit a variety of cable sizes
Closures may be extended to protect large damaged sections of cable	Ensures product performance
Standard 10, 20, and 25 pair configurations	Easily fits a variety of applications
Protected and non-protected terminal blocks are available – raise post only	Features that fit your application



Ordering Information for 3M™ Non-protected Terminals GATM Series 2000, 5000 and 7000

Product Number	Sealing Washer Config.	Cable Sheath Diameter Range mm (in.)	Terminal Pair Count	Block Type	Protection Type	Approx. Weight kg (lbs.)	Min. Order (each)	UPC 051138-
2000 Terminals								
GATM92A251112	1 in / 1 out	7.6 - 38.1 (0.30 - 1.50)	25	Raised Post	Non-protected	3.6 (8)	1	77837
5000 Terminals								
GATM95A101112	1 in / 1 out	10.2 - 63.5 (0.40 - 2.5)	10	Raised Post	Non-protected	4.1 (9)	1	77863
GATM95A251112	1 in / 1 out	10.2 - 63.5 (0.40 - 2.5)	25	Raised Post	Non-protected	4.6 (10)	1	77865
7000 Terminals								
GATM97A101112	1 in / 1 out	15.2 - 101.6 (0.60 - 4.0)	10	Raised Post	Non-protected	7.7 (17)	1	77896
GATM97A251112	1 in / 1 out	15.2 - 101.6 (0.60 - 4.0)	25	Raised Post	Non-protected	7.7 (17)	1	77897

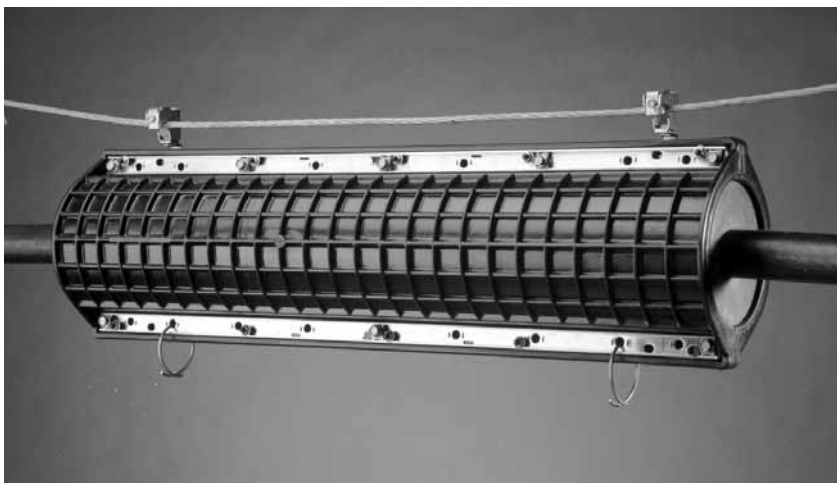
Standard Package = Kit. Minimum Order/Ordering Multiple = 1 Kit.

Ordering Information for 3M™ Protected Terminals GATM Series 2000, 5000 and 7000 with 10- or 25-Pair Protected Drop Box

Product Number	Sealing Washer Config.	Cable Sheath Diameter Range mm (in.)	Terminal Pair Count	Block Type	Protection Type	Approx. Weight kg (lbs.)	Min. Order (each)	UPC 051138-
2000 Terminals								
GATM92B101112	1 in / 1 out	7.6 - 38.1 (0.30 - 1.50)	10	Raised Post	Gas	5.9 (13)	1	77838
GATM92B251112	1 in / 1 out	7.6 - 38.1 (0.30 - 1.50)	25	Raised Post	Gas	6.4 (14)	1	78190
5000 Terminals								
GATM95B101112	1 in / 1 out	10.2 - 63.5 (0.40 - 2.5)	10	Raised Post	Gas	6.4 (14)	1	77867
GATM95C101112	1 in / 1 out	10.2 - 63.5 (0.40 - 2.5)	20	Raised Post	Carbon	6.4 (14)	1	78708
GATM95B251112	1 in / 1 out	10.2 - 63.5 (0.40 - 2.5)	25	Raised Post	Gas	6.8 (15)	1	78707
7000 Terminals								
GATM97B101112	1 in / 1 out	15.2 - 101.6 (0.60 - 4.0)	10	Raised Post	Gas	7.7 (17)	1	77898

Standard Package = Kit. Minimum Order/Ordering Multiple = 1 Kit.

3M™ Closures GATM Series



GATM "Super Stretch" Closure for aerial splice protection and sheath repairs.

207

Product Referral Generator

Shield Bonding	pg. 200
Tapes and Sealing	pg. 189
710 Modules	pg. 22
3M™ MS ² ™ Modules	pg. 6
3M™ Scotchlok™ Connectors	pg. 2

Ordering Information for 3M™ Aerial Super Stretch Closures GATM

Product Number	Inside Diameter mm (in.)	Max. Sheath Opening mm (in.)	Max. Number Cable Pairs (24 gauge)	Number of Cable Openings	Overall Length mm (in.)	Approx. Weight kg (lbs.)	Min. Order (each)	UPC 051138-
GATM9S7361111	178 (7)	635 (25)	2100	1 in / 1 out	914 (36)	10.3 (22.80)	1	78326
GATM9S7441111	178 (7)	851 (33.5)	2700	1 in / 1 out	1130 (44.5)	12.3 (27.10)	1	78329
GATM9S9362211	241 (9.5)	635 (25)	4200	2 in / 2 out	914 (36)	15.2 (33.5)	1	78332
GATM9S9442211	241 (9.5)	851 (33.5)	4800	2 in / 2 out	1130 (44.5)	17.9 (39.5)	1	78335

Standard Package = Kit. Minimum Order/Ordering Multiple = 1 Kit.

Sealing Washer Selection Chart for 3M™ Aerial Super Stretch Closure GATM

Product Number	Sealing Washer Entry Config.	Sealing Washer Dia. mm (in.)	Cable Dia. Range mm (in.)	Qty. in Standard Package	Min. Order/Ordering Multiple	Approx. Weight kg (lbs.)	UPC 051138-
GATM9S71E	Single entry	718 (7)	1 @ 18.3 - 101.6 (0.72 - 4.0)	1	1 pkg.	0.88 (1.95)	78323
GATM9S72E	Double entry	718 (7)	2 @ 14.0 - 63.5 (0.55 - 2.5)	1	1 pkg.	0.88 (1.95)	78324
GATM9S73E	Triple entry	718 (7)	3 @ 14.0 - 63.5 (0.55 - 2.5)	1	1 pkg.	0.88 (1.95)	78327
GATM9S92E	Double entry	241 (9.5)	2 @ 14.0 - 101.6 (0.55 - 4.0)	1	1 pkg.	1.92 (4.25)	78330
GATM9S93E	Triple entry	241 (9.5)	1 @ 14.0 - 88.9 (0.55 - 3.5) 2 @ 14.0 - 63.5 (0.55 - 2.5)	1	1 pkg.	1.92 (4.25)	78333
GATM9S94E	Quadruple entry	241 (9.5)	2 @ 14.0 - 88.9 (0.55 - 3.5) 2 @ 14.0 - 53.3 (0.55 - 2.1)	1	1 pkg.	1.92 (4.25)	78336



3M™ Closure Accessories GATM Series

Ordering Information for 3M™ Closure Accessories GATM Series

Product Number	Description	Quantity in Standard Package	Min. Order/ Ordering Multiple	Weight per Min. Order kg (lbs.)	Min. Order (each)	UPC 051138-
Drop Chamber Housing						
Replacement housings for GATM aerial terminals.						
GATM90100	10 - 25 pair contour housing	1	1 pkg.	0.9 (2)	1	77812
Closure Extender Kit						
For connecting two closures together or covering sections of damaged cable.						
GATM92960	For 2000 Series Closure	1	25 pkgs.	5.4 (12)	1	77831
GATM95960	For 5000 Series Closure	1	25 pkgs.	5.4 (12)	1	77860
GATM97960	For 7000 Series Closure	1	25 pkgs.	5.4 (12)	1	77894
Washer Housing Kit						
Used in conjunction with splice closure extender kit to lengthen a closure.						
GATM92961	For 2000 Series Closure	1	1 pkg.	0.23 (0.5)	1	77832
GATM95961	For 5000 Series Closure	1	1 pkg.	0.23 (0.5)	1	77861
GATM97961	For 7000 Series Closure	1	1 pkg.	0.23 (0.5)	1	77895

Ordering Information for 3M™ Closure Washers and End Sealing GATM Series

Product Number	Description	Quantity in Standard Package	Min. Order/ Ordering Multiple	Weight per Min. Order kg (lbs.)	UPC 051138-
2000 Washers					
GATM92911	Single Entry Washer	1	50 pkgs.	4.6 (10)	77828
GATM92922	Double Entry Washer	1	50 pkgs.	5.4 (12)	77829
5000 Washers					
GATM95911	Single Entry Washer	1	25 pkgs.	5.4 (12)	77855
GATM95922	Double Entry Washer	1	25 pkgs.	5.0 (11)	77856
GATM95933	Triple Entry Washer	1	25 pkgs.	4.6 (10)	77858
7000 Washers					
GATM97911	Single Entry Washer	1	10 pkgs.	0.9 (2)	77890
GATM97922	Double Entry Washer	1	10 pkgs.	0.9 (2)	77891
GATM97933	Triple Entry Washer	1	10 pkgs.	0.9 (2)	77893

For sealing the ends of splice and terminal closures.

Ordering Information for 3M™ Raised Post Terminal Blocks GATM

Product Number	Description	Quantity in Standard Package	Min. Order/ Ordering Multiple	Weight per Min. Order kg (lbs.)	UPC 051138-
GATM96010	Non protected 10 pair block	1	1 pkg.	0.3 (0.7)	77877
Replacement for terminal blocks found in: GATM92A10-11, GATM95A10-11, GATM97A10-11.					
GATM96110	Gas protected 10 pair block	1	1 pkg.	0.9 (2)	77879
Replacement for terminal blocks found in: GATM92B10-11, GATM95B10-11, GATM97B10-11.					
GATM96025	Non protected 25 pair block	1	1 pkg.	0.9 (2)	77878
Replacement for terminal blocks found in: GATM92A25-11, GATM95A25-11, GATM97A25-11.					
GATM96125	Protected 25 pair block	1	1 pkg.	2.3 (5)	77880
Replacement for terminal blocks found in: GATM92B25-11, GATM95B25-11, GATM97B25-11.					



3M™ Dome Closures

Closure Selection Guide

To order Dome Closures, follow these steps:

1. What is your pair count?
2. What is your cable size?
3. What is your sheath opening?
4. What type of connector are you using? Module (MS² or 710) or Discrete (Scotchlok)?
Note: Bundles built with modular connectors are half the size of discrettes.
5. What is your splice bundle diameter?

These questions should guide you in choosing the correct closure.

Re-enterable Dome Closures with Pull 'N' Shrink Tubing (PST) offer fast, rugged splice protection with easy reentry.

An economical method of protecting butt splices for pedestal, hand hole or pole mount applications is provided by the Re-enterable PST Dome Closures. The closure provides protection from the harmful effects of moisture, insects, and ultraviolet light, while providing no cost re-entry.

The dome closure is an easily re-enterable closure that protects the splice—without requiring special tools or flame for installation.

The splice is enclosed in a split polypropylene dome which is clamped together with a steel latch and sealed with an O-ring. An expanded ethylene propylene rubber tube (PST) is slipped over the base of the enclosure and onto a gel sealing collar. Pulling a plastic rip cord on the PST allows it to shrink to the minimum outside diameter necessary to form a tight seal. The flexible tubing material conforms to the shape of the collar, sealing out both air and water.

The kit is available in four sizes, which accommodate splices from 25- to 900-pair. For encapsulated plant, three sizes are available which accommodate splices from 25- to 600-pair.

RUS Listed



208



Product Referral Generator

Compounds/Encapsulants	pg. 185
Shield Bonding	pg. 200
Cable Lubricants	pg. 322
3M™ Scotchlok™ Connectors	pg. 2
3M™ MS ² ™ Modules	pg. 6
Tapes	pg. 189
Sheath Scuff	pg. 199
Pair Saver	pg. 199
Cable Ties	pg. 204



Features — Benefits

Re-enterable PST Dome Closures

Unique latching system to secure dome to the sealed base	Easily re-enterable, no reentry kit, seal undisturbed at reentry, no tools needed to reenter
Gel end seal	Air tight seal over multiple cable diameters and configurations
Retrofits existing PST	Multiple applications

Specifications for 3M™ Re-enterable PST Dome Closure Kits

	4604	4606	4608
Closure Outside Dimension	97 x 71 (3.8 x 2.8) W x D mm (in.)	142 x 99 (5.6 x 3.9)	178 x 137 (7.0 x 5.4)
Closure Height (H) mm (in.)	572 (22.5)	572 (22.5)	597 (23.5)
Approx. Bundle Diameter	64 (2.5) mm (in.)	99 (3.9)	135 (5.3)
Minimum Reliable CAD Pedestal	CAD 4	CAD 6	CAD 8
Main Cables mm (in.)	13-28 (0.5-1.1)	23-41 (0.9-1.6)	36-64 (1.4-2.5)
Terminal Cables mm (in.)	10-15 (0.4-0.6)	10-15 (0.4-0.6)	10-20 (0.4-0.8)
Branch Cables mm (in.)	–	18-25 (0.7-1.0)	23-33 (0.9-1.3)
Drop Cables mm (in.)	9 max. (0.35 max.) 2 cable max.	9 max. (0.35 max.) 2 cable max.	9 max. (0.35 max.) 2 cable max.
*Approx. Splice Range	100 pr.-MS ² 50 pr.-UR2	300 pr.-MS ² 100 pr.-UR2	600 pr.-MS ² 300 pr.-UR2

Ordering Information

Packaging kg (lbs.)	15/cs. 17.0 (37.5)	9/cs. 15.6 (34.4)	5/cs. 12.2 (26.8)
Minimum Order	15 kits	9 kits	5 kits
UPC	051138-36513	051138-36514	051138-36515

*NOTE: Based on 2 bank MS²™ 4000-DWP Modules and Scotchlok™ Connectors installed per 3M practices. Examples: 100-pair means 100-pair In and 100-pair Out or 100 pair straight splice.

Kit components included: Closure Assembly, Dome, Base, O-Ring, Latch, Gel End Seal, Ground Wires, PST Sheath Scuff, Desiccant Bag.

Companion products needed: Scotch® Vinyl Tape 88T 38 mm (1-1/2") Wide, 130C LR Rubber Tape, 3M™ Scotchlok™ Shield Bond Connectors 4460 Series, 3M™ Scotchlok™ UR2 or MS² Splice Connectors, 6228 Cable Ties, 381 mm (15").

Ordering Information for 3M™ Re-enterable Dome Closure Accessories

Product Number	Size cm (in.)	Packaging kg (lbs.)	Minimum Order	UPC
4604-PST Pull N' Shrink Tubing	11.4 x 13.3 (4.8 x 5.25)	5/cs., 2,4 (5.5)	5 each	054007-92231
4606-PST Pull N' Shrink Tubing	14.6 x 15.8 (5.75 x 6.25)	5/cs., 4,0 (8.92)	5 each	054007-92230
4608-PST Pull N' Shrink Tubing	18.4 x 18.4 (7.25 x 7.25)	5/cs., 9,4 (20.78)	5 each	054007-92229
4600-GSS Gel Sealant Strip	6.3 x 50.7 (2.5 x 20)	50/cs., 9,4 (20.78)	50 each	054007-92221
4600-NID Non-Indicating Desiccant Bags	–	100/cs., 3,6 (8.0)	100 each	051138-36517



Ordering Information for 3M™ Gel-Wrap PST Closure Accessories

Product Number	Packaging kg (lbs.)	Minimum Order	UPC
GW-922- Gel Wrap	5.9 (13)	10 each/cs.	051138-57700

Ordering Information for 3M™ PST Pedestal Closure Accessories

Product Number	Size mm (in.)	Packaging kg (lbs.)	Minimum Order	UPC
4634-R PST Pedestal Splice Closure Re-entry Kit	76.2 (3.0)	1/box, 10/cs., 3.4 (7.6)	10 kits	054007-17480
4635-R PST Pedestal Splice Closure Re-entry Kit	114.3 (4.5)	1/box, 10/cs., 5.4 (12.1)	10 kits	054007-17481
4636-R PST Pedestal Splice Closure Re-entry Kit	152.4 (6.0)	1/bag, 5/cs., 4.5 (9.95)	5 kits	054007-17654
2900-R Sealing Collar Tape	38 x 1.5 m (1.5 x 5')	5/box 50/cs., 14.4 (31.9)	50 rolls	054007-68546
4637-R PST Pedestal Splice Closure Re-entry Kit	–	5/cs., 10.1 (22.4)	5 kits	054007-71534



3M™ Foam-Sealed Closures

Closure Selection Guide

To order Foam-Sealed Closures, follow these steps:

1. What is your pair count?
2. What is your cable size?
3. What is your sheath opening?
4. What type of connector are you using? Module (MS² or 710) or Discrete (Scotchlok)?
Note: Bundles built with modular connectors are half the size of discrettes.
5. What is your splice bundle diameter?

These questions should guide you in choosing the correct closure.

Foam-Sealed Closures enclose cable plant splices in direct buried, hand hole, and man hole applications. They also protect cable splices from environmental elements found in these applications and enclose a variety of cable configurations. The closures are also used to easily accommodate distribution drops from the main cable.

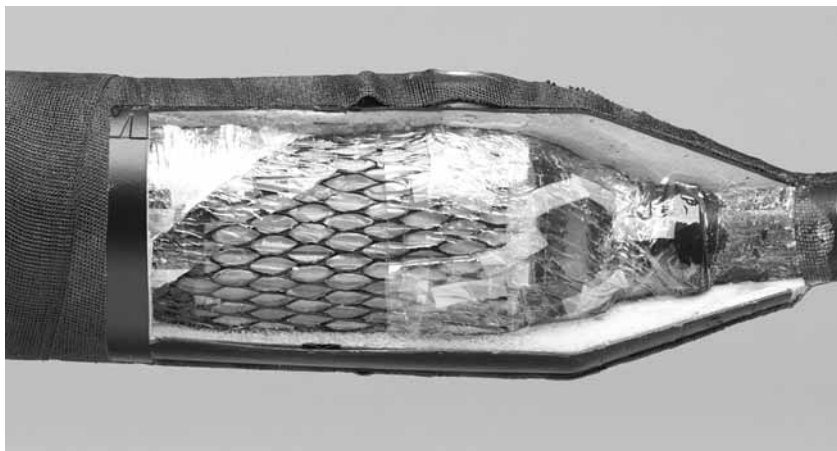
The methods used in foam-sealed closures have evolved from early gravity filled methods to compound compression methods.

Foam-Sealed Closure

Foam Sealed Closures use the Compound Compression method to apply the pressure to the encapsulant. The polyethylene closure body is over wrapped with the armorcast structural material for physical strength. 3M 4411 expandable sealant is used to fill the void between the closure body and the compound compression splice. The expandable foam adheres to the closure body, E-Z wrap and the cable sheath which in turn provides a water tight barrier around the splice and cables entering the closure.

Buried Compound Compression

The Better Buried Compound Compression Closure method forces the encapsulant up the cable core to



209

stop water ingress. The product is simple to install, comes with the spacer web and plastic wrap and is used to hold and force the encapsulant. The product is offered in different sizes to cover various cable ranges and can be easily extended and bricked.

The Better Buried and 89 Series Closures use a gravity fill method of encapsulating and protecting the cable splice. Both kits are simple to install and are offered with a full product offering to cover the complete cable ranges found in the outside plant. In addition, both kits can be ordered with 4442 High Gel re-enterable encapsulant. The 89 Series can also



Better Buried Closures

210

be purchased with 4407 Encapsulant for making a permanent, hard encapsulated closure with maximum water protection.



Product Referral Generator

Compounds/Encapsulants	pg. 185
Shield Bonding	pg. 200
Cable Lubricants	pg. 322
3M™ Scotchlok™ Connectors	pg. 2
3M™ MS ² ™ Modules	pg. 6
Tapes	pg. 189
Sheath Scuff	pg. 199
Pair Saver	pg. 199
Cable Ties	pg. 204



Features — Benefits

Foam-Sealed Closures

Few loose parts	Easy assembly and improved productivity
No heat required	Eliminate safety concerns
Adjustable closure diameter	Minimizes compound usage and total cost
Tough outer shell	Can be used in harsh environments
Rigid body closure	Easy re-entry, physical strength
Rigid bonding assembly	Increased physical strength, provides more support to the cable
Solvent resistant	Gasoline won't erode expandable foam and armorcast
Can be cut with a zip cord	Easy re-entry & saves time
Can be extended easily	No need to stock different sizes
Total kit	No need to order individual parts, reduces total cost

Ordering Information for 3M™ Foam-Sealed Closure with Compound Compression

Product Number	FSC- 2x12	FSC- 3x12 S	FSC- 3x12 L	FSC- 3x19	FSC- 3x21	FSC- 4x19	FSC- 4x21	FSC- 6x19	FSC- 8x19	FSC- 8x19 L
Splice Bundle Diameter mm (in.)	31 (1.25)	50 (2)	76 (3)	76 (3)	76 (3.0)	100 (3.9)	100 (3.9)	145 (5.7)	190 (7.48)	190 (7.48)
Max. Splice Opening mm (in.)	228 (9)	255 (10)	255 (10)	430 (17)	533 (21)	430 (17)	533 (21)	480 (19)	480 (19)	480 (19)
Closure Length End-To-End mm (in.)	90 (15.25)	546 (21.5)	546 (21.5)	724 (28.5)	838.2 (33)	724 (28.5)	838.2 (33)	775 (30.5)	775 (30.5)	775 (30.5)
3M™ MS ² ™ 4000 DWP Module Splice Max.	0	100/24	200/24	400/24	400/24	600/24	600/24	1200/24	2400/26	2700/26
3M™ Scotchlok™ Connector Splice UY2	25/22	75/24	200/24	400/24	400/24	600/24	600/24	1200/24	2400/26	2700/26
Approx. Compound Required ml (g)	165 -150	385 -350	769 -700	1648 -1500	1868 -1700	2473 -2250	2857 -2600	5769 -5250	8242 -7500	9890 -9000
Ordering Information										
Packaging	1 kit	1 kit	1 kit	1 kit	1 kit	1 kit	1 kit	1 kit	1 kit	1 kit
Minimum Order	1 kit	1 kit	1 kit	1 kit	1 kit	1 kit	1 kit	1 kit	1 kit	1 kit
UPC 051138-	75365	70899	70901	70900	76153	70902	76154	70903	70904	70905

Additional products needed to complete this product:

- Splicing Connectors and External Bonding Kit (if necessary)
- Encapsulant
- E-Z Wrap

3M™ Better Buried Closures

Closure Selection Guide

To order Better Buried Closures, follow these steps:

1. Determine closure size using pair capacity and maximum opening, (i.e. = BB2 x 12)
2. Using closure size from Step 1, determine splice and cable configuration code. (i.e. = SB/2SC-LHS)
(Combine steps 1 and 2 to determine product number (i.e. = BB2 x 12 SB/2SC-LHS))

Product Nomenclature:

BB = Better Buried	SC = Single Port End Cap
FC = Flat Cap	SB = Strain Relief Bond Bar
DC = Double Port End Cap	PC = Puddle Cap
SW = Spaces Web	TC = Triple Port End Cap
LHS = Locking Harness System	DS = Double Sleeve

Closure Capacity for BB2x12 through BB4x12

Step 1	Better Buried Closures				
Description	BB2x12	BB2x24	BB3x12	BB3x24	BB4x12
Splice Bundle Diameter mm (in.)	50 (2)	50 (2)	75 (3)	75 (3)	100 (4)
Max. Splice Opening mm (in.)	177 (7)	425 (17)	177 (7)	425 (17)	177 (7)
Closure Length End To End mm (in.)	400 (16)	700 (28)	400 (16)	700 (28)	400 (16)
MS ² ™ 4000 DWP Module Splice Maximum Pair Capacity	50-pr.	100-pr.	100-pr.	200-pr.	200-pr.
Scotchlok™ Connector UR2/UR	25-pr.	50-pr.	75-pr.	100-pr.	150-pr.
Approx. Compound Required ml (g*)	660 (600)	1,320 (1,200)	1,320 (1,200)	3,300 (3,000)	2,500 (2,250)

*Grams of 4442 High Gel Re-enterable Encapsulant based on the density of 1.1ml (0.9g). The density of other re-enterable encapsulants will vary.



Splice and Cable Configurations for BB2x12 through BB4x12

Step 2	Better Buried Closures				
Description	BB2x12	BB2x24	BB3x12	BB3x24	BB4x12
In-line Splice With Single End Caps (1 in/1 out)	SB/2SC-LHS	SB/2SC-LHS	–	SB/2SC-LHS	SB/2DC-LHS
In-line Splice With 1 Single & 1 Double End Cap (1 in/2 out)	–	SB/SC, DC-LHS	–	SB/SC, DC-LHS	–
In-line Splice With 1 Single & 1 Double End Cap, (SB/SC, DC-LHS), Plus 4462 Shield Bond Connector And 4442 High Gel (1 in/2 out)	4462/High Gel SC, DC-LHS	4462/High Gel SC, DC-LHS	–	4462/High Gel SC, DC-LHS	–
In-line Splice With 2 Double End Caps (2 in/2 out)	–	–	SB/2DC-LHS	–	–
In-line Splice With 1 Double & 1 Triple End Cap (2 in/3 out)	–	–	–	–	–
Butt Splice With End Cap	2BB BUTT-LHS	–	3BB BUTT-LHS	–	4BB BUTT-LHS

End Caps and Closure Extension Sleeves for BB2x12 through BB4x12

Accessories					
Description	BB2x12	BB2x24	BB3x12	BB3x24	BB4x12
Single Entry	2" SC-LHS BB	2" SC-LHS BB	3" SC-LHS BB	3" SC-LHS BB	4" SC-LHS BB
Double Entry	2" DC-LHS BB	2" DC-LHS BB	3" DC-LHS BB	3" DC-LHS BB	4" DC-LHS BB
Triple Entry	–	–	–	–	–
1 Flat Cap, 1 Puddle Cap	–	–	–	–	4" BB FC/PC
Sleeve Name	2DS-12-BB	2DS-24-BB	3DS-24-BB	3DS-24-BB	4DS-24-BB

Ordering Example: BB2x24 SB/SC, DC-LHS

- BB = A Better Buried Closure
- 2x24 = 2 inch Diameter, 24 inch Length
- SB = Strain Relief Bond Bar
- SC = One Single Port End Cap
- DC = One Double Port End Cap
- LHS = Locking Harness System

Closure Capacity for BB4x24 through BB9x26

Step 1 Better Buried Closures					
Description	BB4x24	BB5x26	BB6x26	BB7x26	BB9x26
Splice Bundle Diameter mm (in.)	100 (4)	125 (5)	150 (6)	175(7)	225(9)
Max. Splice Opening mm (in.)	425 (17)	475 (19)	475 (19)	475 (19)	475 (19)
Closure Length End To End mm (in.)	750 (30)	750 (30)	750 (30)	750 (30)	750 (30)
MS ² ™ 4000 DWP Module Splice Maximum Pair Capacity	400-pr.	600-pr.	900-pr.	1,200-pr.	2,400-pr.
Scotchlok™ Connector UR2/UR	200-pr.	300-pr.	400-pr.	600-pr.	900-pr.
Approx. Compound Required ml (g)	5,000 (4,500)	8,300 (7,200)	13,750 (12,500)	16,500 (15,000)	23,100 (21,000)

Splice and Cable Configurations for BB4x24 through BB9x26

Step 2					
Description	BB4x24	BB5x26	BB6x26	BB7x26	BB9x26
In-line Splice With Single End Caps (1 in/1 out)	SB/2SC-LHS	SB/2SC-LHS	–	–	–
In-line Splice With 1 Single & 1 Double End Cap (1 in/2 out)	SB/SC, DC-LHS	SB/SC, DC-LHS	–	–	–
In-line Splice With 1 Single & 1 Double End Cap, (SB/SC, DC-LHS), Plus 4462 Shield Bond Connector And 4442 High Gel (1 in/2 out)	4462/High Gel SC, DC-LHS	4462/High Gel SC, DC-LHS	–	–	–
In-line Splice With 2 Double End Caps (2 in/2 out)	–	–	SB/2DC-LHS	SB/2DC-LHS	SB/2DC-LHS
In-line Splice With 1 Double & 1 Triple End Cap (2 in/3 out)	–	–	–	SB/DC, TC-LHS	SB/DC, TC-LHS
Butt Splice With Double End Cap	SW/FC, PC-LHS	SW/FC, PC-LHS	–	SW/FC, PC-LHS	–

End Caps and Closure Extension Sleeves for BB4x24 through BB9x26

Accessories					
Description	BB4x24	BB5x26	BB6x26	BB7x26	BB9x26
Single Entry	4" SC-LHS BB	5" SC-LHS BB	–	–	–
Double Entry	4" DC-LHS BB	5" DC-LHS BB	6" DC-LHS BB	7" DC-LHS BB	9" DC-LHS BB
Triple Entry	–	–	–	7" TC-LHS BB	9" TC-LHS BB
1 Flat Cap, 1 Puddle Cap	4" BB FC/PC	5" BB FC/PC	–	7" BB FC/PC	–
Sleeve Name	4DS-24-BB	5DS-26-BB	6DS-26-BB	7DS-26-BB	9DS-26-BB

Ordering Information for Better Buried Closure Complete Kits

Product Number	Packaging kg (lbs.)	Minimum Order	UPC
BB2x12/4462/High Gel	1/cs., 1.4 (3.2)	1 kit	051138-36502
BB2x24/4462/High Gel	1/cs., 2.6 (5.8)	1 kit	051138-36503
BB3x24/4462/High Gel	1/cs., 5.9 (13.0)	1 kit	051138-36504
BB4x24/4462/High Gel	1/cs., 8.6 (19.0)	1 kit	051138-36505
BB5x26/4462/High Gel	1/cs., 13.1 (28.8)	1 kit	051138-36506

Note: Kits do not include Scotchlok, MS² or 710 connectors.

Ordering Information for Better Buried Closure Kits

Product Number	Packaging kg (lbs.)	Minimum Order	UPC
BB2x12 SB/2SC-LHS	10/cs., 6.3 (13.8)	10 kits	054007-68228
BB2x24 SB/2SC-LHS	1/cs., 1.4 (3.0)	1 kit	054007-68230
BB3x24 SB/2SC-LHS	1/cs., 1.8 (3.9)	1 kit	054007-68236
BB4x24 SB/2SC-LHS	1/cs., 2.3 (5.1)	1 kit	054007-68241
BB5x26 SB/2SC-LHS	1/cs., 3.2 (7.1)	1 kit	054007-68246
BB2x12 SW/FC, DC-LHS	1/cs., 0.7 (1.5)	1 kit	054007-71342
BB3x12 SW/FC, DC-LHS	1/cs., 0.9 (2.0)	1 kit	054007-71343
BB4x12 SW/FC, DC-LHS	1/cs., 1.1 (2.5)	1 kit	054007-63209
BB4x24 SW/FC-PC	1/cs., 2.08 (4.6)	1 kit	054007-63923
BB5x26 SW/FC-PC	1/cs., 3.2 (7.0)	1 kit	054007-63836
BB7x26 SW/FC-PC	1/cs., 4.9 (9.0)	1 kit	054007-68215
BB2x24 SB/SC, DC-LHS	1/cs., 1.4 (3.0)	1 kit	054007-68229
BB3x12 SB/SC, DC-LHS	1/cs., 0.9 (2.0)	1 kit	051138-57551
BB3x24 SB/SC, DC-LHS	1/cs., 1.7 (3.7)	1 kit	054007-68235
BB4x24 SB/SC, DC-LHS	1/cs., 1.7 (3.7)	1 kit	054007-68240
BB5x26 SB/SC, DC-LHS	1/cs., 2.3 (5.0)	1 kit	051138-36506
BB3x24 SB/2SC, DC-LHS	1/cs., 1.8 (3.9)	1 kit	054007-68236
BB4x24 SB/2SC, DC-LHS	1/cs., 1.7 (3.7)	1 kit	054007-68240
BB4x12 SB/2DC-LHS	1/cs., 1.1 (2.5)	1 kit	051138-57936
BB6x26 SB/2DC-LHS	1/cs., 3.6 (8.0)	1 kit	054007-71373
BB7x26 SB/2DC-LHS	1/cs., 4.2 (9.3)	1 kit	054007-71375
BB9x26 SB/2DC-LHS	1/cs., 5.1 (11.3)	1 kit	054007-71377
BB7x26 SB/DC, TC-LHS	1/cs., 4.7 (10.4)	1 kit	054007-71374
BB9x26 SB/DC, TC-LHS	1/cs., 5.9 (13.0)	1 kit	054007-71376

Note: Kits do not include encapsulant, shield bond connectors or 2900R and 130C tapes.

Ordering Information for Better Buried Closure Accessories

Product Number	Packaging kg (lbs.)	Minimum Order	UPC
4430 Spacer Web 3x20	2/cs., 1.04 (2.3)	2 each	054007-30362
4430 Spacer Web 6x20	1/cs., 0.90 (2.0)	1 each	054007-30361



Ordering Information for Better Buried Closure Kit Spare Parts

Product Number	Packaging kg (lbs.)	Minimum Order	UPC
2SC-LHS BB	10/cs., 0.9 (2.0)	10 each	054007-68289
2DC-LHS BB	10/cs., 1.0 (2.3)	10 each	054007-68290
2DS-24-BB	10/cs., 7.4 (16.4)	10 each	054007-31070
3SC-LHS BB	10/cs., 1.4 (3.0)	10 each	054007-68291
3DC-LHS BB	10/cs., 1.4 (3.0)	10 each	054007-68292
3DS-24-BB	10/cs., 12 (26.5)	10 each	054007-31071
4SC-LHS BB	10/cs., 1.8 (4.0)	10 each	054007-68293
4DC-LHS BB	10/cs., 2.3 (5.0)	10 each	054007-68294
4BB FC/PC	10/cs., 2.3 (5.0)	10 kits	054007-68283
4DS-24-BB	10/cs., 16.1 (35.4)	10 each	054007-31072
5SC-LHS BB	10/cs., 2.7 (6.0)	10 each	054007-68295
5DC-LHS BB	10/cs., 3.2 (7.0)	10 each	054007-68296
5BB FC/PC	10/cs., 3.2 (7.0)	10 kits	054007-68284
5DS-26-BB	10/cs., 13.6 (30.0)	10 each	054007-31809
6DC-LHS BB	1/cs., 0.5 (1.0)	1 each	054007-71391
6DS-26-BB	1/cs., 2.9 (6.5)	1 each	054007-34039
7DC-LHS BB	1/cs., 0.5 (1.0)	1 each	054007-71394
7TC-LHS BB	1/cs., 0.5 (1.0)	1 each	054007-71393
7BB FC/PC	5/cs., 2.3 (5.0)	5 kits	054007-68285
7DS-26-BB	1/cs., 3.4 (7.5)	1 each	054007-31915
9DC-LHS BB	1/cs., 0.5 (1.0)	1 each	054007-71395
9TC-LHS BB	1/cs., 0.5 (1.0)	1 each	054007-71396
9DS-26-BB	1/cs., 4.9 (9.0)	1 each	054007-31916

Ordering Information for Compound Compression Kits

Product Number	Packaging kg (lbs.)	Minimum Order	UPC
BB2x12CC SB/2SC-LHS	10/cs., 8.16 (18.0)	10 kits	054007-91422
BB2x24CC SB/2SC-LHS	10/cs., 1.49 (3.3)	1 kit	054007-91423
BB3x12CC SB/2SC-LHS	1/cs., 1.36 (3.0)	1 kit	054007-91572
BB3x24CC SB/2SC-LHS	1/cs., 1.81 (4.0)	1 kit	054007-92836
BB4x24CC SB/2SC-LHS	1/cs., 2.72 (6.0)	1 kit	054007-91424
BB5x26CC SB/2SC-LHS	1/cs., 3.62 (8.0)	1 kit	054007-92837
BB6x26CC SB/2DC-LHS	1/cs., 4.53 (10.0)	1 kit	054007-91425
BB7x26CC SB/2DC-LHS	1/cs., 5.21 (11.5)	1 kit	054007-92838
BB9x26CC SB/2DC-LHS	1/cs., 5.57 (12.3)	1 kit	054007-92839
BB/CC-R	1/cs., 0.90 (2.0)	1 kit	054007-92842

Note: Kits do not include encapsulant or shield bond connectors.

Maximum Splice Bundle Capacities (Straight Splice) for Better Buried Compound Compression Kits

Product Number	4000-DWP or 25-pair modular connector	UR Connectors (w/3" Pigtails)	UPC
BB2x12CC SB/2SC-LHS	50 pr., 24 AWG (0.5 mm)	25 pr., 22 AWG (0.6 mm)	054007-91422
BB3x12CC SB/2SC-LHS	100 pr., 22 AWG (0.6 mm)	75 pr., 22 AWG (0.6 mm)	054007-91572
BB2x24CC SB/2SC-LHS	100 pr., 24 AWG (0.5 mm)	50 pr., 22 AWG (0.6 mm)	054007-91423
BB3x24CC SB/2SC-LHS	200 pr., 24 AWG (0.5 mm)	100 pr., 22 AWG (0.6 mm)	054007-92836
BB4x24CC SB/2SC-LHS	400 pr., 24 AWG (0.5 mm)	200 pr., 22 AWG (0.6 mm)	054007-91424
BB5x26CC SB/2SC-LHS	600 pr., 24 AWG (0.5 mm)	300 pr., 22 AWG (0.6 mm)	054007-92837
BB6x26CC SB/2DC-LHS	900 pr., 24 AWG (0.5 mm)	400 pr., 22 AWG (0.6 mm)	054007-91425
BB7x26CC SB/2DC-LHS	1200 pr., 24 AWG (0.5 mm)	600 pr., 22 AWG (0.6 mm)	054007-92838
BB9x26CC SB/2DC-LHS	2400 pr., 24 AWG (0.5 mm)	900 pr., 22 AWG (0.6 mm)	054007-92839
BB/CC-R Reentry Kit	–	–	054007-92842



Closure Dimension Guide for Better Buried Closures

Closure End Cap Port Diameters					Max. Splice Openings			Approx. Amount of Compound Required
Closure Size	Single Entry (Maximum)	Multiple Entry (Maximum)			Single Sheath	Double Sheath		Average Splice
		1	2	3		Outer	Inner	
BB2x12 2" x 12" (50 x 305 mm)	1.2" 30 mm	1.2" 30 mm	0.7" 18 mm	–	5" 127 mm	–	–	21 oz. 600 g
BB3x12 3" x 12" (76 x 305 mm)	1.6" 41 mm	1.6" 41 mm	1.0" 25 mm	–	5" 127 mm	–	–	42 oz. 1200 g
BB2x24 2" x 24" (50 x 610 mm)	1.2" 30 mm	1.2" 30 mm	0.7" 18 mm	–	17" 432 mm	17" 432 mm	14" 356 mm	42 oz. 1200 g
BB3x24 3" x 24" (76 x 610 mm)	1.6" 41 mm	1.6" 41 mm	1.0" 25 mm	–	17" 432 mm	17" 432 mm	14" 356 mm	106 oz. 3000 g
BB4x24 4" x 24" (102 x 610 mm)	2.0" 51 mm	2.0" 51 mm	1.5" 38 mm	–	17" 432 mm	17" 432 mm	14" 356 mm	159 oz. 4500 g
BB5x26 5" x 26" (127 x 660 mm)	2.4" 61 mm	2.4" 61 mm	1.8" 46 mm	–	19" 483 mm	19" 483 mm	16" 406 mm	254 oz. 7200 g
BB6x26 6" x 26" (152 x 660 mm)	3.3" 84 mm	2.7" 68 mm	2.0" 50 mm	1.5" 38 mm	19" 483 mm	19" 483 mm	16" 406 mm	441 oz. 12500 g
BB7x26 7" x 26" (178 x 660 mm)	3.5" 89 mm	3.5" 89 mm	2.2" 56 mm	2.2" 56 mm	19" 483 mm	19" 483 mm	16" 406 mm	530 oz. 15000 g
BB9x26 9" x 26" (229 x 660 mm)	4.0" 102 mm	4.0" 102 mm	2.5" 64 mm	2.5" 64 mm	19" 483 mm	19" 483 mm	16" 406 mm	742 oz. 21000 g

3M™ Scotchcast™ Closures 89 Series

Closure Selection Guide

To order Scotchcast Closures 89 Series, follow these steps:

1. What is your pair count?
2. What is your cable size?
3. What is your sheath opening?
4. What type of connector are you using? Module (MS² or 710) or Discrete (Scotchlok)?
Note: Bundles built with modular connectors are half the size of discrettes.
5. What is your splice bundle diameter?

These questions should guide you in choosing the correct closure.

8981/High Gel, 8982/High Gel,
8983/High Gel, 8984/High Gel,
8985/High Gel, 8986/High Gel

RUS Listed

These rigid body closures use a gravity fill method of encapsulating and protecting cables. They are packed with 4442 High Gel Re-enterable Encapsulant/8882 High Gel

Re-enterable Encapsulant for easy re-entry and include:

- 3M™ Scotchlok™ 4462-Shield Bond Connectors
- Scotch® 130C Tape
- Scotch® 88T Tape
- 3M™ Scotchcast™ 4435 Sheath Scuff

RUS Listed



211

Ordering Information for 3M Scotchcast Closures 89 Series/Re-enterable Encapsulant

Product number	8981 High Gel	8982-4462 High Gel	8983-4462 High Gel	8984-4462 High Gel	8985-4462 High Gel	8986-4462 High Gel
Splice Bundle Diameter mm (in.)	13 (0.5)	23 (0.9)	32 (1.25)	57 (2.25)	88 (3.5)	119 (4.75)
Max. Splice Opening mm (in.)	38 (1.5)	132 (5.25)	244 (9.75)	225 (9.0)	425 (17)	425 (17)
Closure Length End To End mm (in.)	182 (7.2)	273 (10.75)	396 (15.6)	400 (15.75)	622 (24.5)	635 (24.5)
Scotchlok Connector UR2/UR	4-pr.	18-pr.	50-pr.	100-pr.	400-pr.	600-pr.
MS ² ™ 4000 DWP Module Splice Maximum Pair Capacity	–	–	50-pr.	100-pr.	400-pr.	600-pr.
Approx. Compound Included	90 ml (82 grams)	300ml (266 grams)	660 ml (600 grams)	1,320 ml (1,200 grams)	2,640 ml (3,000 grams)	6,600 ml (6,000 grams)
Packaging kgs (lbs.)	1/box 10/cs. 2.9 (6.4)	1/cs. 5.7 (12.5)	1/cs. 10.3 (22.6)	1/cs. 2.1 (4.6)	1/cs. 4.7 (10.3)	1/cs. 9.1 (20.0)
Minimum Order	10 kits	10 kits	10 kits	1 kit	1 kit	1 kit
UPC	051138-36496	051138-36497	051138-36498	051138-36499	051138-36500	051138-36501

Additional products needed to complete this closure: 4458 Pair Save; Scotchlok™, MS²™ or 710 Connectors.

Ordering Information for 8882 Re-enterable Closures

Product Number	UPC
8981-8882	051115-14653
8982-8882	051115-14654
8983-8882	051115-14655
8984-8882	051115-14656
8985-8882	051115-14657
8986-8882	051115-14658

3M™ Scotchcast™ PIC Encapsulating Closure Kits (Non Re-enterable)

of translucent polypropylene and are packed with 4407 Urethane Compound and rubber tape strips for sealing ends of closure.



These rigid body closures are made

212

Ordering Information for 3M™ Scotchcast™ Closures 89 Series/Hard Encapsulant (non re-enterable)

Product Number	8981-07	8982-07	8983-07	8984-07	8985-07	8986-07
Splice Bundle Diameter mm (in.)	13 (0.5)	23 (0.9)	32 (1.25)	57 (2.25)	88 (3.5)	119 (4.75)
Max. Splice Opening mm (in.)	38 (1.5)	132 (5.25)	244 (9.75)	225 (9.0)	425 (17)	425 (17)
Closure Length End To End mm (in.)	182 (7.2)	273 (10.75)	396 (15.6)	400 (15.75)	622 (24.5)	635 (24.5)
Scotchlok Connector UR2/UR	4-pr.	18-pr.	50-pr.	100-pr.	400-pr.	600-pr.
MS ² 4000 DWP Module Splice Maximum Pair Capacity	–	–	–	100-pr.	400-pr.	600-pr.
Approx. Compound Included	90 ml (94 grams)	300ml (300 grams)	660 ml (675 grams)	1,320 ml (1,350 grams)	2,640 ml (3,375 grams)	6,600 ml (6,750 grams)
Packaging kgs (lbs.)	1/box 10/cs. 3.1 (6.8)	1/box 10/cs. 6.2 (13.6)	1/box 10/cs. 11.2 (24.7)	1/cs. 2.1 (4.6)	1/cs. 4.9 (10.7)	1/cs. 9.3 (20.5)
Minimum Order	10 kits	10 kits	10 kits	1 kit	1 kit	1 kit
UPC	054007-30851	054007-30852	054007-30853	054007-33376	054007-33374	054007-30854

Additional products needed to complete this closure: 4458 Pair Saver; Scotchlok, MS² or 710 Connectors; Bonding Strap; Tapes (88T tape, DR tape, B sealing tape strips); Shield Bond Connectors; Sheath-Stuff; Cable Ties.



Kit Contents

4407 Kit	8981	8982	8983	8984	8985	8986
Left and Right Closure Halves	yes	yes	yes	–	–	–
Upper and Lower Closure Halves	–	–	–	yes	yes	yes
Pour Spouts	(2)	(2)	(2)	–	–	–
#23 Tape Strips	(3)	(3)	(3)	(3)	(3)	(3)
Spacer Web	yes	yes	yes	yes	yes	yes
Cover	–	–	–	yes	yes	yes
Fiberglass Strip-Bulk Roll	–	–	–	(2)	(2)	(2)
4407 Encapsulating Compound	yes	yes	yes	yes	yes	yes
4442 Kit	8981	8982	8983	8984	8985	8986
Left and Right Closure Halves	yes	yes	yes	–	–	–
Upper and Lower Closure Halves	–	–	–	yes	yes	yes
4442 Encapsulating Compound	yes	yes	yes	yes	yes	yes
4464 Service Wire Shield Connector	yes	–	–	–	–	–
4460-D Shield Bond Connectors	(2)	yes	yes	(2)	–	–
4462-FN Shield Connectors	–	–	–	–	(4)	(4)
Strain Relief Bar	–	–	–	11.5" (292 mm)	(2) 9.5" (495 mm)	(2) 19.5" (495 mm)
Bonding Strap 6.5" (165 mm)	–	yes	yes	–	–	–
Pour Spouts	(2)	(2)	(2)	–	–	–
#23 Tape Strips	(3)	–	–	–	–	–
DR Tape	–	(1)	(1)	(1)	(1)	(1)
88T Vinyl Tape	–	(1)	(1)	(1)	(1)	(1)
B Sealant Tape Strips	–	(1)	(1)	(2)	(2)	(2)
Spacer Web	yes	yes	yes	yes	yes	yes
Spacer Tube	–	yes	yes	yes	(2)	(2)
Sheath Scuff	–	(1)	(1)	(1)	(1)	(1)
Cable Ties	(2)	(2)	(2)	(2)	(2)	(2)
Cover	–	–	–	yes	yes	yes

3M™ SLiC™ 5-Pair Buried Service Wire Kit

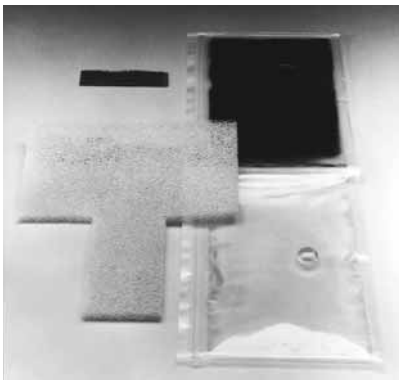


213

Protecting a buried service wire splice is now easier than ever with the SLiC Buried Service Wire Kit. The BSW kit is a three-part, rigid body closure that self-encapsulates two- and five-pair buried service wire. It has a built-in bonding system that bonds the buried service wire shield as the splice is put together—and it contains a revolutionary new sealant.

The special formulated sealant is a one-part, no-mix, non-urethane product containing no grease. The sealant serves as an electrical insulator and reacts upon moisture contact to prevent water ingress. At the point of water incursion, the sealant hardens and forms a water-resistant barrier.

3M™ Scotchcast™ Buried Service Wire Splicing/Cable Capping Kit 3817



214

For buried service wire splicing and end capping. Kit contains T foam spacer pad, 17 compound in “J” size bag, 75 g (2.65 oz.) Unipak container. Packaged in poly bag with instructions.

3M™ Scotchcast Cable Capping Kit 3821



215

Designed specifically for cable capping, this kit includes a clear plastic cup. The 3821 kit accepts a 300-pair 0.6 mm (22 AWG) or 400-pair 0.5 mm (24 AWG).

Also included in the kit is fast curing 17 compound in the Unipak Container. Instructions are provided. 38 mm (1-1/2”) O.D.

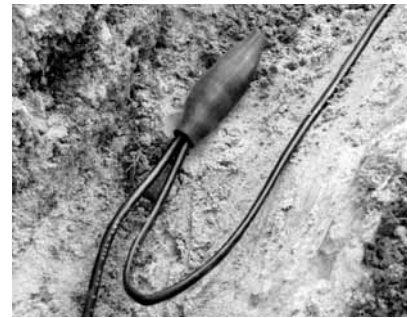
3M™ Scotchcast Buried Service Wire Splice Kit 3832



216

The Scotchcast Buried Service Wire Splice Kit 3832 will accommodate inline and butt splices of up to five-pair filled or unfilled service wire. One “A” size bag of 4403 encapsulant and a split bolt are provided with the kit. Once the compound has been poured, an outer tube is rotated over the barrel opening to seal the unit, requiring no waiting for the compound to cure before the kit is buried.

3M™ PST/Gel Buried Service Wire Splice Kit 3838



217

The 3838 PST/Gel Buried Service Splice Kit is a flexible and “non-compound” splicing system that provides fast, reliable and easy protection. This kit will accommodate inline, butt and extended splices of up to six pair buried service wire. The new kit utilizes non-toxic PST and Gel technology and provides an excellent waterproof environment. It meets tough qualification tests such as impact and pull-out resistance, water immersion and freeze thaw cycle test in wet sand. The shield bond connector is specially designed to provide good electrical continuity and strain relief at the same time.

The 3838 PST/Gel buried service wire kit is simple to use and requires minimal training.



218



Features — Benefits

3838 PST/Gel Buried Service Wire Splice Kit

PST/Gel technology	Proven reliability; waterproof performance saves maintenance costs, keeps lines up and running
Passes freeze/thaw cycle test in wet sand	No return dig-ups; saves repair costs
Used for butt and in-line splicing	Addresses multiple splicing configurations; reduces inventory hassles and costs
No encapsulant mixing	Reduces installation time and reduces waste
Universal sizing, "push type" strain relief and shield connector	Fits all needs; inventory savings. No special tools required; no tooling costs
Fewer piece parts	Fast assembly; reduced labor
No compound	No curing time; can be buried immediately
Easy installation	Craft friendly with minimal training
Applicable in extreme temperatures	No scheduling or weather constraints

Ordering Information for Buried Service Wire and End Capping Kits



Product Number		Packaging kg (lbs.)/cs.	Min. Order	UPC
SLIC™ 5-pair	Buried Service Wire Kit	1 kit/bag, 12 kits/cs. 2.3 (5.0)	12 kits	054007-71531
3817	Buried Service Wire Splicing/Cable Capping Kit 38.100 mm (1 1/2"), O.D.	1 kit/bag, 12 cs. 1.45 (3.2)	12 kits	054007-32217
3832	Buried Service Wire Splice Kit with Split Bolt	1/bag, 12/cs. 1.9 (4.2)	12 kits	054007-32224
3821	Cable Capping Kit 22.225 mm + 38.100 mm (7/8" + 1 1/2") O.D.	1/bag, 12/cs. 1.7 (3.8)	12 kits	054007-32220
3838 includes the following:	PST/Gel Buried Service Wire Splice Kit Gel Blanket (1) 4360 Pull 'N' Shrink Tubing (1) 4463 Shield Bond Assembly (1) 23 Tape Strip (1)	1 kit/1 box (.625 lbs)	1 kit	054007-11455