



Chipsmall Limited consists of a professional team with an average of over 10 year of expertise in the distribution of electronic components. Based in Hongkong, we have already established firm and mutual-benefit business relationships with customers from,Europe,America and south Asia,supplying obsolete and hard-to-find components to meet their specific needs.

With the principle of "Quality Parts,Customers Priority,Honest Operation,and Considerate Service",our business mainly focus on the distribution of electronic components. Line cards we deal with include Microchip,ALPS,ROHM,Xilinx,Pulse,ON,Everlight and Freescale. Main products comprise IC,Modules,Potentiometer,IC Socket,Relay,Connector.Our parts cover such applications as commercial,industrial, and automotives areas.

We are looking forward to setting up business relationship with you and hope to provide you with the best service and solution. Let us make a better world for our industry!



Contact us

Tel: +86-755-8981 8866 Fax: +86-755-8427 6832

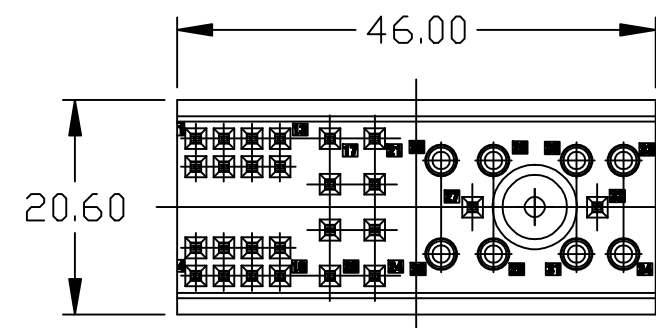
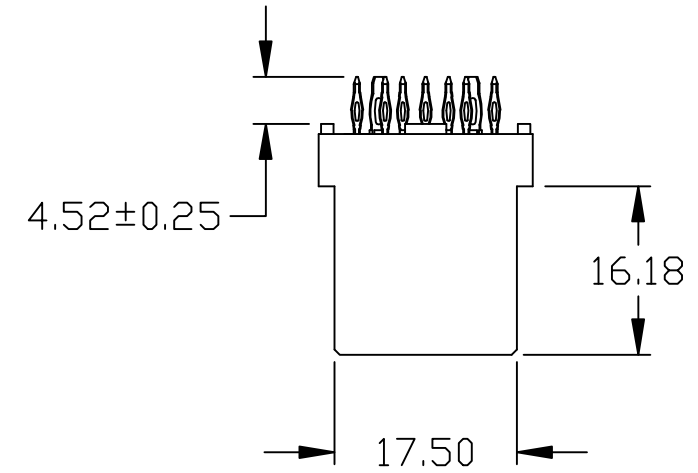
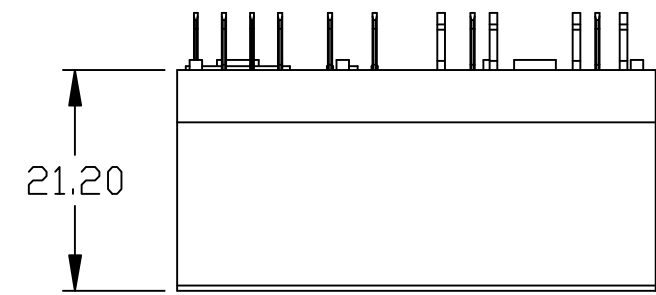
Email & Skype: info@chipsmall.com Web: www.chipsmall.com

Address: A1208, Overseas Decoration Building, #122 Zhenhua RD., Futian, Shenzhen, China



3M™ POWER BACKPLANE FEMALE CONNECTOR FOR ATCA APPLICATIONS

- NOTES:
- MATERIALS AND FINISH:
INSULATOR: GLASS FILLED POLYESTER (PBT) UL94V-0
CONTACTS: COPPER ALLOY
 - PLATING:
-ES
FINISH: 0.76um MIN Au
UNDERCOAT: 1.27um MIN Ni
-G
FINISH: 0.25um MIN Au
UNDERCOAT: 1.27um MIN Ni
-DA
FINISH: 0.08um MIN Au
UNDERCOAT: 1.27um MIN Ni
 - ELECTRICAL CHARACTERISTICS
INSULATION RESISTANCE --- 5×10^9 OHMS
INITIAL CONTACT RESISTANCE
POWER CONTACT ----- 2.2 MILLIOHMS MAX
SIGNAL CONTACT ----- 8.5 MILLIOHMS MAX
VOLTAGE PROOF
PIN 1-16: 1000 VR.M.S
PIN 17-34: 2000 VR.M.S
CURRENT CARRYING CAPACITY
SIGNAL PINS: 1A
POWER PINS: 16A



- SEE THE REGULATORY INFORMATION APPENDIX (RIA) IN THE "RoHS COMPLIANCE" SECTION OF: WWW.3MCONNECTOR.COM FOR COMPLIANCE INFORMATION (RIA E1 & C1 APPLY).
- REFERENCE DOCUMENT: 78-9101-3345-9
- IN THE EVENT OF CONFLICT BETWEEN THIS DATA AND THAT CONTAINED IN THE PRODUCT SPEC., THE PRODUCT SPEC. TAKES PRECEDENT.

7. PART No:

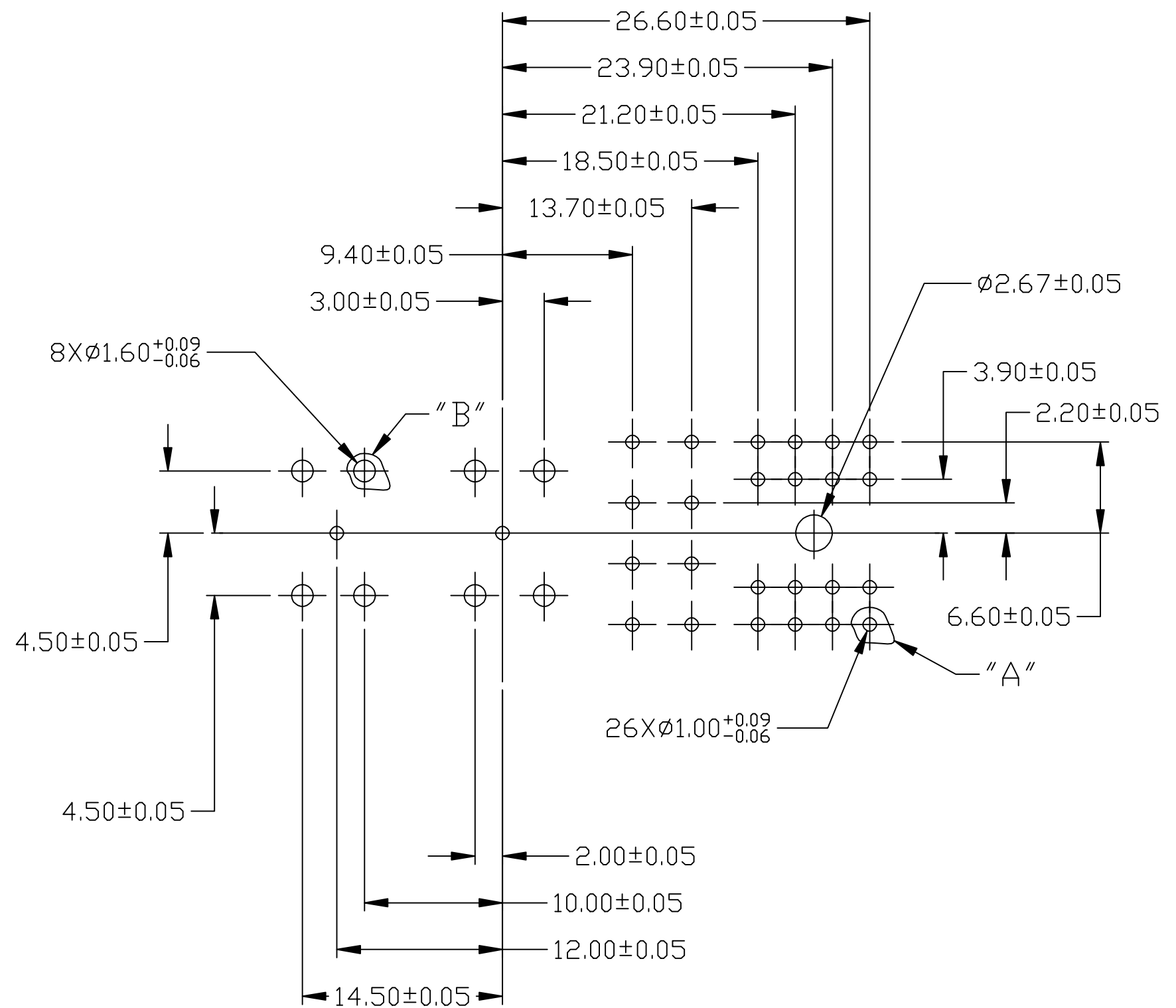
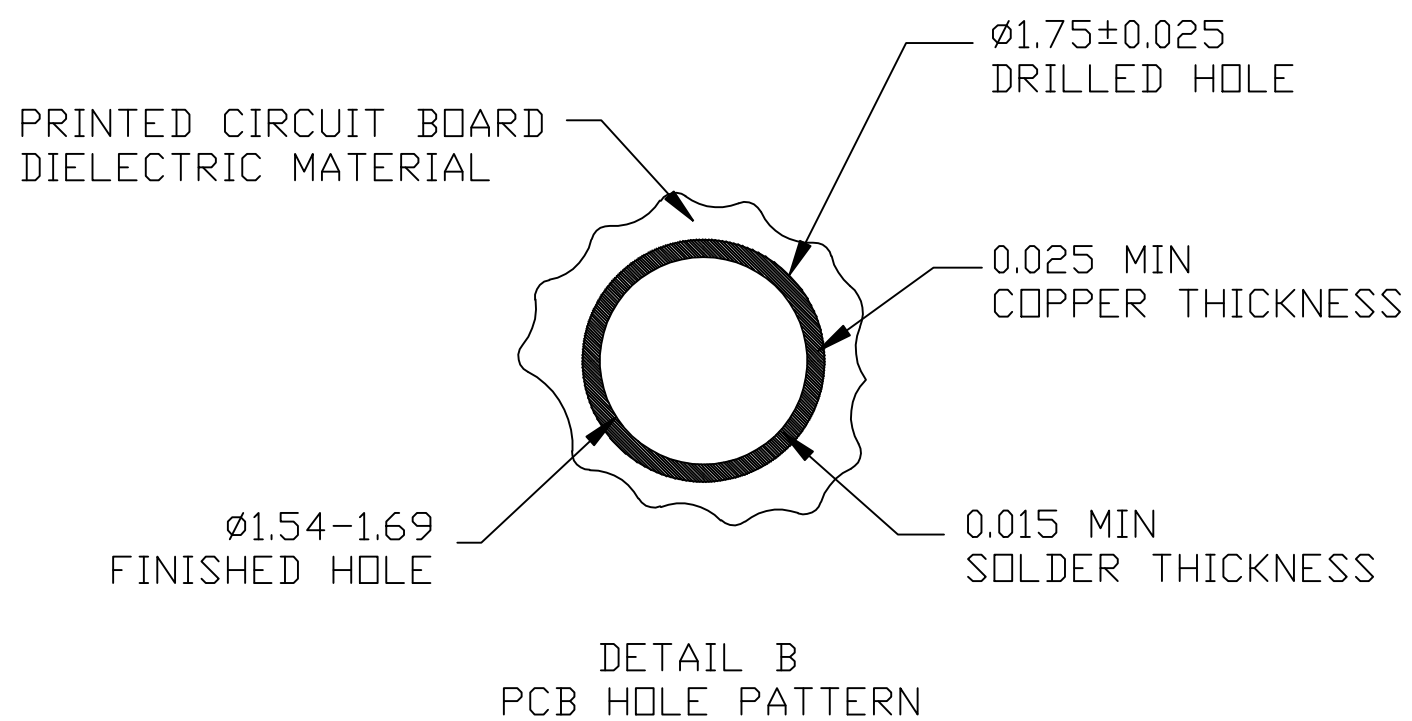
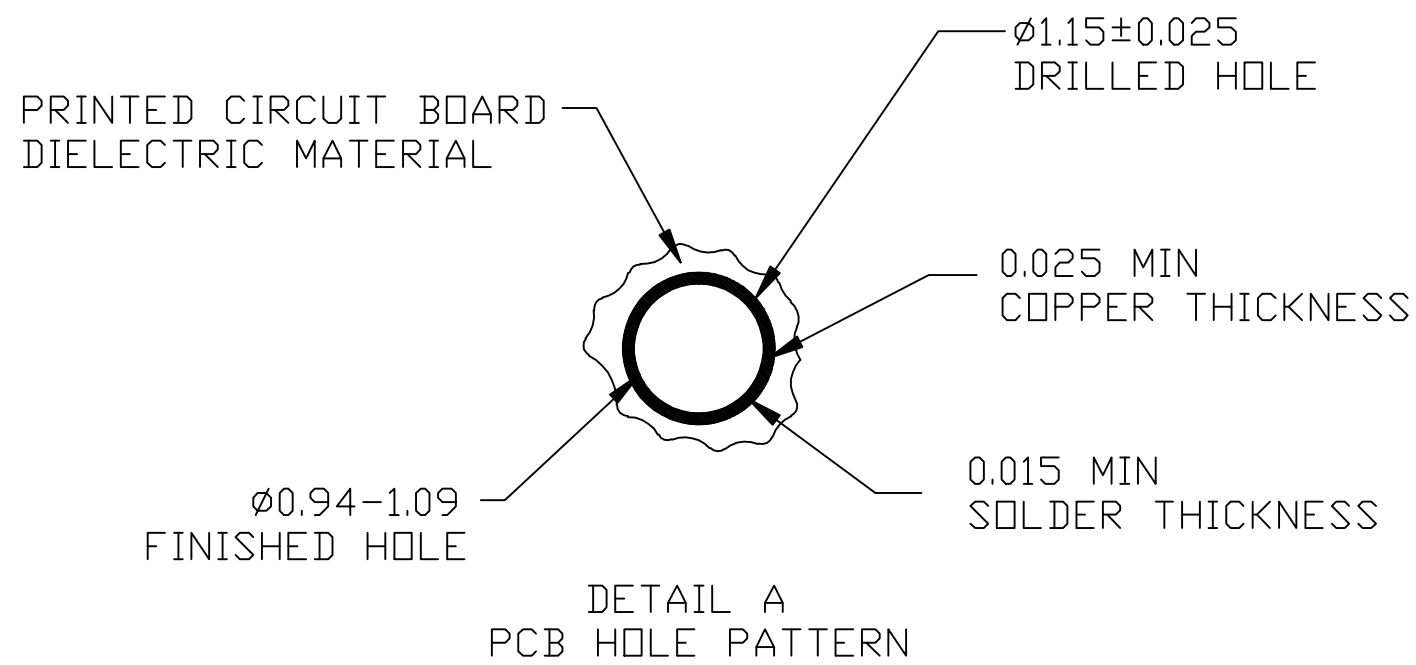
PART DESCRIPTION	CONTACT POSITIONS
2P02-0100-XX	34
2P02-0200-XX	30, EXCEPT POSITIONS 1-4
2P02-0300-XX	22, EXCEPT POSITIONS 1-4, 17-24

-XX IS PLATING TYPE

- FOR MATING PRODUCT USE:
2P01-0X00-XX ATCA POWER RIGHT ANGLE MALE CONNECTOR
- PCB THICKNESS: MINIMUM:2.00MM
MAXIMUM:5.00MM

DESIGN REFERENCE	NEXT ASSEMBLY	REV	ECO	ISSUE DATE AND DESCRIPTION	DRFT	CHKD
DISTRIBUTION CODES		DRFT	Peter	DATE 12/8'06	MFG	DATE
		CHKD	Seawen	DATE 12/8'06	APPL	DATE
DIVISION	DIVISION CODE	3M 3M Center St. Paul, MN 55144		© 3M COPYRIGHT This document is the copyrighted property of the 3M Company and may not be reproduced without 3M written permission or used for other than 3M authorized purposes.		
DO NOT SCALE DRAWING	SCALE	TOLERANCES EXCEPT AS NOTED	TITLE 2P02-0X00-XX ATCA POWER BACKPLANE CONNECTOR			
		INCHES .0 ± * .00 ± * .000 ± * .0000 ± *	CAGE NUMBER C DRAWING NO. 78-5100-2378-7 REV. A			
THIRD ANGLE PROJECTION		MILLIMETERS 0 ± * .0 ± 0.30 .00 ± 0.20 .000 ± 0.10	MODEL			
INTERPRET PER ASME Y14.5 - 1994		ANGLES ± 1'	DET. LISTS <input type="checkbox"/> YES <input type="checkbox"/> NO SHT 1 OF 2			
MAX SURFACE ROUGHNESS <input type="checkbox"/> ALL SURFACES <input checked="" type="checkbox"/> MARKED ONLY						

3M™ POWER BACKPLANE FEMALE CONNECTOR FOR ATCA APPLICATIONS



RECOMMENDED PC BOARD REQUIREMENTS
(COMPONENT SIDE OF BOARD SHOWN)

DESIGN REFERENCE	NEXT ASSEMBLY	REV	ECO	ISSUE DATE AND DESCRIPTION	DRFT	CHKD
DISTRIBUTION CODES		DRFT	Peter	DATE 12/8'06	MFG	DATE
		CHKD	Seawen	DATE 12/8'06	APPL	DATE
DIVISION	DIVISION CODE	3M 3M Center St. Paul, MN 55144		© 3M COPYRIGHT This document is the copyrighted property of the 3M Company and may not be reproduced without 3M written permission or used for other than 3M authorized purposes.		
DO NOT SCALE DRAWING	SCALE	TOLERANCES EXCEPT AS NOTED		TITLE 2P02-0X00-XX ATCA POWER BACKPLANE CONNECTOR		
THIRD ANGLE PROJECTION	INTERPRET PER ASME Y14.5 - 1994	INCHES .0 ± * .00 ± * .000 ± * .0000 ± *		DRAWING NO. 78-5100-2378-7		
MAX SURFACE ROUGHNESS	✓ <input type="checkbox"/> ALL SURFACES <input type="checkbox"/> MARKED ONLY	MILLIMETERS 0 ± * .0 ± 0.30 .00 ± 0.20 .000 ± 0.10		CAGE NUMBER	SIZE	REV. A
		ANGLES ± 1'		MODEL	DET. LISTS	<input type="checkbox"/> YES <input type="checkbox"/> NO SHT 2 OF 2