



Chipsmall Limited consists of a professional team with an average of over 10 year of expertise in the distribution of electronic components. Based in Hongkong, we have already established firm and mutual-benefit business relationships with customers from,Europe,America and south Asia,supplying obsolete and hard-to-find components to meet their specific needs.

With the principle of “Quality Parts,Customers Priority,Honest Operation,and Considerate Service”,our business mainly focus on the distribution of electronic components. Line cards we deal with include Microchip,ALPS,ROHM,Xilinx,Pulse,ON,Everlight and Freescale. Main products comprise IC,Modules,Potentiometer,IC Socket,Relay,Connector.Our parts cover such applications as commercial,industrial, and automotives areas.

We are looking forward to setting up business relationship with you and hope to provide you with the best service and solution. Let us make a better world for our industry!



## Contact us

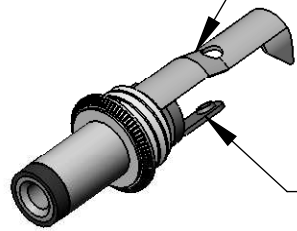
Tel: +86-755-8981 8866 Fax: +86-755-8427 6832

Email & Skype: [info@chipsmall.com](mailto:info@chipsmall.com) Web: [www.chipsmall.com](http://www.chipsmall.com)

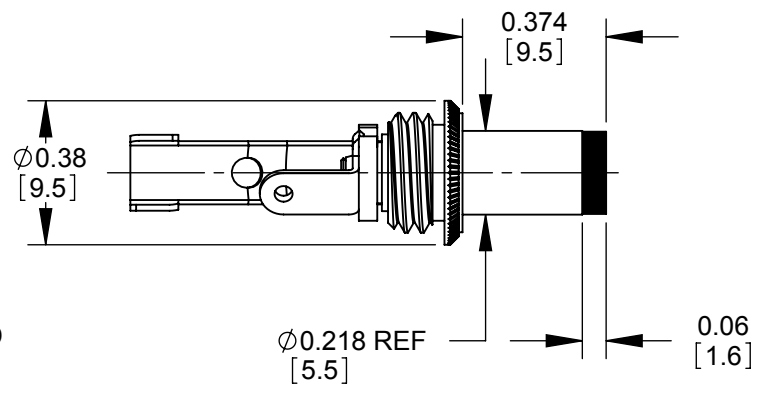
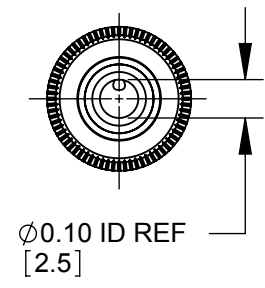
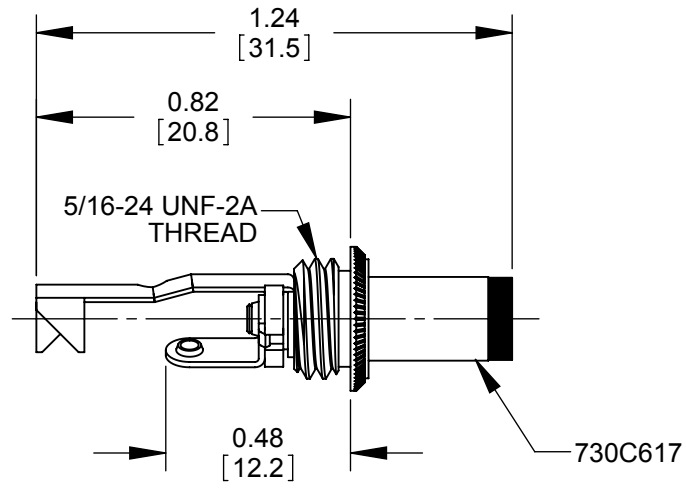
Address: A1208, Overseas Decoration Building, #122 Zhenhua RD., Futian, Shenzhen, China



SLEEVE TERMINAL  
CABLE CLAMP



TIP TERMINAL



NOTES:

1. MATERIALS:  
CONDUCTORS -COPPER ALLOY, NICKEL PLATED  
TERMINALS - COPPER ALLOY, TIN PLATED  
INSULATORS - THERMOPLASTIC
2. THIS PRODUCT IS RoHS COMPLIANT

**CUSTOMER DRAWING**

						THIS DRAWING DESCRIBES A DESIGN CONSIDERED PROPRIETARY IN NATURE, DEVELOPED AND MANUFACTURED BY SWITCHCRAFT INC. AND IS RELEASED ON A CONFIDENTIAL BASIS FOR IDENTIFICATION PURPOSES ONLY.													
					UNLESS OTHERWISE SPECIFIED  1. ALL DIMENSIONS IN INCHES  - TWO PLACE DECIMALS     ±0.02  - THREE PLACE DECIMALS    ±0.005	SIZE		WIDTH		MULT		LBS/M		TEMPER					
						FINISH SPEC No.						MATERIAL SPEC No.							
						FIRST USED ON				SCALE 2:1				Switchcraft®					
						DATE DRAWN 12-17-01		BY JL	CHKD EB 12-17-07		APVD EB 12-17-07								
D	CAD REDRAW 26679	01-07-11	JEB	TJK		SHEET    1                      OF    1													
REV	ECO NUMBER	DATE	BY	APVD															
REVISIONS					DO NOT SCALE DRAWING	NAME    Ø 0.10 [2.5]mm 0.374 LONG POWER PLUG, RoHS						PART No.  2P1515						REV  D	

SolidWorks CAD File

