



Chipsmall Limited consists of a professional team with an average of over 10 year of expertise in the distribution of electronic components. Based in Hongkong, we have already established firm and mutual-benefit business relationships with customers from,Europe,America and south Asia,supplying obsolete and hard-to-find components to meet their specific needs.

With the principle of “Quality Parts,Customers Priority,Honest Operation,and Considerate Service”,our business mainly focus on the distribution of electronic components. Line cards we deal with include Microchip,ALPS,ROHM,Xilinx,Pulse,ON,Everlight and Freescale. Main products comprise IC,Modules,Potentiometer,IC Socket,Relay,Connector.Our parts cover such applications as commercial,industrial, and automotives areas.

We are looking forward to setting up business relationship with you and hope to provide you with the best service and solution. Let us make a better world for our industry!



Contact us

Tel: +86-755-8981 8866 Fax: +86-755-8427 6832

Email & Skype: info@chipsmall.com Web: www.chipsmall.com

Address: A1208, Overseas Decoration Building, #122 Zhenhua RD., Futian, Shenzhen, China



**MICRO SWITCH**FREEPORT, ILLINOIS, U.S.A.
A DIVISION OF HONEYWELL

FED. MFG. CODE 91929

**ASSEMBLY-
PUSHBUTTON SWITCH**

CATALOG LISTING

2PB43**2PB43**

PAGE 1 OF 1

MDRAWING
NUMBER

6

ISSUE

REPLACES

RELEASE NO.

CHECK

CHECK

APR 65

LSD

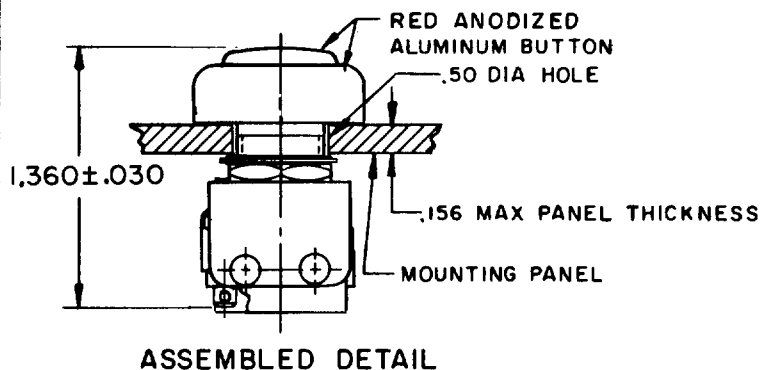
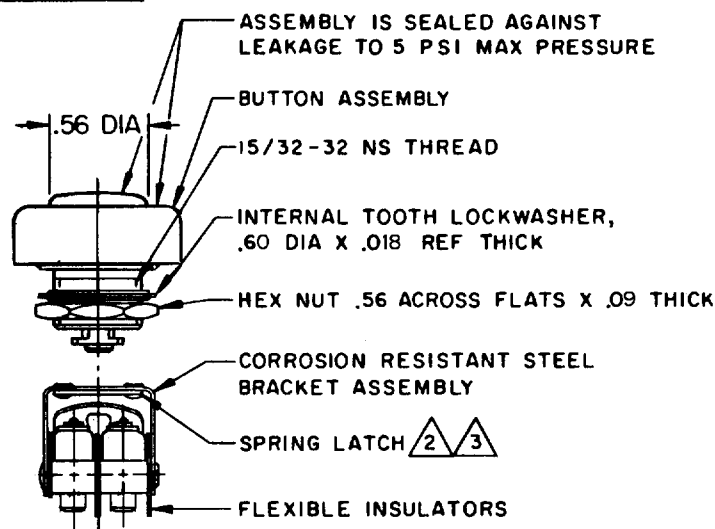
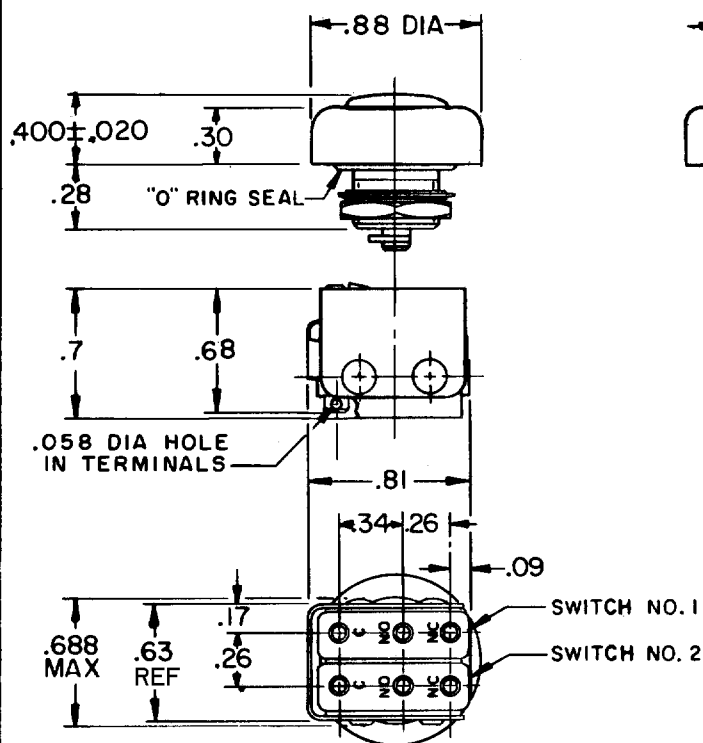
CHECK

M B F 2 APR 65

FORMTEK

FO-30378

DRAWN

**ASSEMBLED DETAIL****NOTES**

- 1 - UNIT INCLUDES CATALOG LISTING "ISM" TYPE BASIC SWITCH (2)
- 2 SPRING LATCH PERMITS ASSEMBLY AND DISASSEMBLY AS REQUIRED
- 3 "D" SHAPED HOLE IN SPRING LATCH PREVENTS ROTATION BETWEEN THE TWO PARTS
- 4 - ASSEMBLY IS COMPLETED AFTER INSTALLING BUTTON TO PANEL
- 5 - SWITCHES DO NOT NECESSARILY OPERATE SIMULTANEOUSLY
- 6 - TERMINALS ARE PLATED FOR SOLDERING

THIS DRAWING COVERS A PROPRIETARY ITEM AND IS THE PROPERTY OF MICRO SWITCH, A DIVISION OF HONEYWELL. THIS DRAWING IS NOT TO BE COPIED OR USED WITHOUT THE APPROVAL OF MICRO SWITCH.

CHARACTERISTICSOPERATING FORCE -- 2 1/2 LB APPROX
PLUNGER TRAVEL -- .062 APPROX**ELECTRICAL DATA****CONTACT ARRANGEMENT
S P D T (2)**

250 VAC	---	5 AMP
30 VOLTS DC RATING		
INDUCTIVE	---	SEA LEVEL --- 3 AMP
	---	50,000 FT --- 2.5 AMP
RESISTIVE	---	SEA LEVEL --- 5 AMP
	---	50,000 FT --- 5 AMP
MAXIMUM INRUSH	---	24 AMP

SCALE FULL**DO NOT SCALE PRINT****UNLESS OTHERWISE
NOTED**

DIMENSIONS ARE IN INCHES

TOLERANCES ARE:

ONE PLACE	(.0)	±.030
TWO PLACE	(.00)	±.015
THREE PLACE	(.000)	±.005
ANGLES		±

WEIGHT