



Chipsmall Limited consists of a professional team with an average of over 10 year of expertise in the distribution of electronic components. Based in Hongkong, we have already established firm and mutual-benefit business relationships with customers from,Europe,America and south Asia,supplying obsolete and hard-to-find components to meet their specific needs.

With the principle of “Quality Parts,Customers Priority,Honest Operation,and Considerate Service”,our business mainly focus on the distribution of electronic components. Line cards we deal with include Microchip,ALPS,ROHM,Xilinx,Pulse,ON,Everlight and Freescale. Main products comprise IC,Modules,Potentiometer,IC Socket,Relay,Connector.Our parts cover such applications as commercial,industrial, and automotives areas.

We are looking forward to setting up business relationship with you and hope to provide you with the best service and solution. Let us make a better world for our industry!



Contact us

Tel: +86-755-8981 8866 Fax: +86-755-8427 6832

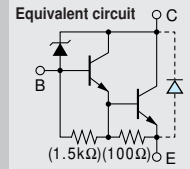
Email & Skype: info@chipsmall.com Web: www.chipsmall.com

Address: A1208, Overseas Decoration Building, #122 Zhenhua RD., Futian, Shenzhen, China



**Built-in Avalanche Diode
for Surge Absorbing
Darlington**

2SD2141



Silicon NPN Triple Diffused Planar Transistor

Application : Ignitor, Driver for Solenoid and Motor, and General Purpose

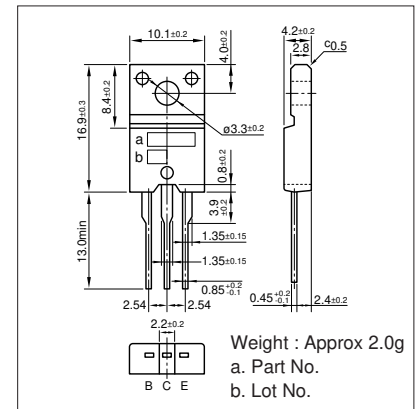
Absolute maximum ratings (Ta=25°C)

Symbol	Ratings	Unit
VcBO	380±50	V
VCEO	380±50	V
VEBO	6	V
Ic	6(Pulse10)	A
Ib	1	A
Pc	35(Tc=25°C)	W
Tj	150	°C
Tstg	-55 to +150	°C

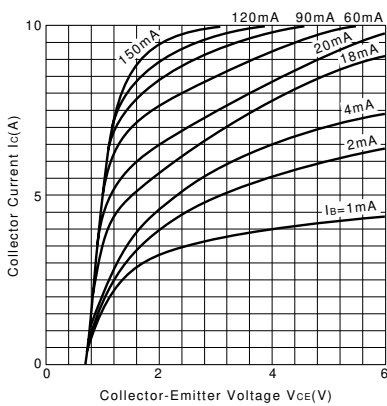
Electrical Characteristics (Ta=25°C)

Symbol	Conditions	Ratings	Unit
IcBO	VcB=330V	10max	μA
IEBO	VEB=6V	20max	mA
V(BR)CEO	Ic=25mA	330 to 430	V
hFE	VCE=2V, Ic=3A	1500min	
VCE(sat)	Ic=4A, Ib=20mA	1.5max	V
fT	VCE=12V, IE=-0.5A	20typ	MHz
COB	VcB=10V, f=1MHz	95typ	pF

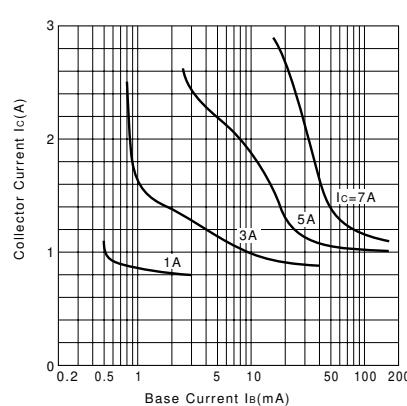
External Dimensions FM20(TO220F)



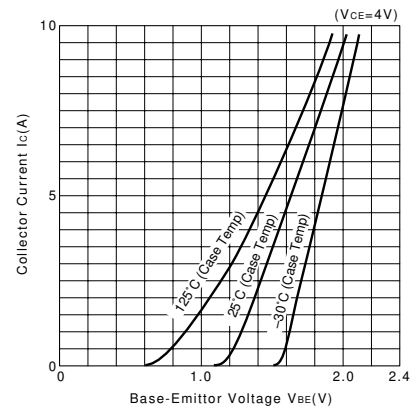
Ic-VCE Characteristics (Typical)



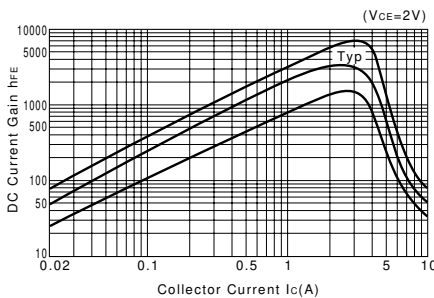
VCE(sat)-Ib Characteristics (Typical)



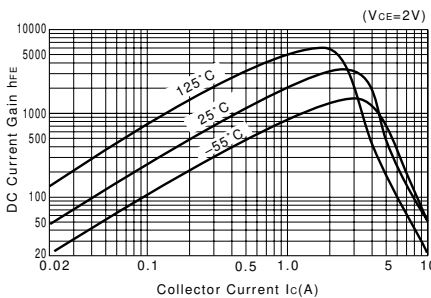
Ic-VBE Temperature Characteristics (Typical)



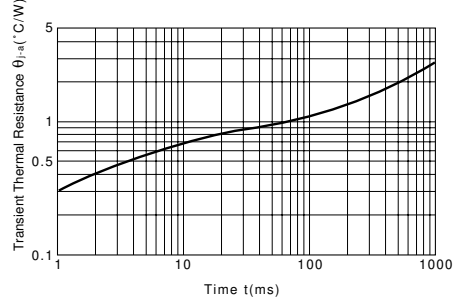
hFE-Ic Characteristics (Typical)



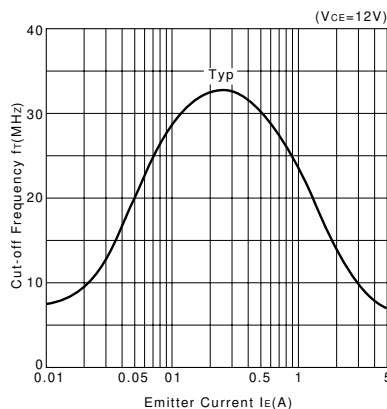
hFE-Ic Temperature Characteristics (Typical)



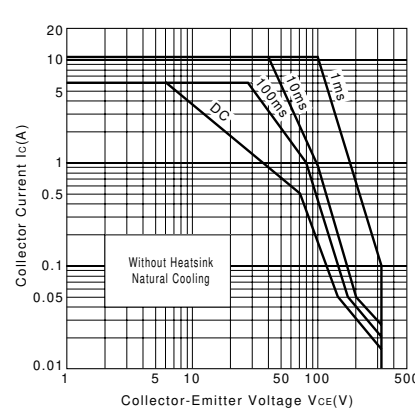
θj-a-t Characteristics



fT-IE Characteristics (Typical)



Safe Operating Area (Single Pulse)



Pc-Ta Derating

