



Chipsmall Limited consists of a professional team with an average of over 10 year of expertise in the distribution of electronic components. Based in Hongkong, we have already established firm and mutual-benefit business relationships with customers from,Europe,America and south Asia,supplying obsolete and hard-to-find components to meet their specific needs.

With the principle of “Quality Parts,Customers Priority,Honest Operation,and Considerate Service”,our business mainly focus on the distribution of electronic components. Line cards we deal with include Microchip,ALPS,ROHM,Xilinx,Pulse,ON,Everlight and Freescale. Main products comprise IC,Modules,Potentiometer,IC Socket,Relay,Connector.Our parts cover such applications as commercial,industrial, and automotives areas.

We are looking forward to setting up business relationship with you and hope to provide you with the best service and solution. Let us make a better world for our industry!



Contact us

Tel: +86-755-8981 8866 Fax: +86-755-8427 6832

Email & Skype: info@chipsmall.com Web: www.chipsmall.com

Address: A1208, Overseas Decoration Building, #122 Zhenhua RD., Futian, Shenzhen, China



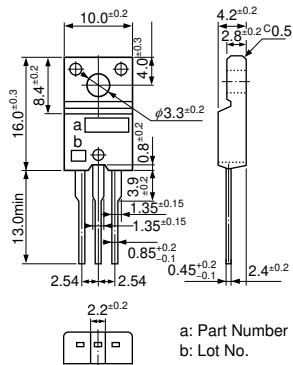
Specifications List by Part Number

Part Number	Absolute Maximum Ratings						I _{GSS}		I _{BSS}		V _{TH}				
	V _{DSS} (V)	V _{GSS} (V)	I _D (A)	I _{D (pulse)} (A)	P _D (W)	E _{AS} (mJ)	Conditions V _{GS} (V)	Conditions V _{DS} (V)	min	max	min	max	Conditions		
													V _{DS} (V)	I _D (μ A)	
							(nA)	(μ A)							
						max									
2SK2420	60	± 20	± 30	± 120	40	38	± 100	± 20		100	60	2.0	4.0	10	250
→ 2SK2701A	450	± 30	± 7	± 28	35	130	± 100	± 30		100	450	2.0	4.0	10	1m
2SK2803	450	± 30	± 3	± 12	30	30	± 100	± 30		100	450	2.0	4.0	10	1m
2SK2848	600	± 30	± 2	± 8	30	10	± 100	± 30		100	600	2.0	4.0	10	250
2SK2943	900	± 30	± 3	± 12	30	60	± 100	± 30		100	900	2.0	4.0	10	1m
2SK3003	200	± 20	± 18	± 72	35	120	± 100	± 20		100	200	2.0	4.0	10	1m
2SK3004	250	± 20	± 18	± 72	35	120	± 100	± 20		100	250	2.0	4.0	10	1m
2SK3199	500	± 30	± 5	± 20	30	35	± 100	± 30		100	500	2.0	4.0	10	1m
2SK3710	60	± 20	± 70	± 140	90	468	$\pm 10\mu$	± 15		100	60	2.0	4.0	10	1m
2SK3711	60	± 20	± 70	± 140	130		$\pm 10\mu$	± 15		100	60	2.0	4.0	10	1m
2SK3800	40	± 20	± 70	± 140	80	400	± 10	± 15		100	40	2.0	4.0	10	1m
2SK3801	40	± 20	± 70	± 140	100	400	± 10	± 15		100	40	2.0	4.0	10	1m
EKV550	50	± 20	± 50	± 150	85	150	$\pm 10\mu$	± 20		100	50	3.0	4.2	10	250
FKP202	200	± 30	± 45	± 180	40	200	± 100	± 30		100	200	3.0	4.5	10	1m
FKP250A	250	± 30	± 50	± 200	85	400	± 100	± 30		100	250	3.0	4.5	10	1m
FKP252	250	± 30	± 25	± 100	40	200	± 100	± 30		100	250	3.0	4.5	10	1m
FKP253	250	± 30	± 20	± 80	40	160	± 100	± 30		100	250	3.0	4.5	10	1m
FKP280A	280	± 30	± 40	± 160	85	400	± 100	± 30		100	280	3.0	4.5	10	1m
FKP300A	300	± 30	± 30	± 120	85	400	± 100	± 30		100	300	3.0	4.5	10	1m
FKP330C	330	± 30	± 30	± 120	85	500	± 100	± 30		100	330	3.0	4.5	10	1m
FKV460S	40	+20, -10	± 60	± 180	60		+10, -5 μ	+20, -10		100	40	1.0	2.5	10	250
FKV550T	50	± 20	± 50	± 150	35	150	$\pm 10\mu$	± 20		100	50	1.0	2.5	10	250
FKV550N	50	± 20	± 50	± 150	35	150	$\pm 10\mu$	± 20		100	50	3.0	4.2	10	250
FKV575	50	± 20	± 75	± 200	40	300	± 100	± 20		100	50	3.0	4.5	10	250
FKV660S	60	+20, -10	± 60	± 180	60		+10, -5 μ	+20, -10		100	60	1.0	2.5	10	250
SKP202	200	± 30	± 45	± 180	95	200	± 100	± 30		100	200	3.0	4.5	10	1m
SKP253	250	± 30	± 20	± 80	40	160	± 100	± 30		100	250	3.0	4.5	10	1m

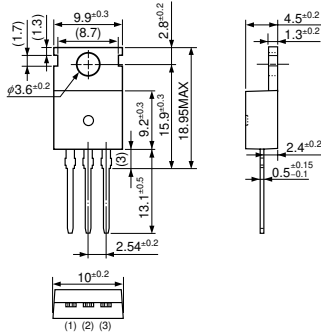
Electrical Characteristics																Package	Mass (g)
R _e (y/s)		Conditions		C _{iss} (pF)	C _{rss} (pF)	Conditions		R _{DS(ON)}									
								(S)		(Ω)		Conditions		Conditions			
min	typ	V _{DS} (V)	I _D (A)	typ	typ	V _{GS} (V)	V _{DS} (V)	typ	max	V _{GS} (V)	I _D (A)	typ	max	V _{GS} (V)	I _D (A)		
13	20	10	15	2200		0	25	21m	28m	10	15					TO220F(FM20)	2.0
3.5	5	20	3.5	720	62	0	10	0.84	1.1	10	3.5					TO220F(FM20)	2.0
1.5	2.1	20	1.5	340	26	0	10	2.1	2.8	10	1.5					TO220F(FM20)	2.0
1.2	1.7	20	1	290	30	0	10	3	3.8	10	1					TO220F(FM20)	2.0
1.8	2.8	20	1.5	600	40	0	10	4	5	10	1.5					TO220F(FM20)	2.0
7	11	10	9	850	250	0	10	130m	175m	10	9					TO220F(FM20)	2.0
7	11	10	9	850	250	0	10	0.2	0.25	10	9					TO220F(FM20)	2.0
3.5	5.2	20	2.5	650	110	0	10	1.2	1.5	10	2.5					TO220F(FM20)	2.0
30	80	10	35	8000	1000	0	10	5m	6m	10	35					TO220S(Surface-mount)	1.5
30	80	10	35	8000	1000	0	10	5m	6m	10	35					TO3P(MT100)	6.0
30	50	10	35	5100	860	0	10	5m	6m	10	35					TO220S(Surface-mount)	1.5
30	50	10	35	5100	860	0	10	5m	6m	10	35					TO3P(MT100)	6.0
17		10	25	2000	500	0	10	12m	15m	10	25					TO220	2.0
18	28	10	22	2000	80	0	25	45m	53m	10	22					TO220F(FM20)	2.0
30	42	10	25	3800	210	0	25	37m	43m	10	25					TO3PF(FM100)	6.5
13	21	10	12	2000	70	0	25	68m	75m	10	12					TO220F(FM20)	2.0
8	17	10	10	1600	50	0	25	86m	95m	10	10					TO220F(FM20)	2.0
25	38	10	20	3800	190	0	25	46m	53m	10	20					TO3PF(FM100)	6.5
20	33	10	15	3800	180	0	25	57m	65m	10	15					TO3PF(FM100)	6.5
23	37	10	15	4600	220	0	25	50m	63m	10	15					TO3PF(FM100)	6.5
20		10	25	2800	600	0	10	7m	9m	10	25					TO220S(Surface-mount)	1.5
20		10	25	2700	500	0	10	10m	13m	10	25					TO220F(FM20)	2.0
17		10	25	2000	500	0	10	12m	15m	10	25					TO220F(FM20)	2.0
30		10	37	3200	750	0	10	7m	10m	10	37					TO220F(FM20)	2.0
20		10	25	2500	150	0	10	11m	14m	10	25					TO220S(Surface-mount)	1.5
18	28	10	22	2000	80	0	25	45m	53m	10	22					TO263(Surface-mount)	1.5
8	17	10	10	1600	50	0	25	86m	95m	10	10					TO263(Surface-mount)	1.5

Package Type (Dimensions)

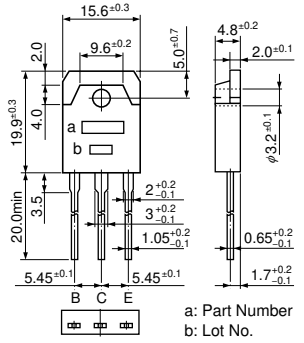
• TO-220F (FM20)



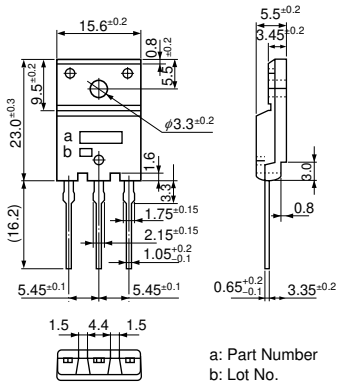
• TO-220 (MT-25)



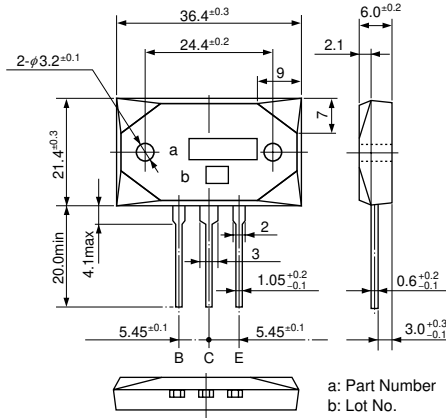
• TO-3P (MT-100)



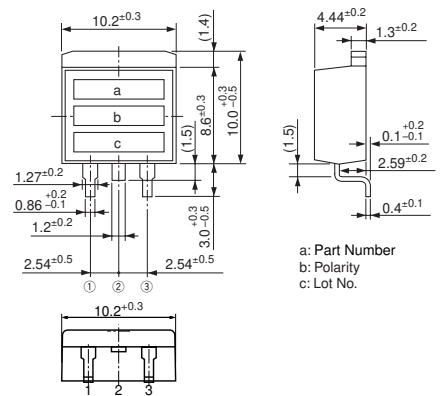
• TO-3PF (FM100)



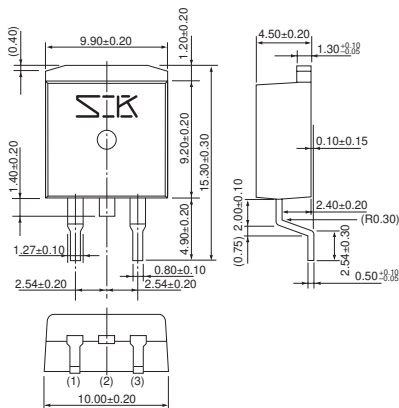
• MT-200



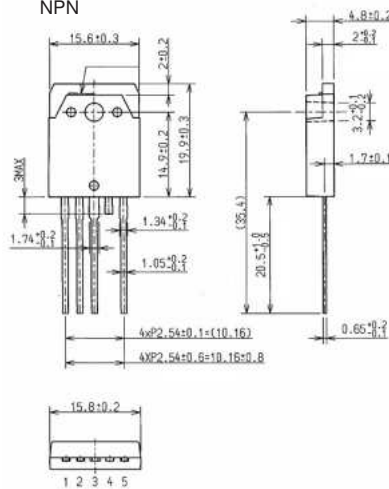
• TO-220S



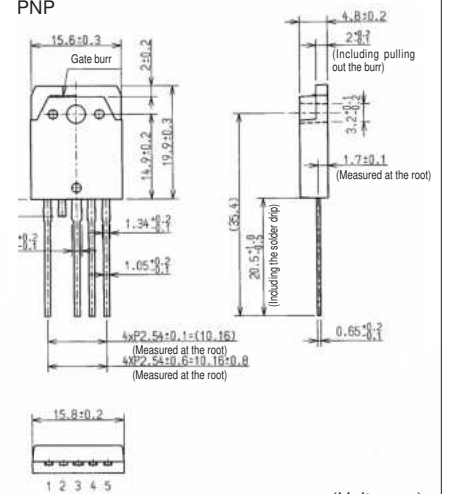
• TO-263



• TO3P-5Pin
NPN



PNP



(Unit : mm)