



Chipsmall Limited consists of a professional team with an average of over 10 year of expertise in the distribution of electronic components. Based in Hongkong, we have already established firm and mutual-benefit business relationships with customers from,Europe,America and south Asia,supplying obsolete and hard-to-find components to meet their specific needs.

With the principle of "Quality Parts,Customers Priority,Honest Operation,and Considerate Service",our business mainly focus on the distribution of electronic components. Line cards we deal with include Microchip,ALPS,ROHM,Xilinx,Pulse,ON,Everlight and Freescale. Main products comprise IC,Modules,Potentiometer,IC Socket,Relay,Connector.Our parts cover such applications as commercial,industrial, and automotives areas.

We are looking forward to setting up business relationship with you and hope to provide you with the best service and solution. Let us make a better world for our industry!



Contact us

Tel: +86-755-8981 8866 Fax: +86-755-8427 6832

Email & Skype: info@chipsmall.com Web: www.chipsmall.com

Address: A1208, Overseas Decoration Building, #122 Zhenhua RD., Futian, Shenzhen, China



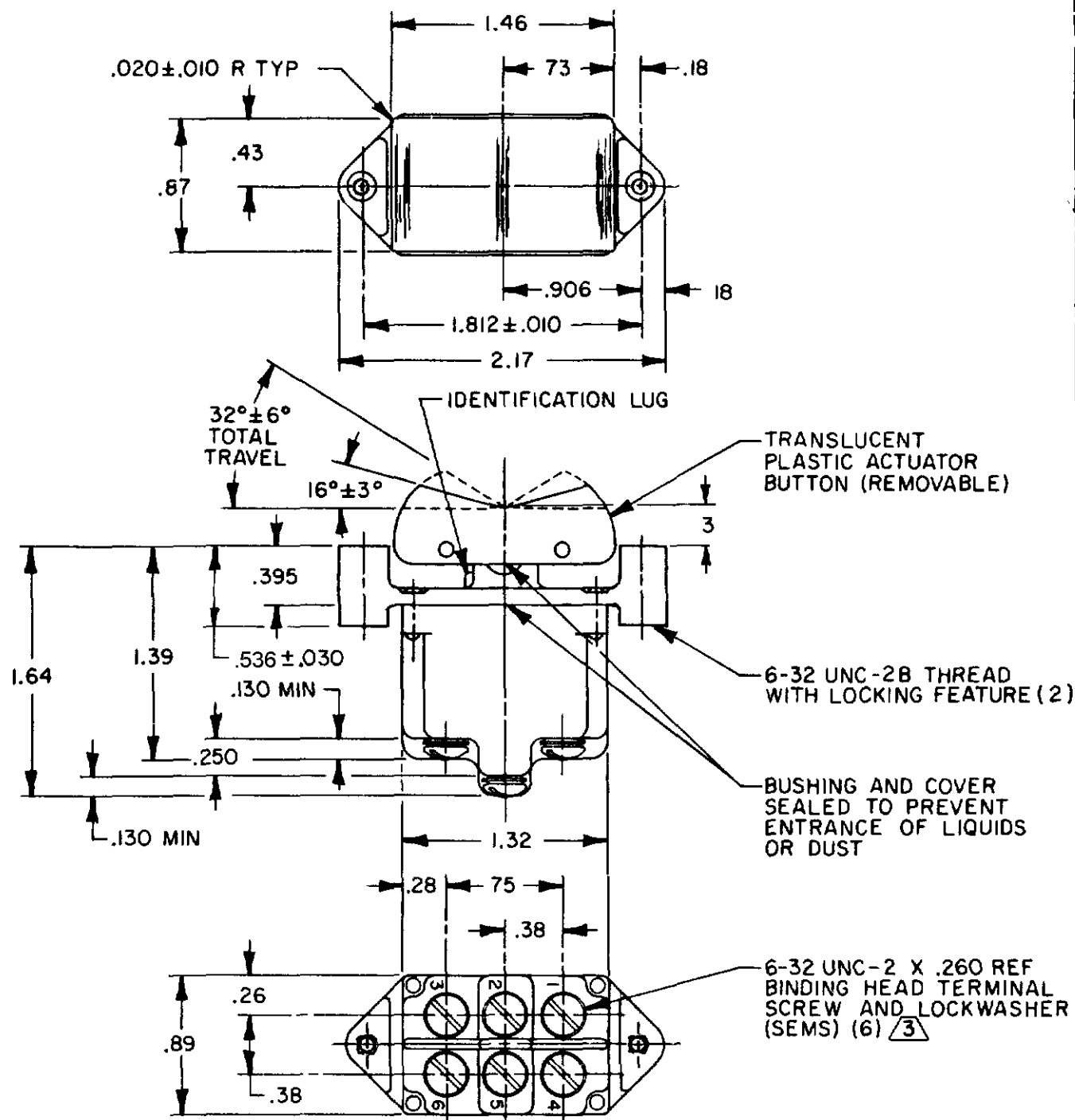
MICRO SWITCH
 FREEPORT ILLINOIS U S A
 A DIVISION OF HONEYWELL
 FED MFG CODE 9183E

**SWITCH - TOGGLE
 FLUSH KEY**

CATALOG LISTING
2TPI SERIES
 CHART 1

THIS DRAWING COVERS A PROPRIETARY ITEM AND IS THE PROPERTY OF MICRO SWITCH, A DIVISION OF HONEYWELL. THIS DRAWING IS NOT TO BE COPIED OR USED WITHOUT THE APPROVAL OF MICRO SWITCH.

CATALOG LISTING	CIRCUIT MADE WITH BUTTON DEPRESSED ON			ELECTRICAL DATA
	LUG SIDE (1-2, 4-5)	CENTER (1-2, 4-5)	OPPOSITE LUG (2-3, 5-6)	
2TPI-1	ON	OFF	ON	L191 15A 125, <u>250</u> , 277 VAC 1/2HP 125 VAC 1HP <u>250</u> , 277 VAC 5A 125 VAC "L"
2TPI-2	OFF	NONE	ON	
2TPI-3	ON	NONE	ON	
2TPI-21	NONE	OFF	ON	
2TPI-31	NONE	ON	ON	L192 10A 125, <u>250</u> , 277 VAC 1/4HP 125 VAC, 1/2HP <u>250</u> , 277 VAC 3A 125 VAC "L"
2TPI-4	MOM OFF	NONE	ON	
2TPI-5	MOM ON	OFF	ON	
2TPI-6	MOM ON	NONE	OFF	
2TPI-7	MOM ON	OFF	MOM ON	
2TPI-8	MOM ON	NONE	ON	
(A)	NONE	ON	MOM ON	
2TPI-61	MOM ON	OFF	NONE	



- NOTES
- 1 - SWITCH WILL WITHSTAND TEMPERATURE OF 160°F
 - 2 - MICRO SWITCH CATALOG LISTING MARKED ON SIDE OF SWITCH
 - $\triangle 3$ SCREWS FURNISHED UNASSEMBLED
 - $\triangle 4$ APPLIES ONLY TO "ON" AND "MOMENTARY ON" POSITIONS

CATALOG LISTING
 2TPI SERIES
 CHART 1
 PAGE 1 OF 1
 ISSUE 4
 REVISIONS
 A CO-93153
 JJA 5 MAY 99
 B CO94412
 DLM 13 OCT 99
 C 202714
 JAH 30 MAR 01
 CHECK KAG 7 JUL 94
 CHECK JUN 94
 DRAWN
 RASTER
 TSM

THIRD ANGLE PROJECTION

SCALE FULL

DO NOT SCALE PRINT

TOLERANCES

APPLY TO DESIGN UNITS. CONVERSIONS ARE ONLY FOR REFERENCE. UNLESS NOTED, TOLERANCES ARE:

NO. PLACES	DM	TOL.	DM.	TOL.
NO PLACES	IN	1/64	IN	0.015
ONE PLACE	X, X	0.4/0.18	X, X	0.06/0.18
TWO PLACES	X, XX	0.16/0.00	X, XX	0.06/0.18
THREE PLACES	X, XXX	0.12/0.00	X, XXX	0.12/0.00

DESIGN UNITS SI METRIC US CUSTOMARY

WEIGHT .14 LB EST