



Chipsmall Limited consists of a professional team with an average of over 10 year of expertise in the distribution of electronic components. Based in Hongkong, we have already established firm and mutual-benefit business relationships with customers from,Europe,America and south Asia,supplying obsolete and hard-to-find components to meet their specific needs.

With the principle of “Quality Parts,Customers Priority,Honest Operation,and Considerate Service”,our business mainly focus on the distribution of electronic components. Line cards we deal with include Microchip,ALPS,ROHM,Xilinx,Pulse,ON,Everlight and Freescale. Main products comprise IC,Modules,Potentiometer,IC Socket,Relay,Connector.Our parts cover such applications as commercial,industrial, and automotives areas.

We are looking forward to setting up business relationship with you and hope to provide you with the best service and solution. Let us make a better world for our industry!



Contact us

Tel: +86-755-8981 8866 Fax: +86-755-8427 6832

Email & Skype: info@chipsmall.com Web: www.chipsmall.com

Address: A1208, Overseas Decoration Building, #122 Zhenhua RD., Futian, Shenzhen, China



2TP30 SERIES

CHART 1

M

DRAWING NUMBER

5

ISSUE

1

RELEASE NO. PR-9347

REPLACES

REVISIONS

A	C049167
B	CJH 16 JUL 81
C	C03877-8
D	200173

FORMTEK

FO-32854-B

J A P 8 SEPT 80

C E B 9 SEPT 80

C H E C K

MICRO SWITCH

FREEPORT ILLINOIS U.S.A.

A DIVISION OF HONEYWELL

FED. MFG. CODE 91929

SWITCH - TOGGLE

FLUSH KEY

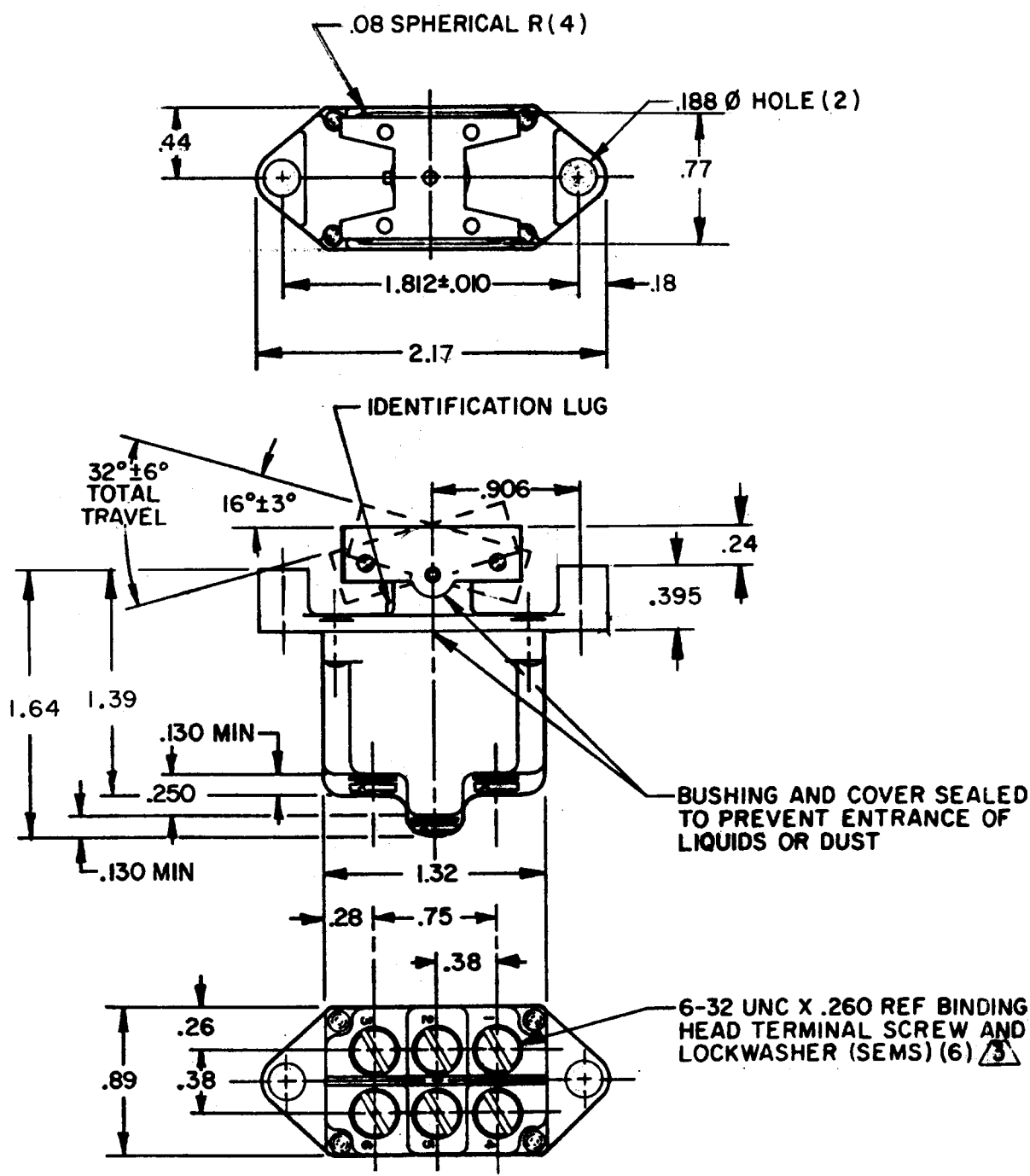
CATALOG LISTING

2TP30 SERIES

CHART 1

THIS DRAWING COVERS A PROPRIETARY ITEM AND IS THE PROPERTY OF MICRO SWITCH A DIVISION OF HONEYWELL. THIS DRAWING IS NOT TO BE COPIED OR USED WITHOUT THE APPROVAL OF MICRO SWITCH

CATALOG LISTING	CIRCUIT MADE WITH DEPRESSED ON			ELECTRICAL DATA
	LUG SIDE (1-2,4-5)	CENTER (1-2,4-5)	OPPOSITE LUG (2-3,5-6)	
2TP30-1	ON	OFF	ON	L191 15A 125, 250, 277 VAC 1/2HP 125 VAC 1HP 250, 277 VAC 5A 125 VAC "L"
2TP30-2	OFF	NONE	ON	
2TP30-3	ON	NONE	ON	
2TP30-21	NONE	OFF	ON	
2TP30-31	NONE	ON	ON	
2TP30-4	MOM OFF	NONE	ON	L192 10A 125, 250, 277 VAC 1/4HP 125 VAC, 1/2HP 250, 277 VAC 3A 125 VAC "L"
2TP30-5	MOM ON	OFF	ON	
2TP30-6	MOM ON	NONE	OFF	
2TP30-7	MOM ON	OFF	MOM ON	
2TP30-8	MOM ON	NONE	ON	
2TP30-51	NONE	ON	MOM ON	
2TP30-61	MOM ON	OFF	NONE	



- NOTES
- 1 - THESE SWITCHES WILL WITHSTAND TEMPERATURE OF 160°F

2 - CIRCUIT DESIGNATION AND MICRO SWITCH CATALOG LISTING STAMPED ON SIDE OF SWITCH

3 - SCREWS FURNISHED UNASSEMBLED