



Chipsmall Limited consists of a professional team with an average of over 10 year of expertise in the distribution of electronic components. Based in Hongkong, we have already established firm and mutual-benefit business relationships with customers from,Europe,America and south Asia,supplying obsolete and hard-to-find components to meet their specific needs.

With the principle of “Quality Parts,Customers Priority,Honest Operation,and Considerate Service”,our business mainly focus on the distribution of electronic components. Line cards we deal with include Microchip,ALPS,ROHM,Xilinx,Pulse,ON,Everlight and Freescale. Main products comprise IC,Modules,Potentiometer,IC Socket,Relay,Connector.Our parts cover such applications as commercial,industrial, and automotives areas.

We are looking forward to setting up business relationship with you and hope to provide you with the best service and solution. Let us make a better world for our industry!



## Contact us

Tel: +86-755-8981 8866 Fax: +86-755-8427 6832

Email & Skype: [info@chipsmall.com](mailto:info@chipsmall.com) Web: [www.chipsmall.com](http://www.chipsmall.com)

Address: A1208, Overseas Decoration Building, #122 Zhenhua RD., Futian, Shenzhen, China

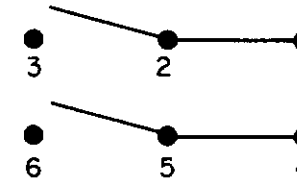
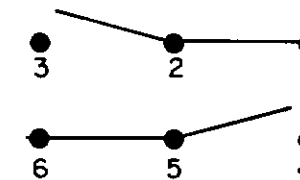
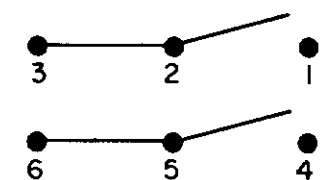


MICRO SWITCH

HONEYWELL

A V L V F W L

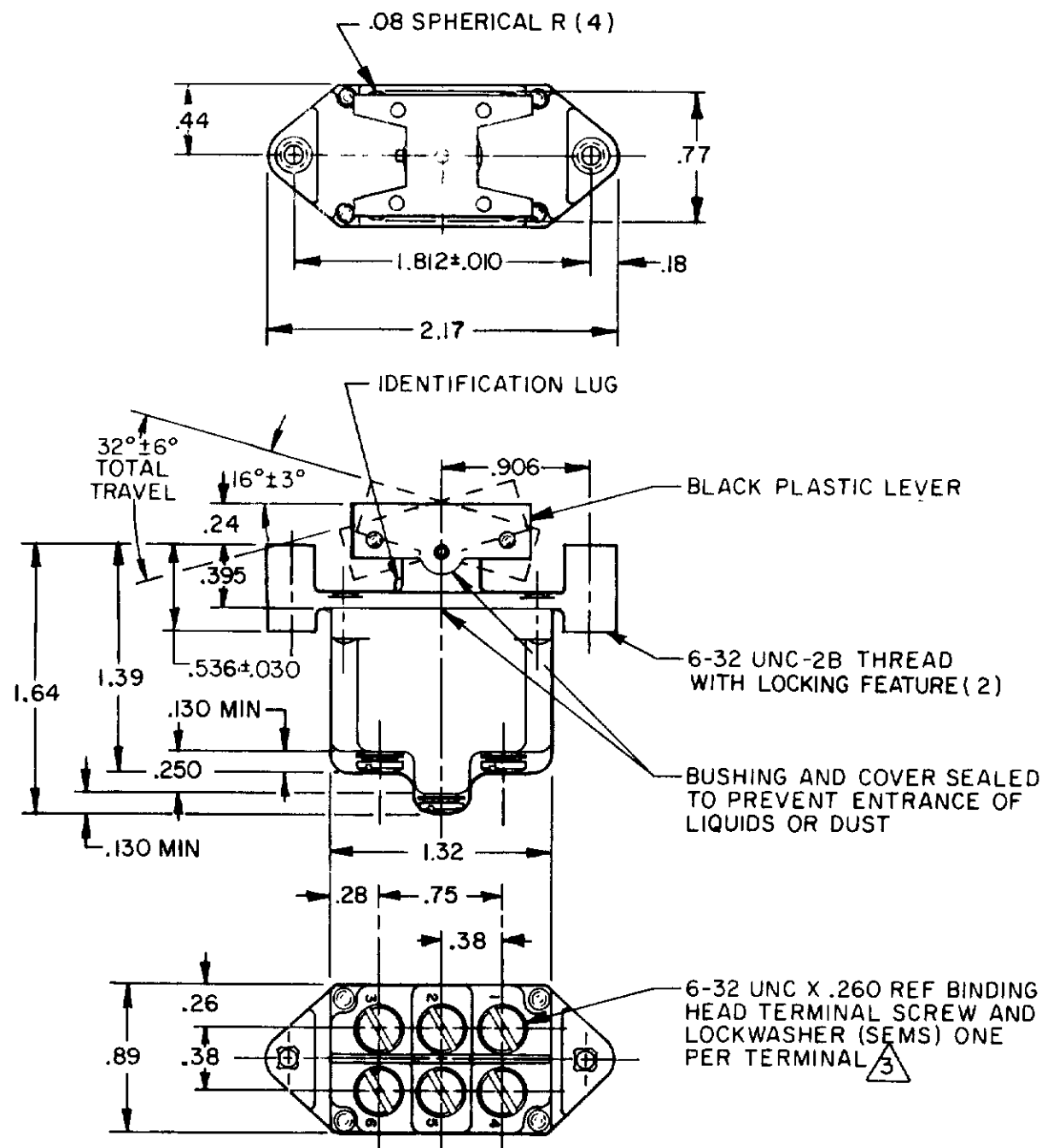
FED. MFG. L. 101 9 920

SWITCH - TOGGLE  
FLUSH KEYCATALOG LISTING  
2TP8-70THIS DRAWING COVERS A PROPRIETARY ITEM AND IS THE PROPERTY OF MICRO SWITCH, A DIVISION OF  
HONEYWELL. THIS DRAWING IS NOT TO BE COPIED OR USED WITHOUT THE APPROVAL OF MICRO SWITCH.CIRCUIT DIAGRAM  
CIRCUIT MADE WITH LEVER DEPRESSED ONLUG SIDE  
(MOMENTARY POSITION)CENTER  
(MAINTAINED POSITION)OPPOSITE LUG  
(MOMENTARY POSITION)

## ELECTRICAL DATA

10A-125, 250, 277VAC  
1/4HP-125VAC; 1/2HP-250, 277VAC  
3A-125VAC "L" L192

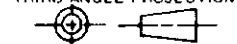
RJ



## NOTES

- 1 - THESE SWITCHES WILL WITHSTAND TEMPERATURE OF 160°F
- 2 - MICRO SWITCH CATALOG LISTING MARKED ON SIDE OF SWITCH
- 3 - SCREWS FURNISHED UNASSEMBLED

THIRD ANGLE PROJECTION



SCALE FULL

DO NOT SCALE PRINT

## TOLERANCES

APPLY TO DESIGN UNITS. CONVERSIONS ARE ONLY FOR  
REFERENCE. UNLESS NOTED, TOLERANCES ARE ±

	DIM	TOL	DIM	TOL
	mm	mm/in	in	mm/in
NO PLACES	X	1/64	X	0.015
ONE PLACE	X.X	0.4/0.15	X.X	0.01/0.03
TWO PLACES	X.XX	0.15/0.005	X.XX	0.38/0.015
THREE PLACES	X.XXX		X.XXX	0.13/0.005

DESIGN UNITS ☐ SI METRIC ☒ US CUSTOMARY

RAW MATERIAL - COMMERCIAL STANDARD

MICRO SWITCH STANDARDS APPLY

DIMENSIONS ARE TO BE MET BEFORE

PROTECTIVE COATINGS ARE APPLIED

WEIGHT .14 LB. EST.

DRAWING NUMBER  
2TP8-70

PAGE 1 OF 1

RELEASE NO PR-3145

M

ISSUE  
9

## REVISIONS

A RE-INS  
PR-11234

21 MAY 82

B CO574968

24 SEP 85

C CO58717-B

22 OCT 86

C CO60369

10 NOV 86

D CO77897

15 JAN 94

E 200032

J J A  
21 JAN 00

F 202714

DLT  
4 APR 01

CHECK

CEB

CHECK

82

MAY

21

T M

FO-52854-C

DRAWN