



Chipsmall Limited consists of a professional team with an average of over 10 year of expertise in the distribution of electronic components. Based in Hongkong, we have already established firm and mutual-benefit business relationships with customers from,Europe,America and south Asia,supplying obsolete and hard-to-find components to meet their specific needs.

With the principle of “Quality Parts,Customers Priority,Honest Operation,and Considerate Service”,our business mainly focus on the distribution of electronic components. Line cards we deal with include Microchip,ALPS,ROHM,Xilinx,Pulse,ON,Everlight and Freescale. Main products comprise IC,Modules,Potentiometer,IC Socket,Relay,Connector.Our parts cover such applications as commercial,industrial, and automotives areas.

We are looking forward to setting up business relationship with you and hope to provide you with the best service and solution. Let us make a better world for our industry!



Contact us

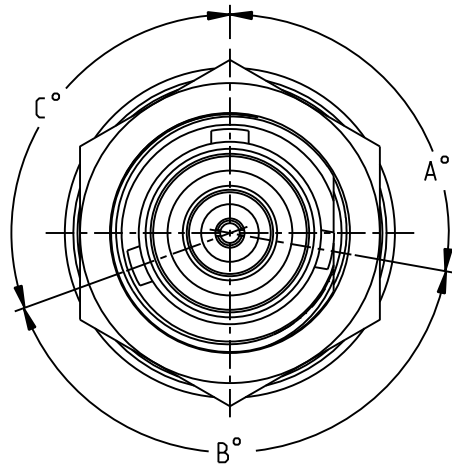
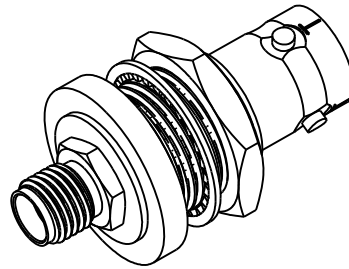
Tel: +86-755-8981 8866 Fax: +86-755-8427 6832

Email & Skype: info@chipsmall.com Web: www.chipsmall.com

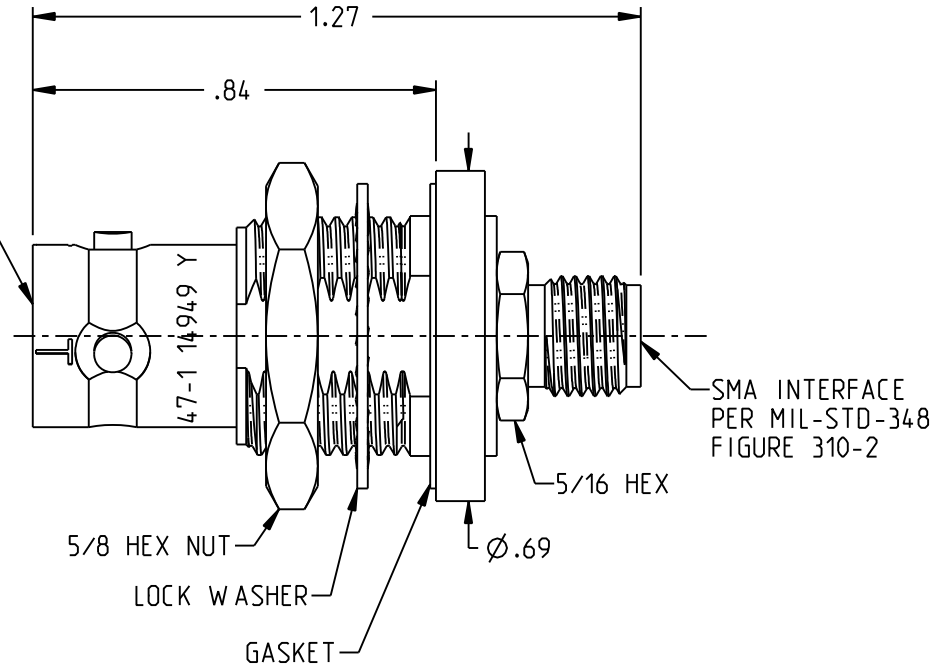
Address: A1208, Overseas Decoration Building, #122 Zhenhua RD., Futian, Shenzhen, China



POLARIZATION CHART				
TROMPETER PART NO	KEYING LETTER	A°	B°	C°
3-0347-1	T	100	150	110
3-0347-2	U	120	130	110
3-0347-3	V	115	130	115
3-0347-4	W	125	110	125
3-0347-5	X	130	100	130
3-0347-6	Y	110	140	110
3-0347-7	Z	100	160	100
3-0347-8	S	135	135	90
3-0347-9	NONE	120	120	120



TRB INTERFACE
PER MIL-STD-348
FIGURE 201-2



NOTES: UNLESS OTHERWISE SPECIFIED.

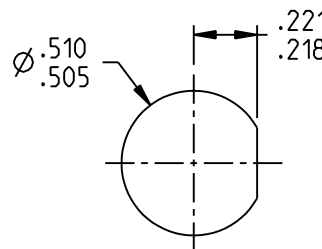
- MATERIAL AND FINISH:
 - 1.1 TRB BODY: NICKEL PLATED BRASS
 - 1.2 OUTER INSULATOR: PTFE (TEFLON)
 - 1.3 INTERMEDIATE CONTACT AND SMA BODY: GOLD PLATED BRASS
 - 1.4 DIELECTRIC: PTFE (TEFLON)
 - 1.5 CENTER CONTACT: GOLD PLATED BERYLLIUM COPPER
 - 1.6 HARDWARE: NICKEL PLATED COPPER ALLOY
 - 1.7 GASKET: SILICONE RUBBER

- ELECTRICAL:
 - 2.1 FREQUENCY (MAX): 500 MHz
 - 2.2 IMPEDANCE: NON-CONSTANT

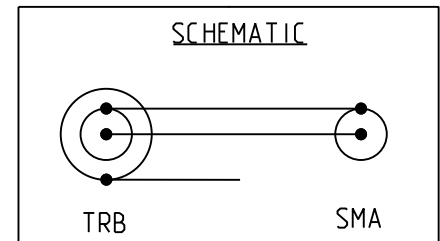
3. PANEL NUT TORQUE (MAX): 35 INCH POUND

4. PANEL THICKNESS (MAX): .160

3-0347-1 SHOWN



RECOMMENDED
PANEL CUTOUT



		TROMPETER	
		Title: ADAPTER, TRB JACK TO SMA JACK, BULKHEAD MOUNT	
This PROPRIETARY Document is property of Cinch Connectivity Solutions. It is confidential in nature, non-transferable, and issued with the clear understanding that it is not to be traced or copied without permission and is returnable upon demand.	RoHS2 <input checked="" type="checkbox"/> 2011/65/EU	Model No.	3-0347-X
	UNLESS OTHERWISE SPECIFIED UNITS: INCH .XX ±.02 .XXX ±.005 ANGLES ±2°	INTERPRET DRAWING IN ACCORDANCE WITH ASME Y14.5-2009	Size A DO NOT SCALE DRAWING