



Chipsmall Limited consists of a professional team with an average of over 10 year of expertise in the distribution of electronic components. Based in Hongkong, we have already established firm and mutual-benefit business relationships with customers from,Europe,America and south Asia,supplying obsolete and hard-to-find components to meet their specific needs.

With the principle of “Quality Parts,Customers Priority,Honest Operation,and Considerate Service”,our business mainly focus on the distribution of electronic components. Line cards we deal with include Microchip,ALPS,ROHM,Xilinx,Pulse,ON,Everlight and Freescale. Main products comprise IC,Modules,Potentiometer,IC Socket,Relay,Connector.Our parts cover such applications as commercial,industrial, and automotives areas.

We are looking forward to setting up business relationship with you and hope to provide you with the best service and solution. Let us make a better world for our industry!



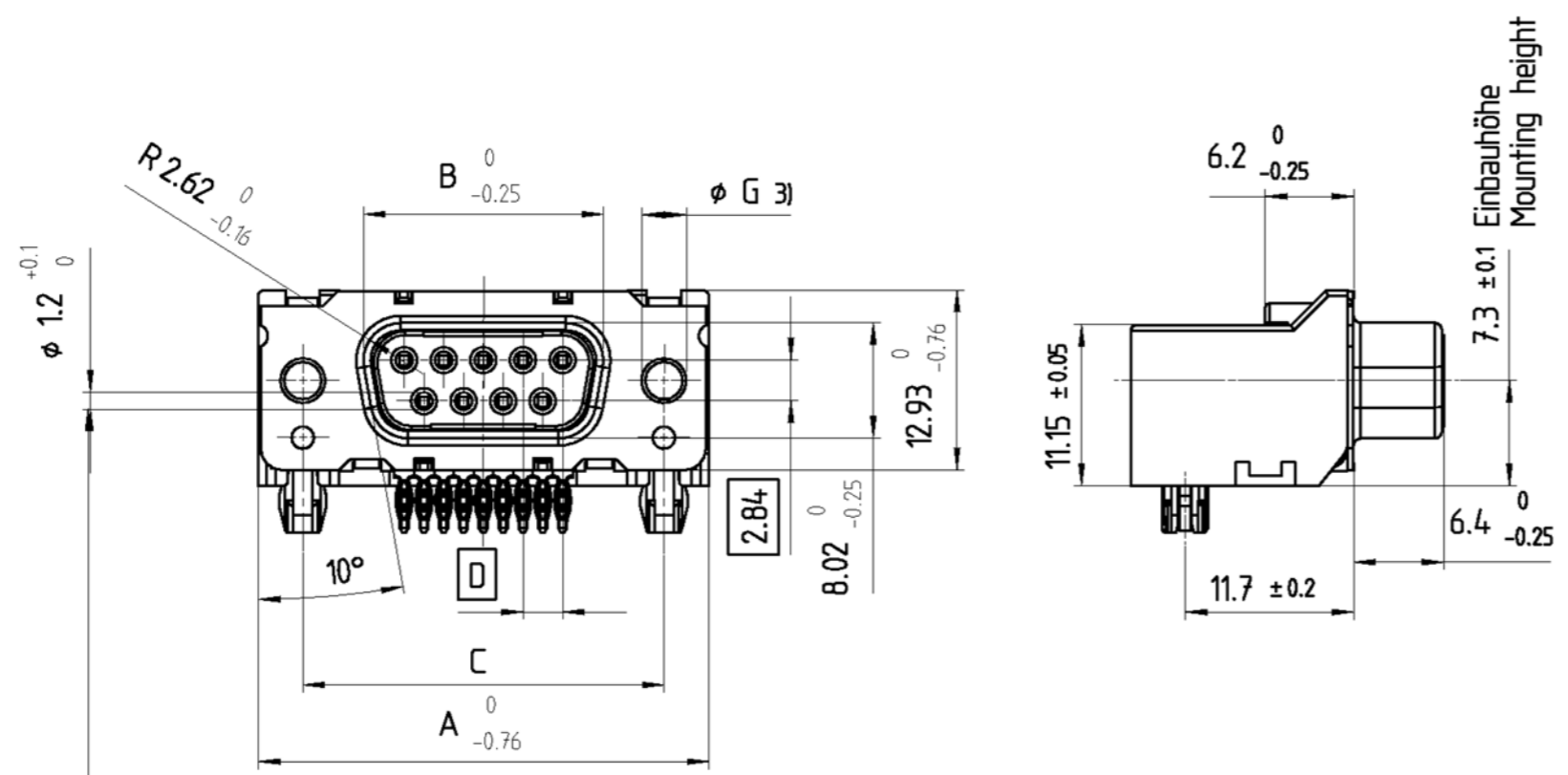
Contact us

Tel: +86-755-8981 8866 Fax: +86-755-8427 6832

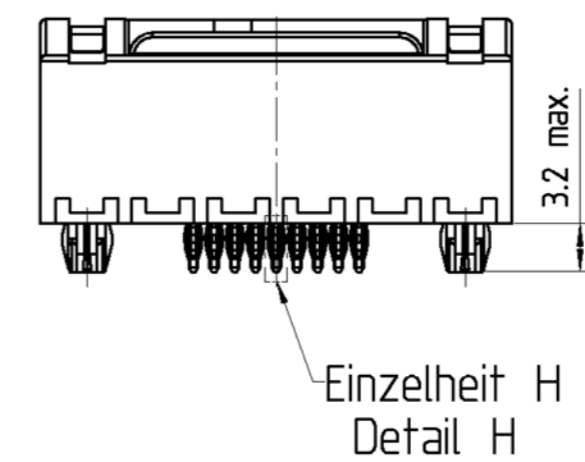
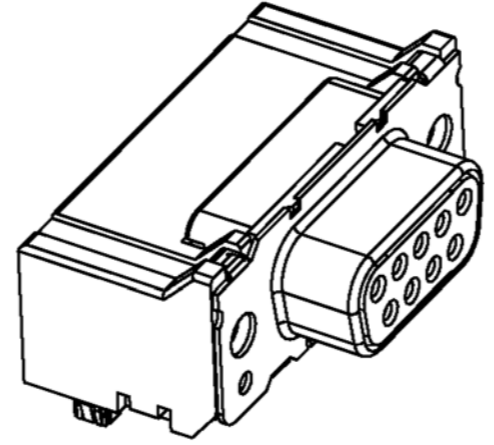
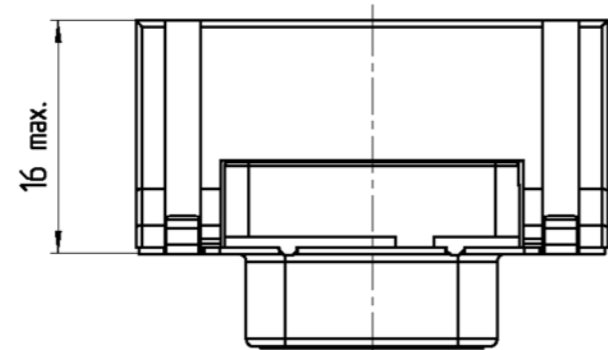
Email & Skype: info@chipsmall.com Web: www.chipsmall.com

Address: A1208, Overseas Decoration Building, #122 Zhenhua RD., Futian, Shenzhen, China

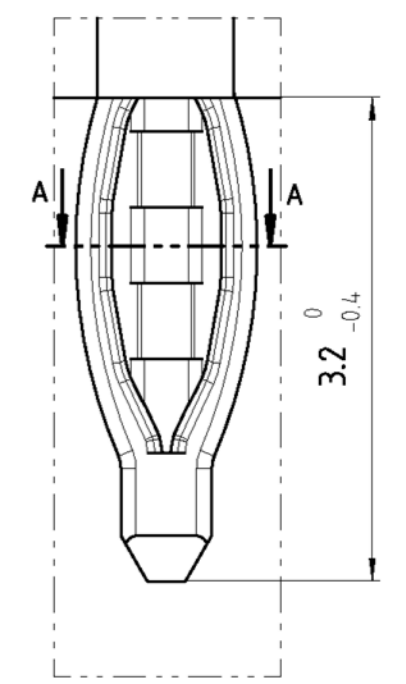




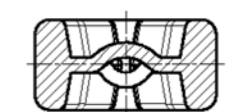
alle Kontakte/all contacts
 ϕ 0.13 (M)



Einzelheit H (20:1)
Detail H (20:1)



Schnitt AA (20:1)
Section (20:1)



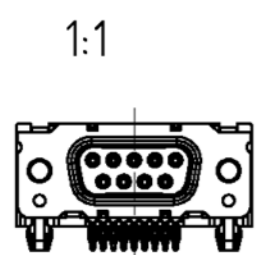
- 4) Plated-through hole ; incl. plating
suitable for compliant press-in zone
PCB-plating-through : 5...15 μ m Sn or SnPb over min. 25 μ m Cu
Drilled holes : ϕ 1.15 \pm 0.025 and ϕ 3.15 \pm 0.025
- 3) torquereffention \geq 70 Ncm
- 2) according to DIN 41611 p.5, DIN IEC 353-5; incl. plating
- 1) according to DIN 41652 p.2 and p.4

- 4) Durchmetallisierte Löcher; incl. Oberflächenbehandlung
Geeignet für elastische Einpreßzonen
Metallierung des Loches: 5...15 μ m Sn oder SnPb über min. 25 μ m Cu
Bohrdurchmesser: ϕ 1.15 \pm 0.025 und ϕ 3.15 \pm 0.025
- 3) Verdrehsicherheit \geq 70 Nm
- 2) Nach DIN 41611 T.5, DIN IEC 352-5; incl. Oberflächenbehandlung
- 1) Nach DIN 41652 T.2 und T.4

| Sachnr./Ordercode V23529-R1****- | Polzahl n Contacts n | Maß/Dimension | | | |
|-------------------------------------|-------------------------|---------------|-------|--------------------------|------|
| | | A | B | C | D |
| B*09 | 09 | 31.19 | 16.46 | 25.00 $^{+0.12}_{-0.13}$ | 2.74 |
| B*15 | 15 | 39.52 | 24.79 | 33.30 $^{+0.15}_{-0.1}$ | 2.74 |
| B*25 | 25 | 53.42 | 38.50 | 47.04 $^{+0.13}_{-0.13}$ | 2.76 |
| B*37 | 37 | 69.70 | 54.96 | 63.50 $^{+0.13}_{-0.13}$ | 2.76 |

Anforderungsstufe 1)
performance level 1)

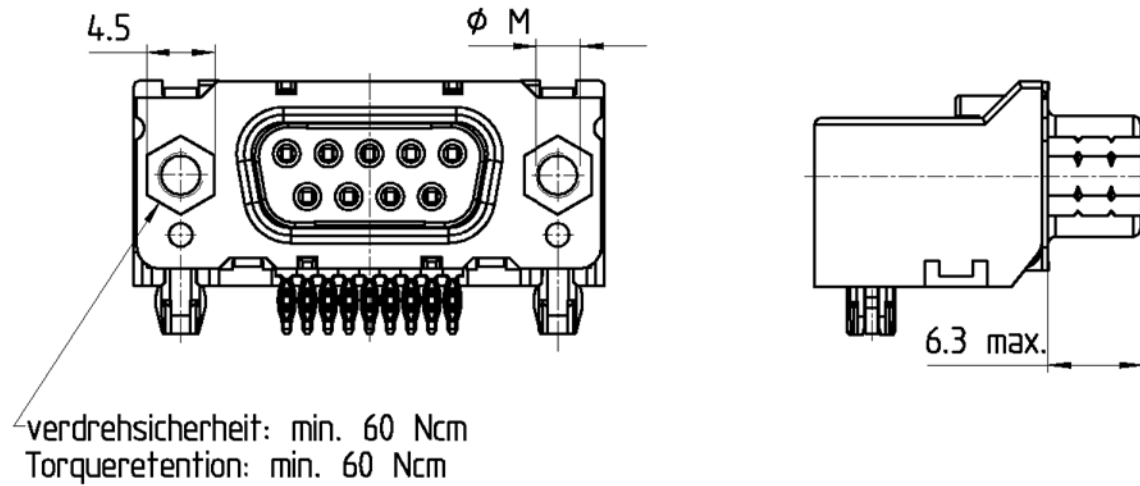
| Sachnr./Ordercode V23529- | Maß/Dimension ϕ G |
|------------------------------|---------------------------|
| R1*02-B*** | M3 |
| R1*03-B*** | 4-40UNC |



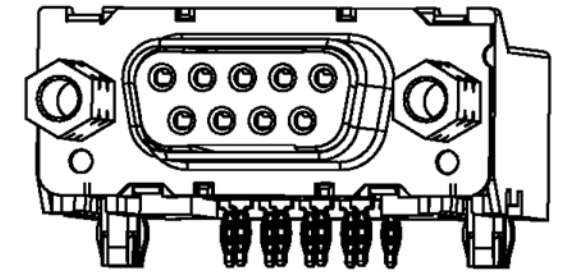
Dargestellt wird die 9-polige Ausführung V23529-R1202-B209
On the drawing : the 9 pole version V23529-R1202-B209

| | | |
|--|---|------------------|
| CHANGES TO THIS DRAWING MUST BE DONE ONLY IN CAD | | PAPER SIZE A2 |
| APPLICABLE SPEC. : | FINISH | |
| DIMENSIONS APPLY | | PLATING |
| SCALE 2:1, 20:1, 1:1 | | WEIGHT |
| MATERIAL | | |
| TE Connectivity | | DIMENSIONS IN MM |
| DATE 7.2.96 | NAME Sub-D 90° abgewinkelt Standard Einpreß Buchsenleiste | |
| NAME Sterckx | D-Sub 90° angled standard press fit Socket | |
| APP. EC CS CI | NO. V23529-R****-B****-7427 | |
| TOLERANCE UNLESS SPECIFIED OTHERWISE | | SHT. 1 |
| ECO-12-004885 03MAY12 CWR | ECO-11-005294 13APR11 HMR | |
| CUSTOMER DRAWING No.: C 2-13934-81-1 | | OF 3 |

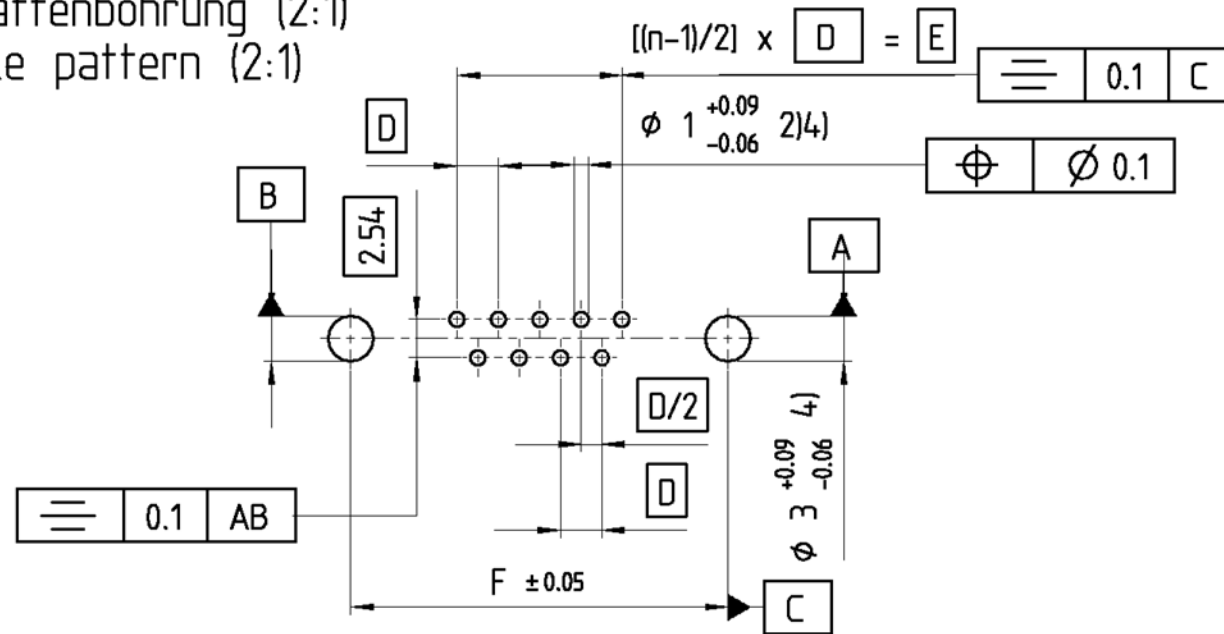
Ausführung mit Gewindebolzen
Version with studbolt
V23529-R1*04/R1*05-B***



| Sachnr./Ordercode V23529- | Maß/Dimension Ø M |
|------------------------------|----------------------|
| S1*04-B*** | M3 |
| S1*05-B*** | 4-40UNC |



Leiterplattenbohrung (2:1)
PCB hole pattern (2:1)



| Sachnr./Ordercode V23529-S1***- | Polzahl n Contacts n | Maß/Dimension | | |
|------------------------------------|-------------------------|---------------|-------|-------|
| | | D | E | F |
| B*09 | 09 | 2.74 | 10.96 | 25.00 |
| B*15 | 15 | 2.74 | 19.18 | 33.30 |
| B*25 | 25 | 2.76 | 33.12 | 47.04 |
| B*37 | 37 | 2.76 | 49.68 | 63.50 |

Anforderungsstufe 1)
performance level 1)

Verpreßhinweis
press-in information

Einpressen über Kunststoff mit:
- 2-Hub-Pressen 60kN : 1-1393491-3
- Einpreßmaschine 60/100 kN : 4-1393488-2
Zu verwendenden Werkzeuge :
- Drückstück : 1393490-6
- Amboß : 3-1393489-5
Einstellhöhe : Abstand zwischen LP und
angedrucktem Stempel : 11.15 bis 11.3mm

pressing in via the plastic body :
- 2-stroke press 60kN : 1-1393491-3
- press-fit machine 60/100kN : 4-1393488-2
pressing-in tools :
-Compression tool : 1393490-6
-anvil : 3-1393489-5
set-up heights : distance between PCB and
compression tool : 11.15 to 11.3 mm

Erläuterungen siehe Seite 1
Remarks see page 1

| | | | |
|--------------------------------------|------|--|-------------------------------------|
| APPLICABLE SPEC.: | | FINISH | |
| TE Connectivity | | DIMENSIONS APPLY PLATING | |
| SCALE 2:1 | | WEIGHT | |
| MATERIAL | | NAME | |
| DATE 7.2.96 | | Sub-D 90° abgewinkelt Standard Einpreß | |
| NAME Sterckx | | Buchsenleiste | |
| DEP. EC CS CI | | D-Sub 90° angled standard press fit | |
| TOLERANCE UNLESS SPECIFIED OTHERWISE | | Socket | |
| C SEE PAGE 1 | NO. | V23529-R****-B***-*-7427 | |
| B3 see page 1 | SHT. | 2 | |
| REV. CHANGE ORDER | DATE | APP. | CUSTOMER DRAWING No.: C 2-1393481-1 |
| | | | OF 3 |

Sub-D 90° abgewinkelt Einpreß // D-Sub 90° press-in

V 2 3 5 2 9 - + * * * * - + * * *

EINBAUHÖHE // MOUNTING HEIGHT
R = Standardbauhöhe 7.3mm // Standard Style 7.3 mm

AUFBAU // CONFIGURATION
1 = isoliert // insulated
2 = geschirmt 1) // shielded 1)

BESCHRIFTUNG // MARKING
1 = tyco // tyco
2 = Neutral // neutral
3 = Sonderbeschriftung A // special marking A
4 = Sonderbeschriftung B // special marking B
5 = Sonderbeschriftung C // special marking C

ANSCHLUßAUSFÜHRUNG // CONTACT TYPE
0, 1 = EP-Stiel 3.2 mm // press-in pin 3.2 mm long

BEFESTIGUNG Steckseite/Leiterplatteseite // MOUNTING CONNECTOR/PCB
01 = Loch Ø3 / ohne Massekontakt 1) // hole Ø3 / without grounding
02 = Gewinde M3 / mit Massekontakt // thread M3 / with grounding
03 = Gewinde 4-40 UNC / mit Massekontakt // thread 4-40 UNC / with grounding
04 = Gewindebolzen M3 / mit Massekontakt // studbolt srewlock M3 / with grounding
05 = Gewindebolzen 4-40 UNC / mit Massekontakt // studbolt srewlock 4-40 UNC / with grounding

STECKERPOLZAHL // NO OF CONTACTS
09 = 9-polig // 9-contact
15 = 15-polig // 15-contact
25 = 25-polig // 25-contact
37 = 37-polig // 37-contact


ANFORDERUNGSSTUFE // PERFORMANCE LEVEL **CONTACT SURFACE**
2 = Anf. II // PL II Au or Au FLASH OVER PdNi

STECKERART // CONNECTOR TYPE
B = Buchsenleiste // female connector

1) in Vorbereitung // in preparation

Active part numbers. Contact TE CONNECTIVITY for other configuration availability

| Old Part Number | TE CONNECTIVITY Part Number |
|-------------------|-----------------------------|
| V23529-R1102-B209 | 2-1393481-1 |
| V23529-R1102-B215 | 2-1393481-2 |
| V23529-R1102-B225 | 2-1393481-3 |
| V23529-R1102-B237 | 2-1393481-4 |
| V23529-R1103-B209 | 2-1393481-9 |
| V23529-R1103-B215 | 3-1393481-0 |
| V23529-R1103-B225 | 3-1393481-1 |
| V23529-R1103-B237 | 2-1392010-6 |
| V23529-R1105-B209 | 3-1393481-6 |
| V23529-R1105-B215 | 2-1393497-4 |
| V23529-R1105-B225 | 2-1393497-5 |
| V23529-R1105-B237 | 2-1393497-6 |

| | | |
|--|------------------|------------------|
| CHANGES TO THIS DRAWING MUST BE DONE ONLY IN CAD | | PAPER SIZE A2 |
| APPLICABLE SPEC.: | FINISH | |
| | DIMENSIONS APPLY | PLATING |
|  TE Connectivity | | SCALE |
| DATE: 7.2.96 NAME: Sterck APP.: EC CS 0 | | WEIGHT |
| MATERIAL | | |
| NO. Sub-D 90° abgewinkelt Standard Einpreß Buchsenleiste D-Sub 90° angled standard press fit Socket | | |
| NO. V23529-R*****-B*****-7427 | | SHT. 3 |
| REV. CHANGE ORDER DATE APP. | | OF 3 |
| CUSTOMER DRAWING No.: C 2-1393481-1 | | |