



Chipsmall Limited consists of a professional team with an average of over 10 year of expertise in the distribution of electronic components. Based in Hongkong, we have already established firm and mutual-benefit business relationships with customers from,Europe,America and south Asia,supplying obsolete and hard-to-find components to meet their specific needs.

With the principle of “Quality Parts,Customers Priority,Honest Operation,and Considerate Service”,our business mainly focus on the distribution of electronic components. Line cards we deal with include Microchip,ALPS,ROHM,Xilinx,Pulse,ON,Everlight and Freescale. Main products comprise IC,Modules,Potentiometer,IC Socket,Relay,Connector.Our parts cover such applications as commercial,industrial, and automotives areas.

We are looking forward to setting up business relationship with you and hope to provide you with the best service and solution. Let us make a better world for our industry!



Contact us

Tel: +86-755-8981 8866 Fax: +86-755-8427 6832

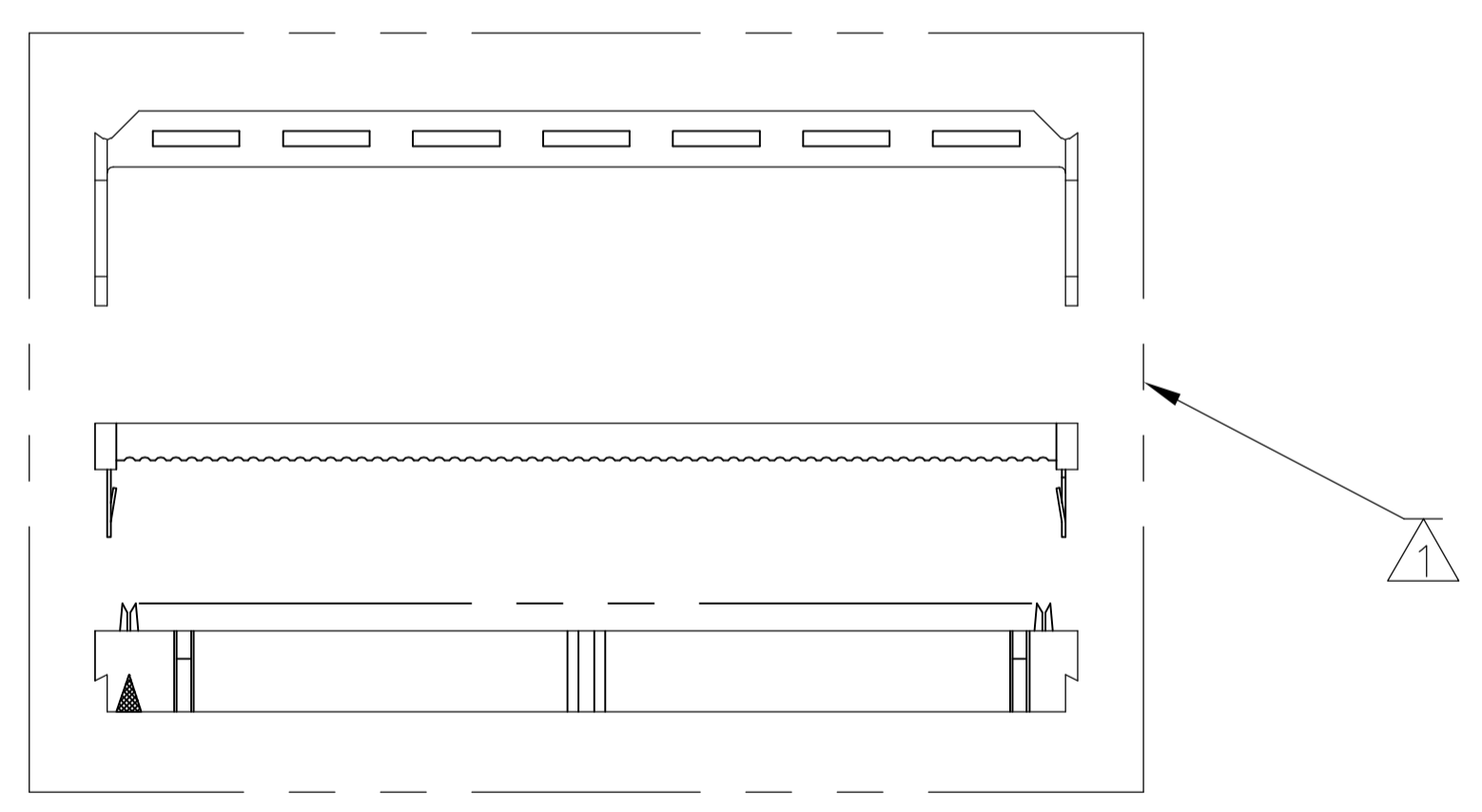
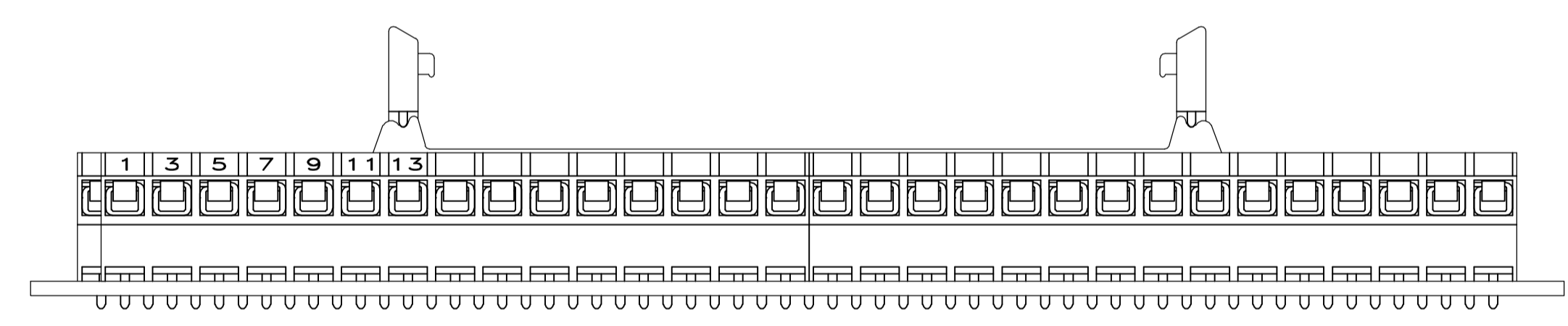
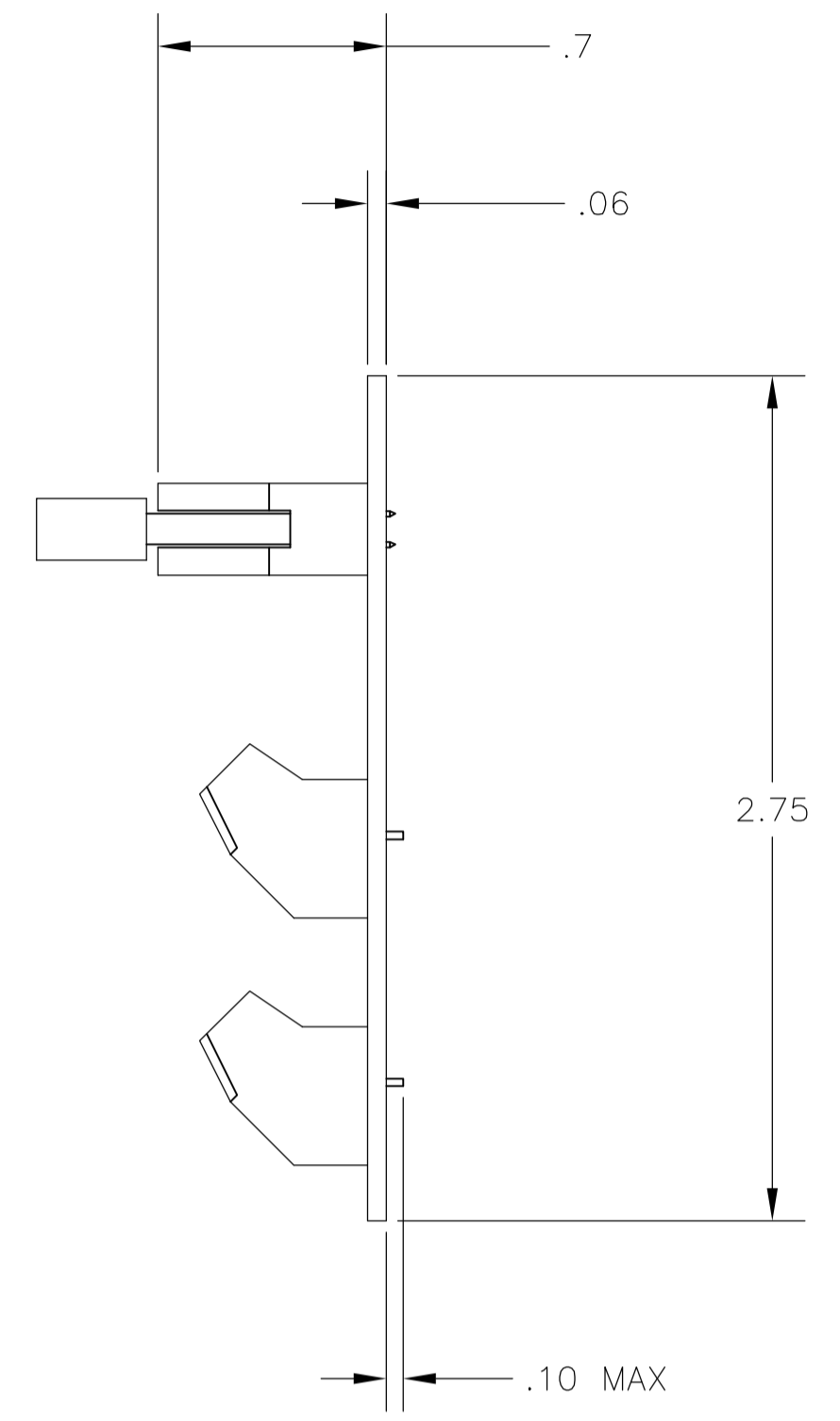
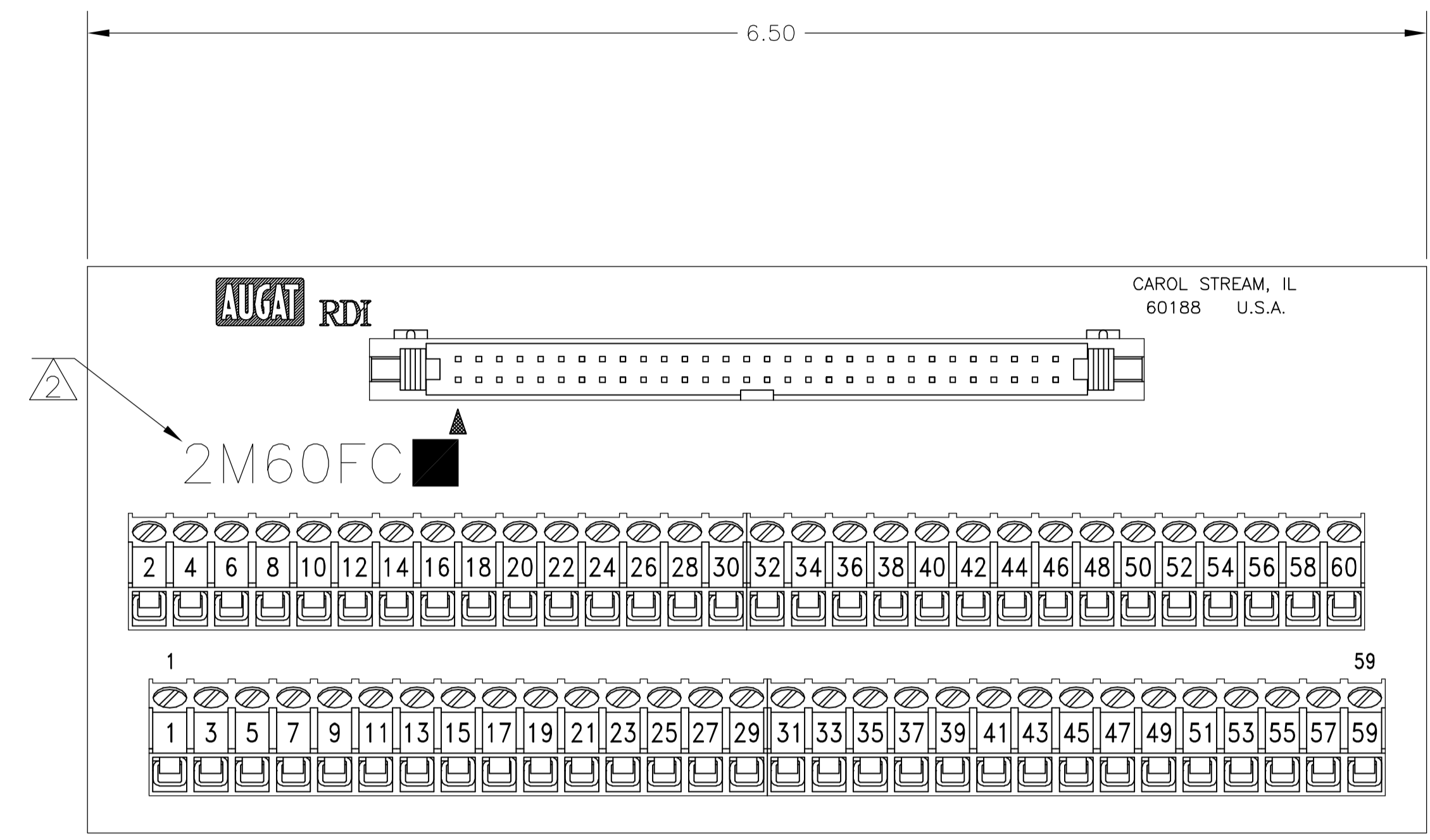
Email & Skype: info@chipsmall.com Web: www.chipsmall.com

Address: A1208, Overseas Decoration Building, #122 Zhenhua RD., Futian, Shenzhen, China



LOC		DIST		REVISIONS			
FT	O	REV	DATE	BY	APPV	DATE	BY
A		1	9/30/05	SS	SRV		

HEADER:
MATERIALS:
 HEADER: COPPER ALLOY, GOLD PLATED,
 94V-0 THERMOPLASTIC.
 CONNECTOR: COPPER ALLOY, GOLD PLATED,
 94V-0 THERMOPLASTIC.
ELECTRICAL:
 RATING: 1 AMPERE MAX. (CONNECTOR).
MECHANICAL:
 WIRE RANGE: 26-30 AWG SOLID, 28 AWG STRANDED.
TERMINAL BLOCK:
MATERIALS:
 HOUSING: THERMOPLASTIC NYLON, BLACK, 94V-0.
 TERMINALS: COPPER ALLOY, TIN PLATED.
 SCREWS: 3M, BRASS, NICKEL PLATED.
ELECTRICAL:
 RATING: 10A, 300V(UL).
MECHANICAL:
 WIRE RANGE: 14-22 AWG.
MOUNTING:
MATERIALS:
 MOUNTING: 2TK2 AND 2TK2D SERIES SNAPTRACK
 (SOLD SEPARATELY).
 ⚠ ALL CONNECTOR/STRAIN RELIEF COMPONENTS TO BE
 SHIPPER LOOSE AND UNASSEMBLED.
 ⚠ CATALOG NUMBER MARKED HERE.
 ⚠ CONTAINS NO TIN-LEAD PLATING.



2M60FCL	1776644-1
2M60FC	3-1437684-3
CATALOG NUMBER	PART NUMBER

THIS DRAWING IS A CONTROLLED DOCUMENT.

DIMENSIONS: INCHES	TOLERANCES UNLESS OTHERWISE SPECIFIED:	0 PLC ± -	1 PLC ± .1	2 PLC ± .01	3 PLC ± -	4 PLC ± -	ANGLES ± -	FINISH
--------------------	--	-----------	------------	-------------	-----------	-----------	------------	--------

APPROVED	DATE	BY	DATE
M.S. FEHER	02APR2004	S. YODER	02APR2004
Tyco Electronics Corporation		Harrisburg, PA 17105-3608	
NAME: 2M60FC ASSEMBLY			
SIZE	CAGE CODE	DRAWING NO	RESTRICTED TO
A1	00779	3-1437684-3	-
CUSTOMER DRAWING		SCALE	SHEET
		NTS	1 OF 1