



Chipsmall Limited consists of a professional team with an average of over 10 year of expertise in the distribution of electronic components. Based in Hongkong, we have already established firm and mutual-benefit business relationships with customers from,Europe,America and south Asia,supplying obsolete and hard-to-find components to meet their specific needs.

With the principle of “Quality Parts,Customers Priority,Honest Operation,and Considerate Service”,our business mainly focus on the distribution of electronic components. Line cards we deal with include Microchip,ALPS,ROHM,Xilinx,Pulse,ON,Everlight and Freescale. Main products comprise IC,Modules,Potentiometer,IC Socket,Relay,Connector.Our parts cover such applications as commercial,industrial, and automotives areas.

We are looking forward to setting up business relationship with you and hope to provide you with the best service and solution. Let us make a better world for our industry!



## Contact us

Tel: +86-755-8981 8866 Fax: +86-755-8427 6832

Email & Skype: info@chipsmall.com Web: www.chipsmall.com

Address: A1208, Overseas Decoration Building, #122 Zhenhua RD., Futian, Shenzhen, China



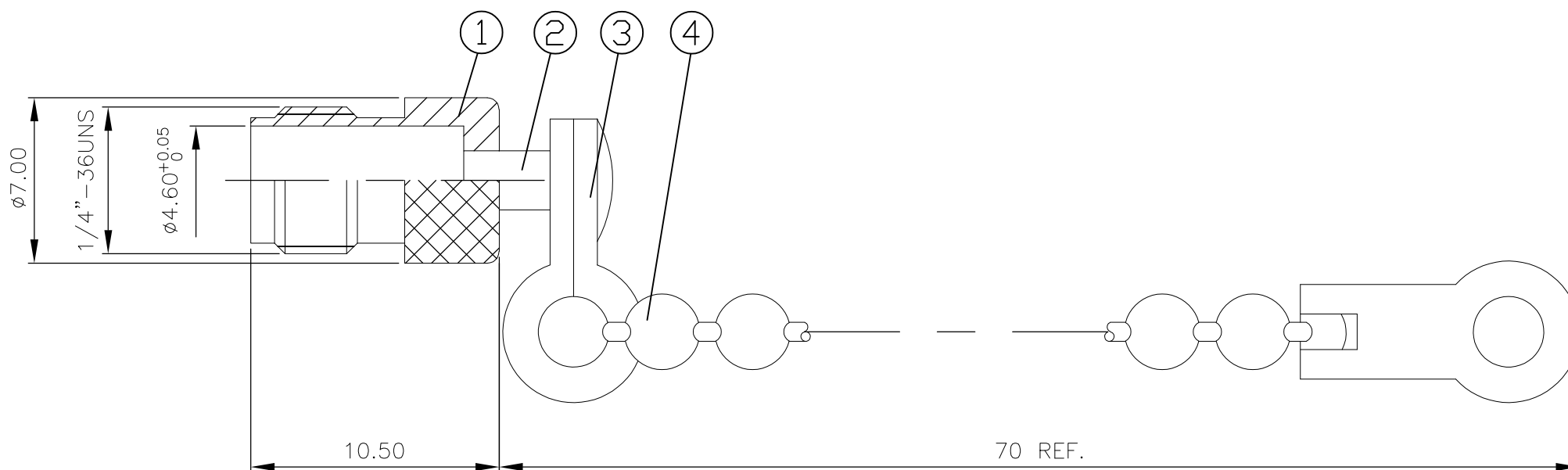
THIS DRAWING IS UNPUBLISHED. RELEASED FOR PUBLICATION APRIL, 2004.

© COPYRIGHT 2004 By - ALL RIGHTS RESERVED.

LOC	DIST	REVISIONS					
		P	LTR	DESCRIPTION	DATE	DWN	APVD
E	B		A	EBD0-0035-03	13FEB04	RS	FWK
			B	ECO-12-003920	29FEB12	TITAN	MARTIN

NOTES:

- 1 SINGLE PACK IN ACCORDANCE WITH SPEC 107-3275
- 2 100 TRAY PACK IN ACCORDANCE WITH SPEC 107-3275
- 3 Au PLATING
- 4 FOR TECHNICAL DATA REFER TO YOUR LOCAL TYCO ELECTRONICS SALES OFFICE
- 5 ALL DIMENSIONS ARE NOMINAL FOR REFERENCE ONLY UNLESS OTHERWISE STATED
- 6 OPERATING TEMPERATURE RANGE: -65°C~+165°C
- 7 DURABILITY: 500 CYCLES



QTY	QTY	MATERIAL	DESCRIPTION	ITEM
1	1	BRASS	CHAIN	4
1	1	STAINLESS STEEL	JOINT	3
1	1	BRASS	RIVET	2
1	1	BRASS	SHELL	1
3--1	3--0	MATERIAL	DESCRIPTION	ITEM
2	1			

THIS DRAWING IS A CONTROLLED DOCUMENT.		DWN R.SMITH 13FEB04	<b>STE</b> TE Connectivity		
DIMENSIONS: mm		CHK S.PARLOW 13FEB04			
TOLERANCES UNLESS OTHERWISE SPECIFIED:		APVD F.WHEELER-KING 13FEB04	NAME SMA JACK DUST CAP AND CHAIN		
0 PLC ± -		PRODUCT SPEC 108-3460	SIZE A3		
1 PLC ± 0.2		APPLICATION SPEC	CAGE CODE 00779	DRAWING NO C-1478986	RESTRICTED TO -
2 PLC ± 0.1		WEIGHT -	SCALE 1:1		
3 PLC ± 0.05		CUSTOMER DRAWING	SHEET 1 OF 1		REV B
4 PLC ± -					
ANGLES ± 5'					
MATERIAL SEE TABLE					
FINISH -					