



Chipsmall Limited consists of a professional team with an average of over 10 year of expertise in the distribution of electronic components. Based in Hongkong, we have already established firm and mutual-benefit business relationships with customers from,Europe,America and south Asia,supplying obsolete and hard-to-find components to meet their specific needs.

With the principle of “Quality Parts,Customers Priority,Honest Operation,and Considerate Service”,our business mainly focus on the distribution of electronic components. Line cards we deal with include Microchip,ALPS,ROHM,Xilinx,Pulse,ON,Everlight and Freescale. Main products comprise IC,Modules,Potentiometer,IC Socket,Relay,Connector.Our parts cover such applications as commercial,industrial, and automotives areas.

We are looking forward to setting up business relationship with you and hope to provide you with the best service and solution. Let us make a better world for our industry!



Contact us

Tel: +86-755-8981 8866 Fax: +86-755-8427 6832

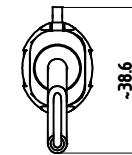
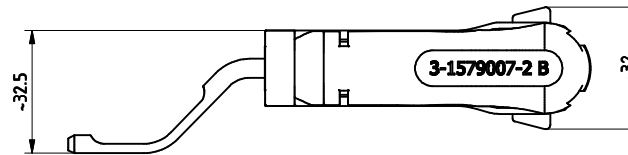
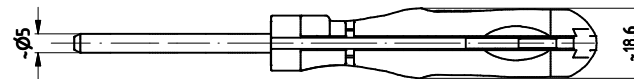
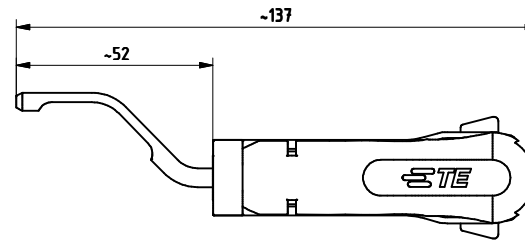
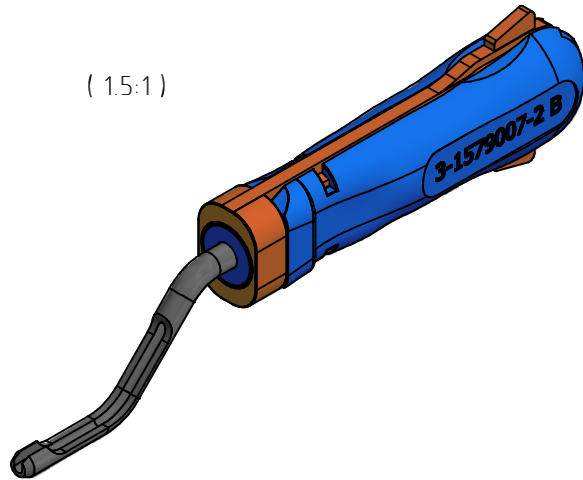
Email & Skype: info@chipsmall.com Web: www.chipsmall.com

Address: A1208, Overseas Decoration Building, #122 Zhenhua RD., Futian, Shenzhen, China



LOC AI	DIST 00	REVISIONS			
P	LTR	DESCRIPTION	DATE	OWN	APVD
C		ECR-17-000823	19JAN17	KH	RG

(1.5:1)



**APPLICATION RANGE /
 ANWENDUNGSBEREICH**
 2.5mm Single Wire System
 Insulation diameter ≤ 2.1mm
 pin and socket contact /
 2.5mm Einzeldichtungssystem
 Isolationsdurchmesser ≤ 2.1mm
 Stift- und Buchsenkontakt

THIS DRAWING IS A CONTROLLED DOCUMENT.		DWN: M. Delp 15JAN08 CHK: G. Stegmayer 15JAN08 APP'D: G. Stegmayer 15JAN08		
DIMENSIONS: mm 	TOLERANCES UNLESS OTHERWISE SPECIFIED: 0 PLC ± 3 PLC ± 3 PLC ± 3 PLC ± ANGLES ±	NAME INSERTION TOOL Einsetzwerkzeug	SIZE: A2 CASE CODE: 00779 DRAWING NO: 3-1579007-2 RESTRICTED TO:	
MATERIAL	FINISH	APPLICATION SPEC: CUSTOMER DRAWING	SCALE: 1:1 SHEET: 1 of 1 REV: C	