



Chipsmall Limited consists of a professional team with an average of over 10 year of expertise in the distribution of electronic components. Based in Hongkong, we have already established firm and mutual-benefit business relationships with customers from,Europe,America and south Asia,supplying obsolete and hard-to-find components to meet their specific needs.

With the principle of “Quality Parts,Customers Priority,Honest Operation,and Considerate Service”,our business mainly focus on the distribution of electronic components. Line cards we deal with include Microchip,ALPS,ROHM,Xilinx,Pulse,ON,Everlight and Freescale. Main products comprise IC,Modules,Potentiometer,IC Socket,Relay,Connector.Our parts cover such applications as commercial,industrial, and automotives areas.

We are looking forward to setting up business relationship with you and hope to provide you with the best service and solution. Let us make a better world for our industry!



Contact us

Tel: +86-755-8981 8866 Fax: +86-755-8427 6832

Email & Skype: info@chipsmall.com Web: www.chipsmall.com

Address: A1208, Overseas Decoration Building, #122 Zhenhua RD., Futian, Shenzhen, China





Corcom HT Series 20A Power Line Filters

The HT Series filters are designed to provide significant attenuation of RFI noise in the frequency ranges from 10kHz to 30MHz for low leakage current applications. The new 20A versions come in a chassis mount style and offer spade or threaded bolt termination options.

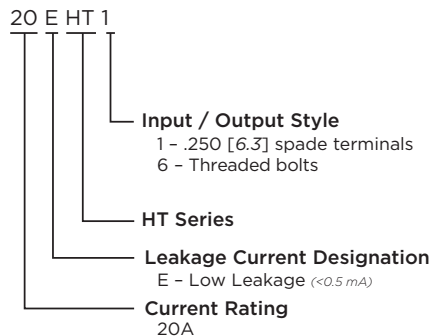
KEY FEATURES

- Two stage electrical setup provides significant attenuation from 10kHz to 30MHz
- Low profile design allows for a space-saving design solution
- Compliant with internal spacing requirements for UL60601-1, 3rd edition for medical applications
- Designed for easy connection and installation

APPLICATIONS

- Dialysis machines
- Diagnostic equipment
- Medical laser
- CAT scanners
- MRT scanners
- Dentist equipment
- Operating room equipment
- Physical therapy equipment

ORDERING INFORMATION



1. Does not apply to 20EHT7 version

STANDARDS AND SPECIFICATIONS

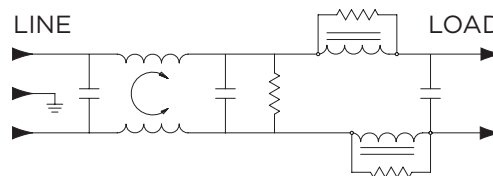
- UL Recognized
- VDE Approved
- CSA Pending



ELECTRICAL SPECIFICATIONS

Hipot rating (one minute):	Line to Ground:	1500 VAC
	Line to Line:	1450 VDC
Rated Voltage:		250 VAC
Operating Frequency:		50/60 Hz
Rated Current:		20A max.

ELECTRICAL SCHEMATIC



PRODUCT OFFERING

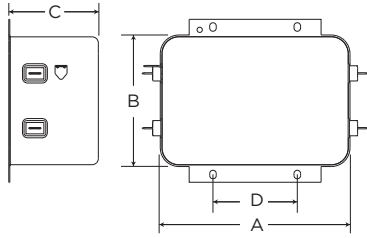
- 4-1609037-0:** 20EHT1 20A HT Series filter with spade terminals
3-1609037-5: 20EHT6 20A HT Series filter with threaded bolt terminals

Samples Available

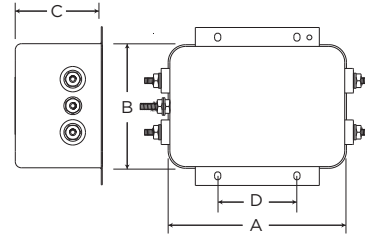


CASE STYLES

20EHT1



20EHT6



DIMENSIONS

Part Numbers	A (max)	B (max)	C (max)	D ± .015 ± .38
20EHT1	4.55	3.12	2.18	2.0
	<i>115.6</i>	<i>79.2</i>	<i>55.4</i>	<i>50.8</i>
20EHT6	4.55	3.12	2.18	2.0
	<i>115.6</i>	<i>79.2</i>	<i>55.4</i>	<i>50.8</i>

PERFORMANCE DATA

Minimum Insertion Loss - Measured in closed 50 Ohm system

Common Mode / Asymmetrical (Line to Ground)

Current Rating	Frequency — MHz										
	.01	.03	.05	.15	.5	1	2	5	10	20	30
20A	2	10	15	24	29	26	20	14	11	9	5

Differential Mode / Symmetrical (Line to Line)

Current Rating	Frequency — MHz										
	.01	.03	.05	.15	.5	1	2	5	10	20	30
20A	10	17	13	51	70	70	70	70	65	65	50

Dimensions in inches and millimeters unless otherwise shown. Values in italics are metric equivalents. Dimensions are shown for reference purposes only. Specifications subject to change. Customer drawing should be used for all design activity.

