



Chipsmall Limited consists of a professional team with an average of over 10 year of expertise in the distribution of electronic components. Based in Hongkong, we have already established firm and mutual-benefit business relationships with customers from,Europe,America and south Asia,supplying obsolete and hard-to-find components to meet their specific needs.

With the principle of “Quality Parts,Customers Priority,Honest Operation,and Considerate Service”,our business mainly focus on the distribution of electronic components. Line cards we deal with include Microchip,ALPS,ROHM,Xilinx,Pulse,ON,Everlight and Freescale. Main products comprise IC,Modules,Potentiometer,IC Socket,Relay,Connector.Our parts cover such applications as commercial,industrial, and automotives areas.

We are looking forward to setting up business relationship with you and hope to provide you with the best service and solution. Let us make a better world for our industry!



## Contact us

Tel: +86-755-8981 8866 Fax: +86-755-8427 6832

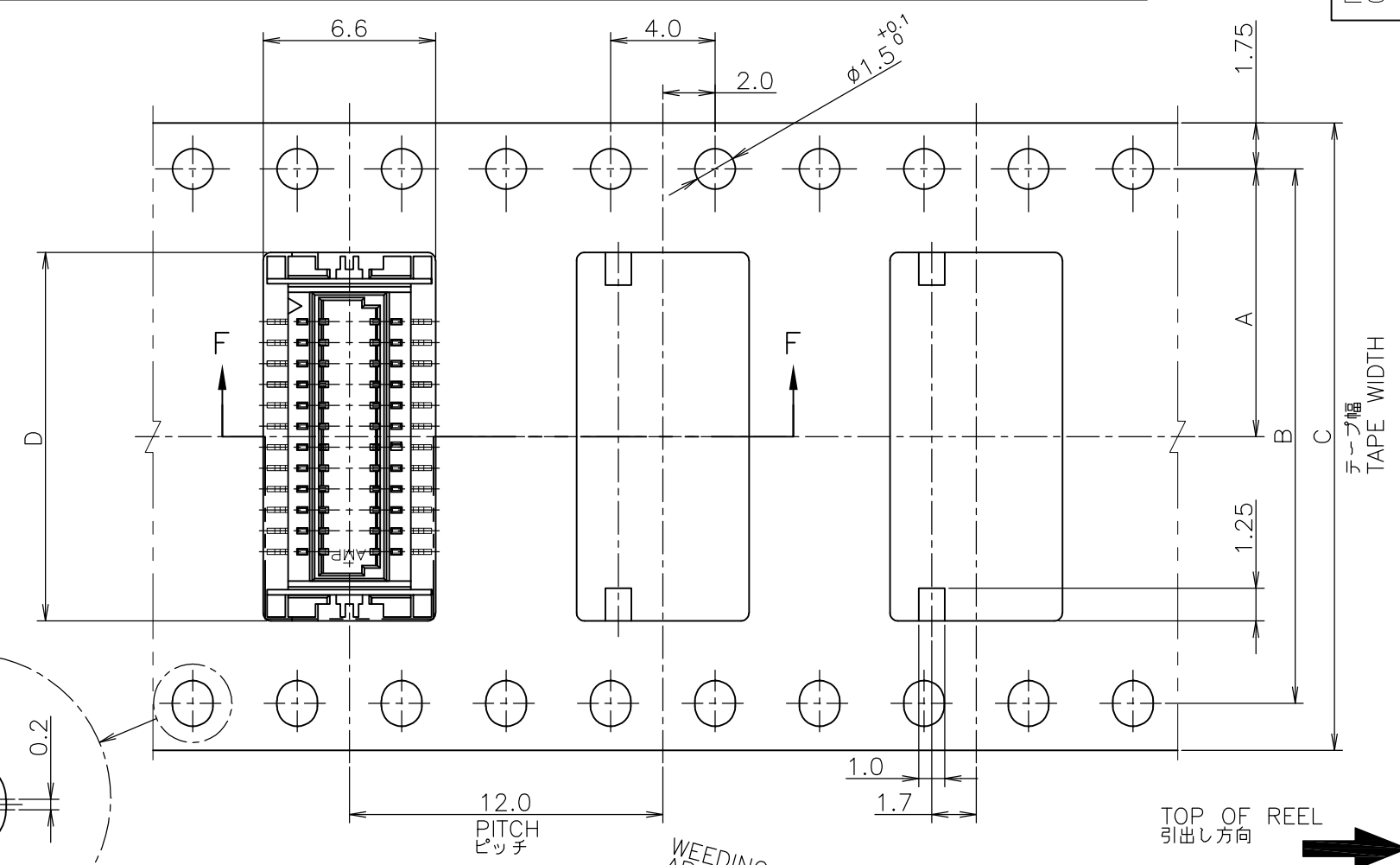
Email & Skype: info@chipsmall.com Web: www.chipsmall.com

Address: A1208, Overseas Decoration Building, #122 Zhenhua RD., Futian, Shenzhen, China



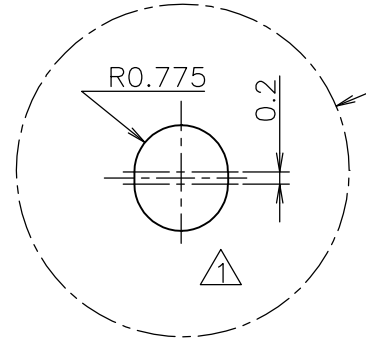
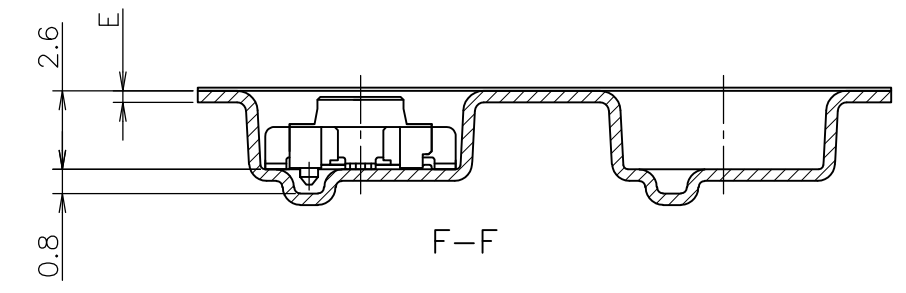
THIS DRAWING IS UNPUBLISHED. RELEASED FOR PUBLICATION FEB, 1994.  
 © COPYRIGHT 1994 By - ALL RIGHTS RESERVED.

LOC	DIST	REVISIONS					
ES		P	LTR	DESCRIPTION	DATE	DWN	APVD
			L2	REVISED PER ECO-11-005694	27OCT2011	B.L	S.Y

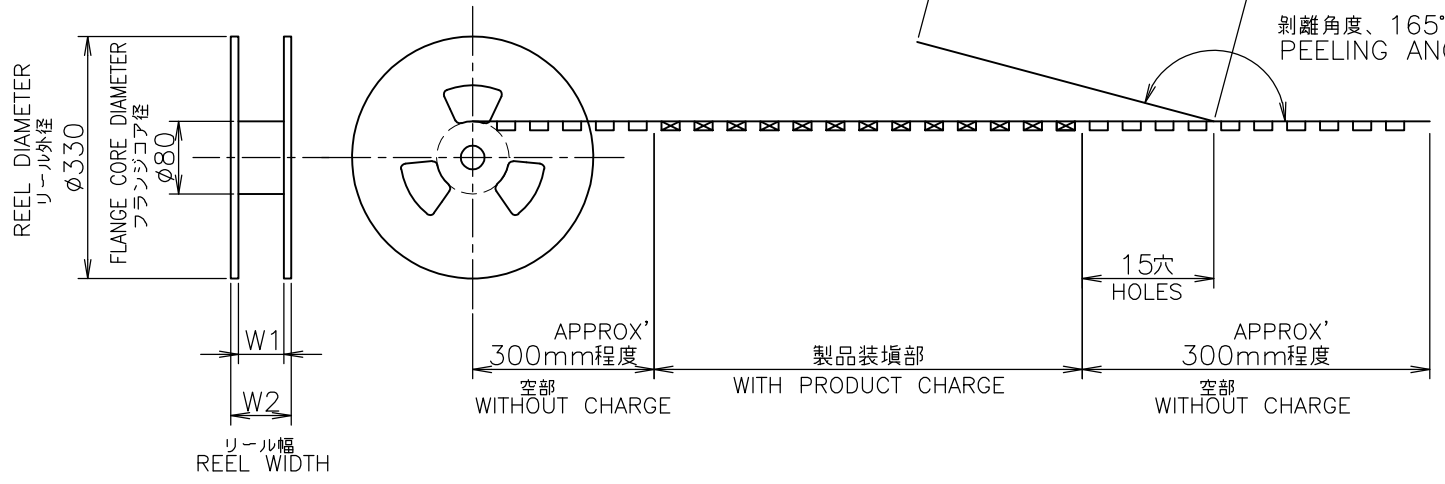


AS SHOWN 24POS.

△ 指示穴は40極品以上に適用。  
 △ THESE HOLES ARE APPLIED TO 40 POS OR MORE.



WEEDING THE COVER TAPE AROUND THE OUTER PERIPHERY IN A TURN.  
 カバーテープリーダー部外周一巻  
 剥離角度、165°~180° PEELING ANGLE.



BLACK	29.5	25.5	0.38	16.5	24	—	11.5	1500	30	3-179397-5				
OBSOLETE BEIGE	49.5	45.5	0.38	24.5	44	40.4	20.2	1500	50	5-179397-0				
OBSOLETE	↑	37.5	33.5	↑	20.5	32	28.4	14.2	↑	40	4-↑	-0		
		↑			16.5	↑				30	3-	-0		
		↑			29.5	25.5				14.1	24	2-	-4	
		↑			↑					10.9	↑		-6	
		↑			21.5	17.5	0.38	10.1		—		14	1-	-4
ベージュ	22.4	16.4	0.4	9.3	16	—	7.5	1500	12	1-179397-2				

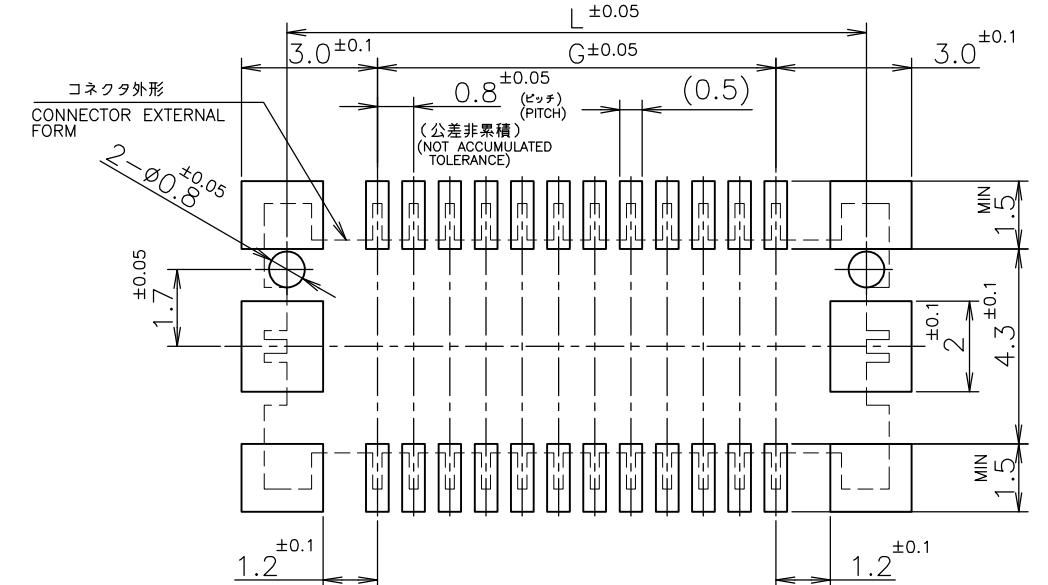
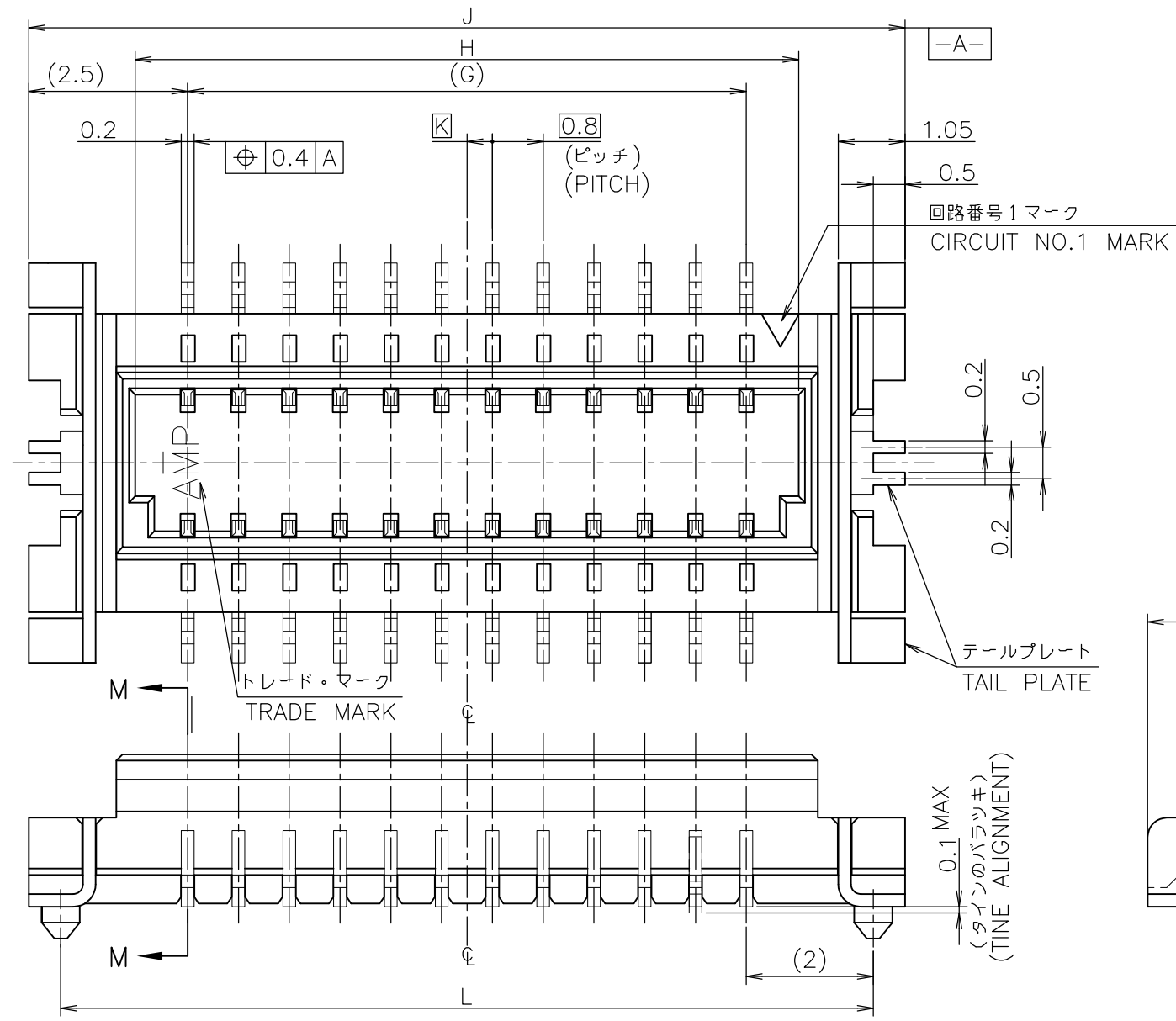
INSTRUCTION SHEET 411-5654

THIS DRAWING IS A CONTROLLED DOCUMENT.

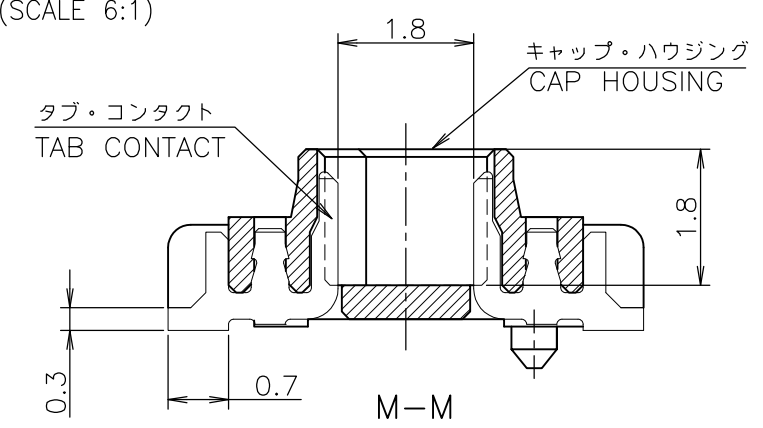
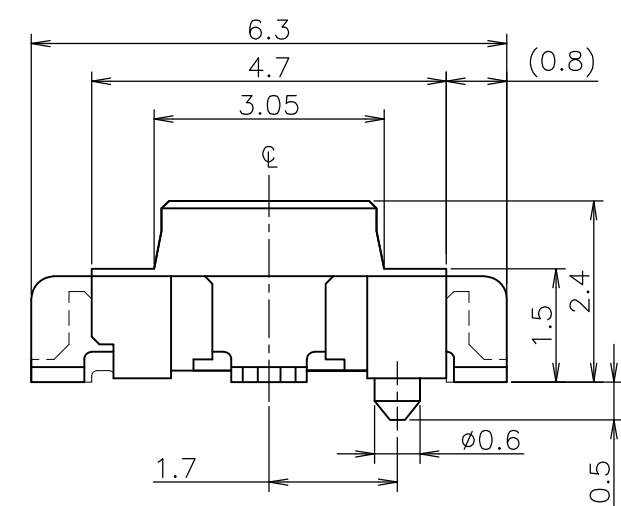
DIMENSIONS: 単位: 耗 mm	TOLERANCES UNLESS OTHERWISE SPECIFIED: 一般公差	DWN K.ASAKAWA 24FEB94	<b>STE</b> TE Connectivity
		CHK S.KUBOUCHI 24FEB94	
		APVD S.KUBOUCHI 01NOV96	
		PRODUCT SPEC 製品規格 108-5424	NAME 名称 ON TAPING EMBOSS CAP ASSEMBLY WITH BOSS
		APPLICATION SPEC 取付適用規格	0.8mm PITCH BOARD TO BOARD CONNECTOR
MATERIAL 材料	FINISH 仕上	WEIGHT	MATING HEIGHT 3.0mm
			SIZE A3 CAGE CODE 00779 DRAWING NO. C-179397 RESTRICTED TO
			CUSTOMER DRAWING SCALE 4:1 SHEET 1 OF 2 REV L2

THIS DRAWING IS UNPUBLISHED. RELEASED FOR PUBLICATION FEB, 1994.  
 © COPYRIGHT 1994 By - ALL RIGHTS RESERVED.

LOC	DIST	REVISIONS			DATE	DWN	APVD
		P	LTR	DESCRIPTION			
ES		-		SEE SHEET 1	-	-	-



参考基板加工寸法 (t=0.6 MIN.)  
 REFERENCE P.C. BOARD LAYOUT (SCALE 6:1)



0.241	15.2	—//—	16.2	12.8	11.2	30
-0.361	23.2	—//—	24.2	20.8	19.2	50
-0.301	19.2	0.4	20.2	16.8	15.2	40
0.241	15.2	—//—	16.2	12.8	11.2	30
0.205	12.8	0.4	13.8	10.4	8.8	24
0.157	9.6	0.4	10.6	7.2	5.6	16
0.145	8.8	—//—	9.8	6.4	4.8	14
0.133	8.0	0.4	9.0	5.6	4.0	12
重量 (g) WEIGHT	L	K	J	H	G	極数 POS

△ 材料: ハウジング - 6T NYLON (高耐熱性ナイロン)  
 ガラス30%, 色: ベージュ  
 コンタクト - 燐青銅・錫めっき (0.2t)  
 テールプレート - 燐青銅・錫めっき (0.2t)

△ MATERIAL: HOUSING - 6T NYLON (HIGH HEAT-RESISTED NYLON), GF30%,  
 COLOR: BEIGE.  
 CONTACT - POST-TIN/PHOS-BROZ (0.2t)  
 TAIL PLATE - POST-TIN/PHOS-BROZ (0.2t)

THIS DRAWING IS A CONTROLLED DOCUMENT.

DIMENSIONS: 単位: 耗 mm	TOLERANCES UNLESS OTHERWISE SPECIFIED: 一般公差	DWN	TE Connectivity		
	0 PLC ± 0.2	CHK	NAME 名称		
	1 PLC ± 0.2	APVD	ON TAPING EMBOSS CAP ASSEMBLY WITH BOSS		
	2 PLC ± 0.2	PRODUCT SPEC	0.8mm PITCH BOARD TO BOARD CONNECTOR		
	3 PLC ± 0.2	APPLICATION SPEC	MATING HEIGHT 3.0mm		
	4 PLC ± 0.2	取付適用規格	SIZE	CAGE CODE	DRAWING NO
	ANGLES ± 3'	WEIGHT	A3	00779	G-179397
MATERIAL 材料	FINISH 仕上	CUSTOMER DRAWING		RESTRICTED TO	番号
SEE NOTE 2 注 2 参照	SEE NOTE 2 注 2 参照	SCALE 尺度 10:1		SHEET 2 OF 2	REV L2