



Chipsmall Limited consists of a professional team with an average of over 10 year of expertise in the distribution of electronic components. Based in Hongkong, we have already established firm and mutual-benefit business relationships with customers from,Europe,America and south Asia,supplying obsolete and hard-to-find components to meet their specific needs.

With the principle of “Quality Parts,Customers Priority,Honest Operation,and Considerate Service”,our business mainly focus on the distribution of electronic components. Line cards we deal with include Microchip,ALPS,ROHM,Xilinx,Pulse,ON,Everlight and Freescale. Main products comprise IC,Modules,Potentiometer,IC Socket,Relay,Connector.Our parts cover such applications as commercial,industrial, and automotives areas.

We are looking forward to setting up business relationship with you and hope to provide you with the best service and solution. Let us make a better world for our industry!



Contact us

Tel: +86-755-8981 8866 Fax: +86-755-8427 6832

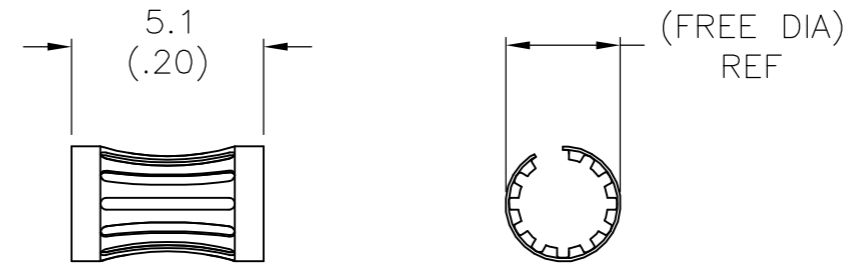
Email & Skype: info@chipsmall.com Web: www.chipsmall.com

Address: A1208, Overseas Decoration Building, #122 Zhenhua RD., Futian, Shenzhen, China

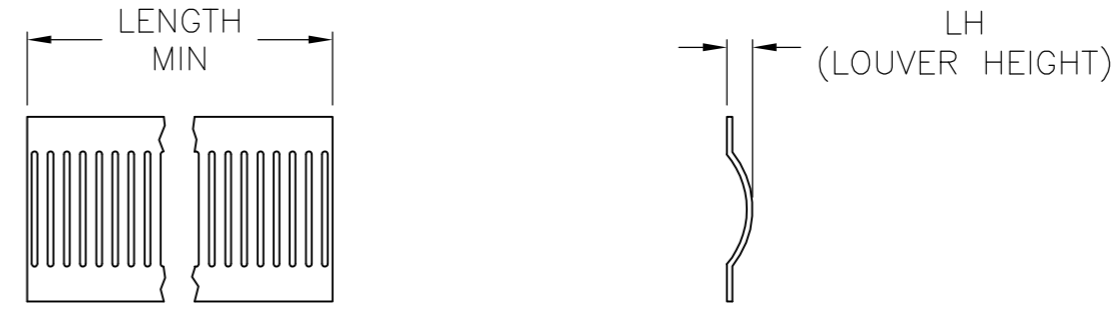


THIS DRAWING IS UNPUBLISHED. RELEASED FOR PUBLICATION
 © COPYRIGHT - By - ALL RIGHTS RESERVED.

LOC		DIST		REVISIONS			
FT	0	P	LTR	DESCRIPTION	DATE	DWN	APVD
		U		REVISED PER ECO-15-012365	17NOV2015	NK	MZ



STYLE A
(FEMALE)



STYLE C
(STRIP)

STYLE	(FREE DIA)	LH	LENGTH	MAT'L (NOTE)	MATING PIN	φ REF	PLATING NOTE NO.	NUM LOUV	MAT'L THK	REF	PART NO.	
A	[.83]	[.022]	--	12	19	[.750]	3-2	82	0.12	[.005]	05043 5-192046-0	OBSOLETE
A	[.83]	[.022]	--	12	19	[.750]	UNPL	82	0.12	[.005]	05115 4-192046-9	OBSOLETE
A	[.76]	[.022]	--	12	16.8	[.660]	UNPL	75	0.12	[.005]	05141 4-192046-8	OBSOLETE
A	[.73]	[.016]	--	13	15.9	[.625]	3-2	71	0.12	[.005]	05175 4-192046-7	OBSOLETE
A	[.73]	[.018]	--	12	15.9	[.625]	4-2	71	0.12	[.005]	05174 4-192046-6	OBSOLETE
A	[.73]	[.022]	--	12	15.3	[.602]	3-2	67	0.12	[.005]	05049 4-192046-5	OBSOLETE
A	[.73]	[.022]	--	12	15.2	[.600]	UNPL	67	0.12	[.005]	05065 4-192046-4	OBSOLETE
A	[.73]	[.018]	--	12	14.8	[.584]	3-2	65	0.15	[.006]	05022 4-192046-3	OBSOLETE
A	[.70]	[.018]	--	12	13	[.514]	UNPL	58	0.12	[.005]	05102 4-192046-2	OBSOLETE
A	[.57]	--	--	12	12.7	[.500]	1-2	57	0.20	[.008]	05182 4-192046-1	OBSOLETE
A	[.68]	[.016]	--	13	12.7	[.500]	UNPL	57	0.12	[.005]	05176 4-192046-0	OBSOLETE
A	[.68]	[.018]	--	12	12.7	[.500]	1-2	57	0.12	[.005]	05143 3-192046-9	OBSOLETE
											05184 3-192046-8	OBSOLETE
A	[.68]	[.018]	--	12	12.7	[.499]	4-2	56	0.15	[.006]	05144 3-192046-7	OBSOLETE
A	[.64]	[.022]	--	14	12.4	[.490]	1-2	56	0.12	[.005]	05135 3-192046-6	OBSOLETE
A	[.64]	[.022]	--	14	12.4	[.490]	UNPL	56	0.12	[.005]	05138 3-192046-5	OBSOLETE
--	[.64]	[.022]	--	14	12.4	[.490]	1-2	56	0.10	[.004]	05148 3-192046-4	OBSOLETE
A	[.64]	[.022]	--	14	12.4	[.490]	UNPL	56	0.10	[.004]	05151 3-192046-3	OBSOLETE
--	[.55]	[.018]	--	12	12.3	[.486]	UNPL	56	0.12	[.005]	05099 3-192046-2	OBSOLETE
A	[.50]	[.022]	--	13	11.6	[.458]	UNPL	51	0.12	[.005]	05145 3-192046-1	
A	[.44]	[.022]	--	12	10.2	[.400]	3-2	44	0.12	[.005]	05029 3-192046-0	
A	[.44]	[.022]	--	12	10.2	[.400]	UNPL	44	0.12	[.005]	05066 2-192046-9	OBSOLETE
A	[.42]	[.018]	--	12	9.5	[.375]	3-2	42	0.15	[.006]	05019 2-192046-8	OBSOLETE
A	--	--	--	12	9.5	[.375]	UNPL	42	0.15	[.006]	05032 2-192046-7	OBSOLETE
A	[.42]	--	--	13	9.5	[.375]	1-2	42	0.12	[.005]	05137 2-192046-6	OBSOLETE
A	[.38]	--	--	12	7.9	[.312]	6	36	0.15	[.006]	05133 2-192046-5	OBSOLETE
A	[.38]	--	--	12	7.9	[.312]	3-2	36	0.15	[.006]	05120 2-192046-4	OBSOLETE
A	[.34]	--	--	12	7.5	[.297]	3-2	34	0.15	[.006]	05122 2-192046-3	OBSOLETE
							--				2-192046-2	OBSOLETE
A	[.32]	[.018]	--	12	6.9	[.270]	1-2	31	0.12	[.005]	05077 2-192046-1	OBSOLETE
A	[.33]	[.018]	--	12	6.3	[.250]	6	28	0.15	[.006]	05040 2-192046-0	
A	[.33]	[.018]	--	12	6.3	[.250]	3-2	28	0.15	[.006]	05064 1-192046-9	
SUPERSEDED BY 9-192046-4											05054 1-192046-8	SUPERSEDED BY 9-192046-4
A	[.33]	[.018]	--	12	6.3	[.250]	UNPL	28	0.15	[.006]	05038 1-192046-7	OBSOLETE
A	[.27]	[.018]	--	12	5.7	[.225]	4-2	25	0.15	[.006]	05051 1-192046-6	
A	[.27]	[.018]	--	12	5.7	[.225]	1-2	25	0.15	[.006]	05163 1-192046-5	OBSOLETE
A	[.27]	[.018]	--	12	5.7	[.225]	UNPL	25	0.15	[.006]	05046 1-192046-4	OBSOLETE
A	[.34]	[.022]	--	14	5.1	[.200]	3-2	24	0.12	[.005]	05157 1-192046-3	OBSOLETE
A	[.34]	[.022]	--	14	5.1	[.200]	UNPL	24	0.12	[.005]	05156 1-192046-2	OBSOLETE
A	[.24]	[.018]	--	12	5	[.197]	1-2	22	0.15	[.006]	05147 1-192046-1	OBSOLETE
A	[.24]	[.018]	--	12	5	[.197]	UNPL	22	0.15	[.006]	05146 1-192046-0	OBSOLETE
A	[.23]	[.018]	--	12	4.7	[.187]	3-2	21	0.15	[.006]	05050 192046-9	OBSOLETE
A	[.23]	[.018]	--	12	4.7	[.187]	1-2	21	0.15	[.006]	05103 192046-8	OBSOLETE
A	[.23]	[.022]	--	12	4.7	[.187]	3-2	21	0.12	[.005]	05016 192046-7	OBSOLETE
A	[.22]	[.018]	--	12	4.4	[.172]	3-2	20	0.15	[.006]	05015 192046-6	
A	[.22]	[.018]	--	12	4.4	[.172]	1-2	20	0.15	[.006]	05162 192046-5	OBSOLETE
A	[.22]	[.018]	--	12	4.4	[.172]	UNPL	20	0.15	[.006]	05155 192046-4	OBSOLETE
A	[.19]	[.018]	--	12	4.1	[.160]	5-2	18	0.10	[.004]	05114 192046-3	OBSOLETE
A	[.19]	[.018]	--	12	4.1	[.160]	UNPL	18	0.10	[.004]	05113 192046-2	OBSOLETE
A	[.19]	[.018]	--	12	4	[.157]	4-2	18	0.15	[.006]	05134 192046-1	OBSOLETE

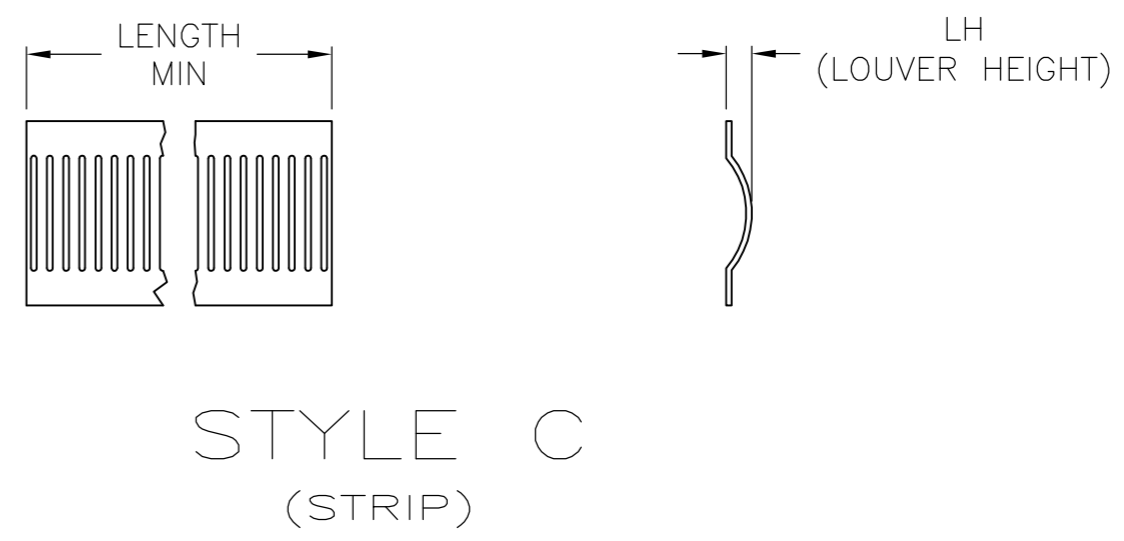
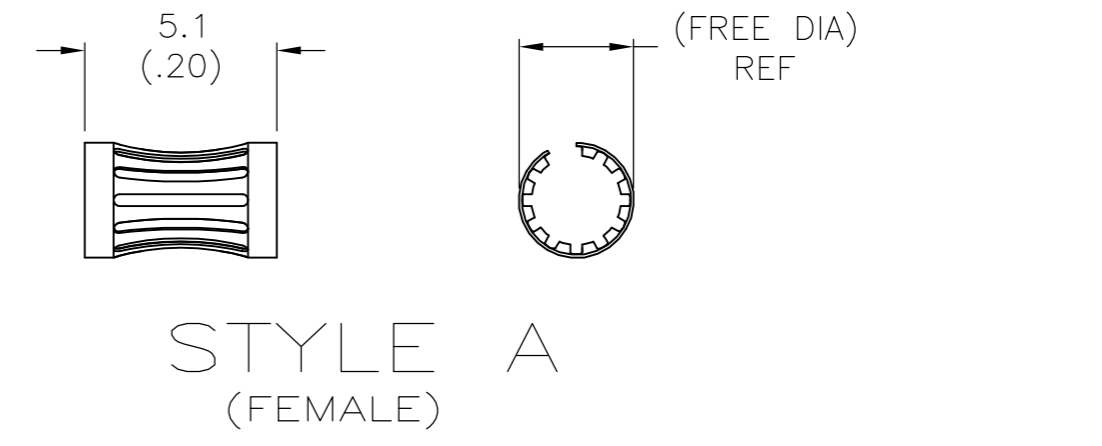
- 1 FINISH: SILVER PLATE 200uIN THICK MIN.
 - 2 FINISH: NICKEL PLATE 40uIN THICK MIN.
 - 3 FINISH: GOLD PLATE 10uIN THICK MIN.
 - 4 FINISH: GOLD PLATE 50uIN THICK MIN.
 - 5 FINISH: GOLD PLATE 20uIN THICK MIN.
 - 6 FINISH: TIN PLATE 300uIN THICK MIN.
 - 7 -
 - 8 FINISH: GOLD PLATE 30uIN THICK MIN.
 - 9 -
 - 10 -
 - 11 PLATING NOTES ARE TO BE INTERPRETED AS FOLLOWS 6-8 AS 6 OVER 8.
 - 12 MATERIAL: CDA17200, BeCu.
 - 13 MATERIAL: STAINLESS STEEL
 - 14 MATERIAL: CDA17410, BeCu.
 - 15 FINISH: HARD GOLD OVER NICKEL PLATE.
- △ OBSOLETE PARTS: OBSOLETE CIS STREAMLINING PER D.RENAUD/D.SINISI

THIS DRAWING IS A CONTROLLED DOCUMENT.		DWN -	TE Connectivity	
DIMENSIONS: mm		CHK J.TURNER	08-04-93	
TOLERANCES UNLESS OTHERWISE SPECIFIED:		APVD -	NAME	
0 PLC ± -		PRODUCT SPEC -	CONTACT BAND,FEMALE	
1 PLC ± -		APPLICATION SPEC -	SIZE	CAGE CODE
2 PLC ± 0.5 [.02]		WEIGHT -	A2	00779
3 PLC ± 0.25 [.010]		CUSTOMER DRAWING	DRAWING NO	RESTRICTED TO
4 PLC ± -		SCALE 1:1	C=192046	1 OF 2
ANGLES ± -		SHEET	REV	U

THIS DRAWING IS UNPUBLISHED. RELEASED FOR PUBLICATION
 © COPYRIGHT - By - ALL RIGHTS RESERVED.

LOC	DIST	REVISIONS					
FT	0	P	LTR	DESCRIPTION	DATE	DWN	APVD
		-		SEE SHEET 1	-	-	-

A	[.34]	[.022]	--	12	5.1[.200]	3-2	24	0.12[.005]	--	9-192046-9	OBSOLETE
A	[.19]	[.022]	--	12	3.4[.134]	UNPL	15	0.15[.006]	--	9-192046-8	OBSOLETE
A	[.19]	[.022]	--	12	3.4[.134]	8-2	16	0.15[.006]	--	9-192046-7	OBSOLETE
A	[.19]	[.022]	--	12	3.4[.134]	8-2	16	0.15[.006]	--	9-192046-6	
A	[.19]	[.022]	--	12	3.4[.134]	UNPL	15	0.15[.006]	--	9-192046-5	OBSOLETE
A	[.35]	[.018]	--	12	6[.236]	1-2	27	0.15[.006]	--	9-192046-4	OBSOLETE
A	[.45]	[.018]	--	12	9[.354]	1-2	40	0.15[.006]	--	9-192046-3	OBSOLETE
A	[.19]	[.018]	--	12	3.17[.125]	1-2	15	0.15[.006]	--	9-192046-2	OBSOLETE
A	[.12]	[.018]	--	12	1.9[.075]	15	10	0.08[.003]	--	9-192046-1	OBSOLETE
A	[.12]	[.018]	--	12	1.9[.075]	UNPL	10	0.08[.003]	--	9-192046-0	OBSOLETE
A	[.32]	[.022]	--	12	5.7[.225]	UNPL	25	0.15[.006]	--	8-192046-9	
A	[.21]	[.022]	--	12	5.4[.211]	UNPL	19	0.12[.005]	--	8-192046-8	
A	[1.66]	[.022]	--	12	38.1[1.500]	UNPL	168	0.15[.006]	--	8-192046-7	
A	[1.10]	[.018]	--	12	23.7[.934]	UNPL	105	0.12[.005]	--	8-192046-6	
A	[.73]	[.016]	--	13	15.9[.625]	UNPL	71	0.12[.005]	--	8-192046-5	OBSOLETE
A	[.73]	[.018]	--	12	15.9[.625]	UNPL	71	0.12[.005]	--	8-192046-4	
A	[.73]	[.018]	--	12	14.8[.584]	UNPL	65	0.15[.006]	--	8-192046-3	
A	[.68]	[.018]	--	12	12.7[.500]	UNPL	57	0.12[.005]	--	8-192046-2	
A	[.68]	[.018]	--	12	12.7[.500]	UNPL	56	0.15[.006]	--	8-192046-1	OBSOLETE
--	--	--	--	--	--	--	--	--	--	8-192046-0	
A	[.32]	[.018]	--	12	6.9[.270]	UNPL	31	0.12[.005]	--	7-192046-9	
A	[.23]	[.018]	--	12	4.7[.187]	UNPL	21	0.15[.006]	--	7-192046-8	
A	[.19]	[.018]	--	12	4.5[.157]	UNPL	18	0.15[.006]	05189	7-192046-7	
--	--	--	--	--	--	--	--	--	--	7-192046-6	
A	[.45]	[.018]	--	12	9[.354]	1-2	40	0.20[.008]	--	7-192046-5	
A	[.45]	[.018]	--	12	9[.354]	UNPL	40	0.20[.008]	--	7-192046-4	
A	[.16]	[.018]	--	12	3[.118]	1-2	14	0.20[.008]	--	7-192046-3	
A	[.16]	[.018]	--	12	3[.118]	UNPL	14	0.20[.008]	--	7-192046-2	
SUPERSEDED BY 9-192046-3											
A	[.45]	[.018]	--	12	9[.354]	UNPL	40	0.15[.006]	--	7-192046-0	
A	[.16]	[.018]	--	12	3[.118]	1-2	14	0.15[.006]	--	6-192046-9	
A	[.16]	[.018]	--	12	3[.118]	UNPL	14	0.15[.006]	--	6-192046-8	
A	[.45]	[.018]	--	12	9[.354]	1-2	40	0.12[.005]	--	6-192046-7	
A	[.45]	[.018]	--	12	9[.354]	UNPL	40	0.12[.005]	--	6-192046-6	
A	[.16]	[.018]	--	12	3[.118]	1-2	14	0.12[.005]	--	6-192046-5	
A	[.16]	[.018]	--	12	3[.118]	UNPL	14	0.12[.005]	--	6-192046-4	
A	[.32]	[.022]	--	12	5.7[.225]	4-2	25	0.15[.006]	--	6-192046-3	OBSOLETE
A	[.21]	[.022]	--	12	5.4[.211]	1-2	19	0.12[.005]	--	6-192046-2	OBSOLETE
SUPERSEDED BY 6-192044-0											
A	[.18]	[.022]	--	12	3.4[.134]	UNPL	16	0.20[.008]	--	6-192046-0	OBSOLETE
A	[.19]	[.022]	--	12	3.4[.134]	4-2	16	0.15[.006]	--	5-192046-9	
A	[.19]	[.022]	--	12	3.4[.134]	UNPL	16	0.15[.006]	--	5-192046-8	OBSOLETE
A	--	[.022]	--	12	110.2[4.340]	1-2	--	0.12[.005]	05088	5-192046-7	OBSOLETE
A	--	[.022]	--	12	91.4[3.600]	3-2	--	0.15[.006]	05067	5-192046-6	OBSOLETE
A	[1.66]	[.022]	--	12	38.1[1.500]	3-2	168	0.15[.006]	05045	5-192046-5	OBSOLETE
A	[1.10]	[.018]	--	12	23.7[.934]	1-2	105	0.12[.005]	05078	5-192046-4	OBSOLETE
A	[1.10]	[.022]	--	12	22.7[.895]	UNPL	102	0.12[.005]	05082	5-192046-3	OBSOLETE
A	[1.20]	[.022]	--	12	20[.788]	UNPL	89	0.12[.005]	05129	5-192046-2	OBSOLETE
									05081	5-192046-1	OBSOLETE



THIS DRAWING IS A CONTROLLED DOCUMENT.

DWN: J. TURNER 08-04-93

CHK: J. TURNER

APVD: -

PRODUCT SPEC: -

APPLICATION SPEC: -

WEIGHT: -

CUSTOMER DRAWING

SCALE: 1:1 SHEET: 2 OF 2 REV: U

TE Connectivity

CONTACT BAND, FEMALE

SIZE: A2 CAGE CODE: 00779 DRAWING NO: C=192046 RESTRICTED TO: -

192046