



Chipsmall Limited consists of a professional team with an average of over 10 year of expertise in the distribution of electronic components. Based in Hongkong, we have already established firm and mutual-benefit business relationships with customers from,Europe,America and south Asia,supplying obsolete and hard-to-find components to meet their specific needs.

With the principle of "Quality Parts,Customers Priority,Honest Operation,and Considerate Service",our business mainly focus on the distribution of electronic components. Line cards we deal with include Microchip,ALPS,ROHM,Xilinx,Pulse,ON,Everlight and Freescale. Main products comprise IC,Modules,Potentiometer,IC Socket,Relay,Connector.Our parts cover such applications as commercial,industrial, and automotives areas.

We are looking forward to setting up business relationship with you and hope to provide you with the best service and solution. Let us make a better world for our industry!



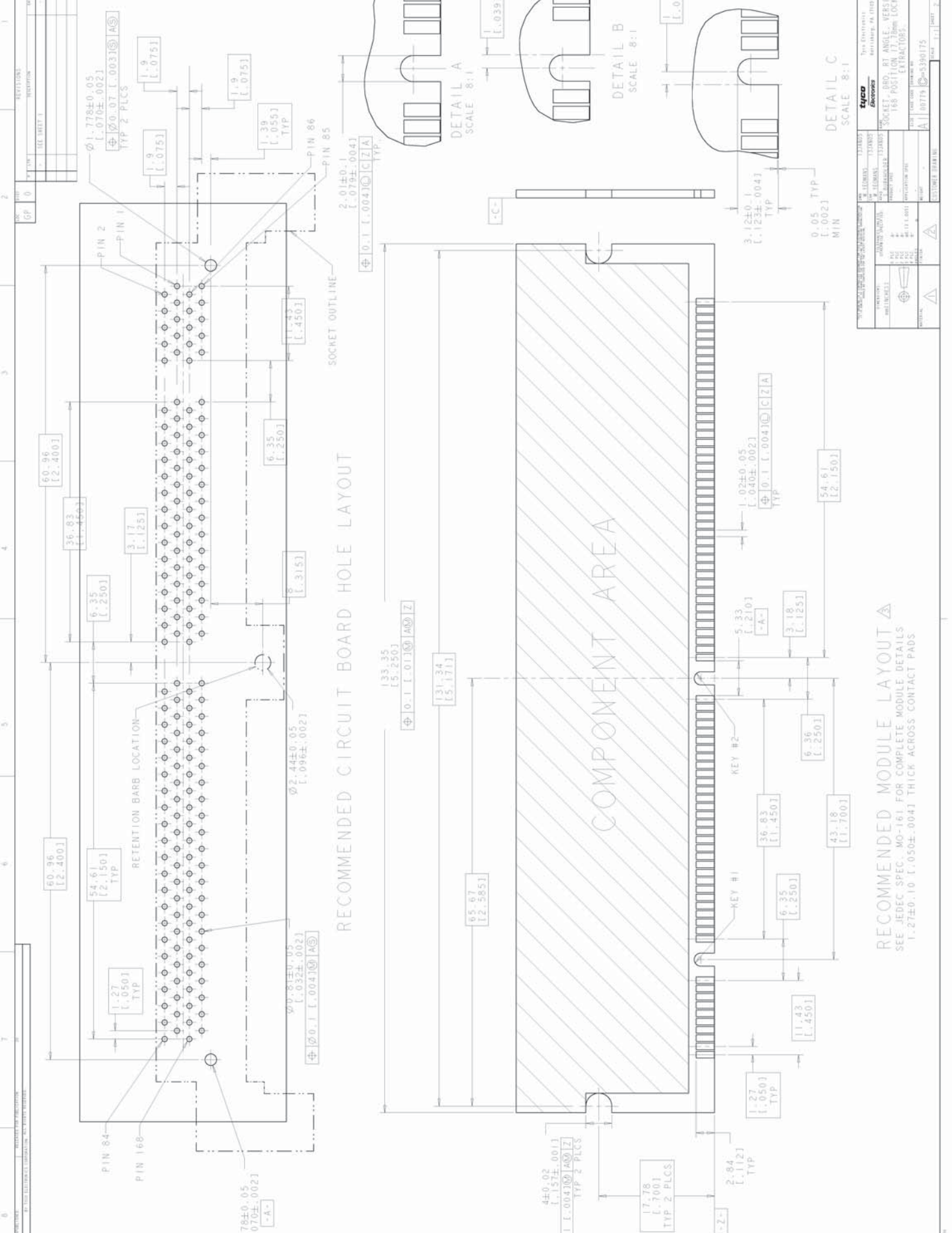
Contact us

Tel: +86-755-8981 8866 Fax: +86-755-8427 6832

Email & Skype: info@chipsmall.com Web: www.chipsmall.com

Address: A1208, Overseas Decoration Building, #122 Zhenhua RD., Futian, Shenzhen, China





RECOMMENDED CIRCUIT BOARD HOLE LAYOUT

RECOMMENDED MODULE LAYOUT
 SEE JEDEC SPEC. MO-16.1 FOR COMPLETE MODULE DETAILS
 1.27±0.10 [0.050±.004] THICK ACROSS CONTACT PADS

REV. NO.		DESCRIPTION	
0	1	SEE SHEET 1	
DATE		DRAWN BY	
GP		DESIGNER	
1		2	
3		4	
5		6	
7		8	
9		10	
11		12	
13		14	
15		16	
17		18	
19		20	
21		22	
23		24	
25		26	
27		28	
29		30	
31		32	
33		34	
35		36	
37		38	
39		40	
41		42	
43		44	
45		46	
47		48	
49		50	
51		52	
53		54	
55		56	
57		58	
59		60	
61		62	
63		64	
65		66	
67		68	
69		70	
71		72	
73		74	
75		76	
77		78	
79		80	
81		82	
83		84	
85		86	
87		88	
89		90	
91		92	
93		94	
95		96	
97		98	
99		100	
101		102	
103		104	
105		106	
107		108	
109		110	
111		112	
113		114	
115		116	
117		118	
119		120	
121		122	
123		124	
125		126	
127		128	
129		130	
131		132	
133		134	
135		136	
137		138	
139		140	
141		142	
143		144	
145		146	
147		148	
149		150	
151		152	
153		154	
155		156	
157		158	
159		160	
161		162	
163		164	
165		166	
167		168	
169		170	
171		172	
173		174	
175		176	
177		178	
179		180	
181		182	
183		184	
185		186	
187		188	
189		190	
191		192	
193		194	
195		196	
197		198	
199		200	
201		202	
203		204	
205		206	
207		208	
209		210	
211		212	
213		214	
215		216	
217		218	
219		220	
221		222	
223		224	
225		226	
227		228	
229		230	
231		232	
233		234	
235		236	
237		238	
239		240	
241		242	
243		244	
245		246	
247		248	
249		250	
251		252	
253		254	
255		256	
257		258	
259		260	
261		262	
263		264	
265		266	
267		268	
269		270	
271		272	
273		274	
275		276	
277		278	
279		280	
281		282	
283		284	
285		286	
287		288	
289		290	
291		292	
293		294	
295		296	
297		298	
299		300	
301		302	
303		304	
305		306	
307		308	
309		310	
311		312	
313		314	
315		316	
317		318	
319		320	
321		322	
323		324	
325		326	
327		328	
329		330	
331		332	
333		334	
335		336	
337		338	
339		340	
341		342	
343		344	
345		346	
347		348	
349		350	
351		352	
353		354	
355		356	
357		358	
359		360	
361		362	
363		364	
365		366	
367		368	
369		370	
371		372	
373		374	
375		376	
377		378	
379		380	
381		382	
383		384	
385		386	
387		388	
389		390	
391		392	
393		394	
395		396	
397		398	
399		400	
401		402	
403		404	
405		406	
407		408	
409		410	
411		412	
413		414	
415		416	
417		418	
419		420	
421		422	
423		424	
425		426	
427		428	
429		430	
431		432	
433		434	
435		436	
437		438	
439		440	
441		442	
443		444	
445		446	
447		448	
449		450	
451		452	
453		454	
455		456	
457		458	
459		460	
461		462	
463		464	
465		466	
467		468	
469		470	
471		472	
473		474	
475		476	
477		478	
479		480	
481		482	
483		484	
485		486	
487		488	
489		490	
491		492	
493		494	
495		496	
497		498	
499		500	
501		502	
503		504	
505		506	
507		508	
509		510	
511		512	
513		514	
515		516	
517		518	
519		520	
521		522	
523		524	
525		526	
527		528	
529		530	
531		532	
533		534	
535		536	
537		538	
539		540	
541		542	
543		544	
545		546	
547		548	
549		550	
551		552	
553		554	
555		556	
557		558	
559		560	
561		562	
563		564	
565		566	
567		568	
569		570	
571		572	
573		574	
575		576	
577		578	
579		580	
581		582	
583		584	
585		586	
587		588	
589		590	
591		592	
593		594	
595		596	
597		598	
599		600	
601		602	
603		604	
605		606	
607		608	
609		610	
611		612	
613		614	
615		616	
617		618	
619		620	
621		622	
623		624	
625		626	
627		628	
629		630	
631		632	
633		634	
635		636	
637		638	
639		640	
641		642	
643		644	
645		646	
647		648	
649		650	
651		652	
653		654	
655		656	
657		658	
659		660	
661		662	
663		664	
665		666	
667		668	
669		670	
671		672	
673		674	
675		676	
677		678	
679		680	
681		682	
683		684	
685		686	
687		688	
689		690	
691		692	
693		694	
695		696	
697		698	
699		700	
701		702	
703		704	
705		706	
707		708	
709		710	
711		712	
713		714	
715		716	
717		718	
719		720	
721		722	
723		724	
725		726	
727		728	
729		730	
731		732	
733		734	
735		736	
737		738	
739		740	
741		742	
743		744	
745		746	
747		748	
749		750	
751		752	
753		754	
755		756	
757		758	
759		760	
761		762	
763		764	
765		766	
767		768	
769		770	
771		772	
773		774	
775		776	
777		778	
77			

REV	DATE	DESCRIPTION
0		
1		SEE SHEET 1
2		
3		
4		
5		
6		
7		

TYPE	Y-Y	DIM-G REF	DIM-F REF	DIM-H	DIM-BA	KEY #1	KEY #2	PART DESCRIPTION	PART NUMBER
NB	3-3	7.11 [.280]	10.41 [.410]	2.84 [.112]	3.81 [.150]	DETAIL C	DETAIL A	SYNC. NON-BUFFERED DRAM, 3.3 VOLT	5-5390175-6 ⁵
NB	3-3	9.27 [.365]	12.57 [.495]	2.84 [.112]	5.97 [.235]	DETAIL C	DETAIL A	SYNC. NON-BUFFERED DRAM, 3.3 VOLT	4-5390175-6 ⁶
NB	3-3	9.27 [.365]	12.57 [.495]	2.84 [.112]	5.97 [.235]	DETAIL B	DETAIL A	SYNC. NON-BUFFERED DRAM, 3.3 VOLT	3-5390175-6
SYNC	3-3	9.27 [.365]	12.57 [.495]	2.84 [.112]	5.97 [.235]	DETAIL C	DETAIL A	SYNC. DRAM, 3.3 VOLT	3-5390175-5
NB	3-3	7.11 [.280]	10.41 [.410]	2.84 [.112]	3.81 [.150]	DETAIL C	DETAIL A	SYNC. NON-BUFFERED DRAM, 3.3 VOLT	2-5390175-6
NB	3-3	9.27 [.365]	12.57 [.495]	1.96 [.077]	5.97 [.235]	DETAIL C	DETAIL A	SYNC. NON-BUFFERED DRAM, 3.3 VOLT	1-5390175-6
NB	3-3	10.92 [.430]	14.22 [.560]	3.18 [.125]	7.62 [.300]	DETAIL C	DETAIL A	SYNC. NON-BUFFERED DRAM, 3.3 VOLT	5390175-6
TYPE	Y-Y	DIM-G REF	DIM-F REF	DIM-H	DIM-BA	KEY #1	KEY #2	PART DESCRIPTION	PART NUMBER

OBSOLETE

tyco
 Tyco Electronics
 A Division of Tyco International Limited
 165 SOUTH ST. WILMINGTON, DE 19880
 TEL: 302-435-2000 FAX: 302-435-2001
 WWW.TYCOELECTRONICS.COM

DRAWING NO. 5390175-6
 REV. 01
 DATE 01/11/00

TITLE: SOCKET - BRO, RT ANGLE, VERSION 11, 168 POSITION, 17.0mm LOCKING, EXTRACTORLESS

PART NUMBER: 5390175-6
 REV: 01
 DATE: 01/11/00

DRAWING NO. 5390175-6
 REV. 01
 DATE 01/11/00

TITLE: SOCKET - BRO, RT ANGLE, VERSION 11, 168 POSITION, 17.0mm LOCKING, EXTRACTORLESS

PART NUMBER: 5390175-6
 REV: 01
 DATE: 01/11/00