



Chipsmall Limited consists of a professional team with an average of over 10 year of expertise in the distribution of electronic components. Based in Hongkong, we have already established firm and mutual-benefit business relationships with customers from,Europe,America and south Asia,supplying obsolete and hard-to-find components to meet their specific needs.

With the principle of "Quality Parts,Customers Priority,Honest Operation,and Considerate Service",our business mainly focus on the distribution of electronic components. Line cards we deal with include Microchip,ALPS,ROHM,Xilinx,Pulse,ON,Everlight and Freescale. Main products comprise IC,Modules,Potentiometer,IC Socket,Relay,Connector.Our parts cover such applications as commercial,industrial, and automotives areas.

We are looking forward to setting up business relationship with you and hope to provide you with the best service and solution. Let us make a better world for our industry!



Contact us

Tel: +86-755-8981 8866 Fax: +86-755-8427 6832

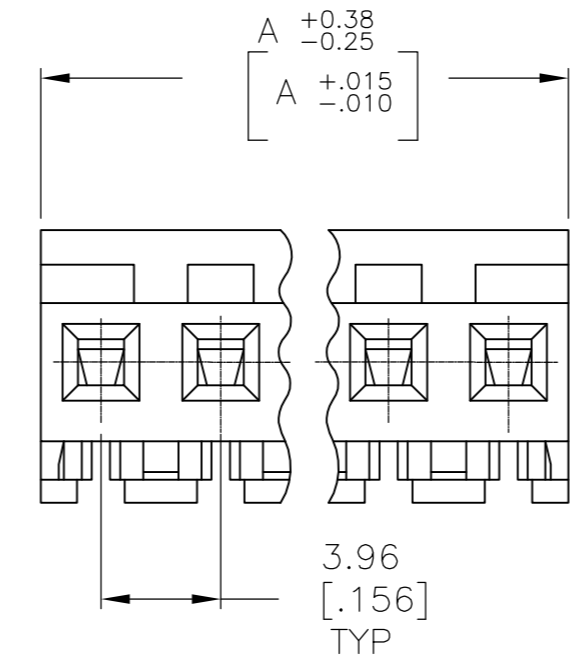
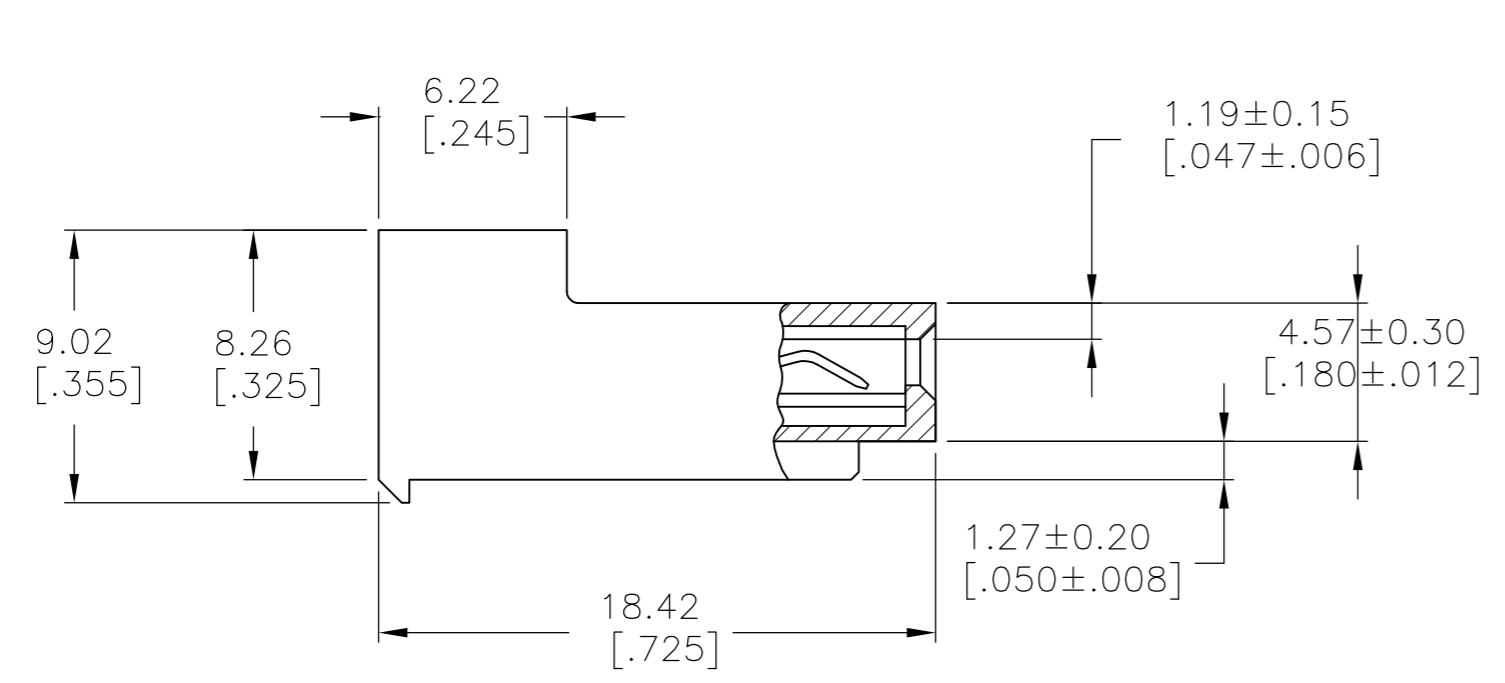
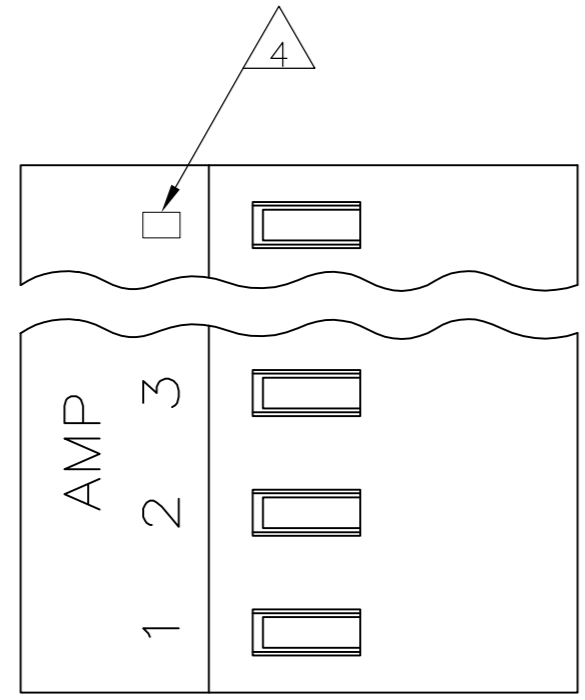
Email & Skype: info@chipsmall.com Web: www.chipsmall.com

Address: A1208, Overseas Decoration Building, #122 Zhenhua RD., Futian, Shenzhen, China



THIS DRAWING IS UNPUBLISHED. RELEASED FOR PUBLICATION
 © COPYRIGHT - By - ALL RIGHTS RESERVED.

LOC		DIST		REVISIONS			
P	LTR	DESCRIPTION		DATE	DWN	APVD	
CM	OO	U		REVISED PER ECO-12-007609	03AUG12	KH SM	



95.10[3.744]	24	5-640432-4
91.13[3.588]	23	5-640432-3
87.17[3.432]	22	5-640432-2
83.21[3.276]	21	5-640432-1
79.25[3.120]	20	5-640432-0
75.29[2.964]	19	4-640432-9
71.32[2.808]	18	4-640432-8
67.36[2.652]	17	4-640432-7
63.40[2.496]	16	4-640432-6
59.44[2.340]	15	4-640432-5
55.47[2.184]	14	4-640432-4
51.51[2.028]	13	4-640432-3
47.55[1.872]	12	4-640432-2
43.59[1.716]	11	4-640432-1
39.62[1.560]	10	4-640432-0
35.66[1.404]	9	3-640432-9
31.70[1.248]	8	3-640432-8
27.74[1.092]	7	3-640432-7
23.77[.936]	6	3-640432-6
19.81[.780]	5	3-640432-5
15.85[.624]	4	3-640432-4
11.89[.468]	3	3-640432-3
7.92[.312]	2	3-640432-2
DIM A NO. OF CIRCUITS PART NO.		

1 MATERIAL: CONNECTOR - NYLON UL94-V2
 CONTACTS - 0.30[.012] THICK COPPER ALLOY
 (BRIGHT TIN-LEAD 0.00203[.000080] MIN. THICK
 FOR CONTACTS 640432-2 THRU 2-640432-4).
 (MATTE WHISKER MITIGATED TIN 0.00203[.000080] MIN.
 THICKNESS OVER NICKEL UNDERPLATE FOR 3-640432-2
 THRU 5-640432-4).

2 CONTACTS ACCEPT 20 AWG WIRE WITH 2.41[.095] MAX
 INSULATION DIAMETER.

3 CONTACTS MUST ACCEPT 1.14±0.03[.045]
 POST AND REMAIN LOCKED IN POSITION.

4 IDENTIFICATION NUMBER FOR LAST CIRCUIT MAY
 NOT APPEAR ON ALL ASSEMBLIES.

5 DIMENSIONS IN BRACKETS ARE IN INCHES.

6 HOUSING FEATURES ARE: CLOSED END WITH LOCKING
 RAMP.

7 OBSOLETE PARTS: OBSOLETE CIS STREAMLINING PER D.RENAUD/D.SINISI

8 YELLOW COLOR STRIPE ON HOUSING (NOT SHOWN) MAY RUN DOWN BETWEEN RIBS.



SUPERCEDED BY 5-640432-4	95.10[3.744]	24	2-640432-4
SUPERCEDED BY 3-640432-3	91.13[3.588]	23	2-640432-3
SUPERCEDED BY 5-640432-2	87.17[3.432]	22	2-640432-2
SUPERCEDED BY 5-640432-1	83.21[3.276]	21	2-640432-1
SUPERCEDED BY 5-640432-0	79.25[3.120]	20	1-640432-0
SUPERCEDED BY 4-640432-9	75.29[2.964]	19	1-640432-9
SUPERCEDED BY 4-640432-8	71.32[2.808]	18	1-640432-8
SUPERCEDED BY 4-640432-7	67.36[2.652]	17	1-640432-7
SUPERCEDED BY 4-640432-6	63.40[2.496]	16	1-640432-6
SUPERCEDED BY 4-640432-5	59.44[2.340]	15	1-640432-5
SUPERCEDED BY 4-640432-4	55.47[2.184]	14	1-640432-4
SUPERCEDED BY 4-640432-3	51.51[2.028]	13	1-640432-3
SUPERCEDED BY 4-640432-2	47.55[1.872]	12	1-640432-2

METRIC

THIS DRAWING IS A CONTROLLED DOCUMENT.		DWN S. CARPENTER 13AUG2003		
DIMENSIONS: mm [INCHES]		CHK D. BOSSI 13AUG2003		
TOLERANCES UNLESS OTHERWISE SPECIFIED:		APVD D. BOSSI 13AUG2003	NAME	
0 PLC ± -		PRODUCT SPEC	MTA 156 CONNECTOR ASSEMBLY, 20 AWG, STANDARD	
1 PLC ± -		APPLICATION SPEC	SIZE	CAGE CODE
2 PLC ± -		114-1020	A2	00779
3 PLC ± 0.13 [.005]		WEIGHT	DRAWING NO	
4 PLC ± -		-	C=640432	
ANGLES ± -		CUSTOMER DRAWING	SCALE	SHEET
FINISH		1	4:1	1 OF 1
MATERIAL		1	REV	U