



Chipsmall Limited consists of a professional team with an average of over 10 year of expertise in the distribution of electronic components. Based in Hongkong, we have already established firm and mutual-benefit business relationships with customers from,Europe,America and south Asia,supplying obsolete and hard-to-find components to meet their specific needs.

With the principle of “Quality Parts,Customers Priority,Honest Operation,and Considerate Service”,our business mainly focus on the distribution of electronic components. Line cards we deal with include Microchip,ALPS,ROHM,Xilinx,Pulse,ON,Everlight and Freescale. Main products comprise IC,Modules,Potentiometer,IC Socket,Relay,Connector.Our parts cover such applications as commercial,industrial, and automotives areas.

We are looking forward to setting up business relationship with you and hope to provide you with the best service and solution. Let us make a better world for our industry!



Contact us

Tel: +86-755-8981 8866 Fax: +86-755-8427 6832

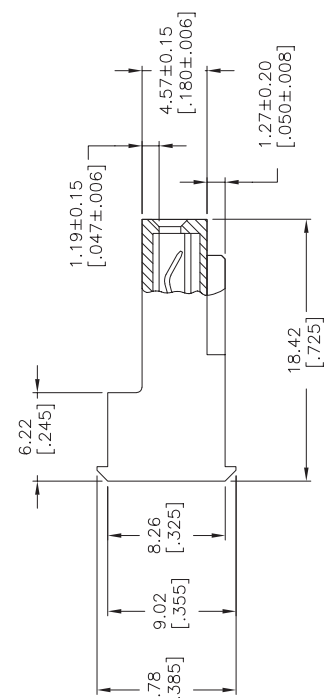
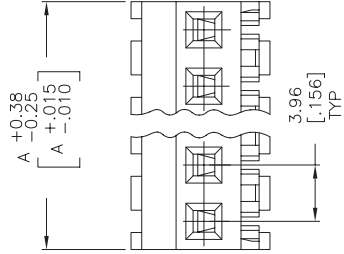
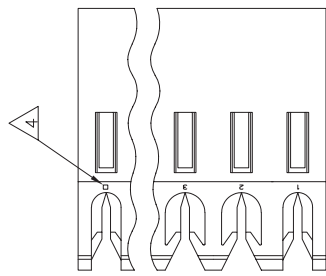
Email & Skype: info@chipsmall.com Web: www.chipsmall.com

Address: A1208, Overseas Decoration Building, #122 Zhenhua RD., Futian, Shenzhen, China



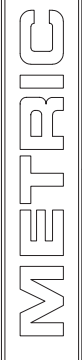
THIS DRAWING IS UNPUBLISHED.		RELEASED FOR PUBLICATION	
© COPYRIGHT		BY TYCO ELECTRONICS CORPORATION. ALL RIGHTS RESERVED.	
LOC	DIST	REVISONS	
CM 00	P LTR	DESCRIPTION	DATE
	J	ECO-07-012876	15/JUN/07
UN	APD	DATE	DATE

D	C	B	A
95.10	[3.744]	24	5-641236-4
91.14	[3.588]	23	5-641236-3
87.17	[3.432]	22	5-641236-2
83.21	[3.276]	21	5-641236-1
79.25	[3.120]	20	5-641236-0
75.29	[2.964]	19	4-641236-9
71.32	[2.808]	18	4-641236-8
67.36	[2.652]	17	4-641236-7
63.40	[2.496]	16	4-641236-6
59.44	[2.340]	15	4-641236-5
55.47	[2.184]	14	4-641236-4
51.51	[2.028]	13	4-641236-3
47.55	[1.872]	12	4-641236-2
43.59	[1.716]	11	4-641236-1
39.62	[1.560]	10	4-641236-0
35.66	[1.404]	9	3-641236-9
31.70	[1.248]	8	3-641236-8
27.74	[1.092]	7	3-641236-7
23.77	[.936]	6	3-641236-6
19.81	[.780]	5	3-641236-5
15.85	[.624]	4	3-641236-4
11.89	[.468]	3	3-641236-3
7.92	[.312]	2	3-641236-2
95.10	[3.744]	24	2-641236-4
91.14	[3.588]	23	2-641236-3
87.17	[3.432]	22	2-641236-2
83.21	[3.276]	21	2-641236-1
79.25	[3.120]	20	2-641236-0
75.29	[2.964]	19	1-641236-9
71.32	[2.808]	18	1-641236-8
67.36	[2.652]	17	1-641236-7
63.40	[2.496]	16	1-641236-6
59.44	[2.340]	15	1-641236-5
55.47	[2.184]	14	1-641236-4
51.51	[2.028]	13	1-641236-3
47.55	[1.872]	12	1-641236-2
43.59	[1.716]	11	1-641236-1
39.62	[1.560]	10	1-641236-0
35.66	[1.404]	9	641236-9
31.70	[1.248]	8	641236-8
27.74	[1.092]	7	641236-7
23.77	[.936]	6	641236-6
19.81	[.780]	5	641236-5
15.85	[.624]	4	641236-4
11.89	[.468]	3	641236-3
7.92	[.312]	2	641236-2
DIM A		NO OF CIRCUITS	PART NO



641236

- 1 MATERIAL: CONNECTOR - NYLON UL94V-2 (BLUE).
CONTACTS - 0.30[.012] THICK COPPER ALLOY
0.00076 [.00030] GOLD IN CONTACT
AREA WITH BRIGHT TIN-LEAD FOR
641236-2 THRU 2-641236-4,
MATTE WHISKER MITIGATED TIN FOR
3-641236-2 THRU 5-641236-4 OVER
NICKEL UNDERPLATE
2. CONTACTS ACCEPT 26 AWG WIRE WITH 2.41[.095] MAX
INSULATION DIAMETER.
3. CONTACTS MUST ACCEPT 1.14±0.03[.045±.001] SQUARE
POST AND REMAIN LOCKED IN POSITION.
- 4 IDENTIFICATION NUMBER FOR LAST CIRCUIT MAY
NOT APPEAR ON ALL ASSEMBLIES.
5. DIMENSIONS IN BRACKETS ARE IN INCHES.
6. HOUSING FEATURES ARE: FEED-THRU WITHOUT
LOCKING RAMP.



THIS DRAWING IS A CONTROLLED DOCUMENT.	
UN B. LEWIS	12 MAR 96
CHK C. SWING	12 MAR 96
APP D. CLARK	12 MAR 96
PRODUCT SPEC	108-1051
APPLICATION SPEC	114-1020
WEIGHT	
CUSTOMER DRAWING	

TYCO ELECTRONICS Tyco Electronics Corporation Harrisburg, Pa 17105-3608	
MTA-156 CONNECTOR ASSEMBLY, 2.6 AWG, STANDARD	
SIZE	SCALE 4:1
DATE CODE	1 OF 1
DRAWING NO	RSJ
AZ 00779	RESTRICTED TO
641236	---