



Chipsmall Limited consists of a professional team with an average of over 10 year of expertise in the distribution of electronic components. Based in Hongkong, we have already established firm and mutual-benefit business relationships with customers from,Europe,America and south Asia,supplying obsolete and hard-to-find components to meet their specific needs.

With the principle of "Quality Parts,Customers Priority,Honest Operation,and Considerate Service",our business mainly focus on the distribution of electronic components. Line cards we deal with include Microchip,ALPS,ROHM,Xilinx,Pulse,ON,Everlight and Freescale. Main products comprise IC,Modules,Potentiometer,IC Socket,Relay,Connector.Our parts cover such applications as commercial,industrial, and automotives areas.

We are looking forward to setting up business relationship with you and hope to provide you with the best service and solution. Let us make a better world for our industry!



Contact us

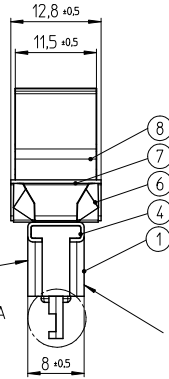
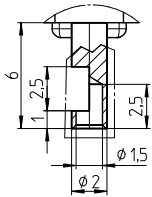
Tel: +86-755-8981 8866 Fax: +86-755-8427 6832

Email & Skype: info@chipsmall.com Web: www.chipsmall.com

Address: A1208, Overseas Decoration Building, #122 Zhenhua RD., Futian, Shenzhen, China



Detail A
Scale 5:1



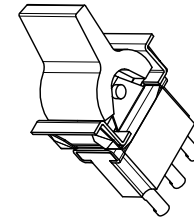
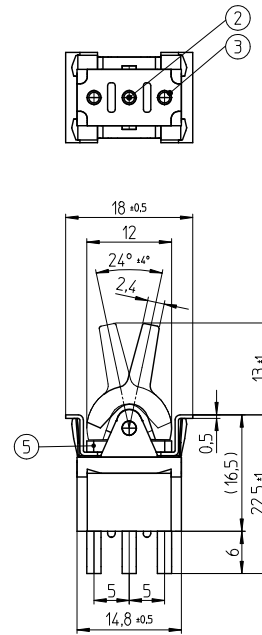
Detail A

Printing of
Logo and Rating

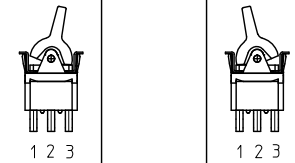
Date Code Printing
last digit of year
A-L = January to December
Day

ALCO
FLD1904
6A AC 250V
ON - ON

Model No.
Rating
Sw. Funct.

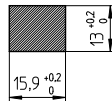


Function Chart



TE PN	Button	Part	Terminals 1 and 2		Terminals 2 and 3
3-6437630-2	black	FLD1904	ON		ON

Panel Cutout
thickness 1 to 2.5mm



Specifications

TE PN	Part	Rating	Initial Contact Resistance	Insulation Resistance	Dielectric Strength	Endurance
3-6437630-2	FLD1904	AC 125V 6A AC 250V 6A	MAX 10 milliohms at DC 2 ~ 4V 1A	MIN 1000 M Ohms at DC 500V	AC 1kV/1min (AC 1.2kV/1sec)	electrically 50,000 cycles at 20 cycles/minute (rated load resistive) mechanically 100,000 cycles at 20 cycles/minute

Materials Chart

1	Case	Polyester Resin	Black
2	Common	C3602BD	Ep-Cu/Ni 3,Au F b
3	Fixed contact	C3602BD+Ag	Ep-Cu/Ni 3,Au F b
4	Frame	SUS	
5	Mounting Sleeve	C3602BD	Ep-Cu/Ni 3 b
6	Leaf spring	SUS	
7	Plate	SUS	
8	Button	Nyron Resin	

PART NO:	PART NAME:	MATERIAL/SURFACE:	OPTIONAL DESCRIPTION
PART LIST			
TOLERANCES UNLESS OTHERWISE SPECIFIED ACCORDING TO ISO 8015 and ISO 2768-F			DIMENSIONS: mm
<small>test dimen. / Prüfmaß: □, auxiliary dimen. / Hilfsmaß: (), theor. dimen. / theor. Maß: □, production control dimen. / Fertigungsmaß: [], dimen. for measure. technology / messtechn. rel. Maß: []</small>			
DEPARTMENT	D&E	DATE	04.01.2007
DRAWER	SA008712	DATE	
CHECKED		DATE	
APPROVED		DATE	
ECR-NO:	DATE	NAME	INFO
SCALE:	NAME:	DWG NO:	NAME
Rocker Switch Single pole			©=1968520
Long Rocker			Customer Drawing
REPLACEMENT FOR:	DWG LOC NO:	IF SHEET: 1 OF 1	REVISION: A A 2

THIS INFORMATION IS CONFIDENTIAL AND PROPRIETARY TO TYCO ELECTRONICS AUSTRIA GMBH AND ITS WORLDWIDE SUBSIDIARIES AND AFFILIATES. IT MAY NOT BE DISCLOSED TO ANYONE OTHER THAN TYCO ELECTRONICS PERSONNEL, WITHOUT WRITTEN AUTHORIZATION FROM TYCO ELECTRONICS AUSTRIA.